

Photo Album for Pierce Job 38183-01
Tucson Fire Department, AZ
Custom Enforcer Pumper

Wk 10 Production ending June 21, 2024

- The pumper continues assembly at the 41 plant.

















6

Pierce

3098

Nitro

Nitro

Nitro



SEATBELT REQUIRED
WHILE DRIVING

Pierce
911
FIRE

WARNING
Do not drink and drive. Drinking alcohol before or after driving can impair your ability to drive safely. Do not drink and drive. Do not drink and operate heavy machinery. Do not drink and operate a vehicle. Do not drink and operate a machine. Do not drink and operate a power tool. Do not drink and operate a piece of equipment. Do not drink and operate a device. Do not drink and operate a system. Do not drink and operate a process. Do not drink and operate a procedure. Do not drink and operate a protocol. Do not drink and operate a plan. Do not drink and operate a policy. Do not drink and operate a program. Do not drink and operate a project. Do not drink and operate a task. Do not drink and operate a job. Do not drink and operate a role. Do not drink and operate a responsibility. Do not drink and operate a function. Do not drink and operate a duty. Do not drink and operate an obligation. Do not drink and operate a commitment. Do not drink and operate a promise. Do not drink and operate a guarantee. Do not drink and operate a warranty. Do not drink and operate a contract. Do not drink and operate an agreement. Do not drink and operate a deal. Do not drink and operate a bargain. Do not drink and operate a transaction. Do not drink and operate an exchange. Do not drink and operate a trade. Do not drink and operate a sale. Do not drink and operate a purchase. Do not drink and operate a transaction. Do not drink and operate an exchange. Do not drink and operate a trade. Do not drink and operate a sale. Do not drink and operate a purchase.

Do not drink and drive. Do not drink and operate heavy machinery. Do not drink and operate a vehicle. Do not drink and operate a machine. Do not drink and operate a power tool. Do not drink and operate a piece of equipment. Do not drink and operate a device. Do not drink and operate a system. Do not drink and operate a process. Do not drink and operate a procedure. Do not drink and operate a protocol. Do not drink and operate a plan. Do not drink and operate a policy. Do not drink and operate a program. Do not drink and operate a project. Do not drink and operate a task. Do not drink and operate a job. Do not drink and operate a role. Do not drink and operate a responsibility. Do not drink and operate a function. Do not drink and operate a duty. Do not drink and operate an obligation. Do not drink and operate a commitment. Do not drink and operate a promise. Do not drink and operate a guarantee. Do not drink and operate a warranty. Do not drink and operate a contract. Do not drink and operate an agreement. Do not drink and operate a deal. Do not drink and operate a bargain. Do not drink and operate a transaction. Do not drink and operate an exchange. Do not drink and operate a trade. Do not drink and operate a sale. Do not drink and operate a purchase.







Important safety information for the mobile radio operator



Instrument cluster featuring the following gauges:

- Water Temperature:** Scale 170 F to 230 F. Needle at approximately 180 F.
- DEF (Defrost):** Scale 1/2 to 3/4. Needle at approximately 1/4.
- Oil Pressure (PSI):** Scale 0 to 100. Needle at approximately 20 PSI.
- Trans (Transmission):** Scale 100 to 300. Needle at approximately 150.
- RPM (Revolutions Per Minute):** Scale 0 to 25 (x100). Needle at approximately 10.
- MPH (Miles Per Hour):** Scale 0 to 85. Needle at approximately 15.
- Volts:** Scale 10 to 16. Needle at approximately 14.
- Fuel:** Scale E to F. Needle at approximately 1/4.
- Front Air (PSI):** Scale 0 to 150. Needle at approximately 120.
- Rear Air (PSI):** Scale 0 to 150. Needle at approximately 120.

Additional text on the cluster: "ULTRA LOW SULFUR DIESEL FUEL ONLY" located below the fuel gauge.

★★★★ MADE WITH PRIDE IN ★★★★★★
AMERICA
 ★★★★★★ BY PEOPLE WHO CARE ★★★★★★

START
 (Red button)

IGNITION
 (Red button)

E-M
 PANEL
 OFF
 PANEL

ON
 HI IDLE
 OK-HI IDLE

Always use proper tie-down technique. Always use proper tie-down technique. Always use proper tie-down technique.



POWER ○ ○ ○ CH- MENU SEL

SIREN BRAKE

DEFROST DISABLE

LOAD MANAGER

ENG BRK ON/OFF

ENG BRK HI/MED/LO

SIREN HORN

PERIMETER LIGHTS

MIRROR HEAT

PULL TO RELEASE
PARK
SYSTEM
PARK
RELEASE

ARROW TRANSMISSION

HORN

30-40-50

R

MODE

N

D

Pierce

AUTO

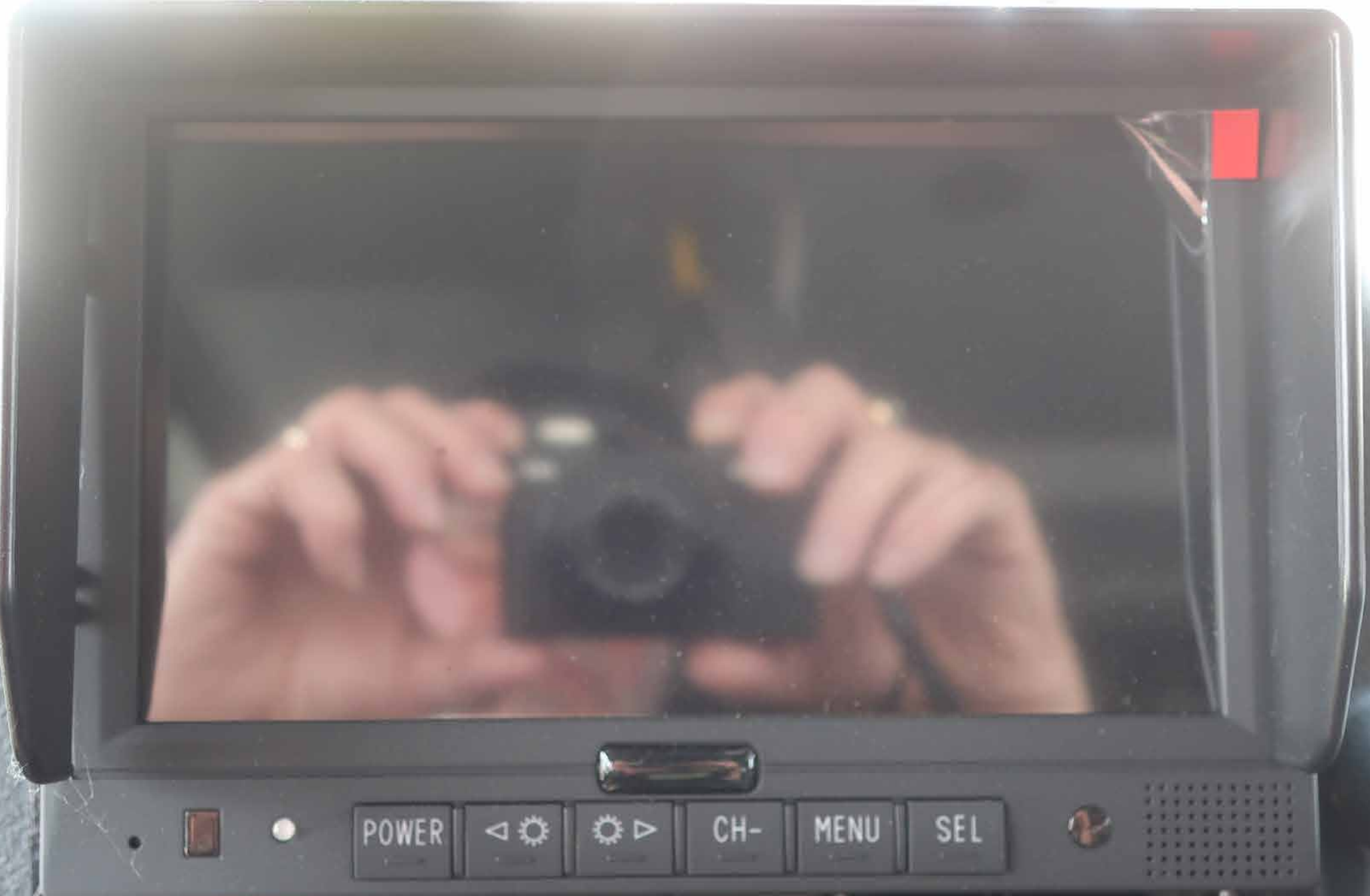
88

SNOW

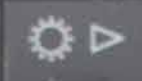
WINDSHIELD

ROAD TO PUMP
L. STOP TRUCK
2. BUMP TRUCK
3. ENGAGE PUMP
4. SET PARKING BRAKE





POWER



CH-

MENU

SEL

POWER



CH-

MENU

SEL



**SIREN
BRAKE**

**DEFROST
DISABLE**

**LOAD
MANAGER**

ENG BRK
ON/OFF

ENG BRK
HI/MED/LO

SIREN
HORN

PERIMETER
LIGHTS

MIRROR
HEAT



Allison
Transmission

DISENGAGE RETARD
WHEN VEHICLE IS ON
OR SLIPPERY SURFA



Pierce

AUTO

88



EMERGENCY MASTER ROOF LIGHT FRONT WARNING SIDE WARNING LOWER REAR WARNING UPPER REAR WARNING

HIGH BEAM FLASH OPTICON FRONT FLOOD DRIVERS SCENE PASS SCENE REAR SCENE

Hydram

00
00



**EMERGENCY
MASTER**

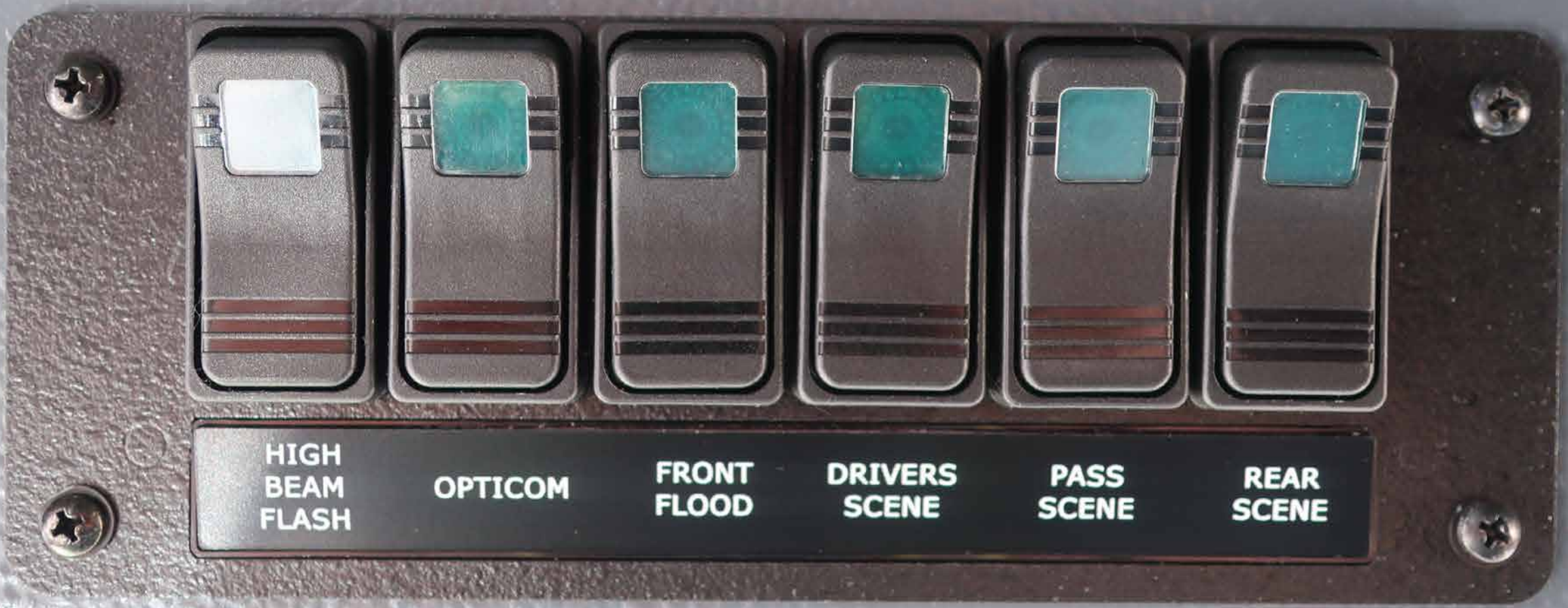
**ROOF
LIGHT**

**FRONT
WARNING**

**SIDE
WARNING**

**LOWER
REAR
WARNING**

**UPPER
REAR
WARNING**



**HIGH
BEAM
FLASH** **OPTICOM** **FRONT
FLOOD** **DRIVERS
SCENE** **PASS
SCENE** **REAR
SCENE**



GOLDFINGER



VOLUME



 **FEDERAL SIGNAL**

















No. 1



PUMP control panel with various buttons, a digital display, and a large black knob.

A vertical panel of control buttons and indicators, including labels for 'DEF FILL PUMP', 'WATER FILL', 'REEL REWIND', and 'AIR FLOW'.

NO. 1 CROSSLAY NO. 2 CROSSLAY NO. 3 CROSSLAY



INTAKE RELIEF VALVE control panel with a gauge and a yellow handle.

NO. 1 CROSSLAY NO. 2 CROSSLAY NO. 3 CROSSLAY

REEL DISCHARGE control panel with a gauge and a handle.

DELUGE DISCHARGE control panel with a gauge and a handle.

FRONT DISCHARGE control panel with a gauge and a handle.

PASSENGER REAR DISCHARGE control panel with a gauge and a handle.

TANK FILL & RE-CIRCULATING LINE control panel with a handle.

WATER control panel with a blue handle and a gauge.



WATERMUS control panel with a digital display and buttons.

NO. 1 DRIVER SIDE DISCHARGE control panel with a gauge and a handle.

NO. 3 PASSENGER SIDE DISCHARGE control panel with a gauge and a handle.

NO. 2 DRIVER SIDE DISCHARGE control panel with a gauge and a handle.

NO. 4 PASSENGER SIDE DISCHARGE control panel with a gauge and a handle.

CARGO TIA REAR SIDE DISCHARGE control panel with a gauge and a handle.

A large circular gauge with a green border and a blue face, possibly a flow or pressure gauge.

PRIMER FIRE PUMP control panel with a handle and a gauge.

NO. 1 DRIVER SIDE DISCHARGE

NO. 3 PASSENGER SIDE DISCHARGE

NO. 2 DRIVER SIDE DISCHARGE

NO. 4 PASSENGER SIDE DISCHARGE

TANK TO PUMP

NO. 1 TANK REAR DISCHARGE NO. 2 TANK REAR DISCHARGE

Panel



PUMPBOSS
CHECK ENGINE STOP ENGINE
RPM
MENU SILENCE
PRESSURE THROTTLE READY
RPM PRESET
IDLE
Cummings





TANK FILL & RE-CIRCULATING LINE

DISCHARGE

DELUGE DISCHARGE

FRONT DISCHARGE

PASSENGER REAR DISCHARGE



PRIMER FIRE PUMP
TRIDENT AIR PRIME PUSH TO PRIME

PRIMING INSTRUCTIONS
FOR ENHANCED PRIMING
DISCHARGE, RUN ENGINE AT 1500
RPM WITH 2 PRIMER

DRIVER DISCHARGE

NO. 4 PASSENGER SIDE DISCHARGE

TANK TO PUMP

NO. 2 DRIVER SIDE DISCHARGE

NO 1 CROSSLAY

NO. 2 CROSSLAY

NO 3 CROSSLAY

INTAKE RELIEF VALVE

- PULL KNOB OUT TO ADJUST
- TURN TO CHANGE SET PRESSURE
- PUSH KNOB IN TO LOCK

PULL TO UNLOCK

TRIBERT



NO. 1 CROSSLAY

NO. 2 CROSSLAY

NO. 3 CROSSLAY

REEL DISCHARGE

DE

PASSENGER MAIN INLET

OPEN CLOS

WATERGUS



NO. 1 DRIVER SIDE DISCHARGE

NO. 3 PASSENGER SIDE DISCHARGE

NO. 2 DRIVER SIDE DISCHARGE

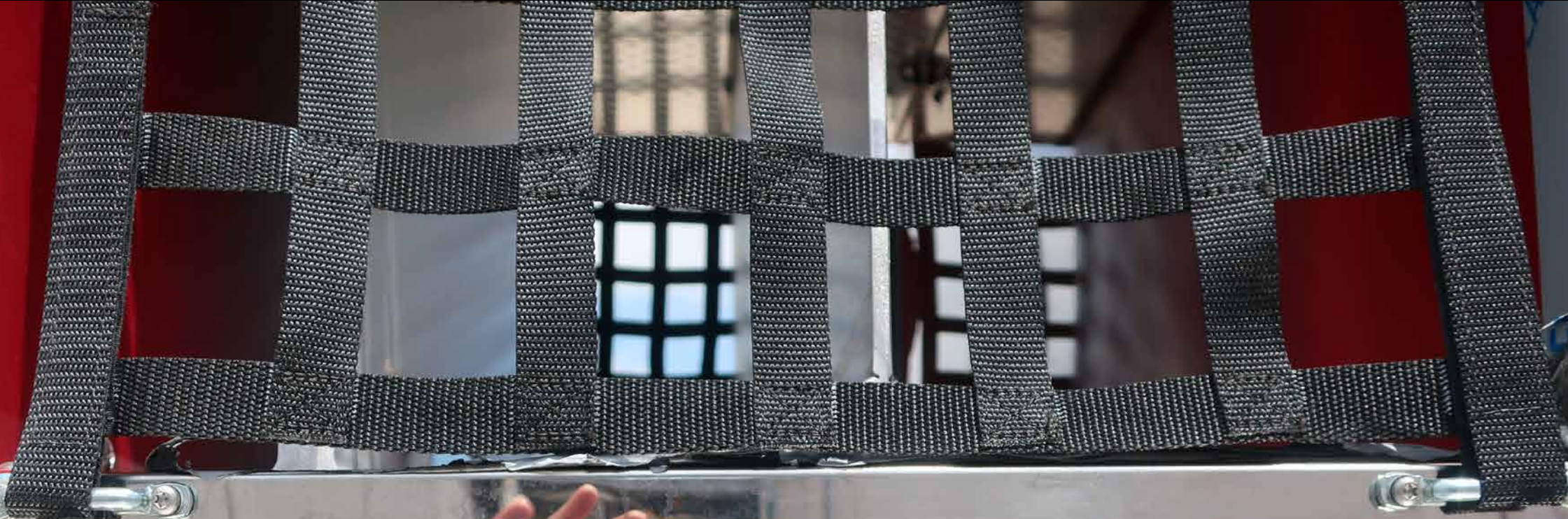
NO SID

[Switch]

NO 1 DRIVER SIDE DISCHARGE

NO 2 DRIVER SIDE DISCHARGE

NO
Beyond



NO. 1 CROSSLAY

NO. 2 CROSSLAY

NO. 3 CROSSLAY



PRIME



Panel R10



WATEROUS

PUMP MODEL: 628	SERIAL NO: 180227
TRUCK MODEL: 6220	SERIAL NO: 180227
DATE: MAR-2008	REVID: 2
CAPACITY: 1300 GPM	AT 150 DISCH. PSI
HYDRO: 800 PSI	MAX DISCH: 400 PSI

IRREGULAR OPERATION MAINTENANCE SCHEDULE

Check and adjust pressure relief valve
Check and adjust pressure relief valve
Check and adjust pressure relief valve
Check and adjust pressure relief valve
Check and adjust pressure relief valve
Check and adjust pressure relief valve
Check and adjust pressure relief valve
Check and adjust pressure relief valve
Check and adjust pressure relief valve
Check and adjust pressure relief valve



CAUTION

ALERT LIGHT



DRIVER
CHARGE

FOR ENHANCED PREMIX
PERFORMANCE, 18.8L ENGINE AT 1000
RPM WHILE PUMPING



Panel
R/P/O



2100
2000
1900

PUMP
DRAIN



AIR SUPPLY



AIR OUTLET

AIR INLET



WATEROUS

PUMP MODEL: CSU SERIAL NO: 182227
TRANS MODEL: C22D SERIAL NO: 182227
DATE: MAR-2024 RATIO: 2.03
CAPACITY: 1250 GPM AT 150 DISCH PSIG
HYDRO: 600 PSIG MAX DISCH: 400 PSIG

52906

MINIMUM OPERATION MAINTENANCE SCHEDULE*

CHECK OPERATION WEEKLY:
Relief valve or pressure controller
Transfer valve
Priming system
Packing gland Leakage
Normal: 10-120 drops per minute
Mechanical Seals Leakage - 0

EVERY 6 MONTHS OR 100 OPERATING HOURS:

Gear Case - change lubricant
(Use SAE 90 gear lube)
Chain Case - change lubricant
(Use automatic transmission fluid, ATF)
Grease outboard bearing -
Use BRB grease (Ball and roller bearing)

*Consult Pump Manual
for complete information



2322918

PUMP
DRAIN
PULL TO DRAIN

DO NOT OPEN OR CLOSE
UNDER PRESSURE

CAUTION

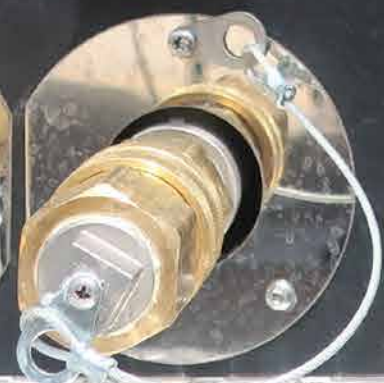
PLACE CAB SHIFT IN NEUTRAL
PUSH FOR ROAD
PULL FOR PUMP

MANUAL
PUMP SHIFT



AIR OUTLET

AIR INLET





PULL TO OPEN

**DRIVER SIDE
AUX. INLET**













6
FT

10
FT





PASSENGER REAR
DISCHARGE







38153-1

38153-1



NO. 3 CROSSLAY

NO. 2 CROSSLAY

NO. 1 CROSSLAY

OFF ON

GER
MPNT BACK

CAUTION

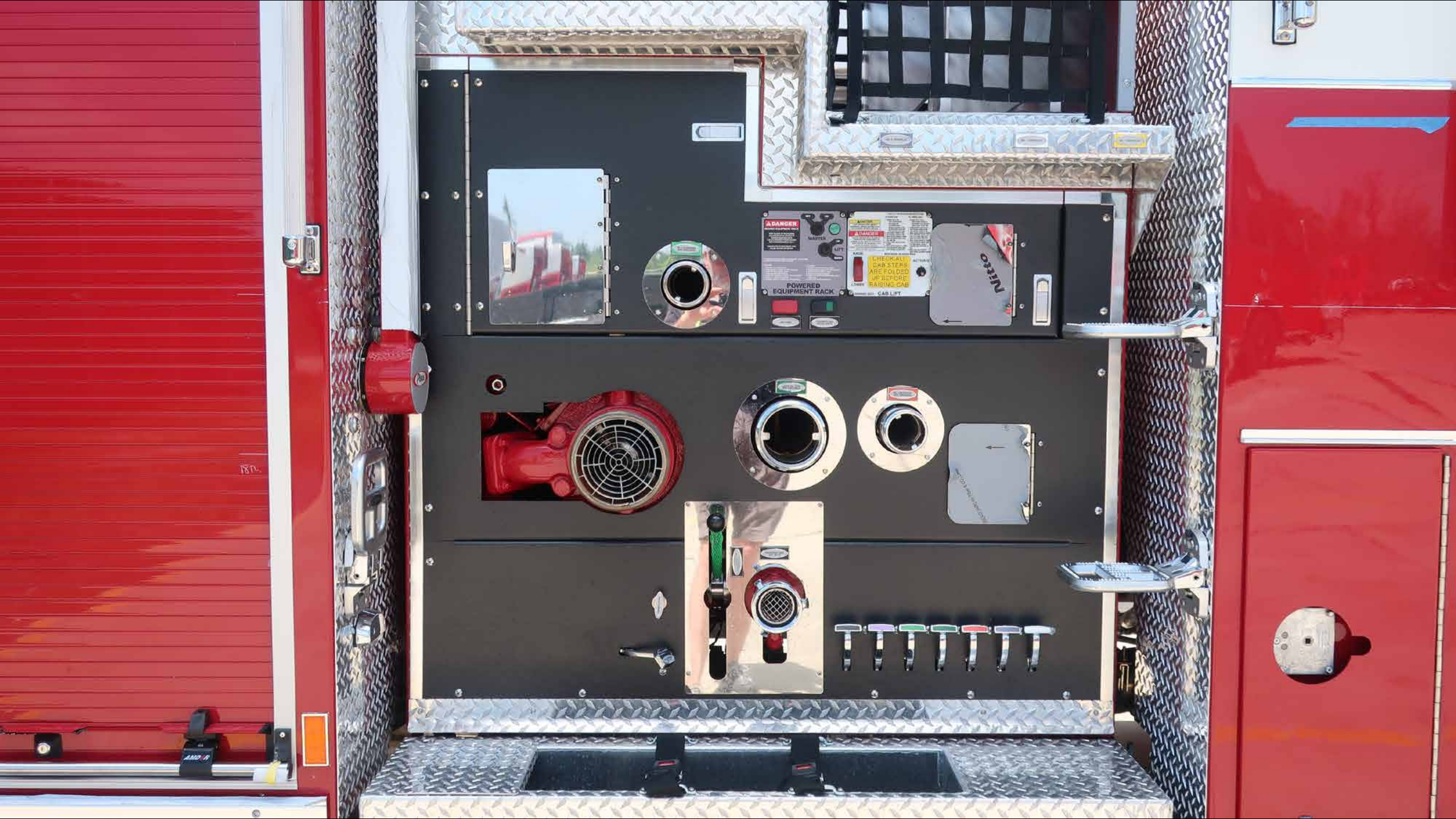
CHECK OVERHEAD AREA, BUMPERS,
COMPONENTS, MIRRORS, AND REAR VIEW

CAB LIFT OPERATING INSTRUCTIONS
TO RAISE CAB:

1. Prepare cab to lift.
Park on level surface.
Tare weight (W).

TO LOWER CAB:

1. Prepare cab to lower.
Check that no persons or
obstructions are in lift path.
Feed up straps on rear wall.





⚠ DANGER
MOVING EQUIPMENT RACK

STAY CLEAR OF RACK AREA UNLESS RACK IS LOCKED IN RAISED POSITION OR IN FULLY-LOWERED POSITION AND WITH MASTER SWITCH OFF.

SUDDEN RACK MOVEMENT MAY CAUSE INJURY OR DEATH.

IF EQUIPPED WITH A MANUAL OVERRIDE, MAKE SURE OVERRIDE IS IN NEUTRAL POSITION.

TO RAISE:

1. SECURE ALL EQUIPMENT
2. OPEN SAFETY LOCKS (IF APPLICABLE)
3. CLEAR OPERATIONAL AREA
4. TURN ON MASTER SWITCH
5. PUSH LIFT SWITCH UP UNTIL FULLY RAISED
6. TURN OFF MASTER SWITCH
7. ENGAGE SAFETY LOCKS (IF APPLICABLE)

TO LOWER:

1. CLOSE COMPARTMENT DOORS
2. OPEN SAFETY LOCKS (IF APPLICABLE)
3. CLEAR OPERATIONAL AREA
4. TURN ON MASTER SWITCH
5. PUSH LIFT SWITCH DOWN UNTIL FULLY LOWERED
6. TURN OFF MASTER SWITCH

POWERED EQUIPMENT RACK

1324181

OFF ON

MASTER

UP DOWN

LIFT



⚠ CAUTION

CHECK OVERHEAD AREA, BUMPER COMPONENTS, MIRRORS, AND SIGHT RODS FOR CLEARANCE BEFORE TILTING CAB.

⚠ DANGER

CAB STAY ARM MUST BE IN THE SUPPORT POSITION BEFORE MOVING UNDER OR WORKING ON THE CAB IN THE TILT POSITION. NEVER WORK ON THE CAB WITHOUT STAY ARM IN THE SUPPORT POSITION. FAILURE TO FOLLOW PROPER PROCEDURES CAN RESULT IN INJURY OR DEATH.

CAB LIFT OPERATING INSTRUCTIONS

TO RAISE CAB:

1. Prepare cab to tilt:
 - Park on level surface.
 - Turn engine OFF.
 - Set parking brake.
 - Secure loose items in cab.
 - No obstructions in tilt path.
 - Fold up steps on rear wall.
2. Turn battery switch to ON.
3. Turn ignition switch to ON.
4. Move control switch to RAISE.
5. Press ACTIVATE switch until cab fully lifts.
6. Swing safety Stay-Arm into pocket.
7. Move control switch to LOWER.
8. Press ACTIVATE switch until cab is resting on Stay-Arm.

TO LOWER CAB:

1. Prepare cab to lower:
 - Check that no persons or obstructions are in tilt path.
 - Fold up steps on rear wall.
2. Parking brake must be set.
3. Turn battery switch to ON.
4. Turn ignition switch to ON.
5. Move control switch to RAISE.
6. Press ACTIVATE switch until cab is off safety Stay-Arm.
7. Stow and secure Stay-Arm.
8. Move control switch to LOWER.
9. Press ACTIVATE switch until cab fully lowers and for 5 seconds after cab comes to rest.
10. Make sure cab is latched down before operating vehicle.

Manual Override: See Operation Manual

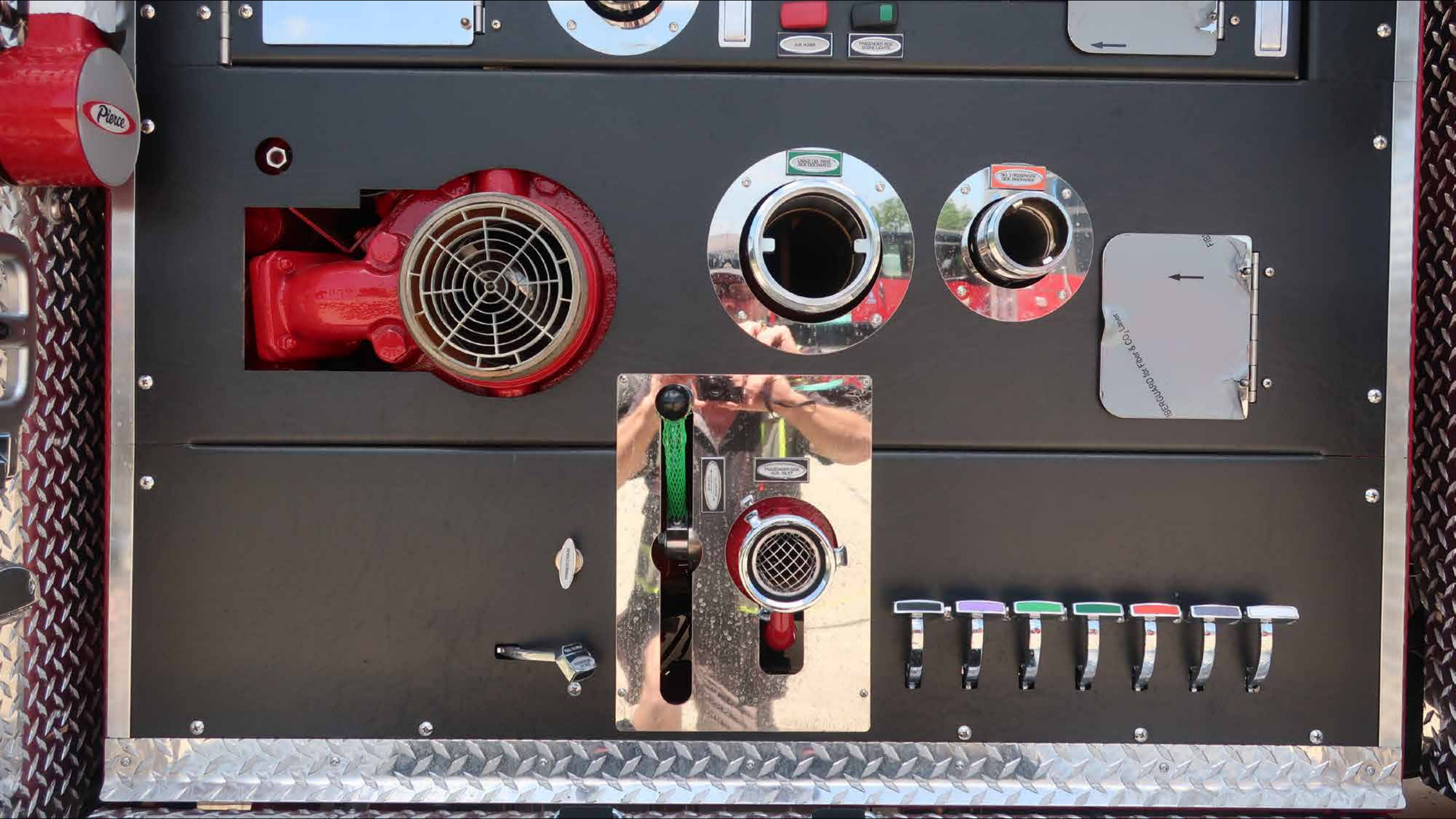
RAISE

LOWER

ACTIVATE

CHECK ALL CAB STEPS ARE FOLDED UP BEFORE RAISING CAB

2644992-0001 CAB LIFT



Pierce

LUFTHORN

VORLADUNG DRUCKSCHUTZ

VORLADUNG DRUCKSCHUTZ

WASSERDRUCK

BEREITUNG FÜR GEBÄUDE
100-100-100-100-100-100

VORLADUNG DRUCKSCHUTZ

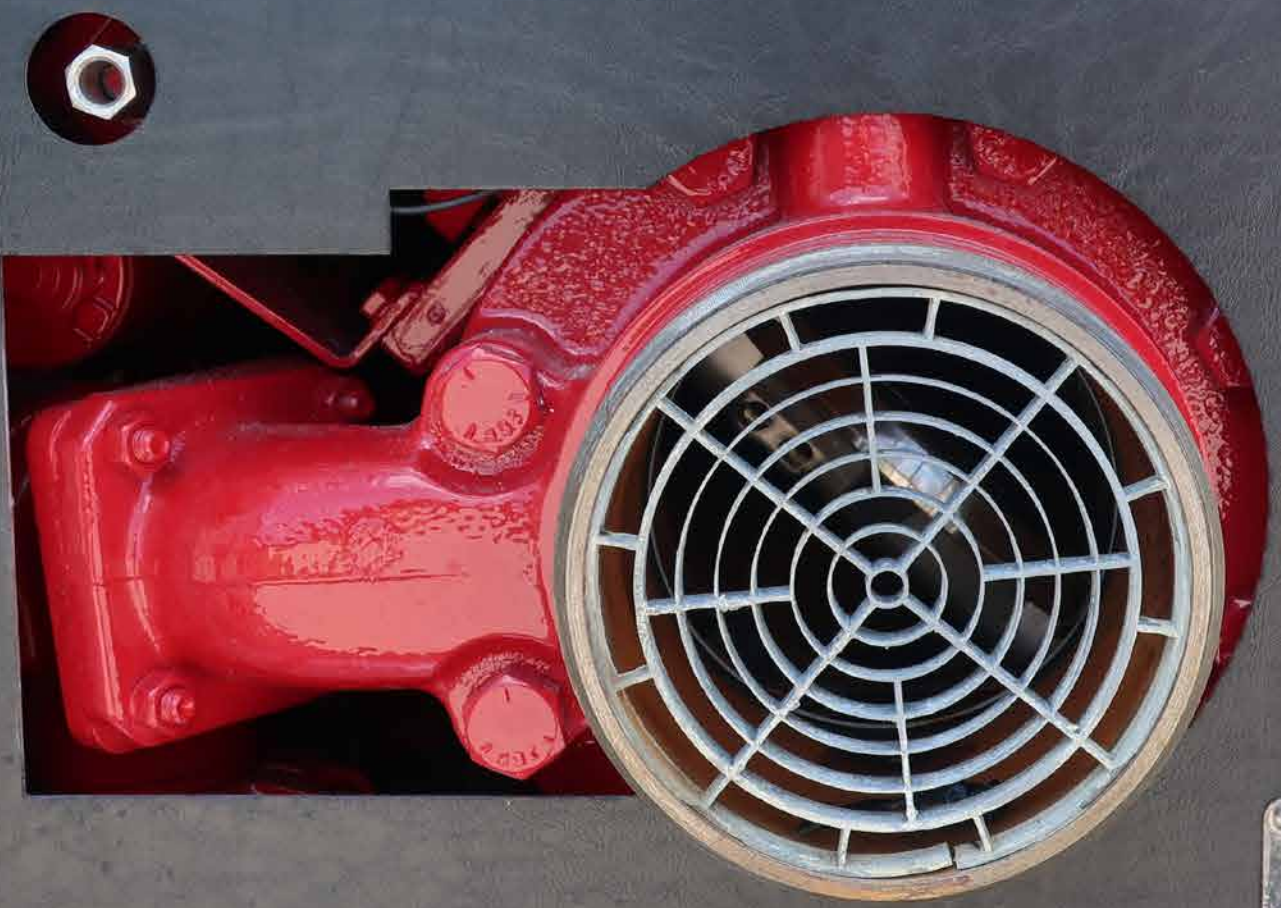


LARGE DIA. PASS.
SIDE DISCHARGE



NO. 3 PASSENGER
SIDE DISCHARGE

163



PULL TO OPEN
PASSENGER MAIN INLET

PULL TO OPEN
PASSENGER REAR
DISCHARGE

PULL TO OPEN
NO. 4 PASSENGER
SIDE DISCHARGE

PULL TO OPEN
LARGE DIA. PASS.
SIDE DISCHARGE

PULL TO OPEN
NO. 3 PASSENGER
SIDE DISCHARGE

PULL TO OPEN
NO. 2 CROSSLAY

PULL TO OPEN
NO. 3 CROSSLAY



PRIMER DRAIN



PULL

A close-up photograph of a vehicle's interior control panel. The panel is dark-colored with a textured surface. A prominent feature is a silver, diamond-plate metal trim piece that runs diagonally across the frame. In the center, there is a rectangular, chrome-plated control knob. The knob has two sections: the top section is black with the text "PULL TO OPEN" in white, and the bottom section is silver with the text "PASSENGER SIDE AUX. INLET" in black. To the right of the knob, there are two small, circular silver buttons. The background shows a dark, textured surface, likely the vehicle's dashboard or door panel, and a portion of a silver metal trim piece on the right side.

PULL TO OPEN

**PASSENGER SIDE
AUX. INLET**













BAMBER
DOMINION

SRS

Pierce



WARNING
Do not use this seat as a chair. The seat is designed for use only as a seat. Do not use this seat for any other purpose. Do not use this seat for any other purpose. Do not use this seat for any other purpose.





GAMBER JOHNSON

Important safety information for the mobile radio operator

POWER WINDOW



MBER
NSON

SPIN BRAKE

MECHANICAL

ELECTRICAL



SIREN BRAKE





AIR HORN



MECHANICAL
SIREN





B-D-H-GIT

Aux

- Aux Select
- Receive



Rx

Tx



Radio

- Monitoring
- Radio Select
- Receive
- Transmit



VOLUME



SQUELCH



FIRE COM







HUGHES FIRE EQUIPMENT