

# Photo Album for Pierce Job 38183-01 Tucson Fire Department, AZ Custom Enforcer Pumper

## Wk 3 Production ending May 3, 2024

- The cab has completed the paint process and has begun assembly at the Neenah plant.
- The chassis has begun assembly at the Neenah plant.
- The pump has begun assembly at the IPP plant.
- The body continues weld operations at the IPP plant.



GORBEL

301831

PROPER WORKING  
ORDER

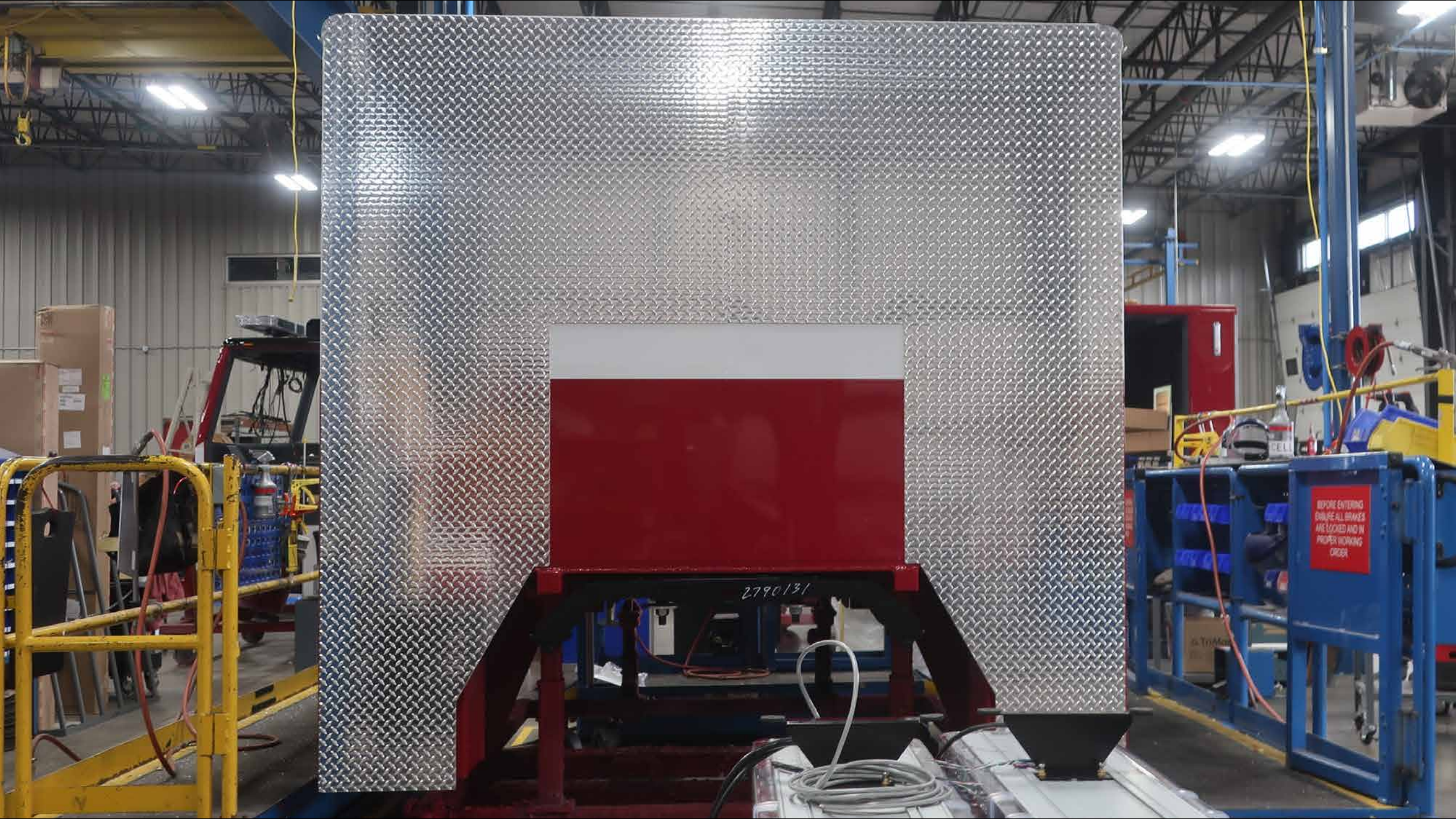


ENTERING  
BRAKES  
AND IN  
WORKING

PROFLIX  
KNEELING PAD

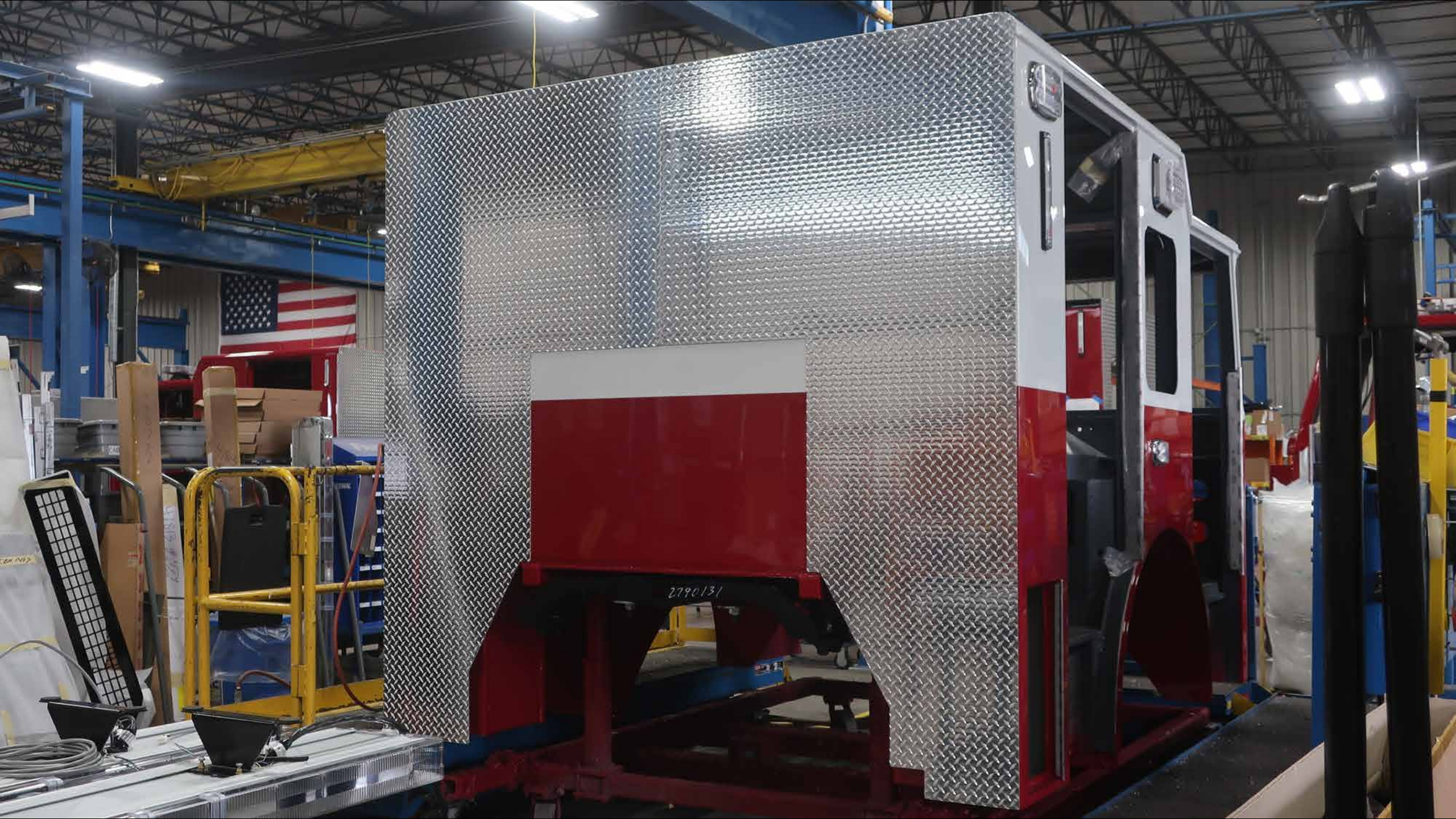
2270151

216



2790131

BEFORE ENTERING  
ENSURE ALL BRAKES  
ARE LOCKED AND IN  
PROPER WORKING  
ORDER.



2790131



2790131

SOUTHWORTH















BEFORE ENTERING  
ENSURE ALL BRAKES  
ARE LOCKED AND IN  
PROPER WORKING  
ORDER



TAKES  
AND IN  
KING

WHITE



Handwritten tag text:  
1000-31113-1  
1000-31113-1  
PART

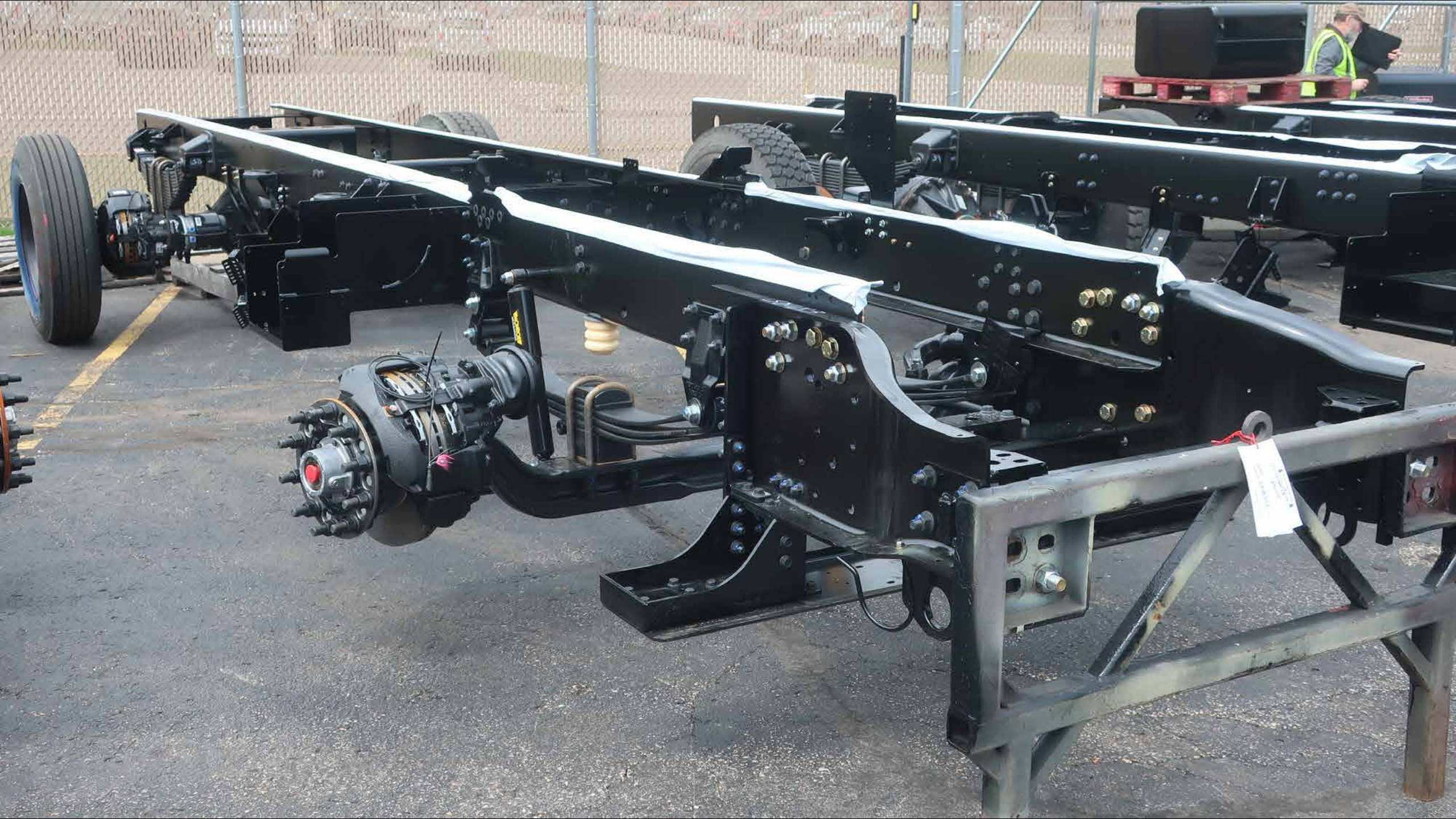


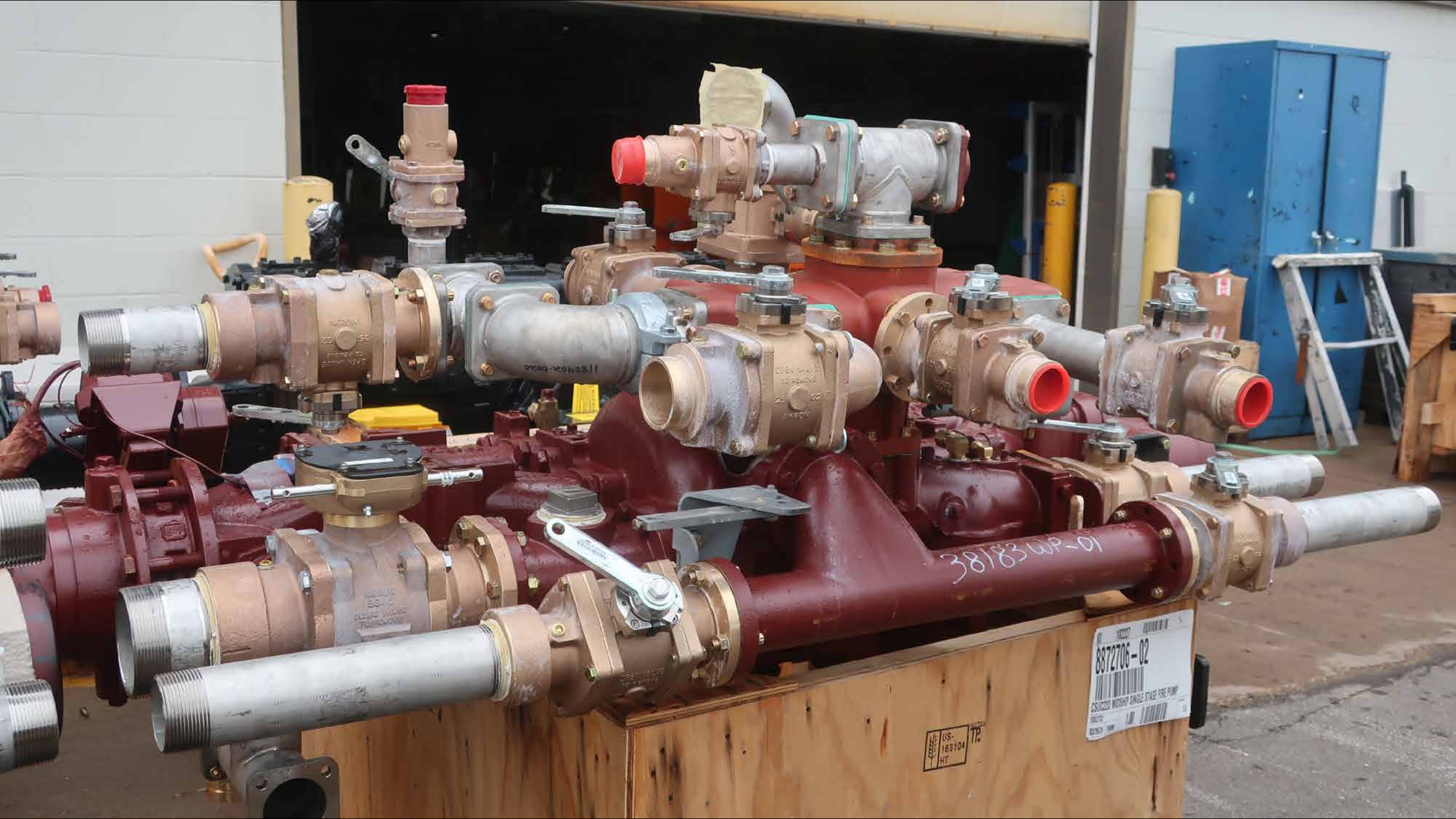












38183 WP-01

8872706-02  
CS10020 MIDSHIP SINGLE STAGE FIRE PUMP

US-163104  
HT



DO NOT STACK

887217

DO NOT STACK

10004 2  
12000225

10004 2  
12000225

10004 2  
12000225

10004 2  
12000225



13

MINI STACK

183104  
HT

PLEASE  
NO



SPEED DOOR  
PLEASE KEEP CLEAR OF THIS DOOR

US-163104  
NY

STACK

ING  
ANY  
DIR



DO NOT

8872706-02  
LITTON FIRE PUMP  
SINGLE STAGE FIRE PUMP

LIFT







38183-01  
[Illegible text]

38183-01  
[Illegible text]

SHORTAGE

38183-01  
• Body, like all through light  
Quantity  
Item  
Item  
Item  
Item  
Item  
Item

38183-434

DELIVER TO IT!  
PAINT FOR  
MULTI-SPEC  
The deliver to 453  
Building at 10-11-11  
JOB # 38183-01  
1 1

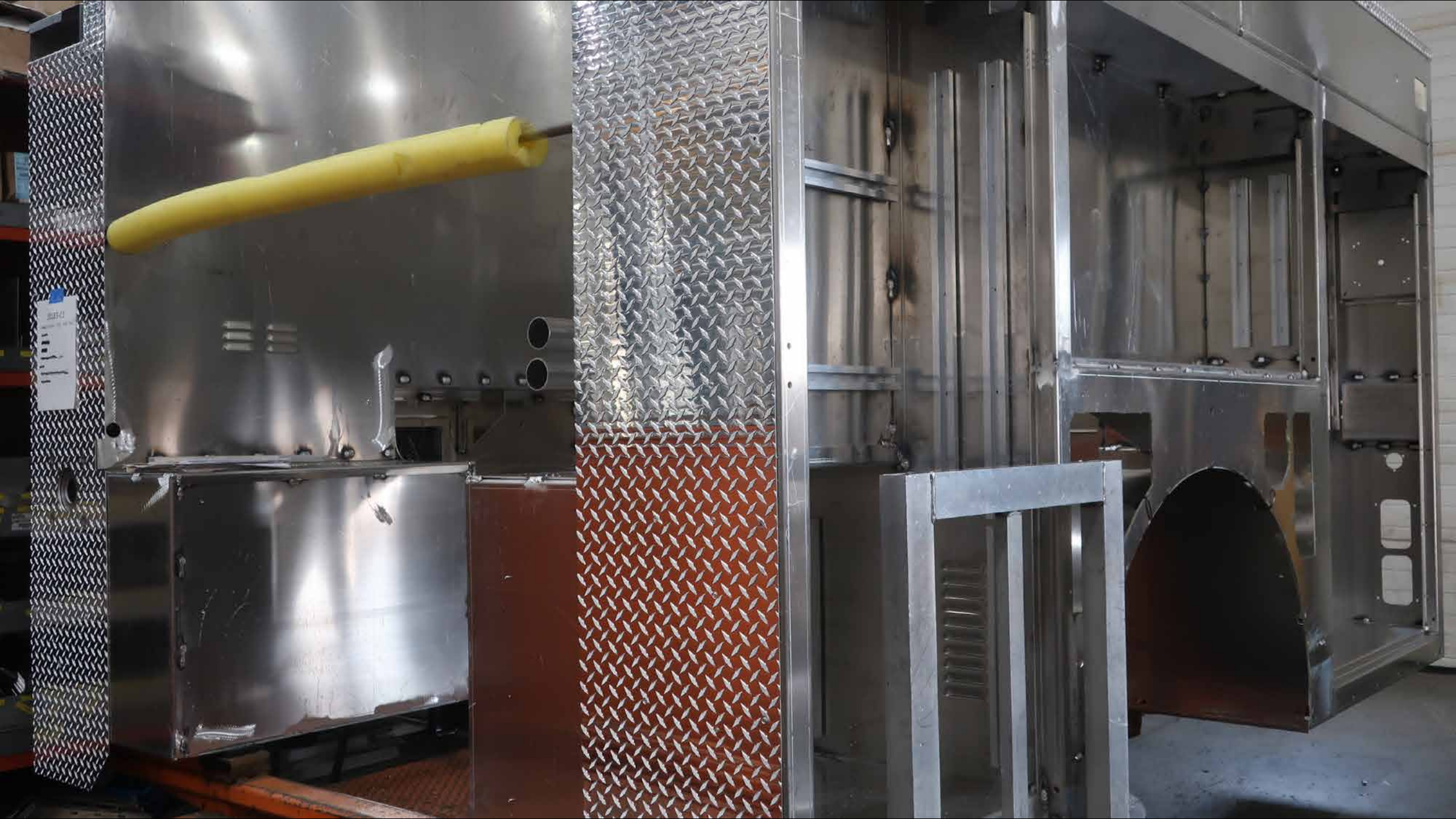


PO-truck-10  
AI-track  
-Label-unit  
-Control-unit



~~Track~~  
~~24-ly-24-ly-24-ly-24-ly~~  
None

374  
40





**HUGHES FIRE EQUIPMENT**