

Photo Album for Pierce Job 38183-01 Tucson Fire Department, AZ Custom Enforcer Pumper

Wk 5 Production ending May 17, 2024

- The cab and pump have been mounted to the chassis and the pumper continues assembly at the Neenah plant.
- The body has completed the paint process and is staged to begin assembly at the 41 plant.







38133





NOTICE
FIRE DEPARTMENT
38183-1

38183-1

38183-1

38183-1



NOTICE
PLEASE CONTACT THE
MANUFACTURER FOR
REPAIRS

38183-1

38183-1

38183-1

38183-1







Altec



ULTRA LOW SULFUR
DIESEL FUEL ONLY

START
IGNITION

E-M
OFF
PANEL
PANEL

HI IDLE
CR-HI IDLE

FORWARD PUMP
PUMP SHIFT



PULL TO APPLY
SYSTEM PARK
HALDEX
PUSH TO RELEASE

SIREN
BRAKE

DEFROST
DISABLE

LOAD
MANAGER

ENG BRK

ENG BRK
HI/MED/LO

SIREN
HORN

PERIMETER
LIGHTS

MIRROR
HEAT

SAISON
HYDRA-CLIMATE

MODE

R

N

D

AUTO

88

Pierce

11402
1380



POWER



CH-

MENU

SEL



SIREN
BRAKE



DEFROST
DISABLE



LOAD
MANAGER

ENG BRK
ON/OFF

ENG BRK
HI/MED/LO

SIREN
HORN

PERIMETER
LIGHTS

MIRROR
HEAT



Allison

OR SLIPPER



Pierce

AUTO

88





Pierce

AUTO

8.8



DEFROST
DISABLE

LOAD
MANAGER



MDT



EMERGENCY MASTER ROOF LIGHT FRONT WARNING SIDE WARNING LOWER REAR WARNING UPPER REAR WARNING

HIGH BEAM FLASH OFFICER FRONT FLOOD SMOKE MIST PMS ALTM REAR FOG

00
00



**EMERGENCY
MASTER** **ROOF
LIGHT** **FRONT
WARNING** **SIDE
WARNING** **LOWER
REAR
WARNING** **UPPER
REAR
WARNING**



HIGH
BEAM
FLASH

OPTICOM

FRONT
FLOOD

DRIVERS
SCENE

PASS
SCENE

REAR
SCENE



AIR
HORN

CYCLE

OFF
MANUAL
WAIL
TONE 1
TONE 2

VOLUME

BRAKE

RADIO

 FEDERAL SIGNAL

POWER
MAN 2 HF T1
MAN 1 T2
RAD MAN MIC VOL
1 2 RAD HORN

WHELEN

HIGH LEFT
OFF RIGHT
LOW SPLIT
FLASH

POWER FUNCTION DIRECTION INDIC

WHELEN
TRAFFIC ADV





1. The vehicle must be...

2. The vehicle must be...

3. The vehicle must be...

4. The vehicle must be...

5. The vehicle must be...

6. The vehicle must be...

7. The vehicle must be...

8. The vehicle must be...

9. The vehicle must be...

10. The vehicle must be...

11. The vehicle must be...

12. The vehicle must be...

13. The vehicle must be...

14. The vehicle must be...

15. The vehicle must be...

16. The vehicle must be...

17. The vehicle must be...

18. The vehicle must be...

19. The vehicle must be...

20. The vehicle must be...

21. The vehicle must be...

22. The vehicle must be...

23. The vehicle must be...

24. The vehicle must be...

25. The vehicle must be...

26. The vehicle must be...

27. The vehicle must be...

28. The vehicle must be...

29. The vehicle must be...

30. The vehicle must be...

31. The vehicle must be...

32. The vehicle must be...

33. The vehicle must be...

34. The vehicle must be...

35. The vehicle must be...

36. The vehicle must be...

37. The vehicle must be...

38. The vehicle must be...

39. The vehicle must be...

40. The vehicle must be...

41. The vehicle must be...

42. The vehicle must be...

43. The vehicle must be...

44. The vehicle must be...

45. The vehicle must be...

46. The vehicle must be...

47. The vehicle must be...

48. The vehicle must be...

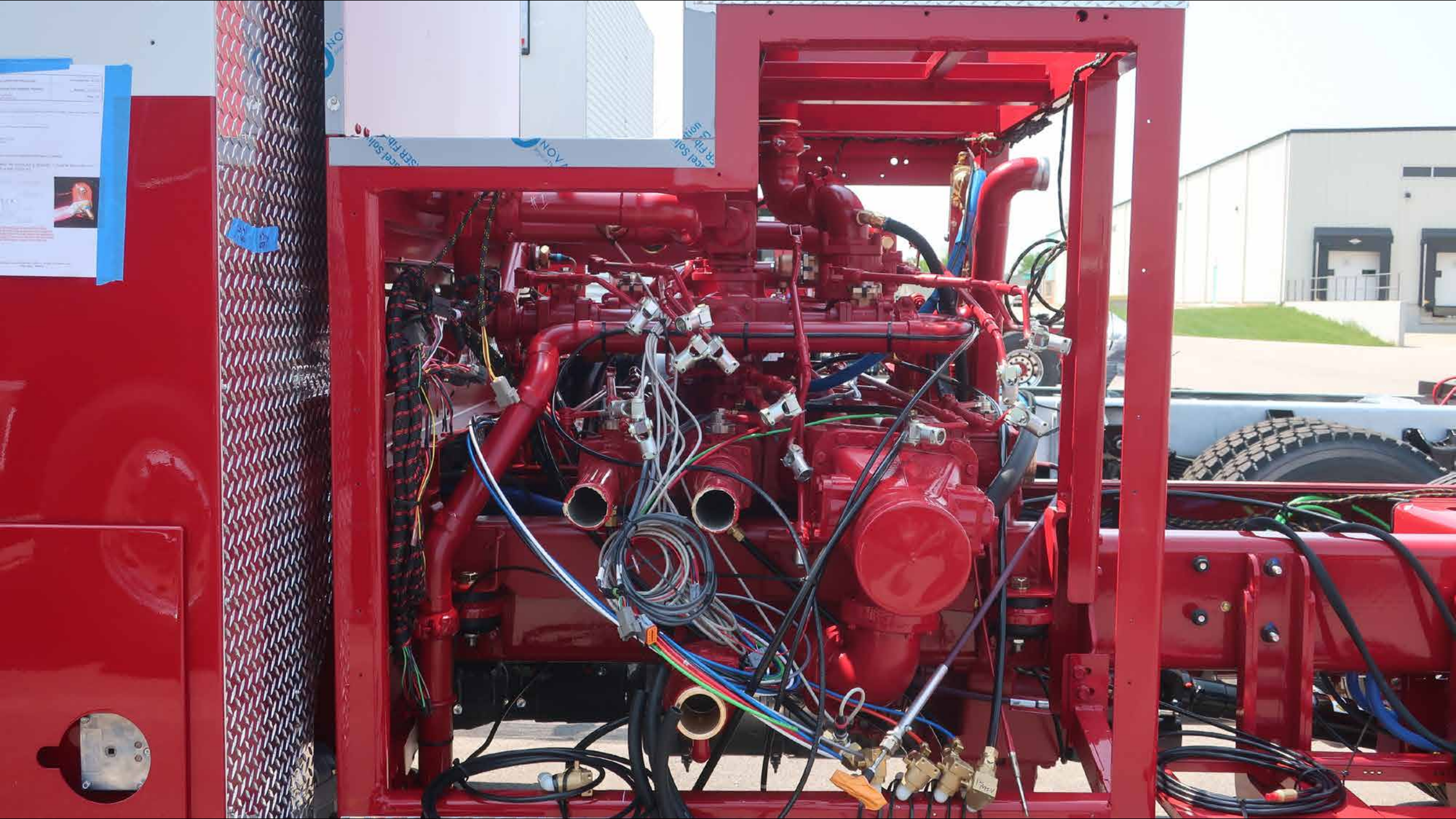
49. The vehicle must be...

50. The vehicle must be...







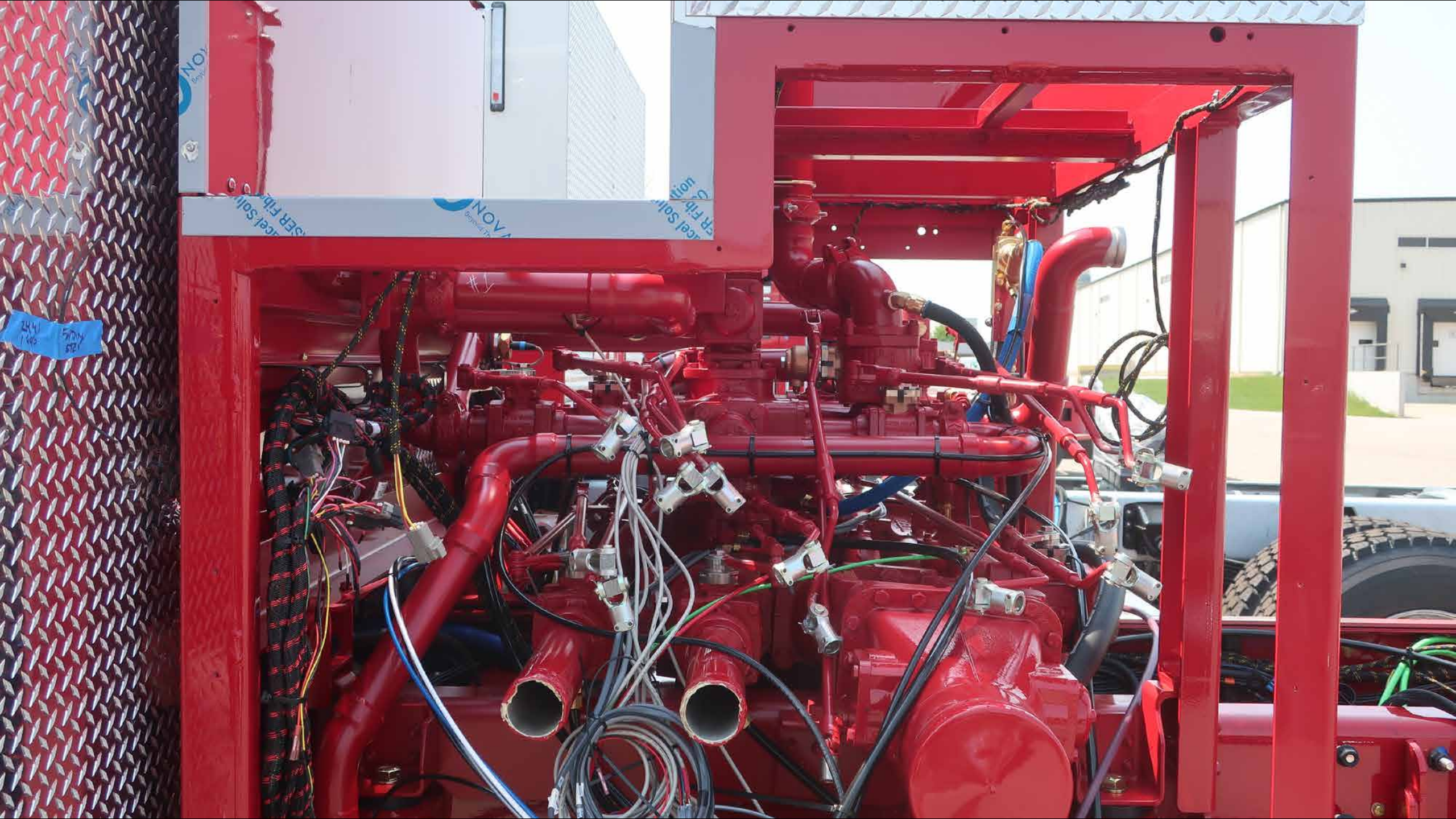


Technical specifications and safety information are provided on a white sheet of paper with blue tape on the left side of the image.

NOVA

NOVA

NOVA



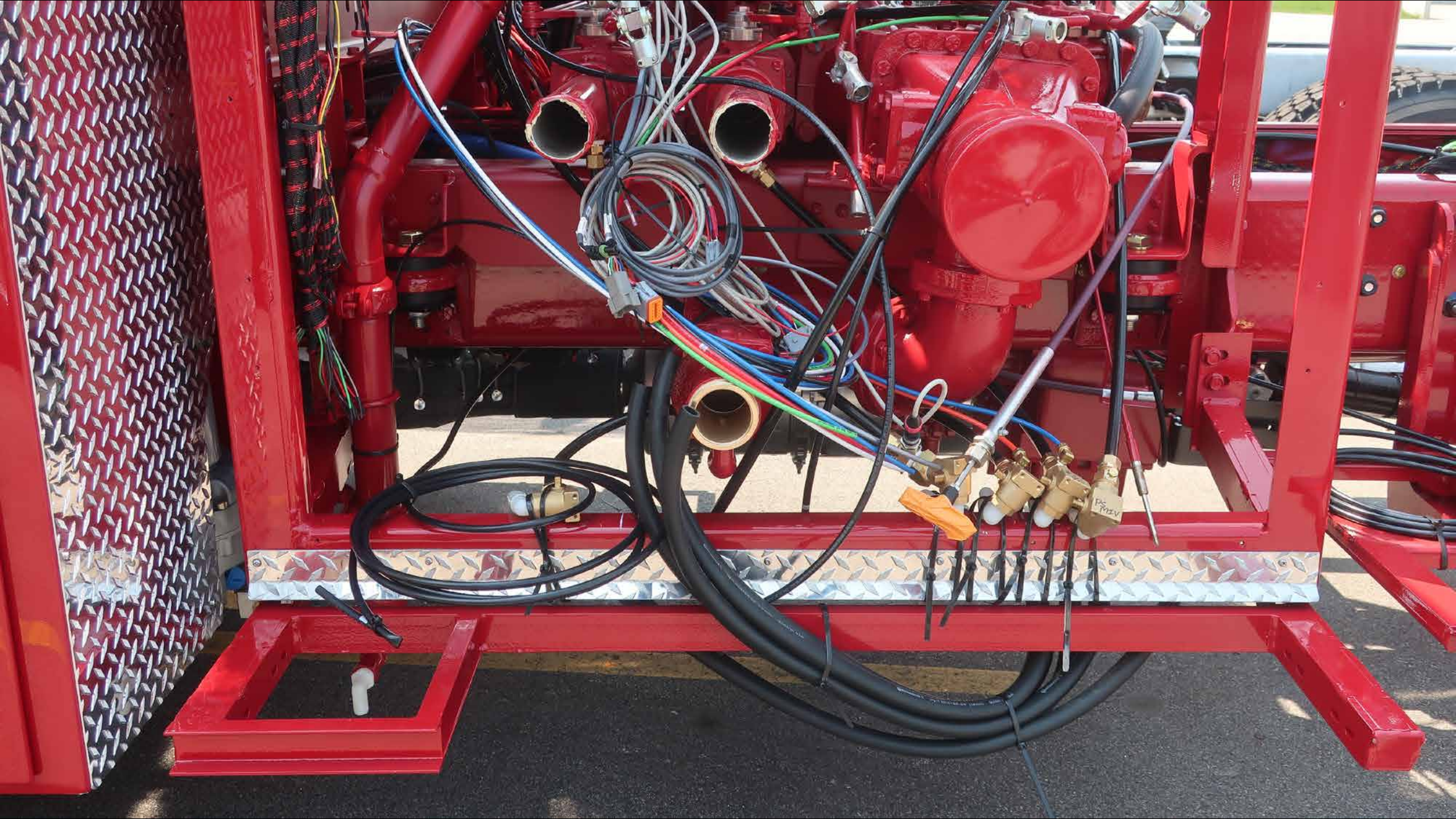
NOVON
Engine

NOVON
Engine

NOVON
Engine

NOVON
Engine

244
1-200
5/20/21
5/21





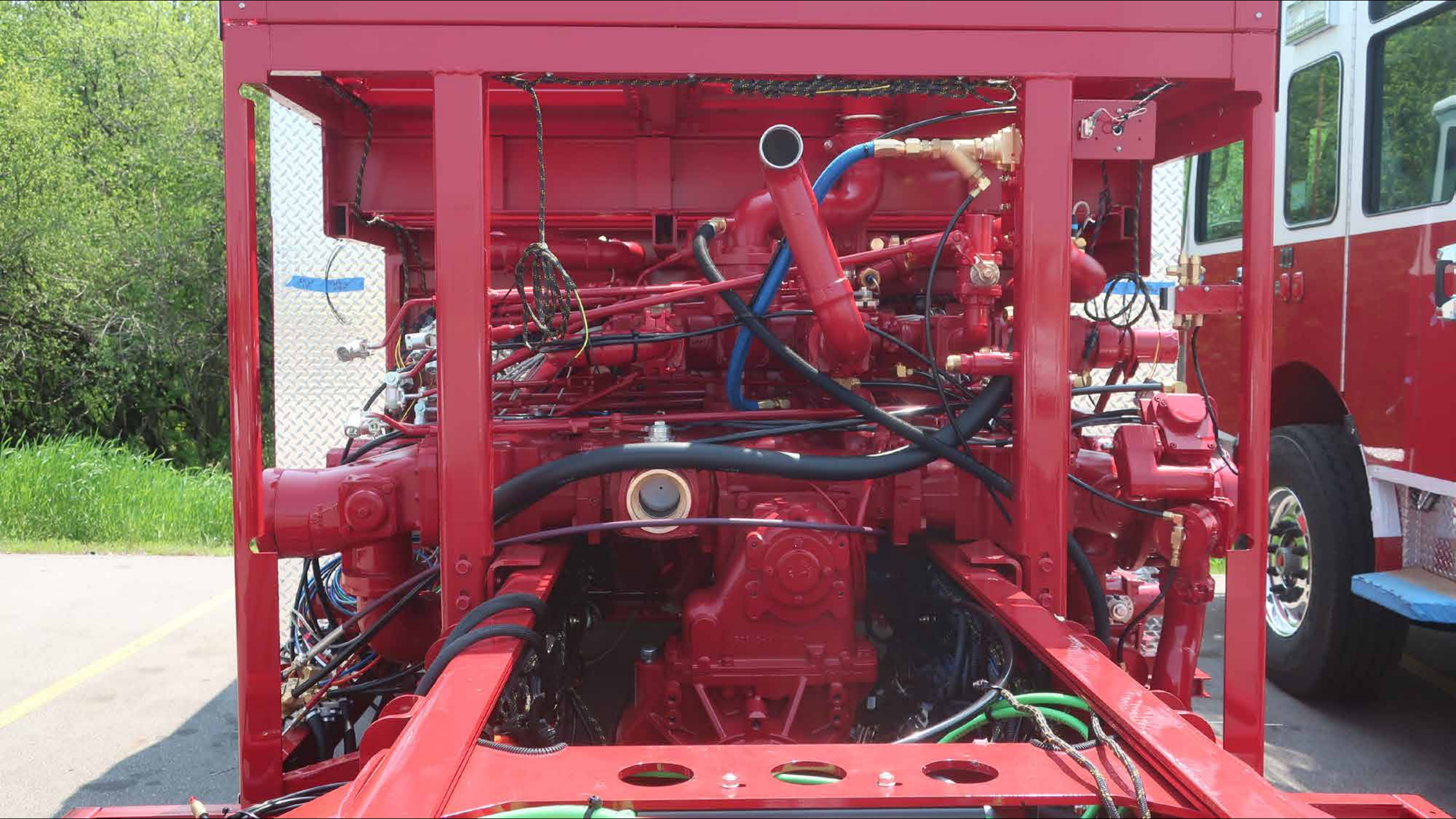


338153



34183

White label on the bottom of the chassis.

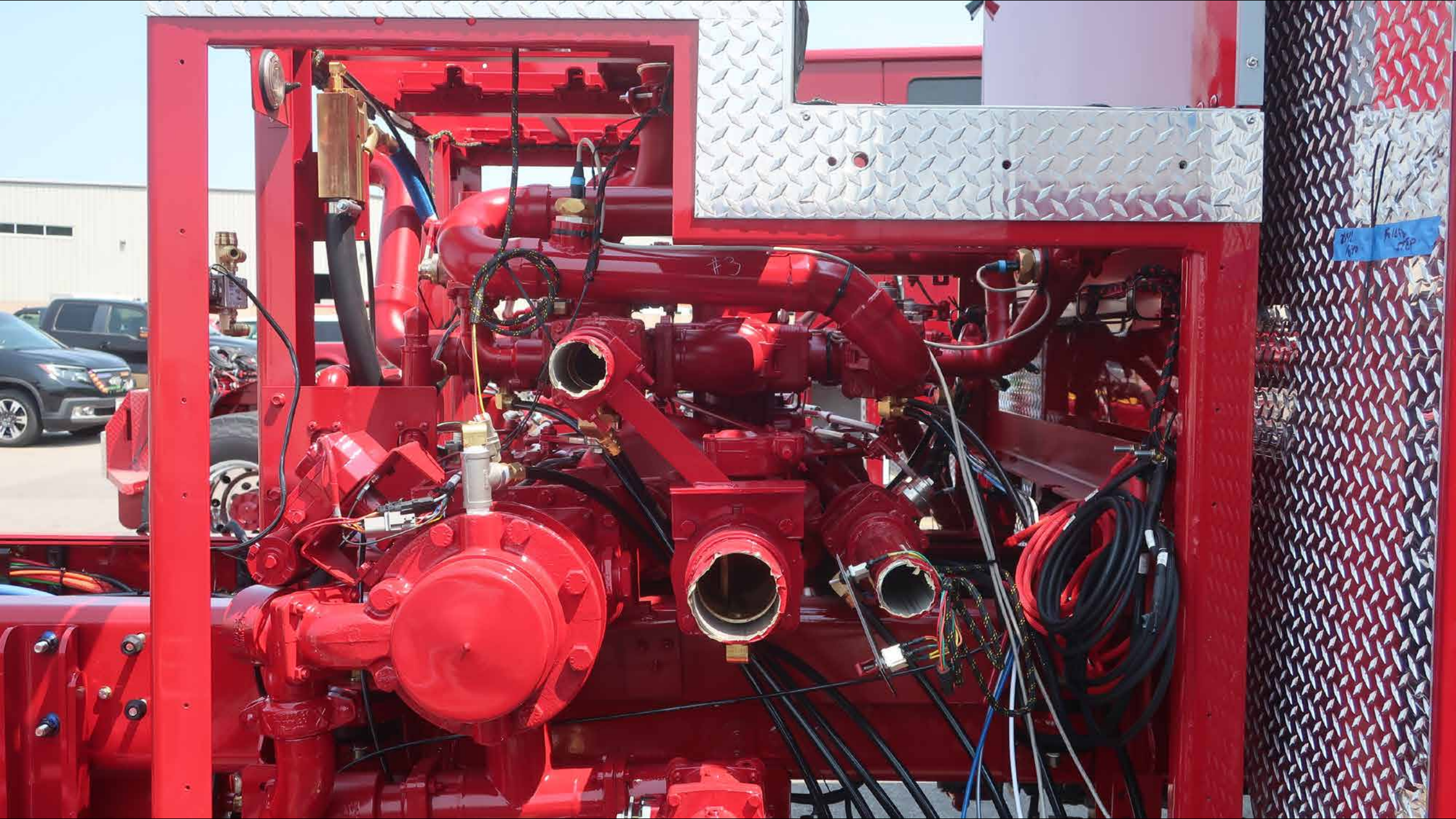




38183







#3

2011
K115
578P





















SIREN BRAKE











Pierce

38183-1
210

38183-1



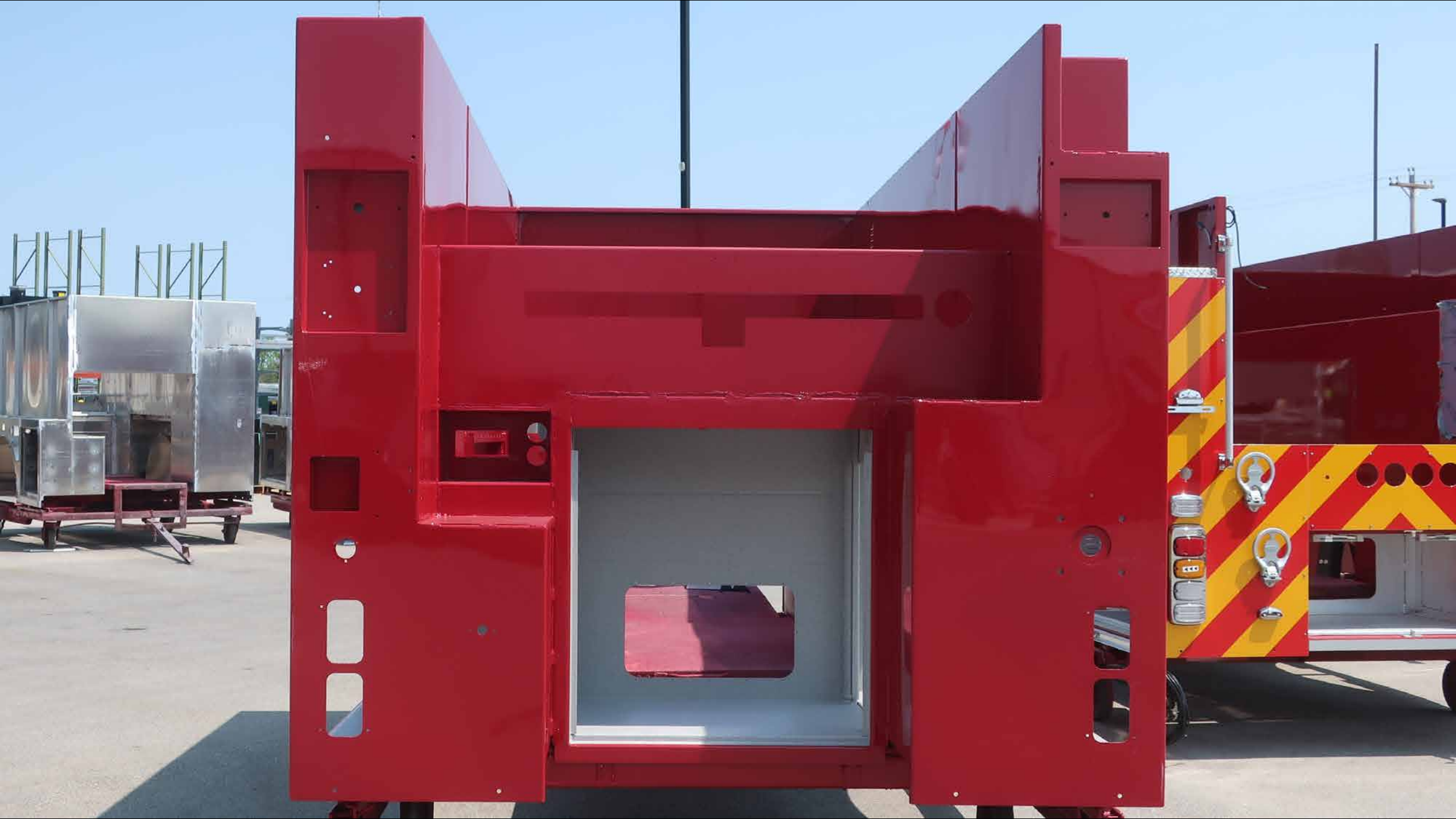


38183-1

Pierce











58193
410

38183-1





HUGHES FIRE EQUIPMENT