

Photo Album for Pierce Job 38183-01 Tucson Fire Department, AZ Custom Enforcer Pumper

Wk 6 Production ending May 24, 2024

- The pumper continues assembly at the 41 plant.
- The body has begun assembly at the 41 plant.



34183-1



HIGH ACRES
FIRE RESCUE

38153





NOTICE
PLEASE DO NOT TOUCH THE EQUIPMENT

38183-1

38183-1





Four fuses in a grey fuse block.

White paper with illegible text, possibly a manual or checklist.

SPOT - RESERVED
WHILE RACING

BATTERY
KLISSMAAL

Pierce
FIRE DEPARTMENT
911





Platts



START
STOP

IGNITION

E-M
OFF
PANEL
PANEL

ON
HI IDLE
OK-HI IDLE



POWER ○ ○ ○ ○ CH- MENU SEL



SIREN
BRAKE

DEFROST
DISABLE

LOAD
MANAGER

ENG BRK
ON/OFF

ENG BRK
HI/MED/LO

SIREN
HORN

PERIMETER
LIGHTS

MIRROR
HEAT

ALLISON
Transmission

NET PWR

R MODE

N

D

Pierce

AUTO

88

SNOW

SNOW

WINDSHIELD

ROADS TO
PUMP

1. FLOW TRUCK

2. SHUT TRUCK
TRANSMISSION TO
HOLDRAIL

3. SET PARKING
BRAKE

4. SHOW LEVEL
DOOR

5. ENGAGE PUMP
TRANSMISSION BAR
DRIVE

PUMP SHIF

PUMP ENGAGED

DR TO PUMP

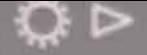
PULL TO APPLY
SYSTEM
PARK
BRAKE
PUSH TO
RELEASE

SPOTTER REQUIRED
WHEN BACKING



POWER ◀ ☀ ▶ CH- MENU SEL

POWER



CH-

MENU

SEL



SIREN
BRAKE



DEFROST
DISABLE



LOAD
MANAGER

ENG BRK
ON/OFF

ENG BRK
HI/MED/LO

SIREN
HORN

PERIMETER
LIGHTS

MIRROR
HEAT



Allison

DISENGAGE RE
WHEN VEHICLE
OR SLIPPERY S



Pierce

AUTO

88

MDT

EMERGENCY MASTER ROOF LIGHT FRONT WARNING SIDE WARNING LOWER REAR WARNING UPPER REAR WARNING

HIGH BEAM FLASH OFFROAD FRONT FLOOD HORN BEEP WIDE SCENE AIR FLOW

IGNITION

00
00



**EMERGENCY
MASTER**

**ROOF
LIGHT**

**FRONT
WARNING**

**SIDE
WARNING**

**LOWER
REAR
WARNING**

**UPPER
REAR
WARNING**



HIGH
BEAM
FLASH

OPTICOM

FRONT
FLOOD

DRIVERS
SCENE

PASS
SCENE

REAR
SCENE



AIR
HORN

CYCLE

OFF

MANUAL

WAIL


TONE 1

VOLUME

BRAKE

RADIO

TONE 2

 FEDERAL SIGNAL

MAN 2 HF T1
MAN 1
RAD T2
T3
MORN
RAD

WHELEN

The top control panel features a red rectangular button on the left. To its right are three rows of buttons: 'MAN 2', 'MAN 1', and 'RAD'. A central knob is labeled 'HF' above it. To the right of the knob are three rows of buttons: 'T1', 'T2', and 'T3'. Further right is a 'MORN' button and a rotary knob labeled 'MID-SPEAK'. The brand name 'WHELEN' is printed on the right side.

HIGH LEFT
OFF RIGHT
LOW SPLIT
FLASH
POWER FUNCTION DIRECTION

WHELEN TRAFFIC

The bottom control panel has a red oval button on the left labeled 'POWER'. A central knob is labeled 'FUNCTION'. To the right of the knob are three indicator lights labeled 'DIRECTION'. Above the knob are three rows of labels: 'HIGH LEFT', 'OFF RIGHT', and 'LOW SPLIT FLASH'. The brand name 'WHELEN TRAFFIC' is printed on the right side.







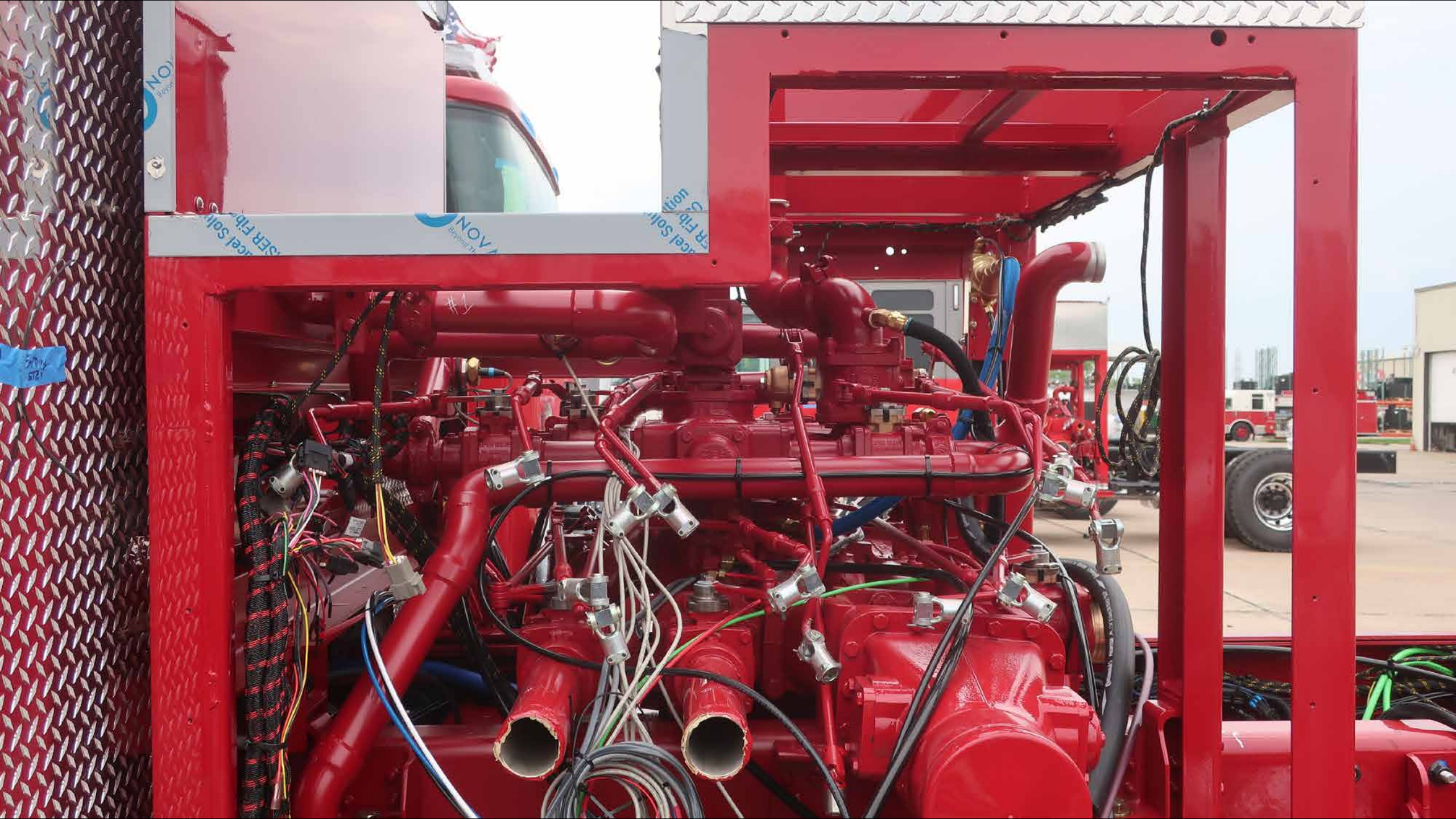












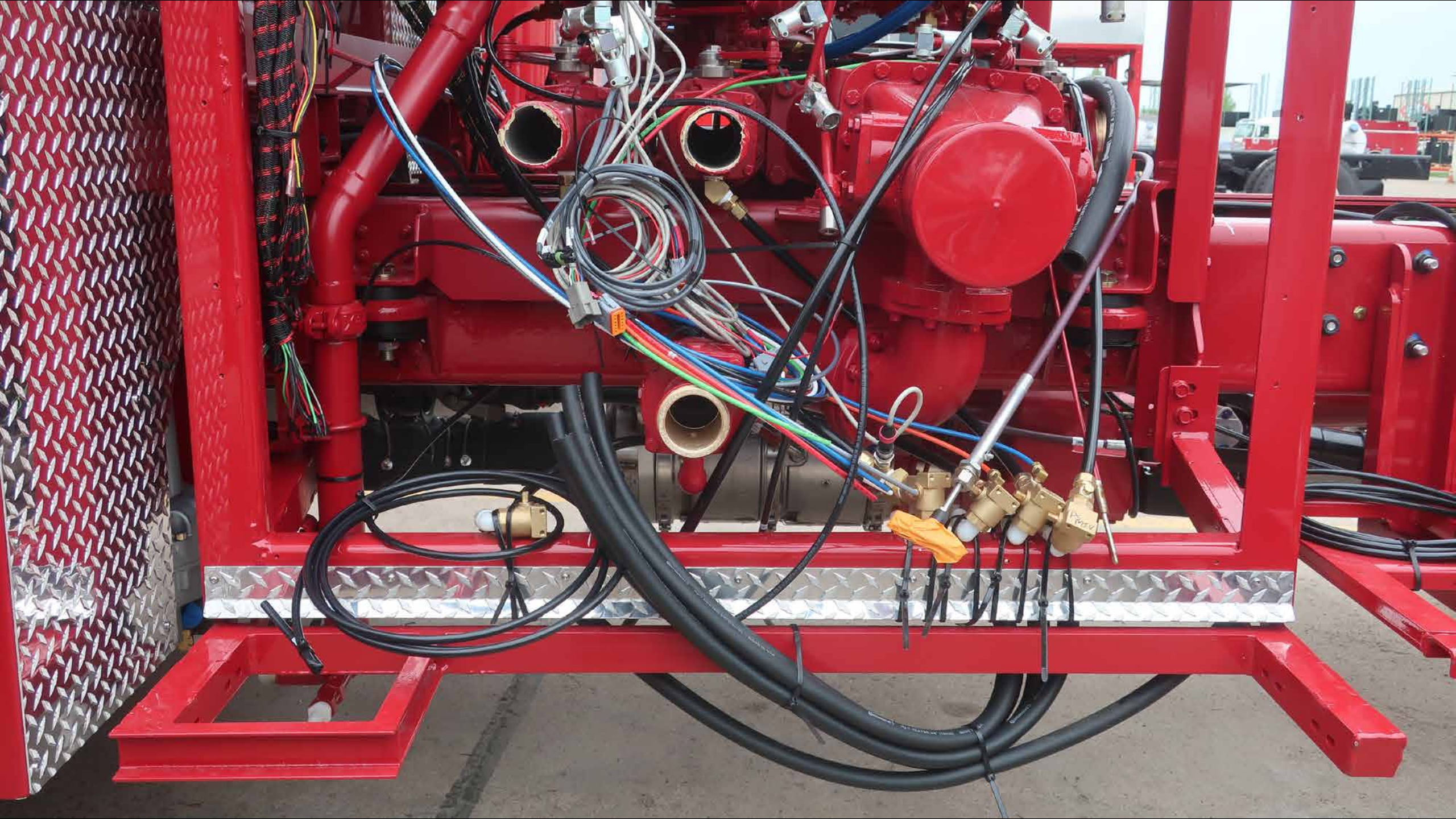
NOVA
Brands

NOVA
Brands

NOVA
Brands

NOVA
Brands

5700
5721





HIGH ACRES
FIRE RESCUE

38183

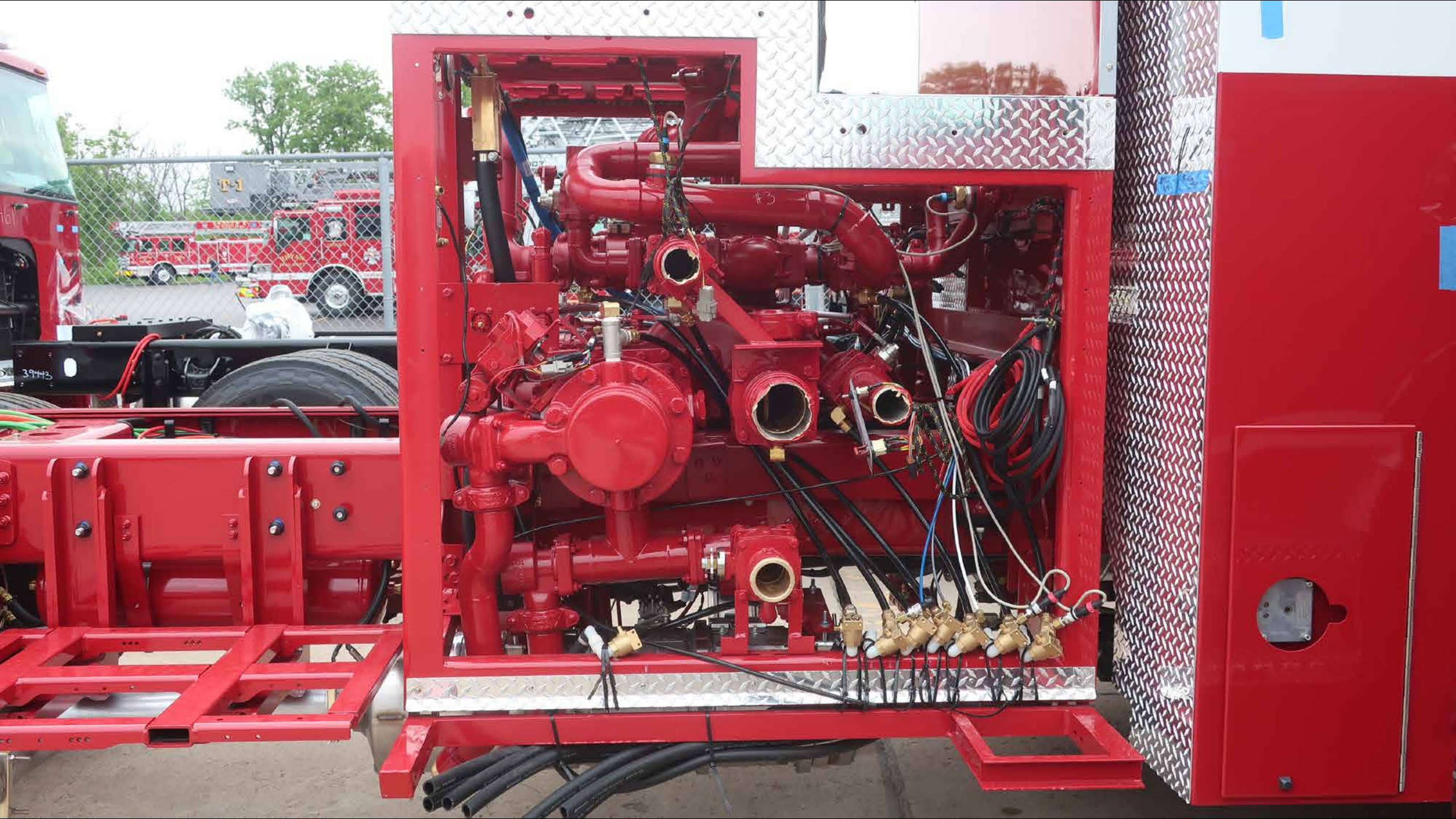


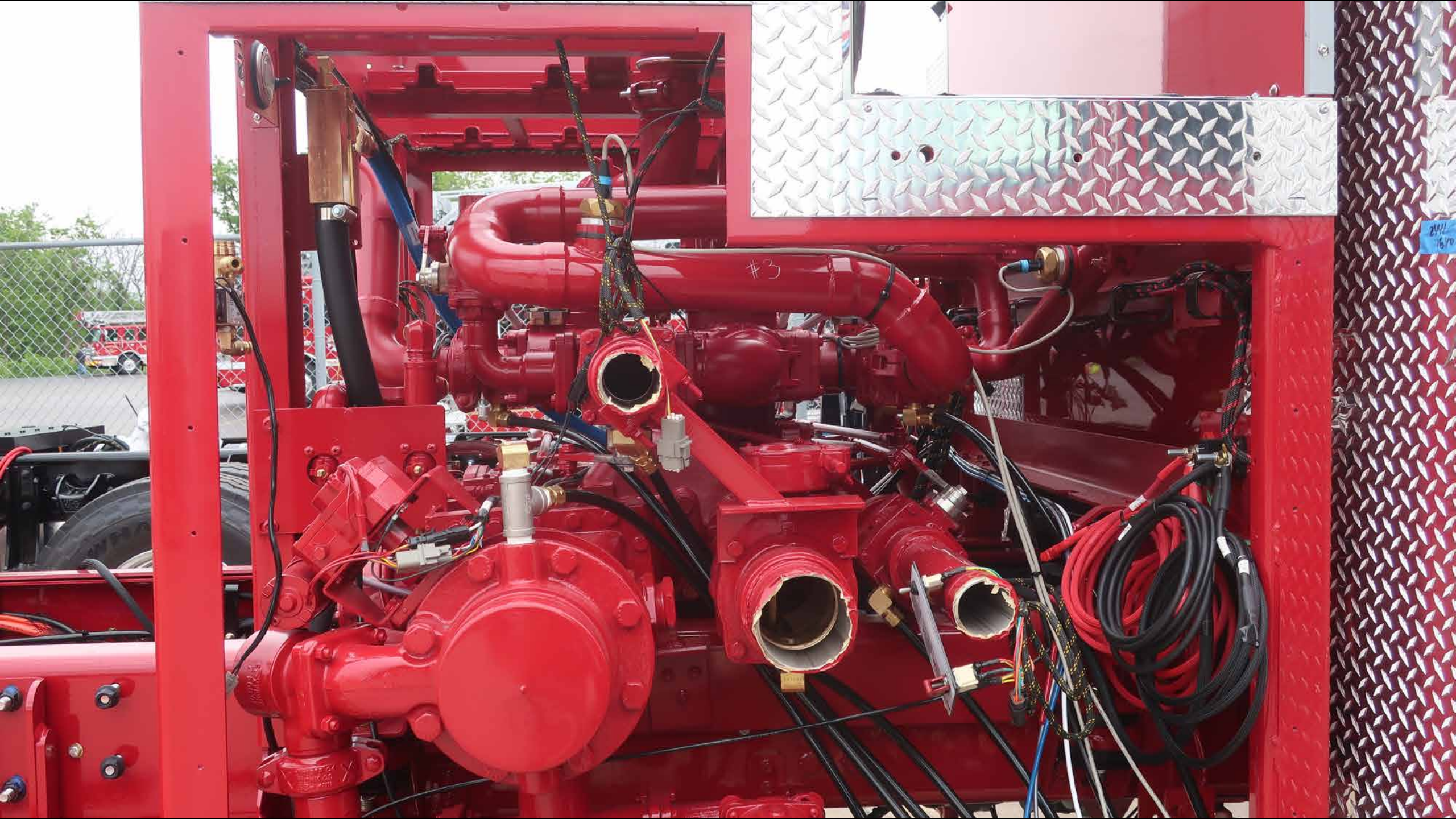


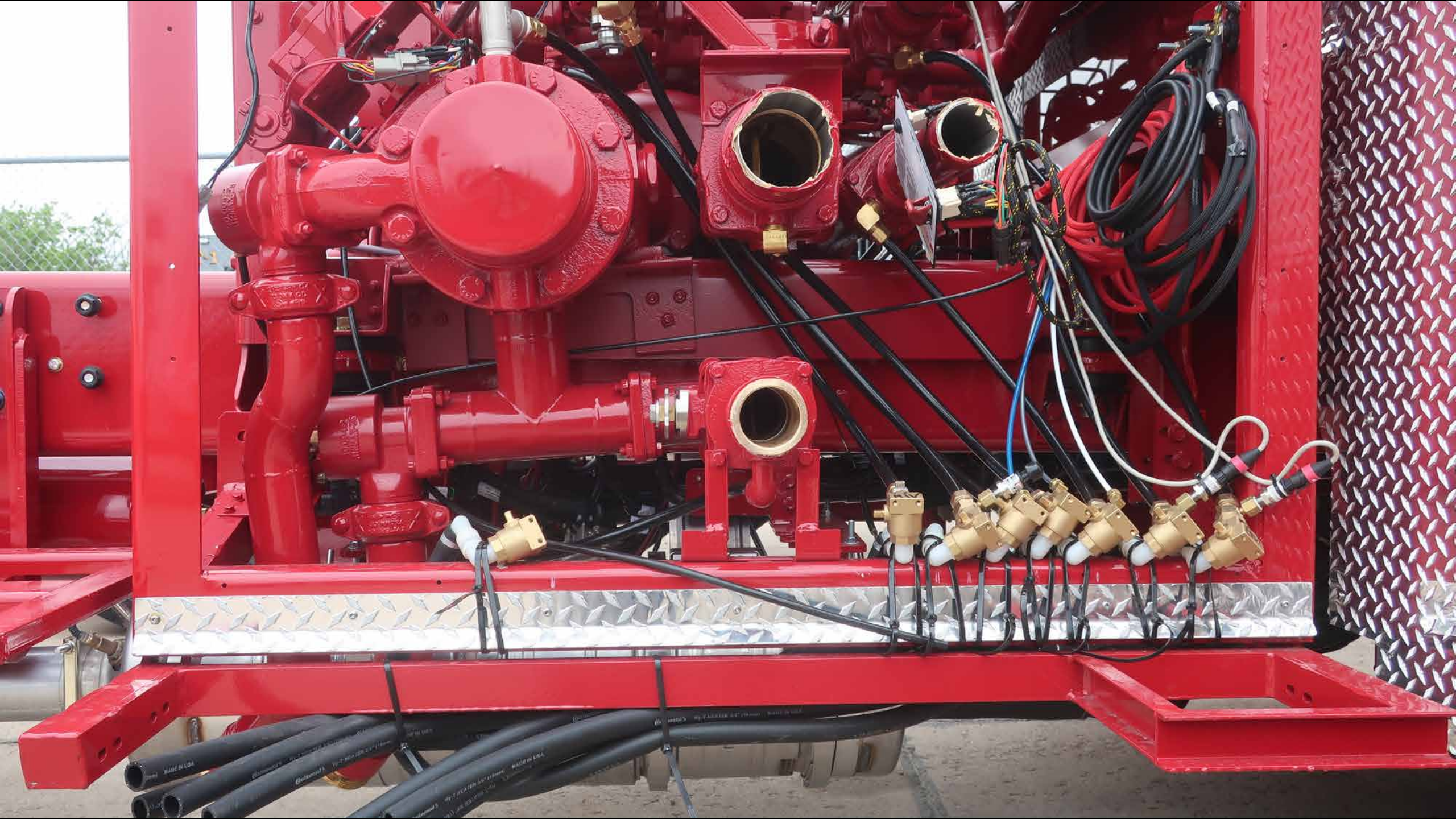


LEHIGH
FIRE

2011
1070



























SIREN BRAKE











38183-1

AUBURN

Green container



38185-1









38183-1

Pierce



HUGHES FIRE EQUIPMENT