

# Photo Album for Pierce Job 38183-01 Tucson Fire Department, AZ Custom Enforcer Pumper

## Wk 7 Production ending May 31, 2024

- The pumper continues assembly at the 41 plant.
- The body continues assembly at the 41 plant.



30183-1

1-2018





38183

38183



LEHIGH ACRES  
FIRE RESCUE

38183

38183



NOTICE  
PLEASE ADVISE THE  
MANUFACTURER OF ANY  
REPAIRS OR MODIFICATIONS

ITEM # 38183-1  
DATE 10/15/15

38183-1

38183-1

38183-1

2810157











11A028  
ISDOT







POWER < > CH MENU SET

SIREN BRAKE

DEFROST DISABLE

LOAD MANAGER

ENG BRK ON/OFF

ENG BRK HI/MED/LO

SIREN HORN

PERIMETER LIGHTS

MIRROR HEAT

MODE

R

N

D

Pierce

AUTO

88

ROAD TO PUMP

1. STOP BRICE

2. SHIFT BRICE TRANSDUCER TO NEUTRAL

3. SET PARKING BRAKE

4. PULL UP LEVER DOWN

5. ENGAGE BRICE TRANSDUCER BR DRIVE

PUMP SHIF

PUMP ENGAGED

OK TO PUMP

PULL TO APPLY  
SYSTEM PARK  
HALDEX  
PUSH TO  
RELEASE

SPOTTER REQUIRED  
WHEN BACKING



POWER



CH-

MENU

SEL



**SIREN  
BRAKE**

**DEFROST  
DISABLE**

**LOAD  
MANAGER**

ENG BRK  
ON/OFF

ENG BRK  
HI/MED/LO

SIREN  
HORN

PERIMETER  
LIGHTS

MIRROR  
HEAT

© Allison

WHEN VENT  
OR SLIPPE





POWER <D> >D> ON MENU SEL



SIREN  
BRAKE

DEFROST  
DISABLE

LOAD  
MANAGER



ENG BRK  
OFF



ENG BRK  
HI/MED/LO



SIREN  
HORN



PERIMETER  
LIGHTS



MIRROR  
HEAT



HAUX

MODE

R

N

D

▲

▼

Pierce

AUTO

88

❄️

🌬️



Pierce

AUTO

88



EMERGENCY MASTER ROOF LIGHT FRONT WARNING SIDE WARNING LOWER REAR WARNING UPPER REAR WARNING

HIGH BEAM FLASH OPTICOM FRONT FLOOR DRIVERS SEAT AND SEAT NEW SWIV

ROCK SWITCH

00  
00



**EMERGENCY  
MASTER**

**ROOF  
LIGHT**

**FRONT  
WARNING**

**SIDE  
WARNING**

**LOWER  
REAR  
WARNING**

**UPPER  
REAR  
WARNING**



HIGH  
BEAM  
FLASH

OPTICOM

FRONT  
FLOOD

DRIVERS  
SCENE

PASS  
SCENE

REAR  
SCENE



AIR  
HORN

CYCLE

BRAKE

RADIO

MANUAL  
OFF  
WAIL  
TONE 1  
TONE 2

VOLUME

 FEDERAL SIGNAL







183-1

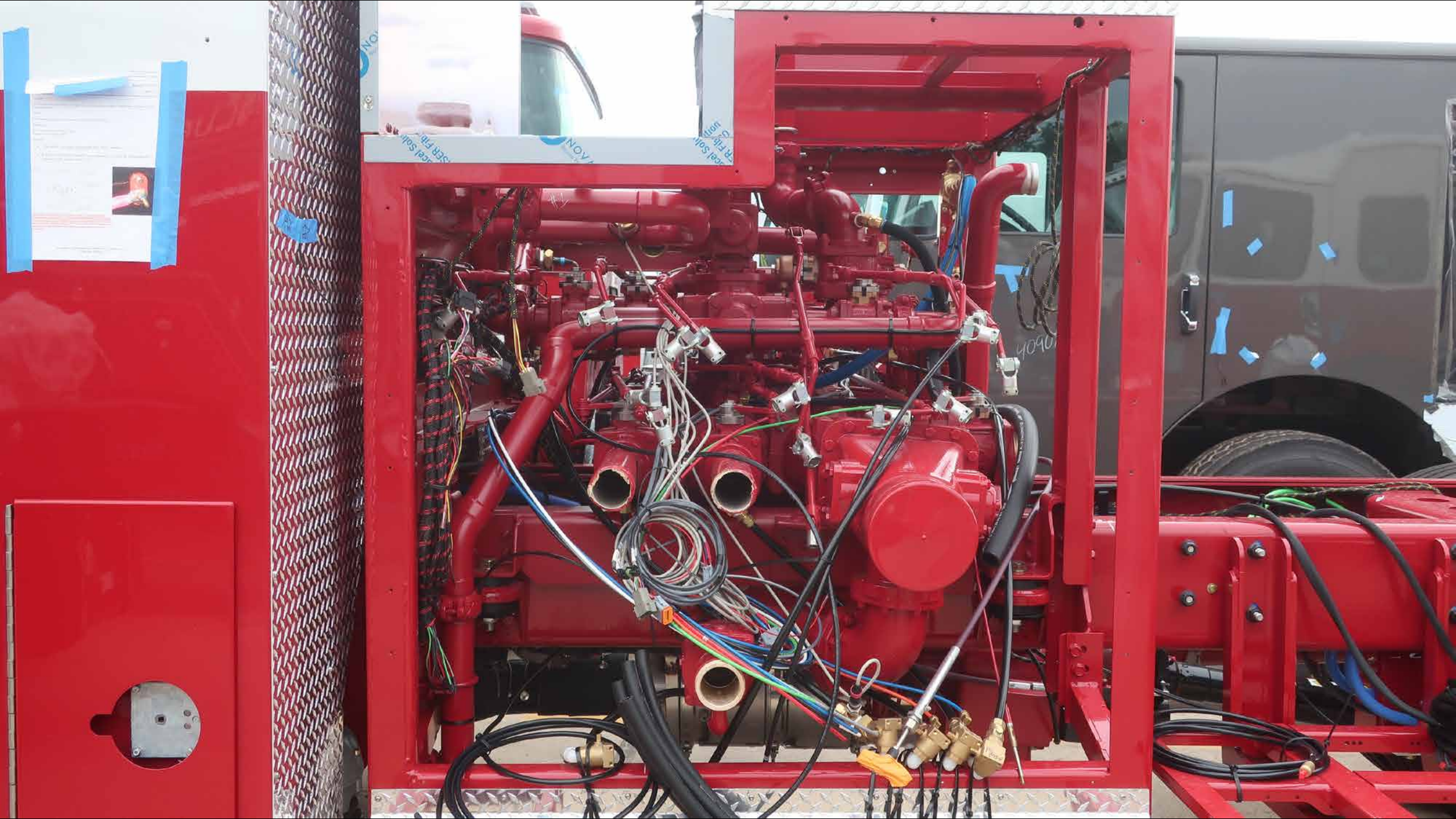
Series 1

Fire Department  
Fire Station  
183-1

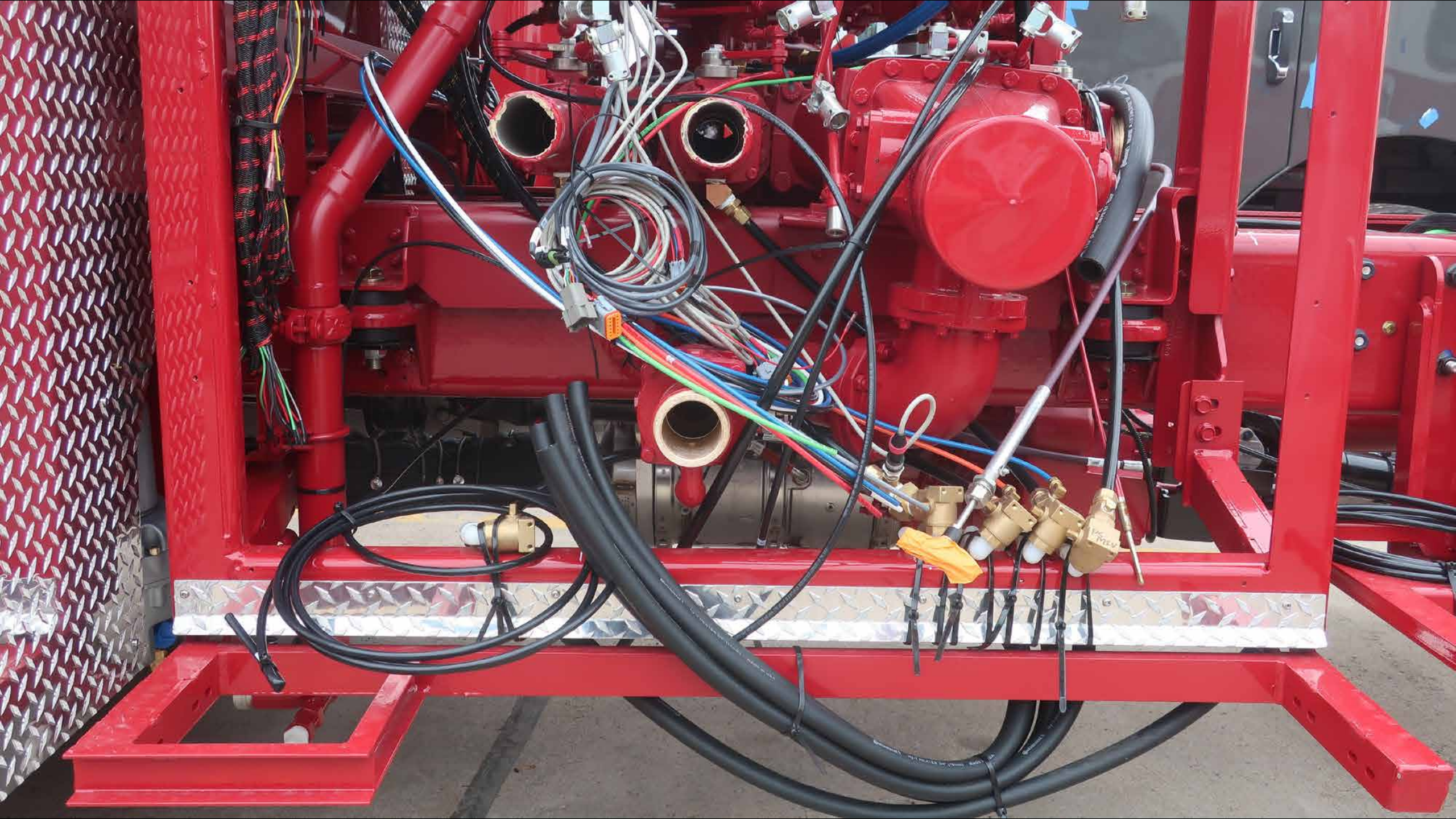










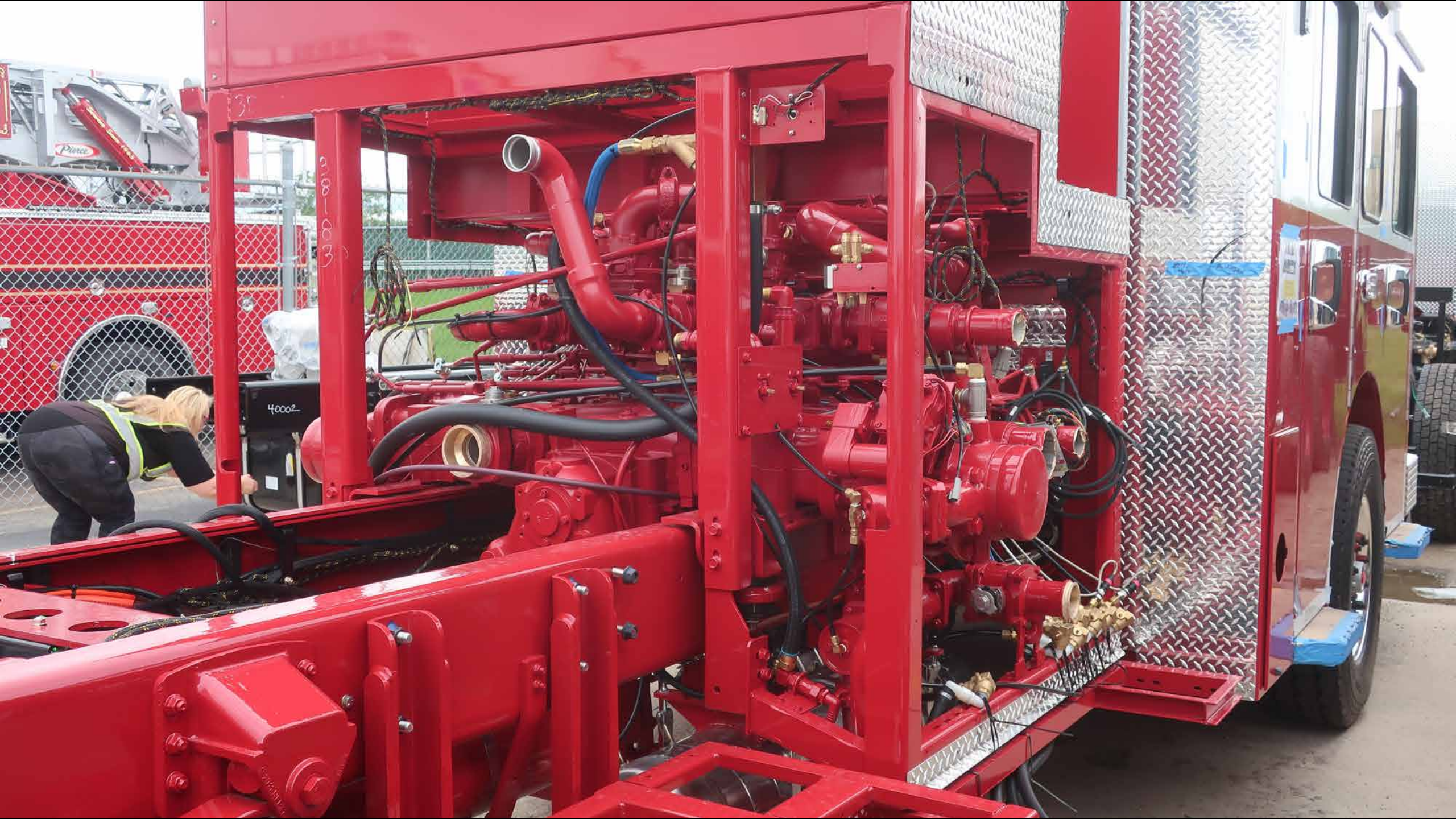


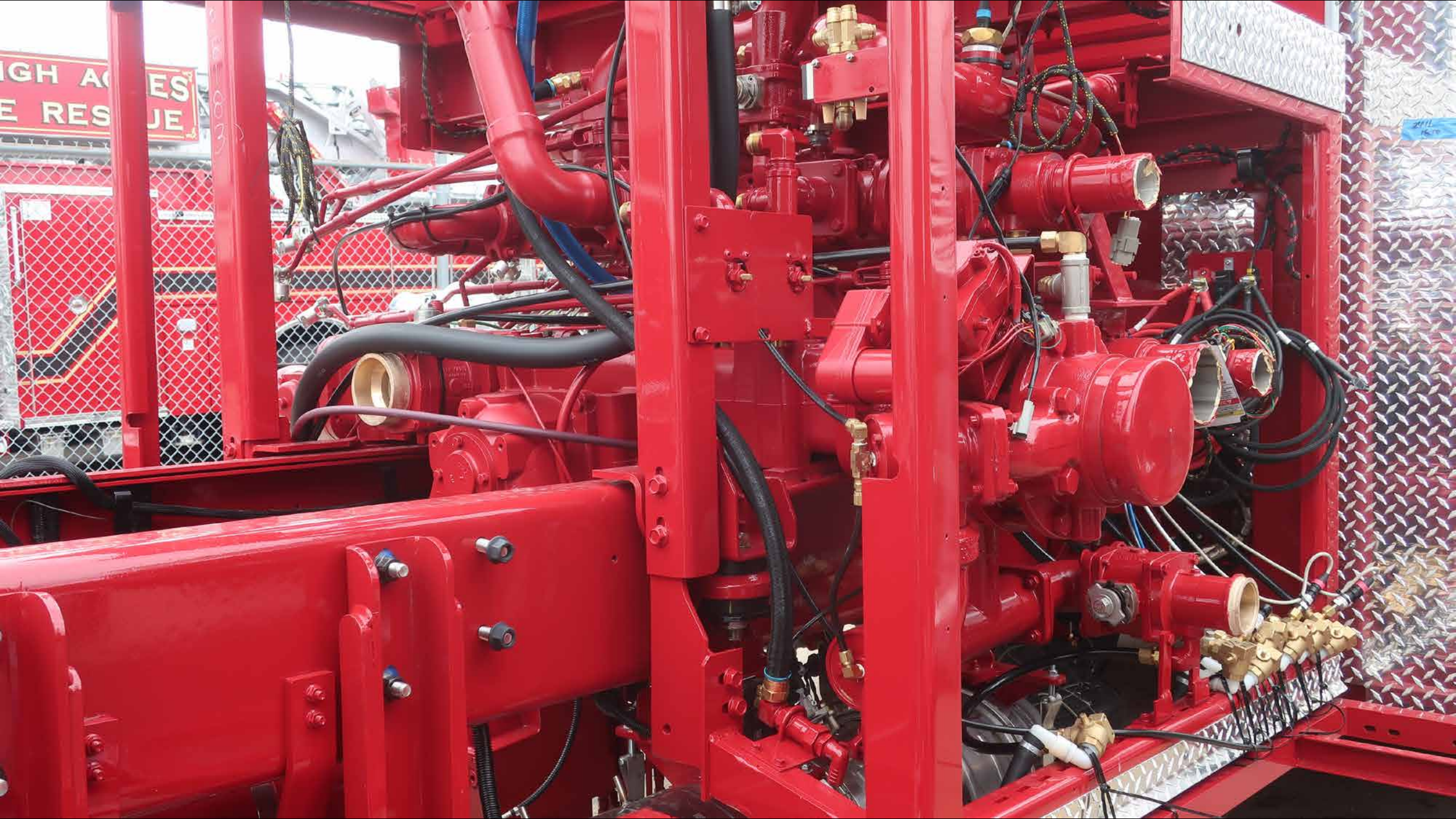


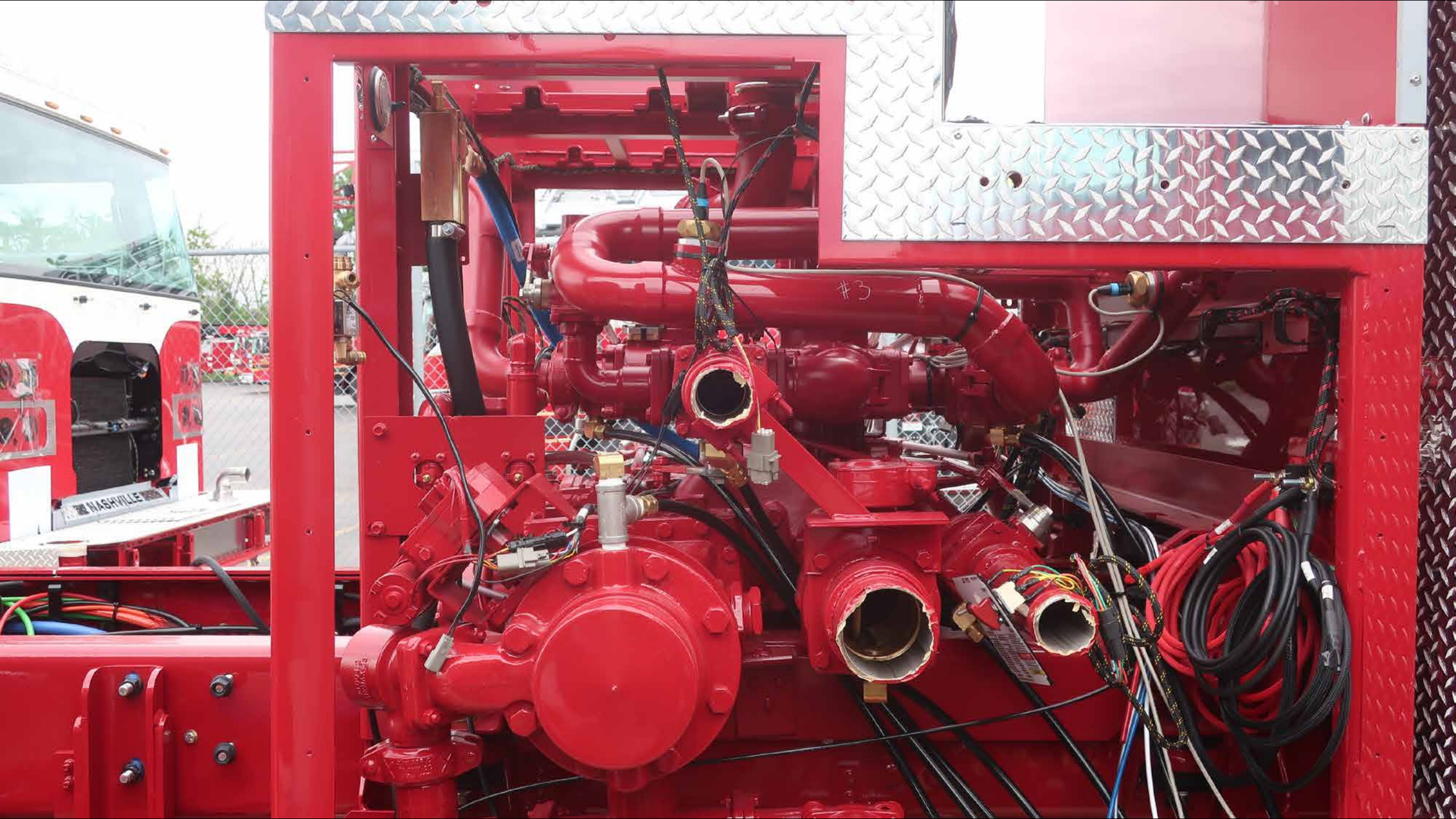
35

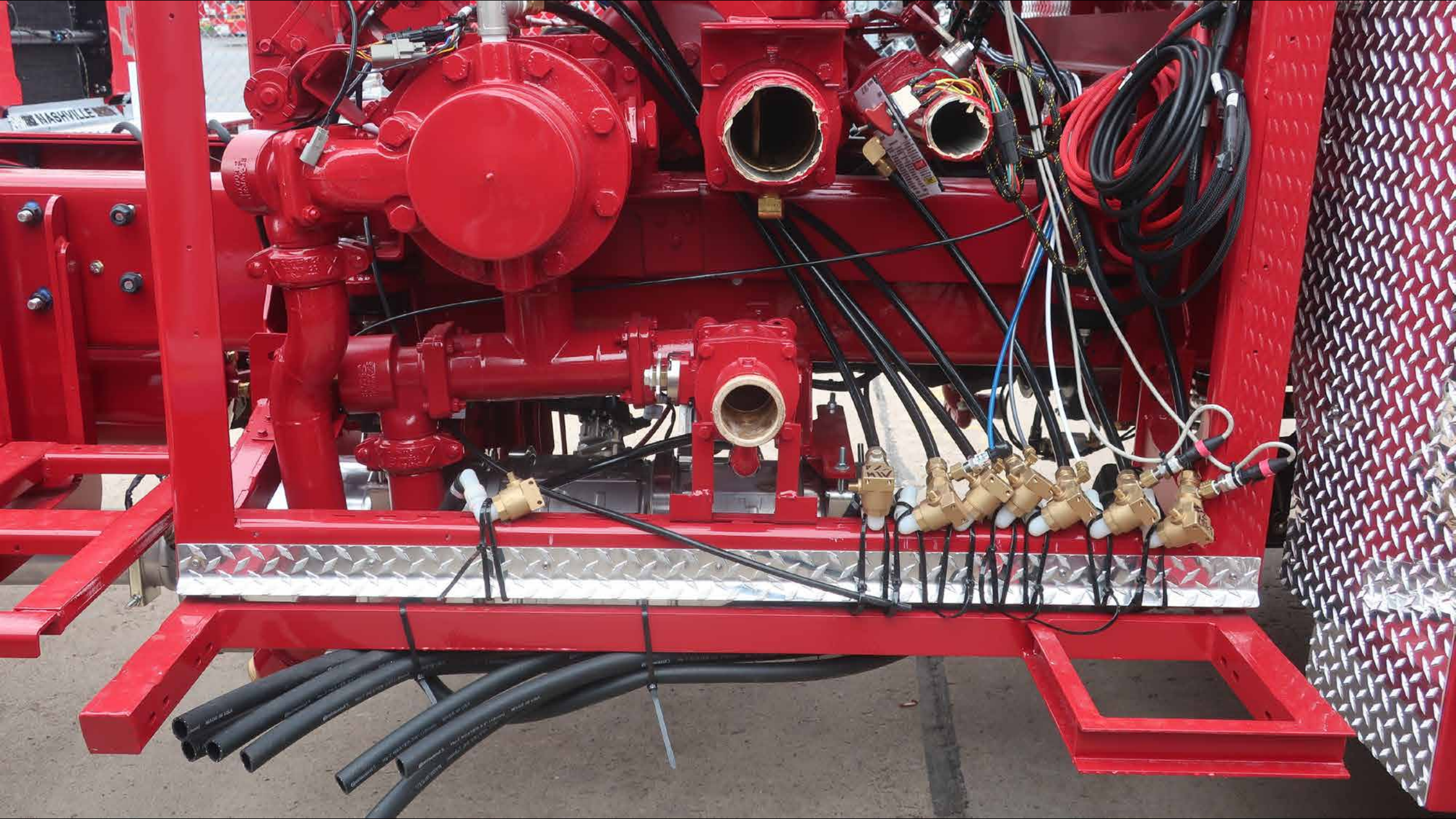
W20-0010















FIRE RES  
CUE

Pierce











LEHIGH ACRES  
FIRE RESCUE

OPEN BRAKE





AIR HORN



MECHANICAL  
SIREN



SIREN BRAKE







38183-1



39183-1

BWW FIRE / RESCUE















**HUGHES FIRE EQUIPMENT**