

Photo Album for Pierce Job 38183-02 Tucson Fire Department, AZ Custom Enforcer Pumper

Wk 5 Production ending May 17, 2024

- The cab has begun assembly at the Neenah plant.
- The chassis continues assembly at the Neenah plant.
- The pump continues assembly at the IPP plant.
- The body is staged to begin the paint process at the 41 plant.



38183-2

ITEM NO: 38183-01
DESCRIPTION: Fire Truck Chassis
QUANTITY: 1
DATE: 11/11/11
BY: [Signature]
CHECKED BY: [Signature]
APPROVED BY: [Signature]

38183-2

LANDFILL
LESS (F&E)



Fire
CAB BODY
QUALITY GATE 1
DP / DELA

883-2







2790131



NOTICE
DO NOT TOUCH
THESE CONTROLS

30183-2






























SIREN BRAKE

Dual Port USB

INPUT
12V DC

Dual Port USB

INPUT
12V DC



AIR HORN

ELECTRONIC
SIREN









38183-2

38183-2

38183-2



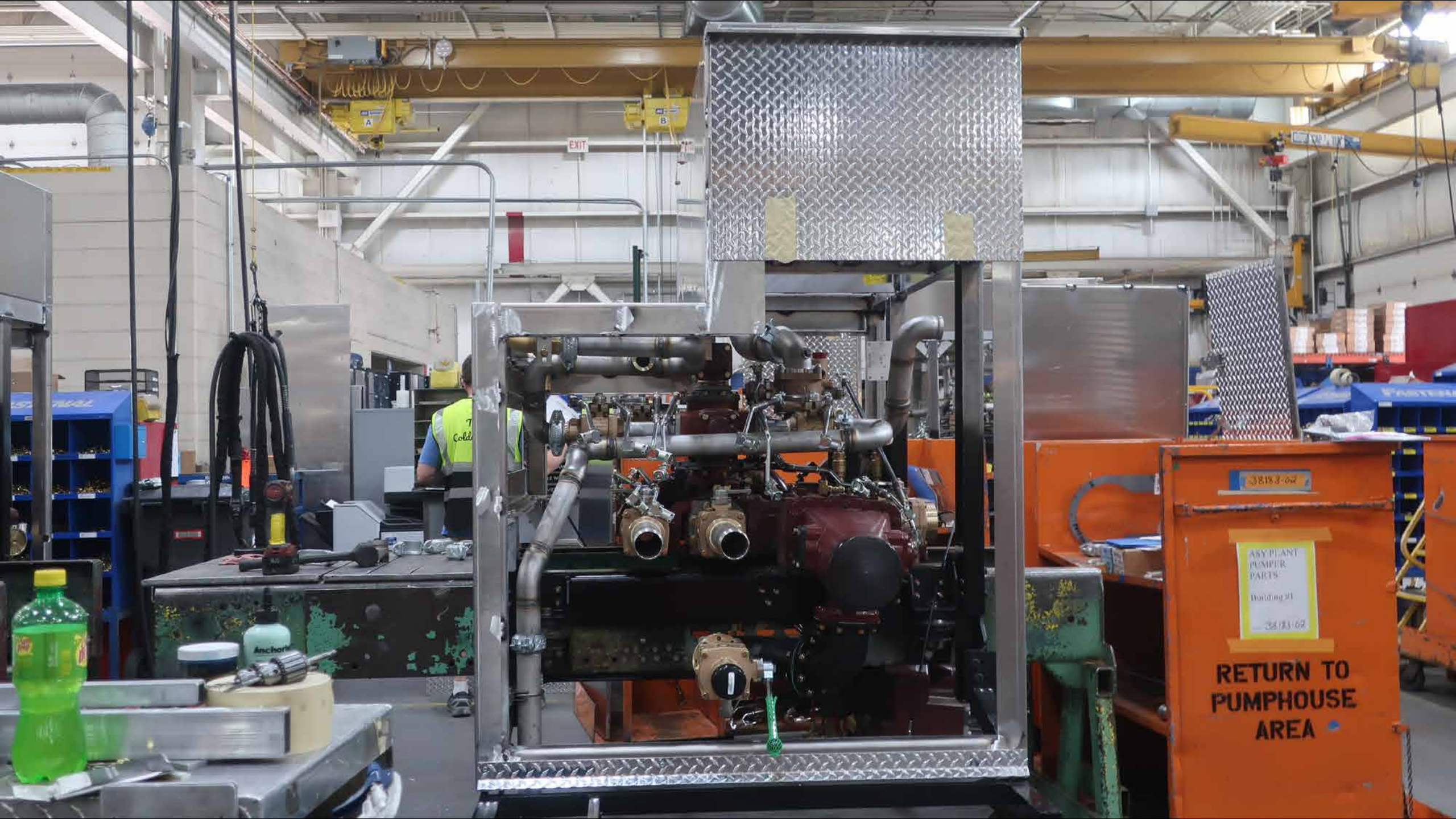
38183-2

38183-7



35018352



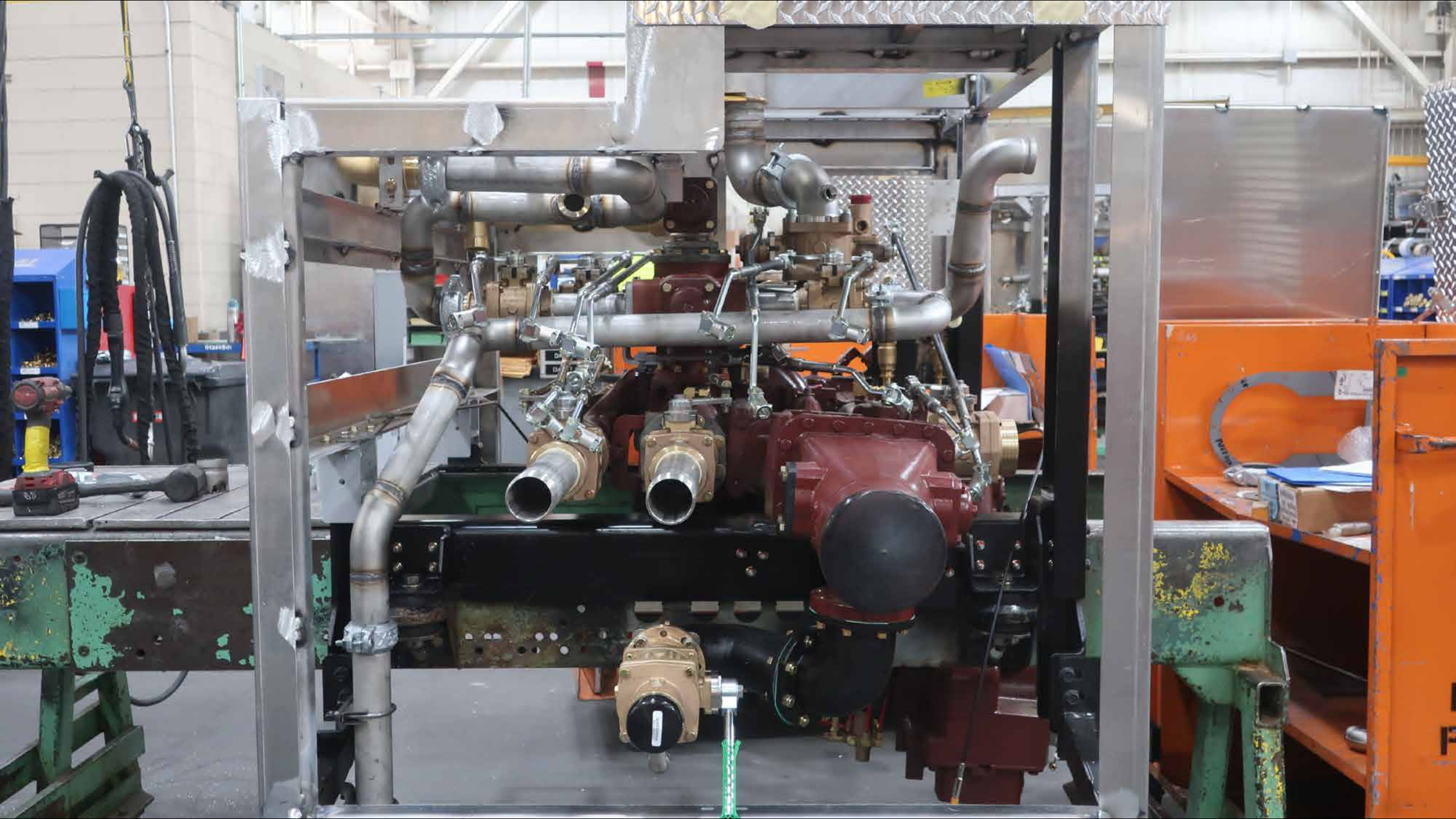


EXIT

38183-62

ASYLANT
PUMPER
PARTS
Building 31
38183-62

**RETURN TO
PUMPHOUSE
AREA**





38183-02

ASY PLANT
PUMPER
PARTS
Building #1
38173-02

**RETURN TO
PUMPHOUSE
AREA**

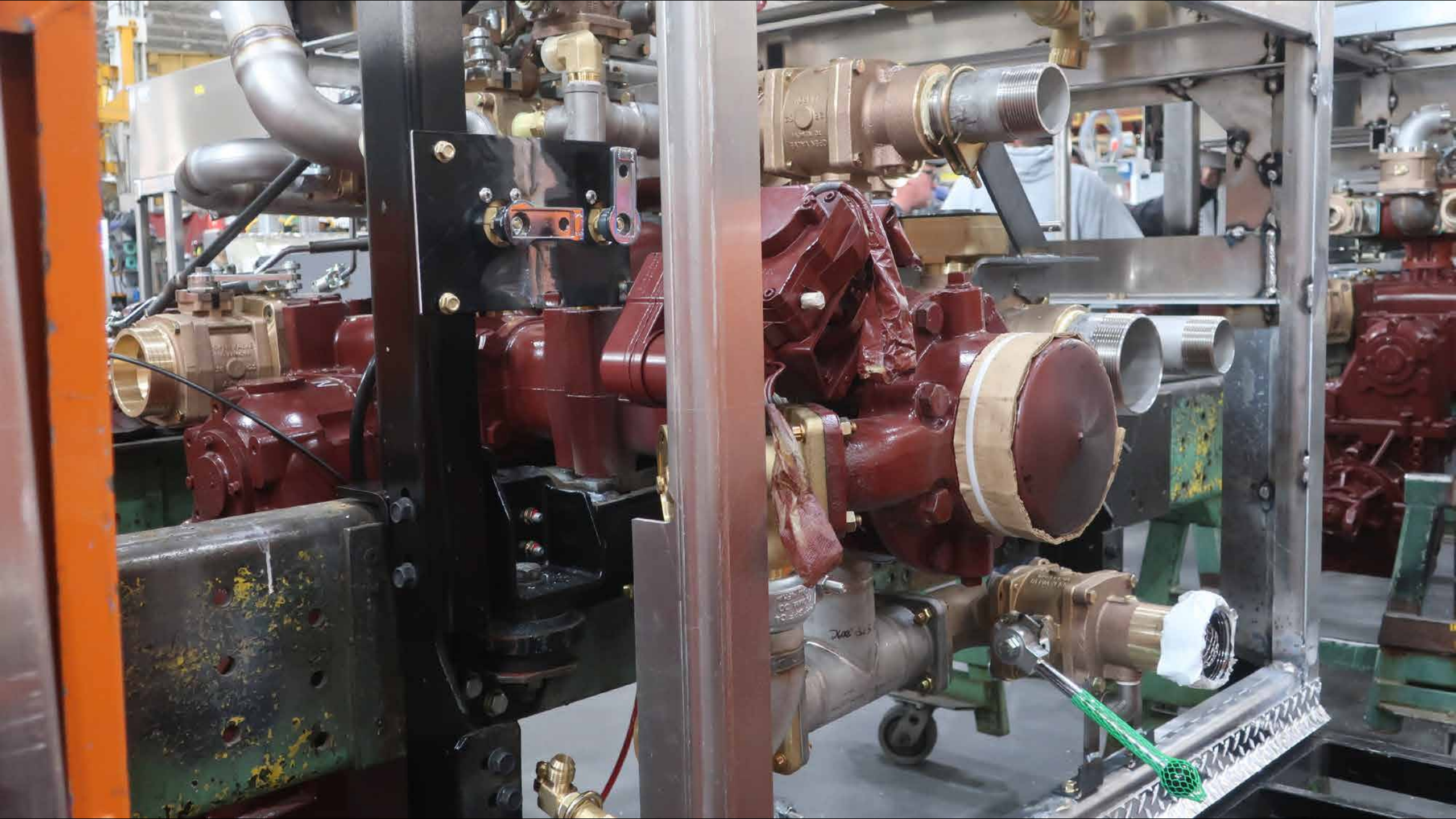


CAP 1/4 TON

ASX
MC

38183-03

ASY PLANT
PUMPER
PARTS
Building #1
38183-03









EXIT

Pierce
PART 15

RANDY PALTZER
SCOTT TEWS
FAVIAN TAMAYO
DALE WATERS
DAVID JONES

1001

RETURN TO
PUMPHOUSE
AREA



38183-02
SHIP

38183-2

38183-2

Note

Note

31





38183-

38183



38153 1-02

38153 1-02

1st
1/12







38183-00

5410

Power
Monitor

1000

88



HUGHES FIRE EQUIPMENT