

# Photo Album for Pierce Job 38183-02 Tucson Fire Department, AZ Custom Enforcer Pumper

## Wk 6 Production ending May 24, 2024

- The cab and pump have been mounted to the chassis and the pumper continues assembly at the Neenah plant.
- The body has begun the paint process at the 41 plant.







38182 Z













White paper with text, likely a manual or specification sheet, attached to the interior door panel.

BATTERY VOLTAGE  
Gauge with a red needle and scale, mounted on the exterior of the door.

Red emergency stop button with a circular cover, mounted on the exterior of the door.

38183-2  
Blue identification tag with white text, mounted on the exterior of the door.

38183-2  
Black identification tag with white text, mounted on the interior door panel.

Pierce  
Logo on the driver's seat.





38183-2



ULTRA LOW SULFUR  
DIESEL FUEL ONLY

START

IGNITION

E-M  
OFF  
PANEL  
PANEL

ON  
HI IDLE  
OK-HI IDLE



Pierce

4F60NLT15

MPH  
140  
120  
100  
80  
60  
45  
30  
15  
0

85  
75  
65  
55  
45  
35

150  
120  
90  
60  
30  
0

150  
120  
90  
60  
30  
0

150  
120  
90  
60  
30  
0

POWER ◀ ▶ CH- MENU SET

SIREN  
BRAKE

DEFROST  
DISABLE

LOAD  
MANAGER

ENG BRK  
ON/OFF

ENG BRK  
HI/MED/LO

SIREN  
HORN

PERIMETER  
LIGHTS

MIRROR  
HEAT

Alison  
Transmission

R MODE

N

D

Pierce

AUTO 88

SNOWflake

WINDSHIELD

PULL TO APPLY  
SYSTEM  
PARK  
HALDEX  
PUSH TO  
RELEASE

WARNING

ROAD TO  
PUMP

1. STOP TRUCK

2. SHIFT TRUCK  
REAR/DRIVE TO  
NEUTRAL

3. SET PARKING  
BRAKE

4. BRIDGE LEVER  
DOWN

5. ENGAGE TRUCK  
REAR/DRIVE INFO  
DRIVE



PULL TO APPLY  
SYSTEM  
PARK  
HALDEX  
PUSH TO  
RELEASE

SIREN  
BRAKE

DEFROST  
DISABLE

LOAD  
MANAGER

ENG BRK  
ON/OFF

ENG BRK  
HI/MED/LO

SIREN  
HORN

PERIMETER  
LIGHTS

MIRROR  
HEAT

Pierce

AUTO

CAUTION





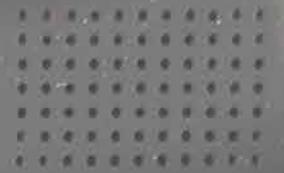
POWER



CH-

MENU

SEL



SIREN  
BRAKE

DEFROST  
DISABLE

LOAD  
MANAGER







ENG BRK ON/OFF      ENG BRK HI/MED/LO      SIREN HORN      PERIMETER LIGHTS      MIRROR HEAT



NR  
OR, S



Pierce

AUTO

88



MIRROR  
HEAT

WARNING

51032

Pierce

AUTO

8.8



ST  
LE  
LOAD  
MANAGER



EMERGENCY MASTER  
ROOF LIGHT  
FRONT WARNING  
SIDE WARNING  
LOWER REAR WARNING  
UPPER REAR WARNING

HIGH BEAM FLASH  
OPTION  
FLUID FLD  
BRAKE LAMP  
HORN  
RAMP LAMP

00  
00



**EMERGENCY  
MASTER**

**ROOF  
LIGHT**

**FRONT  
WARNING**

**SIDE  
WARNING**

**LOWER  
REAR  
WARNING**

**UPPER  
REAR  
WARNING**

HIGH  
BEAM  
FLASH

OPTICOM

FRONT  
FLOOD

DRIVERS  
SCENE

PASS  
SCENE

REAR  
SCENE



AIR  
HORN

CYCLE

OFF  
MANUAL  
WAIL  
TONE 1  
TONE 2

VOLUME

BRAKE

RADIO

 FEDERAL SIGNAL



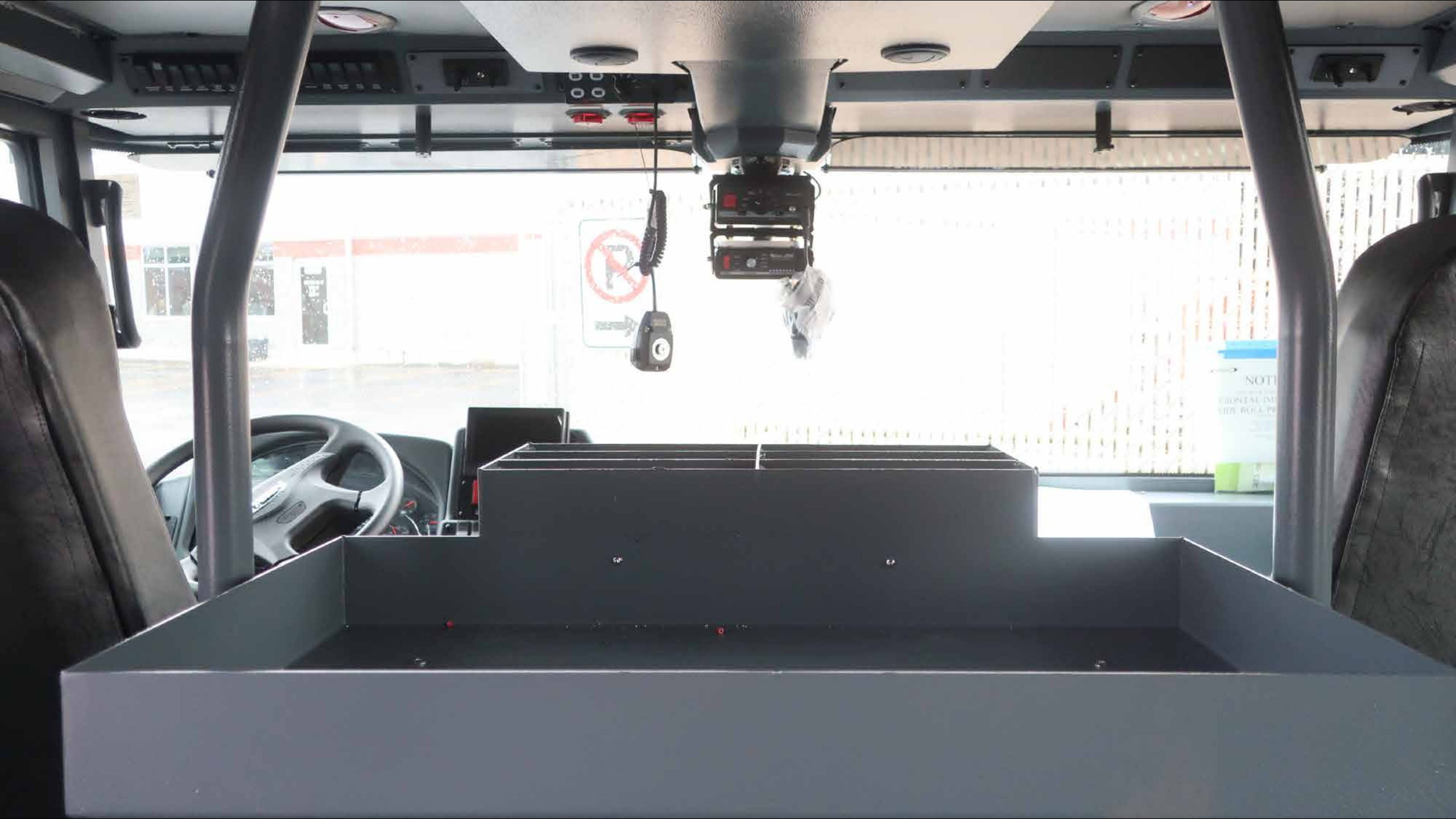










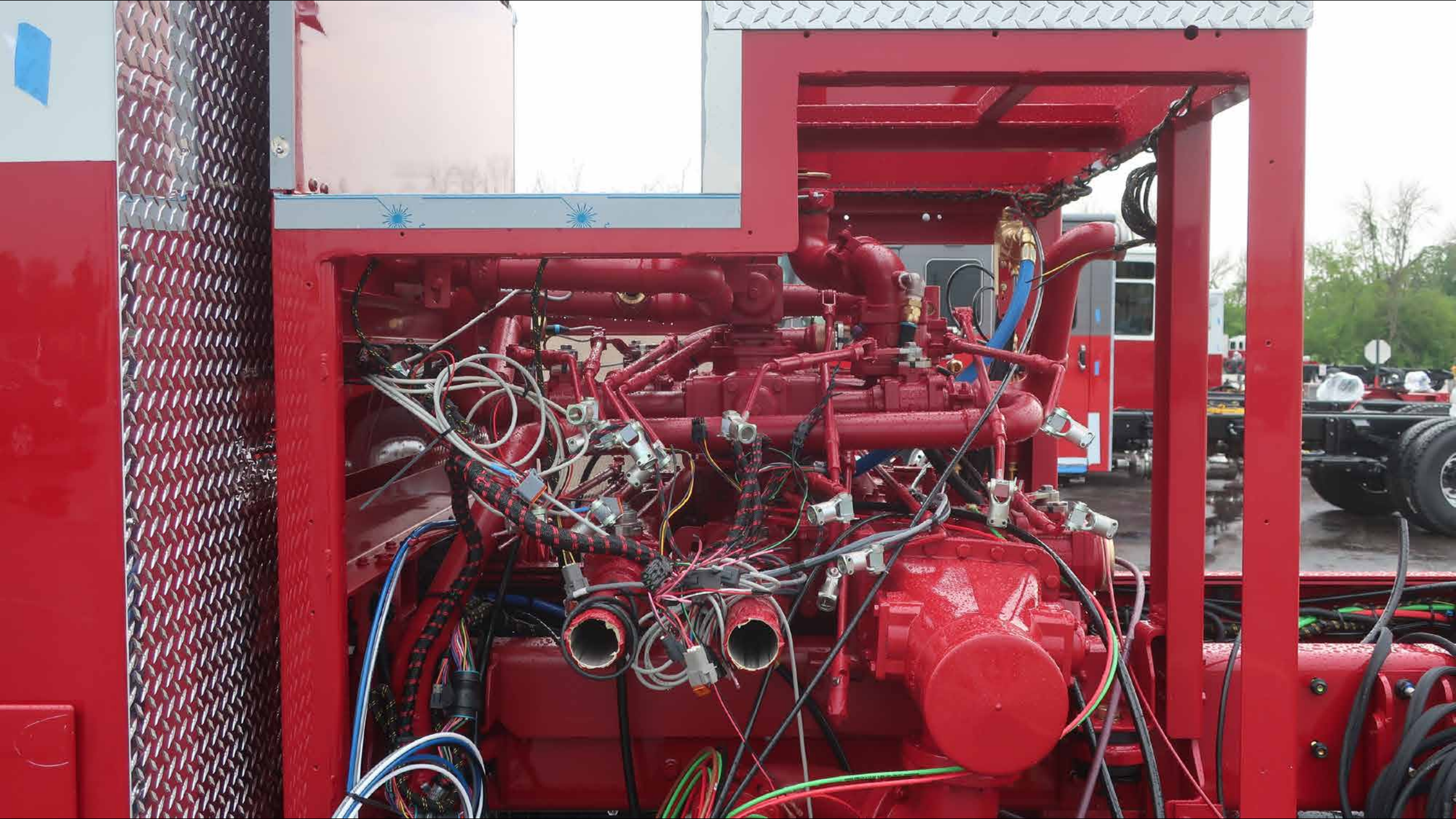


















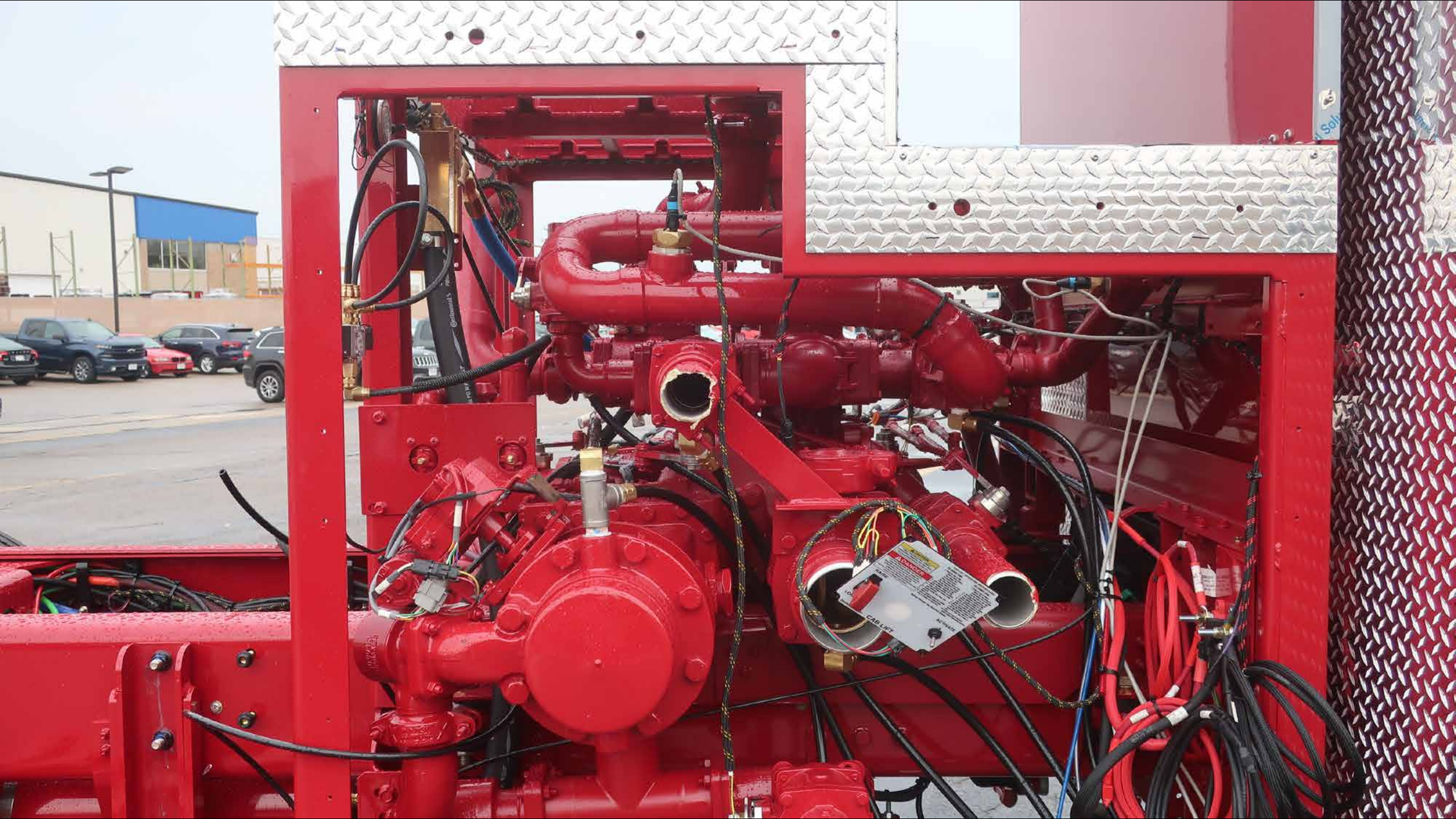
38183 2

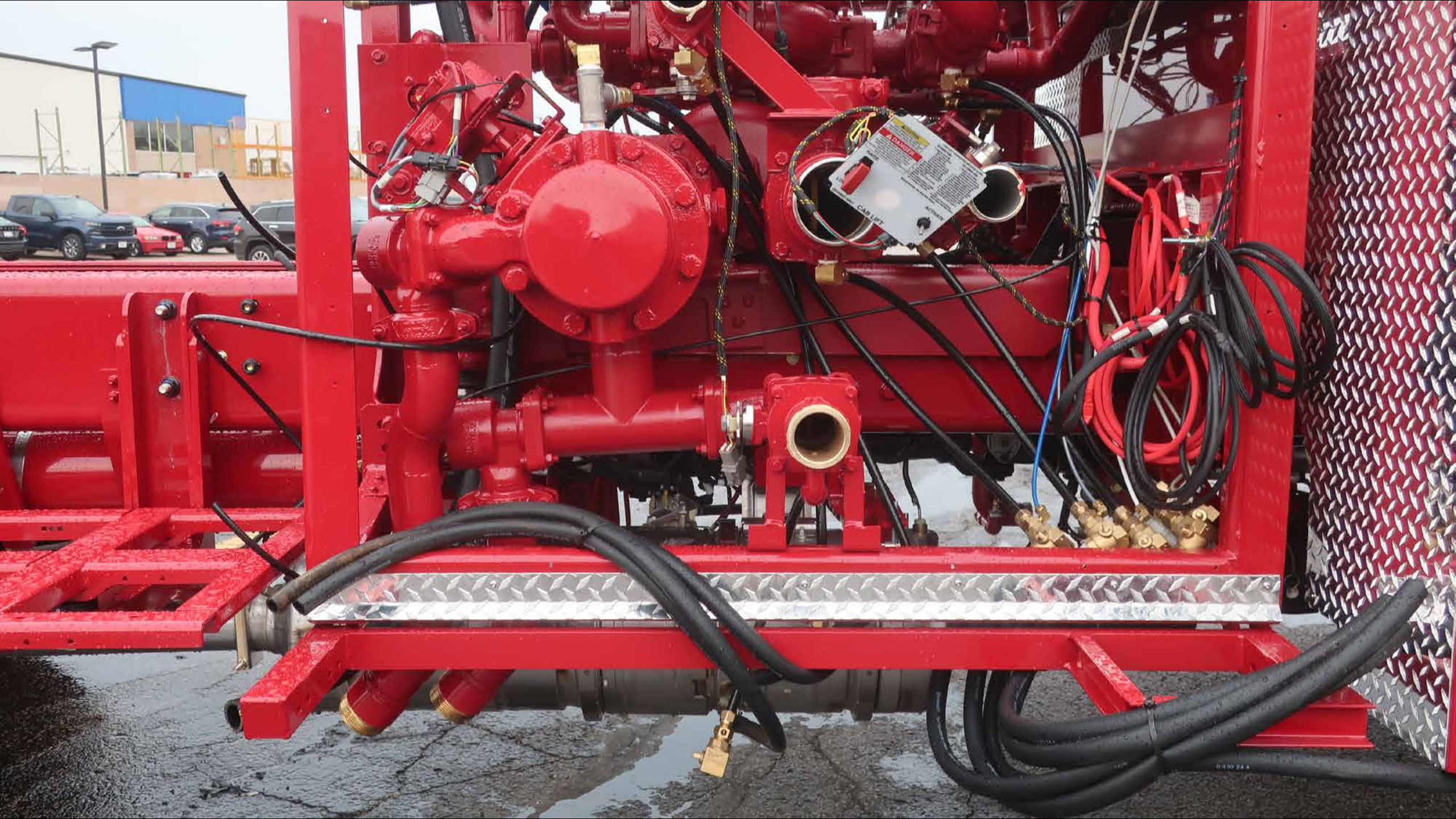
































AIR HORN



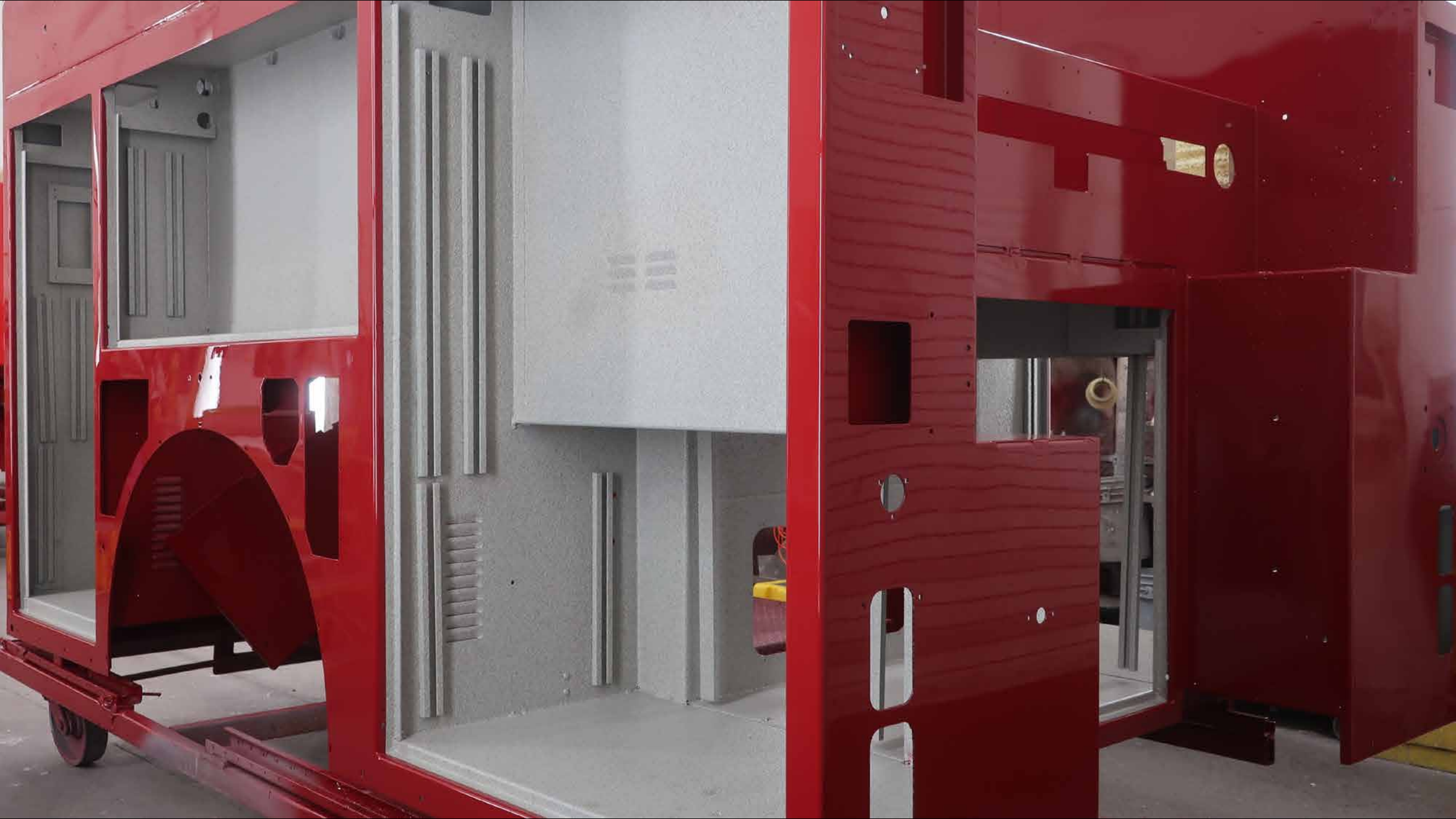
ELECTRONIC  
SIREN

















38/83  
024



**HUGHES FIRE EQUIPMENT**