

Photo Album for Pierce Job 38183-02 Tucson Fire Department, AZ Custom Enforcer Pumper

Wk 7 Production ending May 31, 2024

- The pumper continues assembly at the 41 plant.
- The body has completed the paint process and has begun assembly at the 41 plant.





331823

331823 2









38183-2

Pierce



SEAT BELT REQUIRED
LIMITED BACKING

White paper document with illegible text, possibly a manual or checklist.











APPOINTMENT

Peters



POWER OFF ON MENU TEL



SIREN BRAKE

DEFROST DISABLE

LOAD MANAGER



ENG BRK ON/OFF

ENG BRK HI/MED/LO

SIREN HORN

PERIMETER LIGHTS

MIRROR HEAT



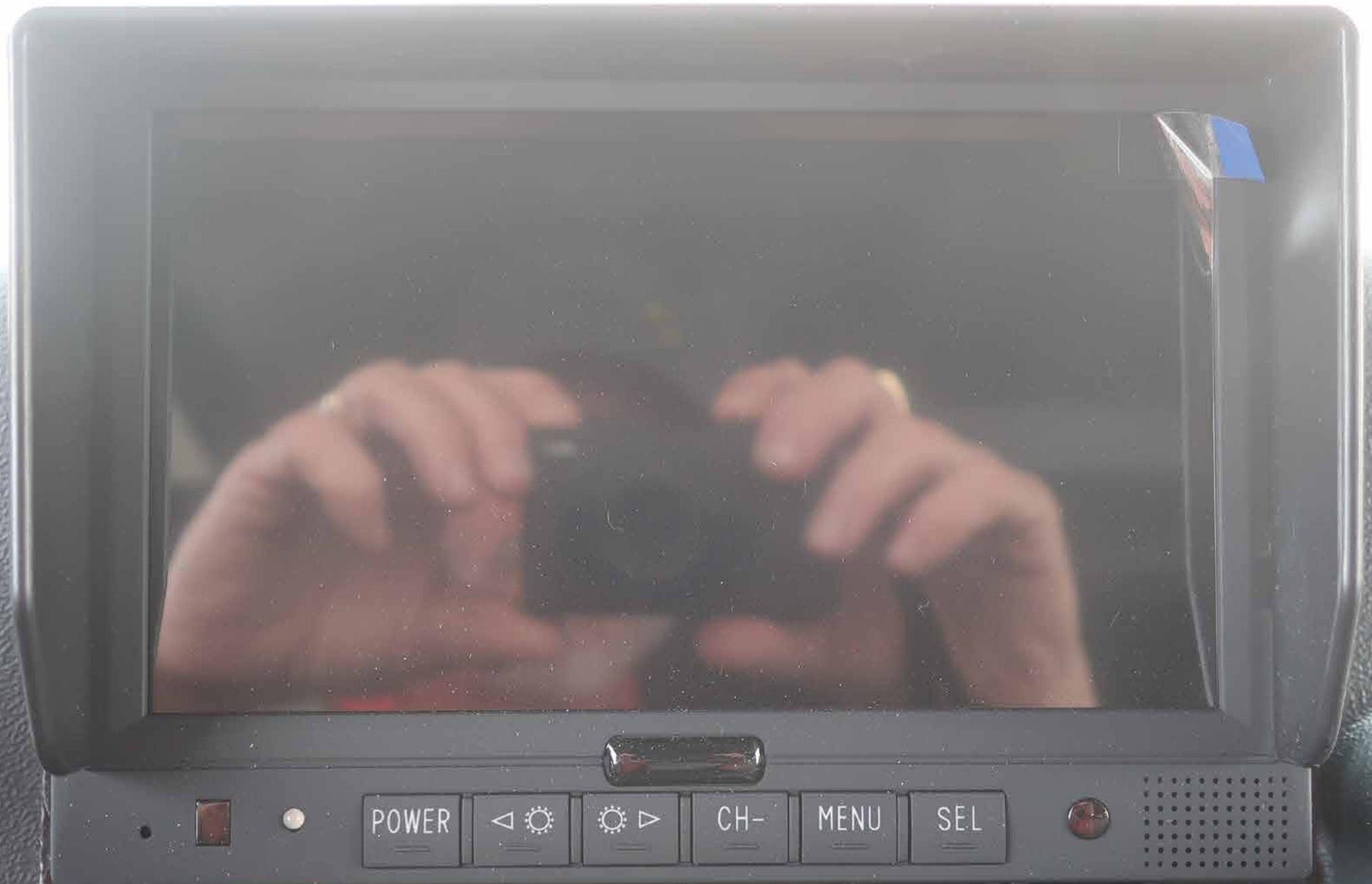
AUTO

88



PULL TO APPLY
SYSTEM
PARK
BRAKE
PUSH TO RELEASE

- ROAD TO PUMP
1. STOP TRUCK
 2. SHIFTRUCK TRANSMISSION TO NEUTRAL
 3. SET PARKING BRAKE
 4. THROTTLE LEVER DOWN
 5. ENGAGE TRUCK TRANSMISSION INTO DRIVE
- PUMP RELEASED OK TO PUMP



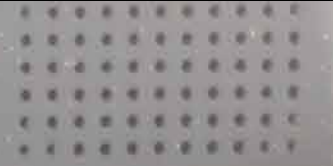
POWER



CH-

MENU

SEL



SIREN
BRAKE

DEFROST
DISABLE

LOAD
MANAGER

ENG BRK
ON/OFF

ENG BRK
HI/MED/LO

SIREN
HORN

PERIMETER
LIGHTS

MIRROR
HEAT

© Allison



POWER 40 0 P ON MW 54

SIREN BRAKE

DEFROST DISABLE

LOAD MANAGER

ENG BRK OFF

ENG BRK HI/MED/LO

SIREN HORN

PERIMETER LIGHTS

MIRROR HEAT

PULL TO APPLY
SYSTEM PARK
HALDEX
PUSH TO RELEASE

CAUTION
DO NOT OPERATE
VEHICLE WITH
THIS SWITCH
PULLED OUT

Pierce

AUTO 88

FAN SPEED

DEFROST

WIPERS

MODE

R

N

D

Pierce

AUTO

8.8



FROST
TABLE

LOAD
MANAGE

WETTED BY
PIERCE

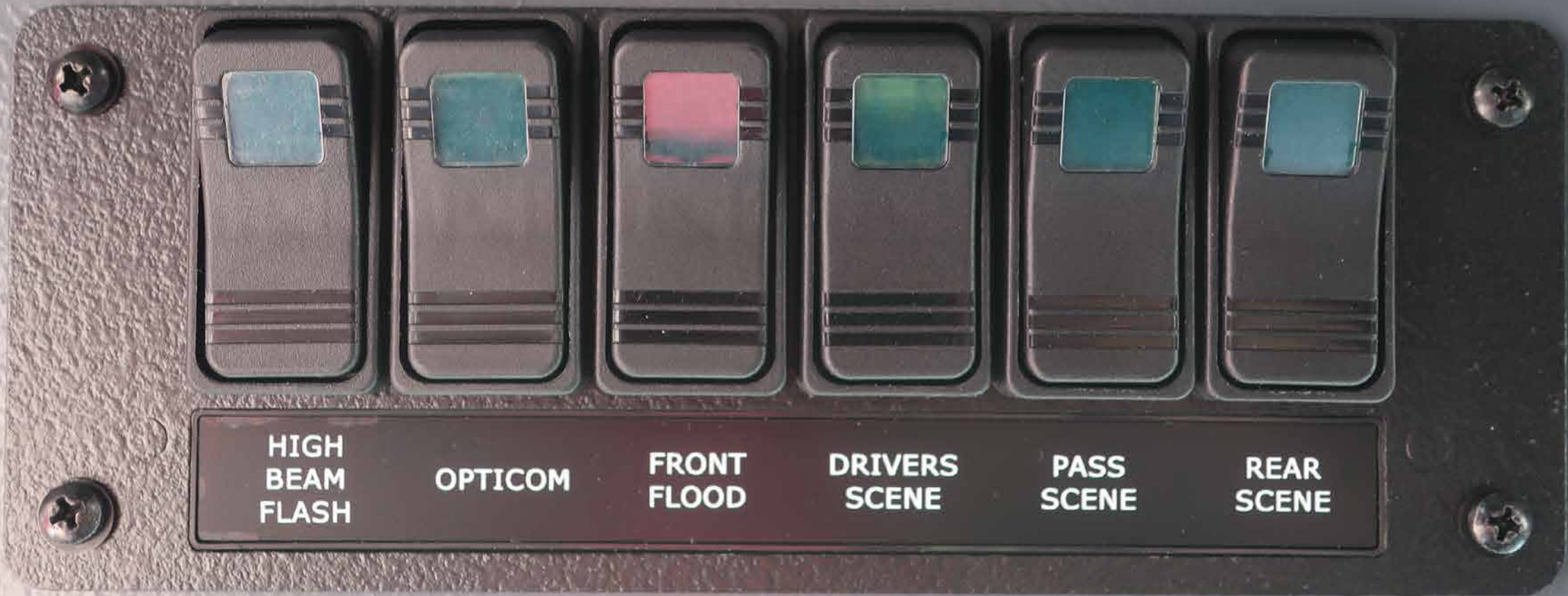
EMERGENCY MASTER ROOF LIGHT FRONT WARNING SIDE WARNING LOWER REAR WARNING UPPER REAR WARNING

HIGH BEAM FLASH OPTICOM FRONT FLOOD DRIVERS SCENE PASS SCENE REAR SCENE

00
00



**EMERGENCY
MASTER** **ROOF
LIGHT** **FRONT
WARNING** **SIDE
WARNING** **LOWER
REAR
WARNING** **UPPER
REAR
WARNING**



HIGH
BEAM
FLASH

OPTICOM

FRONT
FLOOD

DRIVERS
SCENE

PASS
SCENE

REAR
SCENE



MAGNETRON

AIR
HORN

CYCLE

OFF
MANUAL
WAIL
TONE 1
TONE 2

VOLUME

BRAKE

RADIO

 FEDERAL SIGNAL

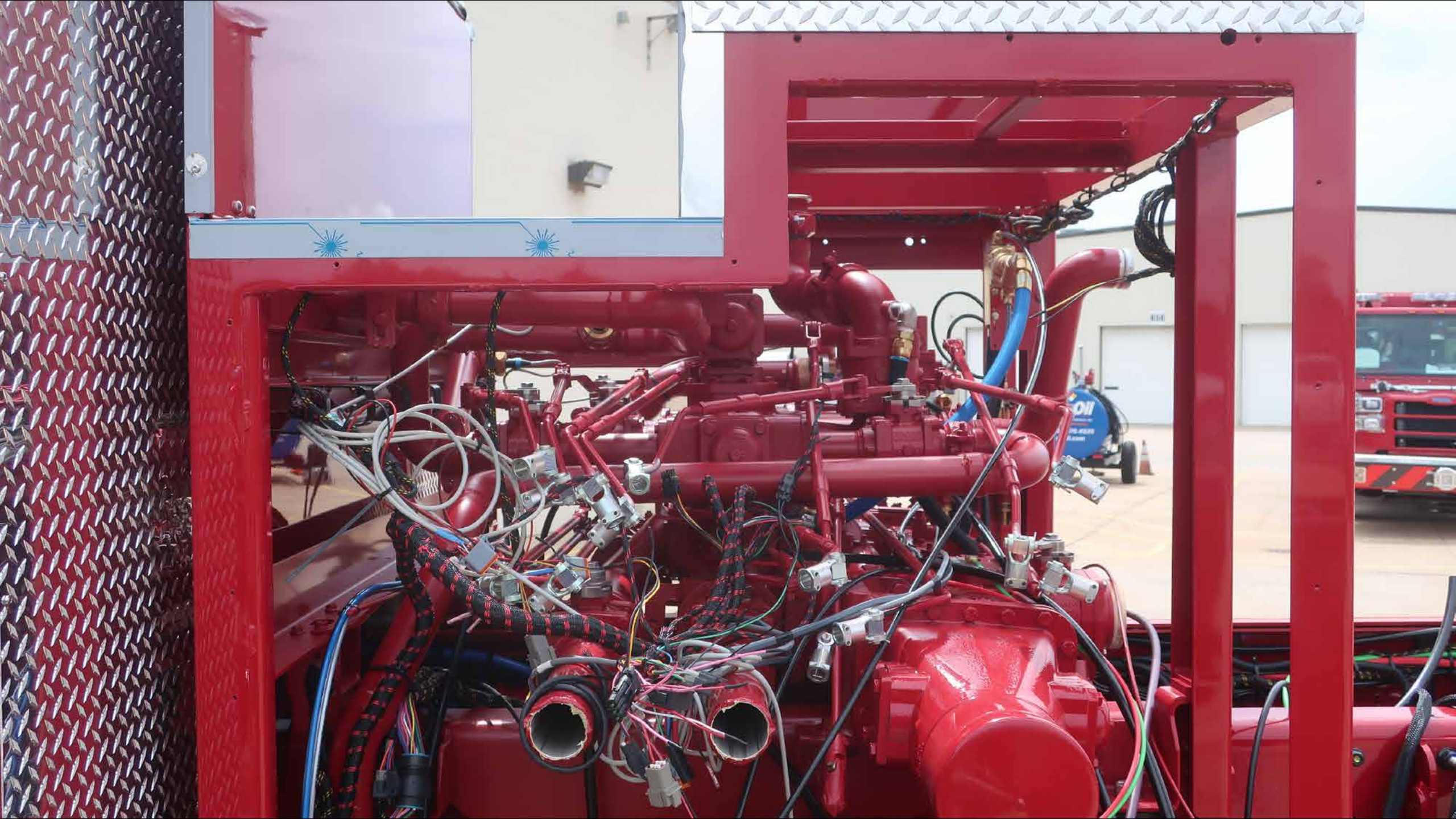


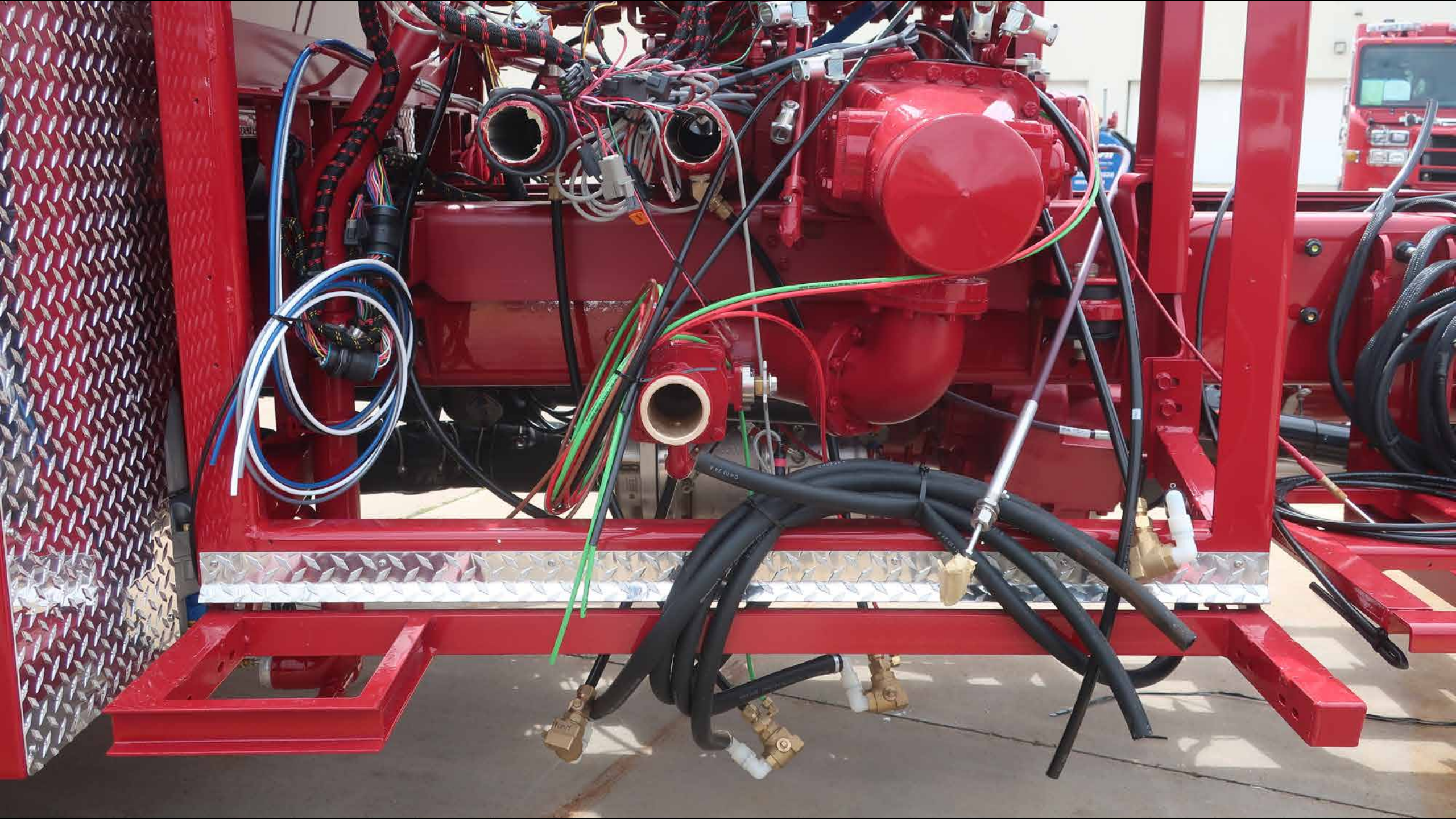


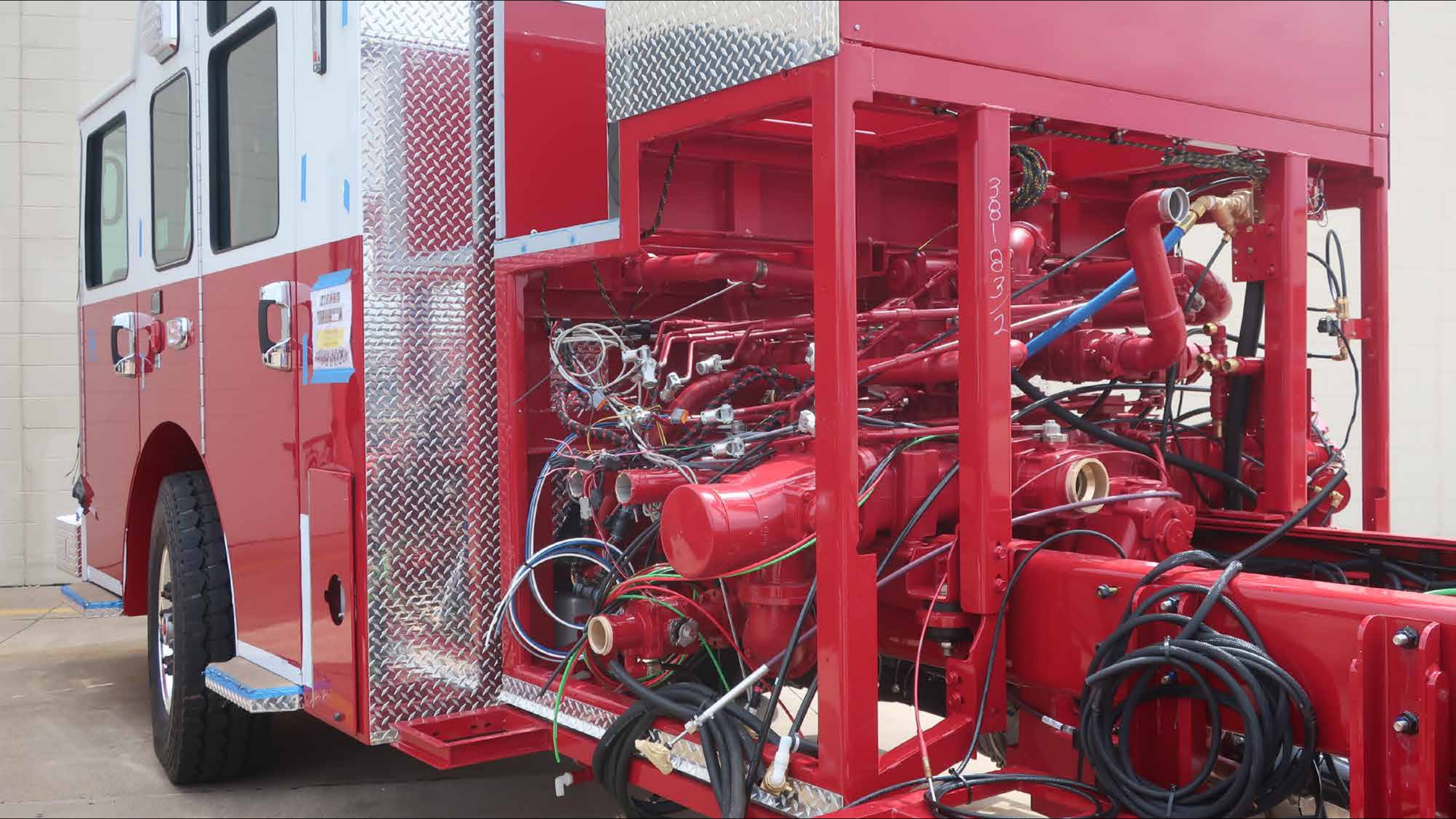






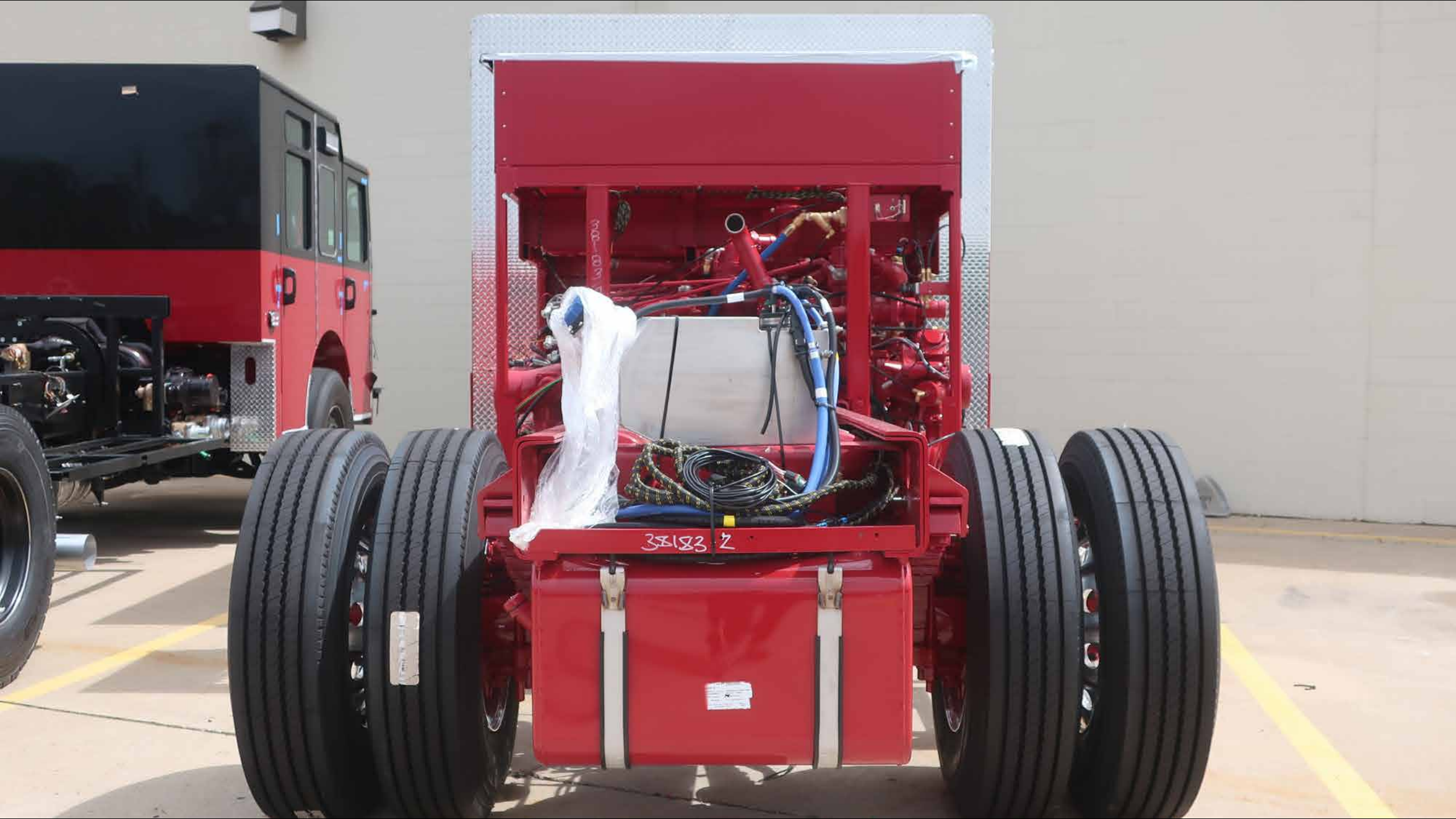






11/300-000



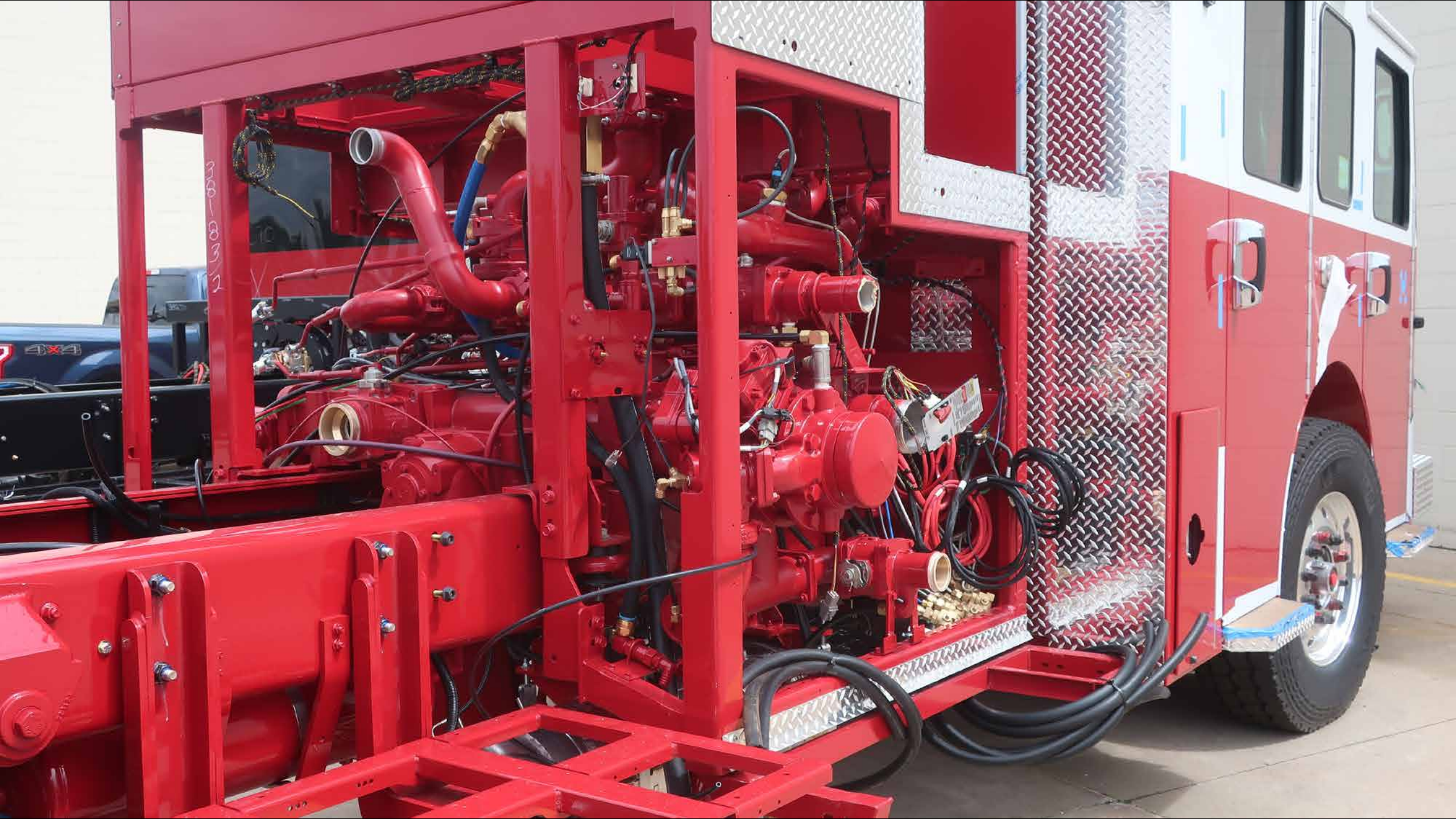


38183 Z

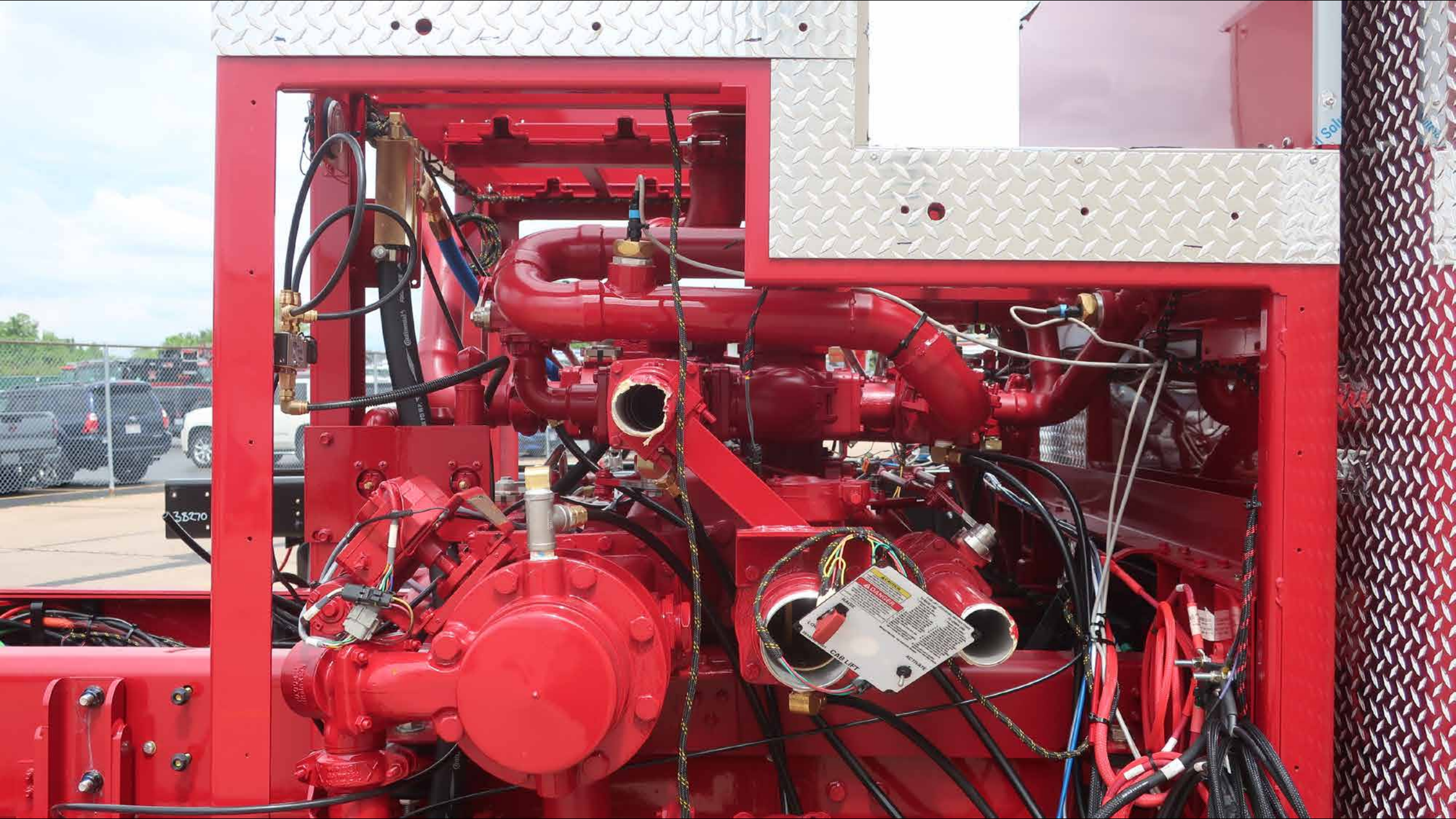


11/6/00-0000

DEPT
23

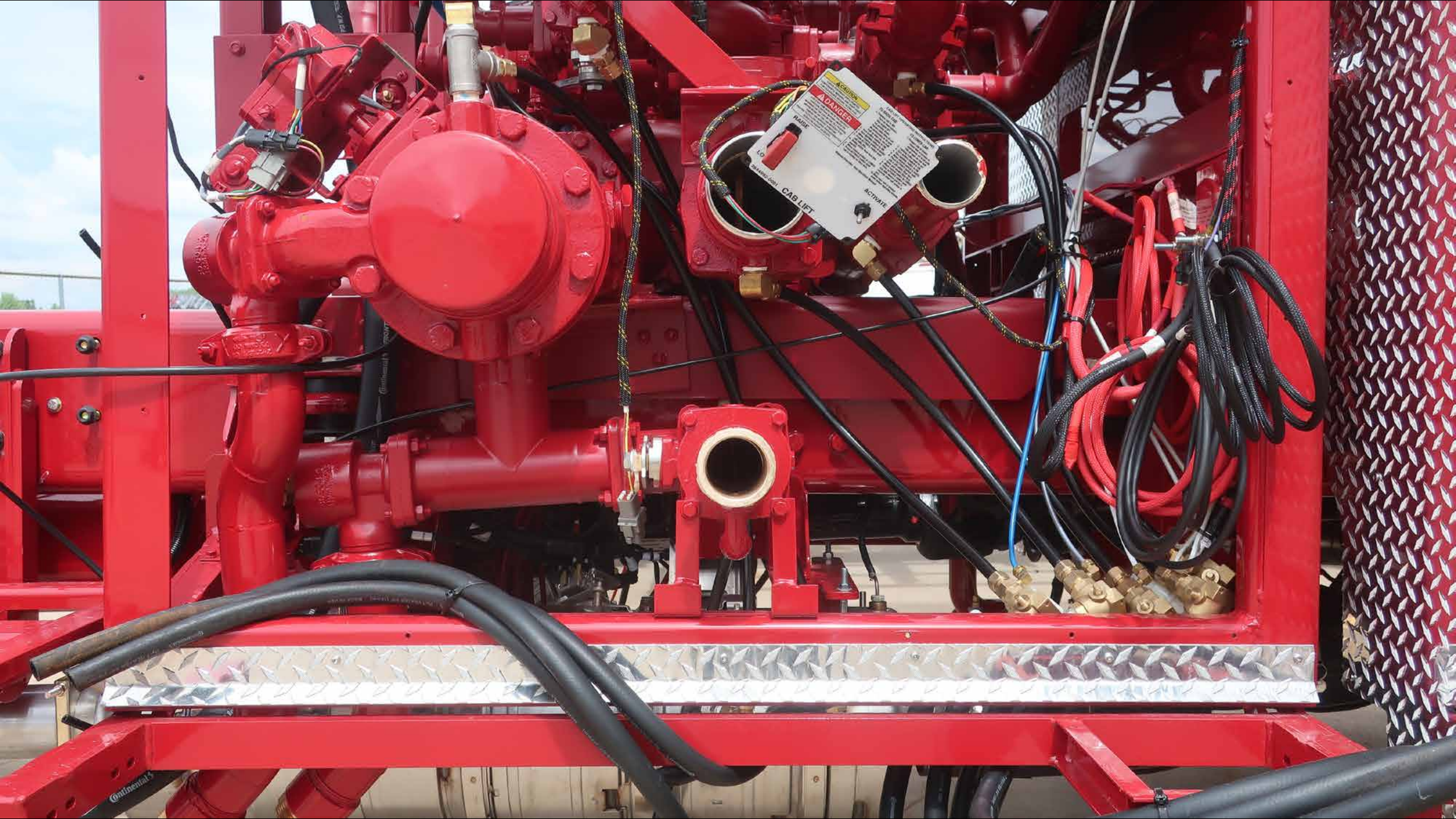






38270

DANGER
CAUTION
CAB LIGHT
ACTIVATE



















SIFEN BRAKE

AIR HORN

ELECTRONIC SIFEN BRAKE



ATTENTION
COMPATIBILIDAD



AIR HORN



ELECTRONIC
SIREN



SIREN BRAKE

Dual Port USB



INPUT
12 24V DC

Dual Port USB



INPUT
12 24V DC



QC3.0

QC4.0

PARK KE

QC3.0

QC4.0





GOLIGHT[®]





29183-2













HUGHES FIRE EQUIPMENT