

# Photo Album for Pierce Job 38183-02 Tucson Fire Department, AZ Custom Enforcer Pumper

Wk 8 Production ending June 7, 2024

- The body has been mounted to the chassis and the pumper continues assembly at the 41 plant.



38183-2

CASS

STEEL

6

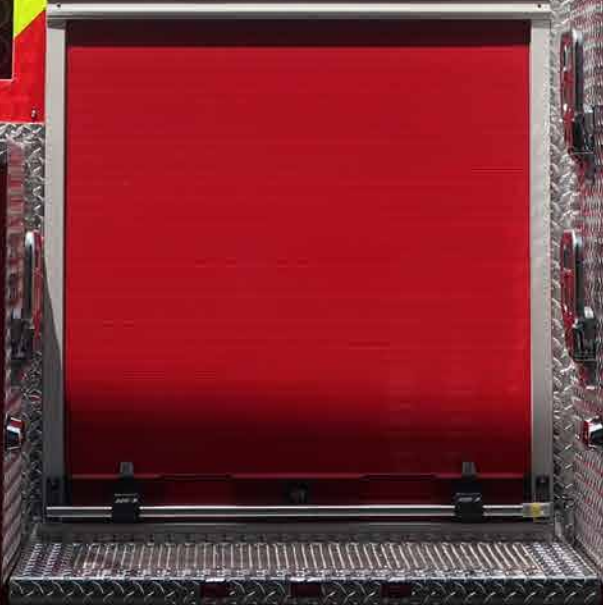


625

38183-2

621





ALUMINUM

BRASS

STEEL

CAR



621

615

38183-2









38183-2

Pierce  
911







Peterbilt

The instrument cluster features several gauges: a large RPM gauge (0-25 x100), a large MPH gauge (0-85), a DEF gauge (1/4 to 3/4), a WATER gauge (140-260 F), an OIL gauge (0-100 PSI), a FUEL gauge (1/4 to 3/4), a VOLTS gauge (10-16), and two AIR pressure gauges (0-150 PSI for FRONT and REAR AIR). A central digital display is present but blank.

ULTRA LOW SULFUR DIESEL FUEL ONLY

A vertical stack of control buttons on the left side of the dashboard, including a red START button, an E-M button, and a WIPER button.

A row of control buttons below the dashboard, including an E-M button, an OFF button, and a PANEL button.

A row of control buttons on the right side of the dashboard, including a HI IDLE button and an OK-HI IDLE button.

A control panel at the bottom right of the dashboard featuring a yellow knob and several indicator lights.



WARNING

POWER OK CR MENU SEL

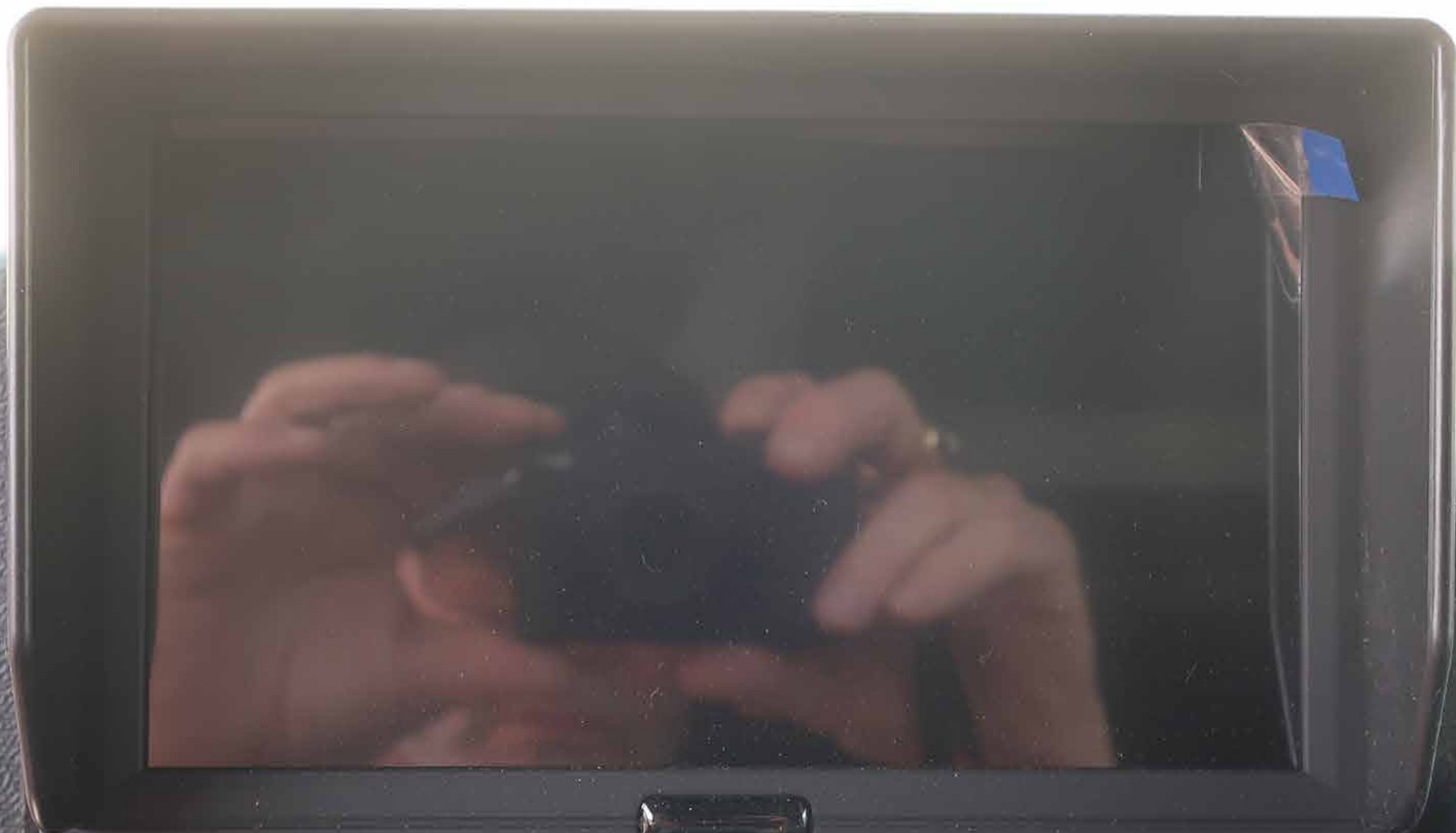
SIREN BRAKE DEFROST DISABLE LOAD MANAGER

ENG BRK ON/OFF ENG BRK HI/MED/LO SIREN HORN PERIMETER LIGHTS MIRROR HEAT

PULL TO ONLY SYSTEM PARK HOLD RELEASE

R MODE N D

ROAD TO FLUKE  
1. STOP TRUCK  
2. SHUT OFF TRANSMISSION  
3. SET PARKING BRAKE  
4. SHOWN LEVER DOWN  
5. ENGAGE TRUCK TRANSMISSION  
PUMP (PUMP) OK TO PUMP



POWER ◀ ☀ ☀ ▶ CH- MENU SEL



POWER



CH-

MENU

SEL



SIREN  
BRAKE



DEFROST  
DISABLE



LOAD  
MANAGER





ENG BRK  
ON/OFF

ENG BRK  
HI/MED/LO

SIREN  
HORN

PERIMETER  
LIGHTS

MIRROR  
HEAT

 Allison



Pierce

88

AUTO

MDT

MODEL N/A SERIAL N/A  
DATE N/A  
TIME N/A  
USER N/A  
LOCATION N/A  
STATUS N/A  
1-800-393-3900  
N/A

W0818

AD  
AGER

MIRROR  
HEAT





EMERGENCY MASTER      ROOF LIGHT      FRONT WARNING      SIDE WARNING      LOWER REAR WARNING      UPPER REAR WARNING

HIGH  
BEAM  
FLASH

OPTICOM

FRONT  
FLOOD

DRIVERS  
SCENE

PASS  
SCENE

REAR  
SCENE

BRITISH LIGHT



AIR  
HORN

CYCLE

OFF  
MANUAL  
WAIL  
TONE 1  
TONE 2

VOLUME

BRAKE

RADIO

 FEDERAL SIGNAL

— TONE 2















NOTICE  
FRONTAL IMPACT BUMP  
SIDE POLE PROTECTION

Pierce

Q2R





Handbook of Fire  
Department  
Maintenance

BRASS









A rectangular control panel for the pump, featuring a digital display showing "RPM" and "STOP" buttons. It includes a large red emergency stop button and various indicator lights.

A vertical panel of control buttons for various lights and horns, including "DR TO REAR", "DRIVER SIDE SCENE LIGHTS", "PASSENGER SIDE SCENE LIGHTS", "REAR SCENE LIGHTS", "REEL REWIND", and "AIR HORN".



A control for the intake relief valve, featuring a gauge and a knob. Text includes "INTAKE RELIEF VALVE", "PULL KNOB OUT TO ADJUST", "TURN TO CHANGE SET PRESSURE", "PUSH KNOB IN TO LOCK", and "TRIDENT".



A control panel labeled "PASSENGER MAIN FLEET" with a digital display and several buttons.



A control panel labeled "PRIMER FIRE PUMP" with a knob and text: "TRIDENT AIR PUMP", "PUSH TO PRIME".

ALL RESTRICTIONS  
See Manual for details  
Manufacturer's Instructions at  
www.trident.com



PANEL LIGHTS



**PUMPBOSS**

CHECK ENGINE STOP ENGINE

**3888**

**RPM**

**STOP!**  
THE PRESSURE SENSOR CALIBRATION  
MAY NEED TO BE PERFORMED  
DURING INITIAL INSTALLATION AS  
REFERENCED IN THE OPERATING  
MANUAL.

MEASURE PRESSURE

THROTTLE READY

PRESET

101

OK TO PUMP

DRIVER SIDE SCENE LIGHTS

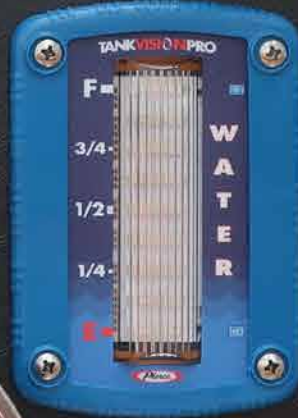
PASSENGER SIDE SCENE LIGHTS

REAR SCENE LIGHTS

REEL REWIND

AIR HORN





ING INSTRUCTIONS  
FOR ENHANCED PRIMING  
PERFORMANCE FLY ENGINE AT 1000  
RPM WHILE PRIMING

**INTAKE RELIEF VALVE**

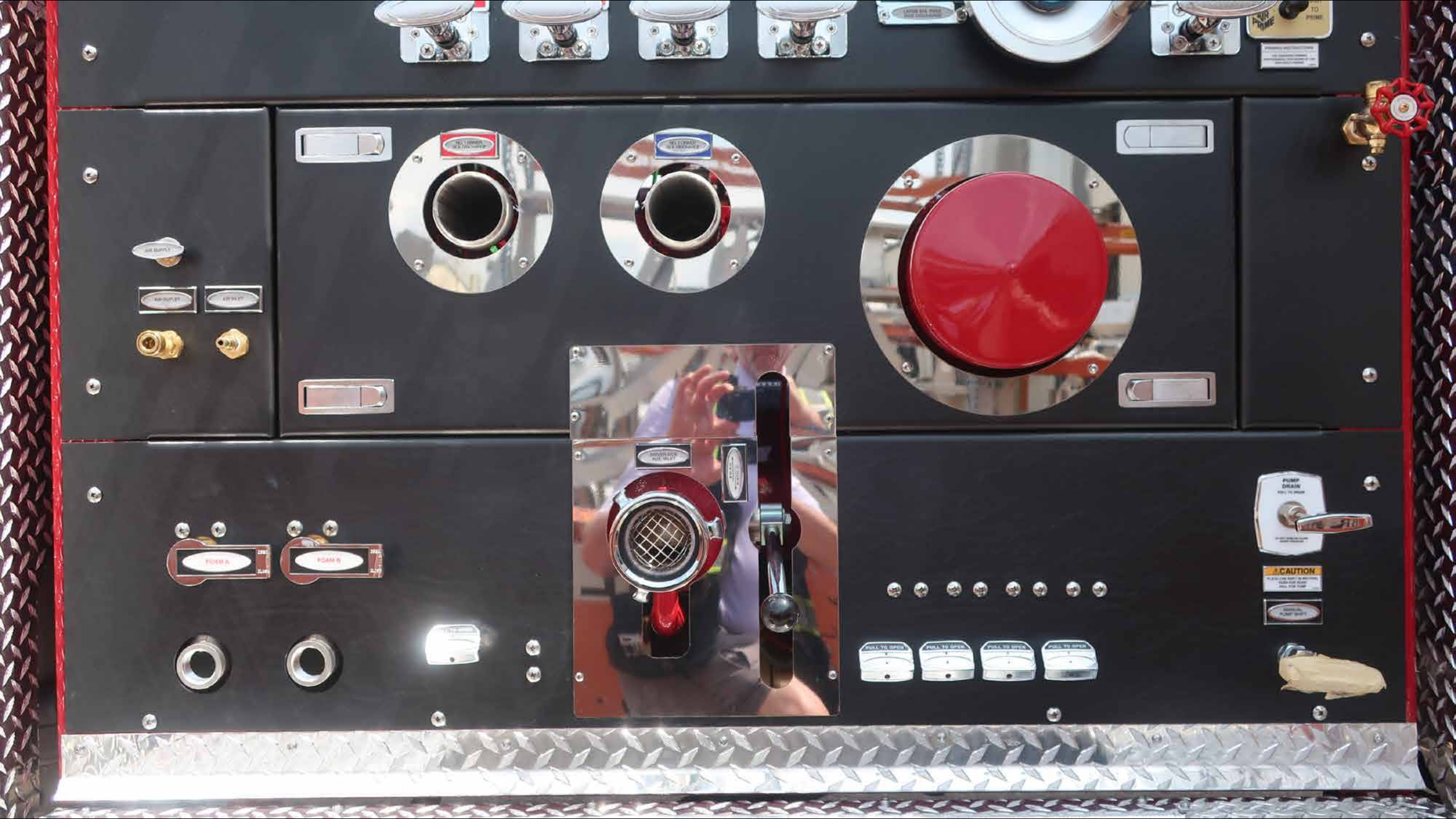
- PULL KNOB OUT TO ADJUST.
- TURN TO CHANGE SET PRESSURE.
- PUSH KNOB IN TO LOCK.

PULL TO UNLOCK

**TRIDENT**

This block contains a Trident Intake Relief Valve gauge and its adjustment knob. The gauge is circular with a white face and a needle, mounted on a black rectangular plate. Below the gauge is a black adjustment knob with a yellow label that says "PULL TO UNLOCK". The Trident logo is at the bottom of the plate.







NO. 1 DRIVER  
SIDE DISCHARGE

NO. 2 DRIVER  
SIDE DISCHARGE







PLACE CAB SHIFT IN NEUTRAL  
PUSH FOR ROAD  
PULL FOR PUMP











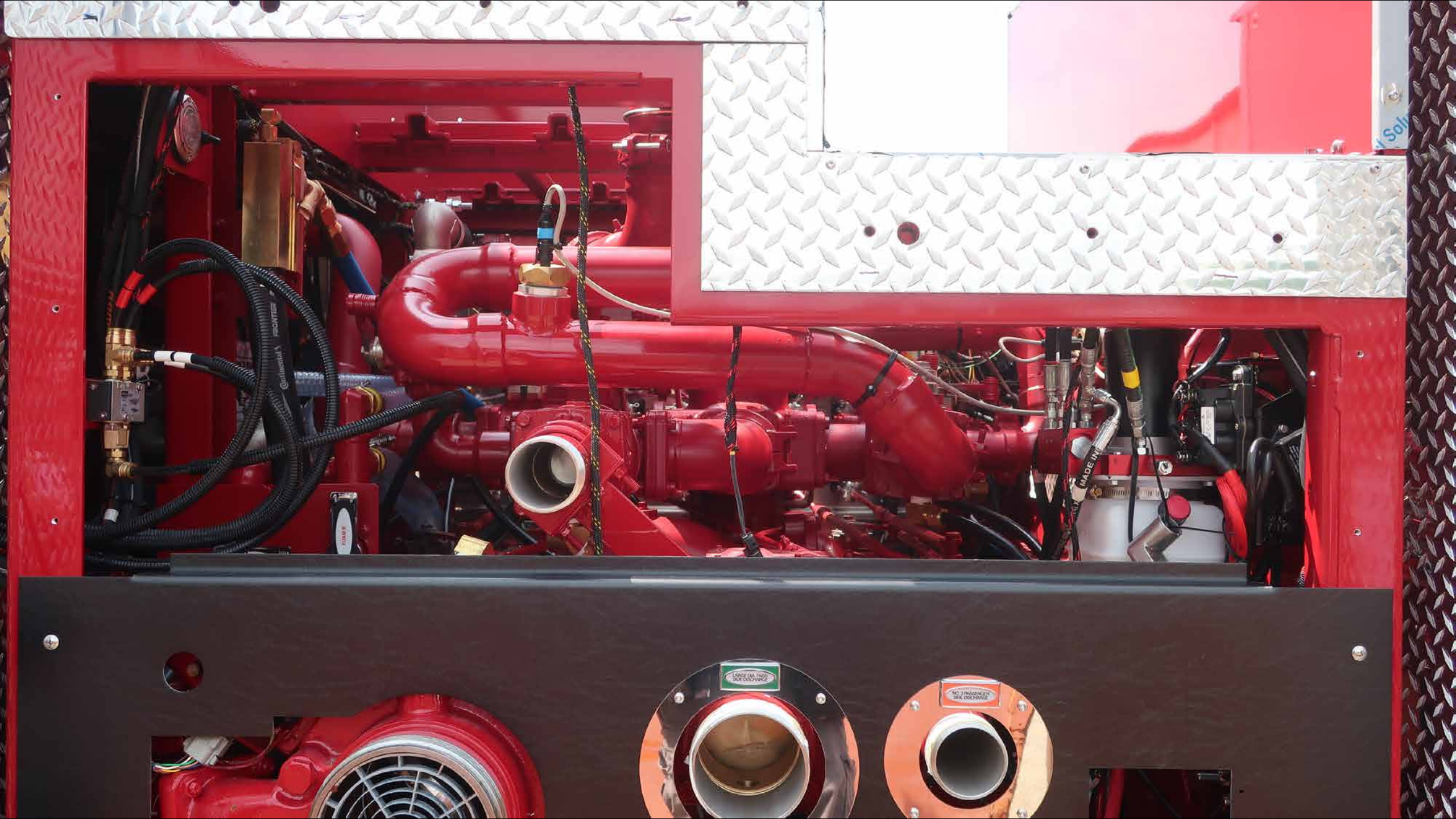


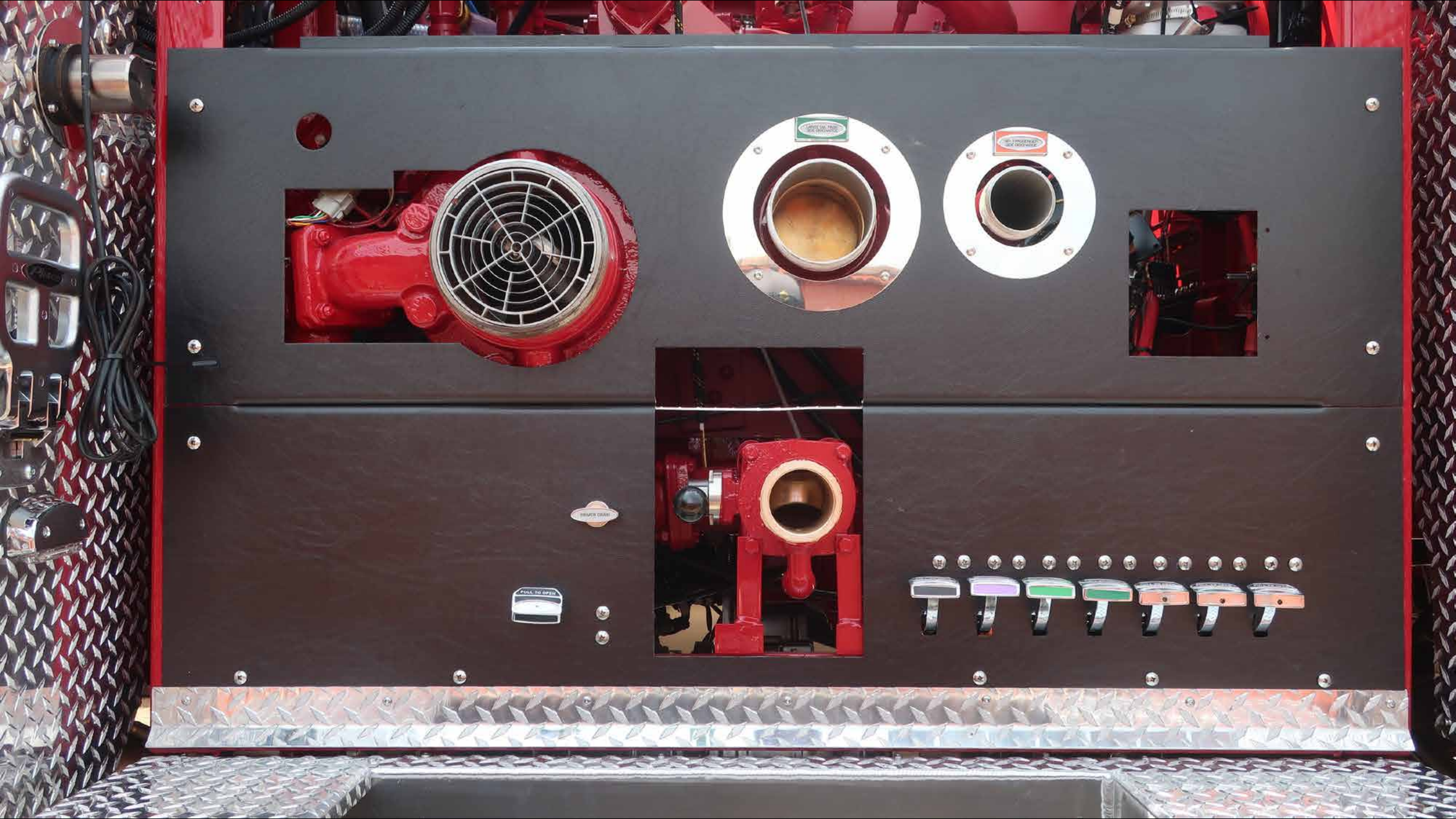
ASY. PLANT  
PUMPE  
PARTS  
Bulle #1

4  
147  
107













PULL TO OPEN

PULL TO OPEN

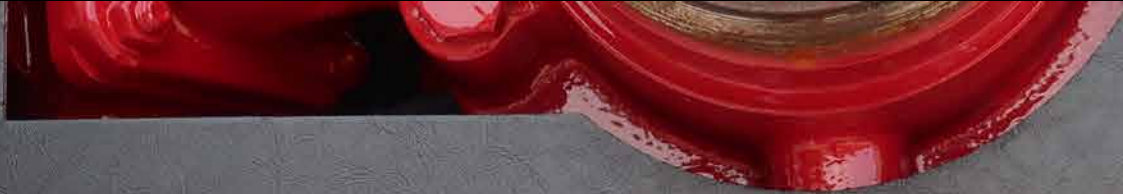
PULL TO OPEN

PULL TO OPEN

PULL TO OPEN

PULL TO OPEN

PULL TO OPEN



PRIMER DRAIN

PULL TO OPEN































LINDHOLM



**HUGHES FIRE EQUIPMENT**