

Photo Album for Pierce Job 38183-03 Tucson Fire Department, AZ Custom Enforcer Pumper

Wk 1 Production ending April 26, 2024

- The production of your new Pierce Custom Enforcer Pumper has begun.
- The cab has begun weld operations at the IPP plant.
- The pump has arrived and is in staging to begin assembly at the IPP plant.



S-5 HC

FLAMMABLE
KEEP FIRE AWAY

CAB WELD

2610492-03



Miller

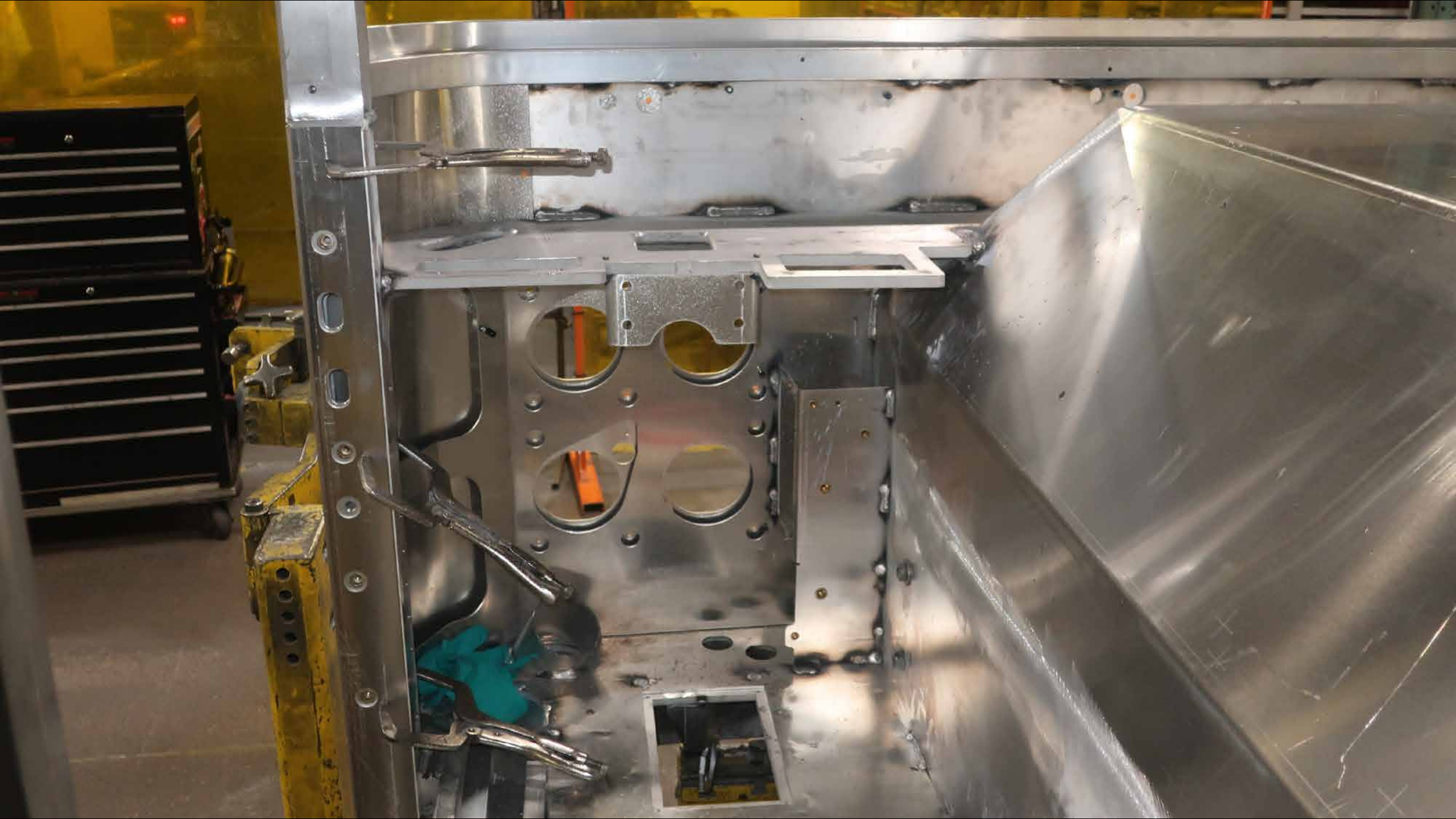
Miller
DEPT 12 FAB CAB













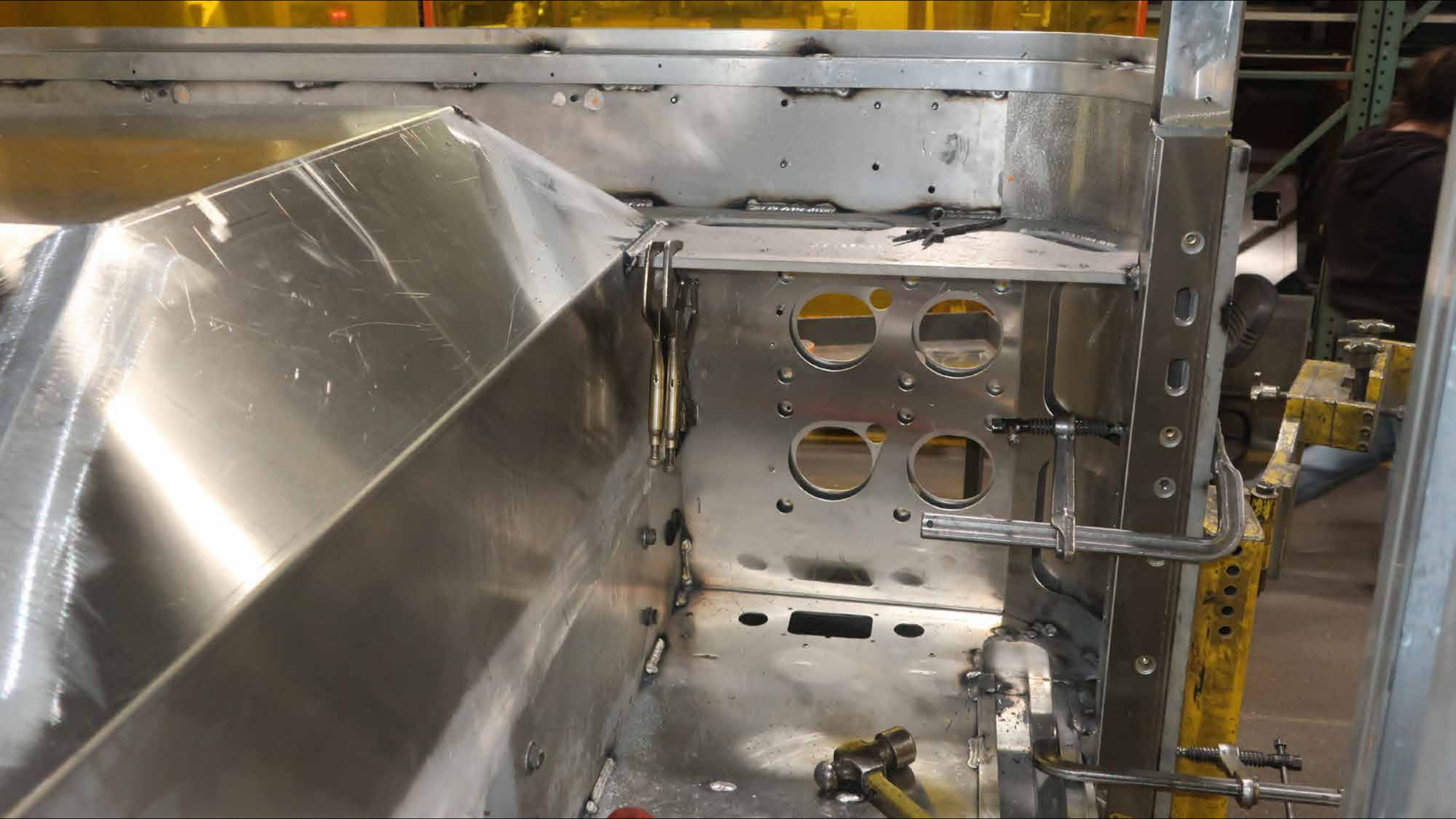
W01 38



SEKEEPING

3013

FIRE
EXIT
3000-0000





38245wp-07

38183wp-03

RE-EQUIP IDENTIFICATION
PUMP
38183WP





US
18304
HT

WALSH
18304
HT



38183 WP-03

38245 WP

Barcode label with text: 38183 WP-03

MADE IN USA

BLACK

WATEROUS

MODEL:CSU DATE:MAR-2024

SERIAL NO:182329

CAPACITY:1250 GPM AT 150 PSIG

HYDRO:600 PSIG MAX:400 PSIG



HUGHES FIRE EQUIPMENT