

# Photo Album for Pierce Job 38205-01 Capital City Fire and Rescue, AK Custom Arrow XT PUC Pumper

## Wk 6 Production ending June 21, 2024

- The cab has completed the paint process and has begun assembly at the Neenah plant.
- The chassis continues assembly at the Neenah plant.
- The body continues weld operations at the IPP plant.







Novacel Solution  
LASER Fiber & CO.

38205-1





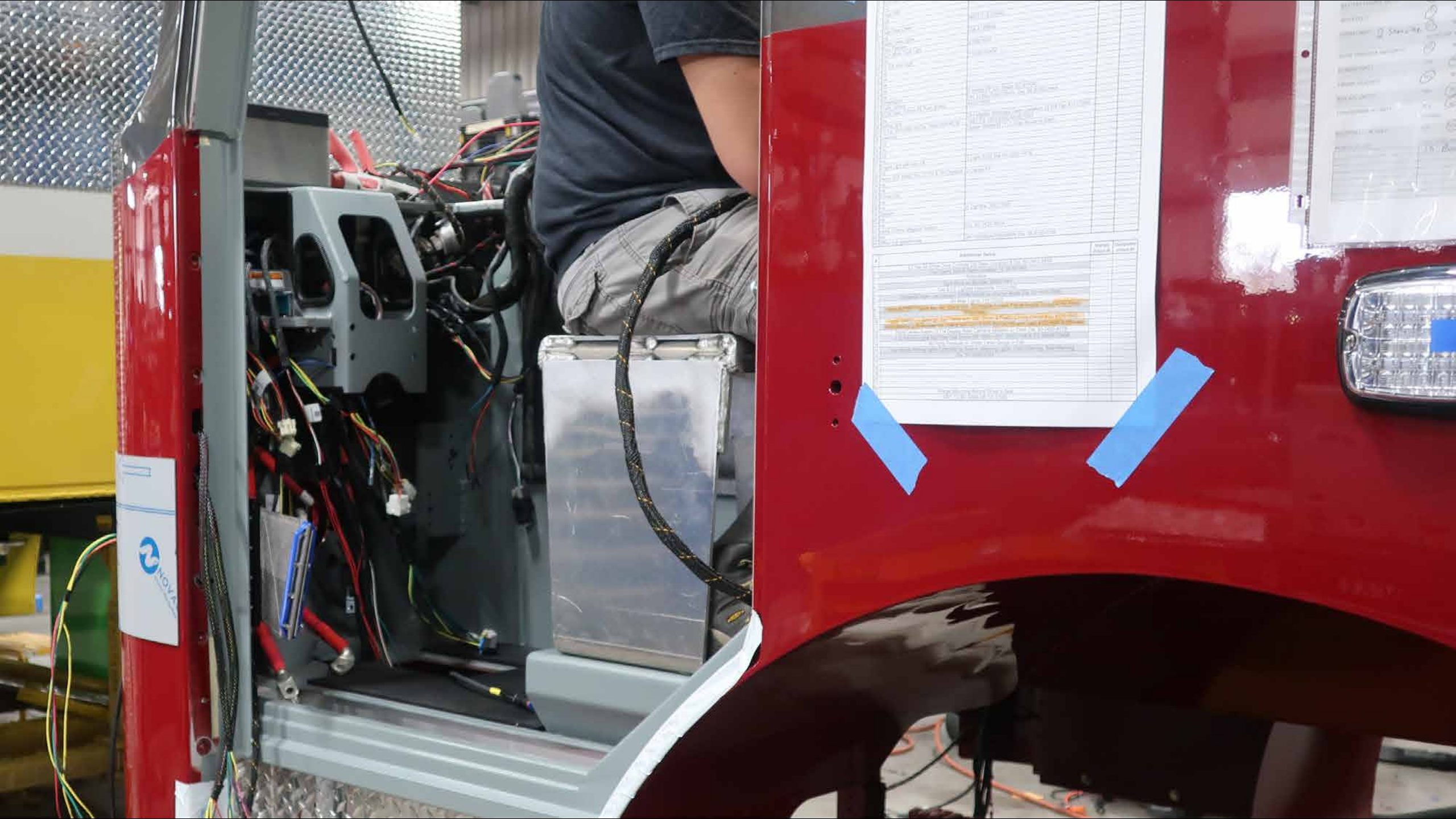


Two white papers are taped to the red chassis with blue tape. The papers contain technical information, likely related to the vehicle's electrical system or battery specifications.

A red rectangular control panel is mounted on the upper right side of the chassis. It features a black arrow-shaped indicator and a small label to its right.

A blue rectangular control panel is mounted on the middle right side of the chassis. It features a black arrow-shaped indicator and a small label to its right.

A digital display panel labeled "AUTO CHARGE" and "BATTERY MONITOR" is mounted on the lower right side of the chassis. It shows various indicators and a red button labeled "AIR EJECT".



Item	Quantity	Unit	Remarks
1	1	PCB	PCB BOARD
2	1	PCB	PCB BOARD
3	1	PCB	PCB BOARD
4	1	PCB	PCB BOARD
5	1	PCB	PCB BOARD
6	1	PCB	PCB BOARD
7	1	PCB	PCB BOARD
8	1	PCB	PCB BOARD
9	1	PCB	PCB BOARD
10	1	PCB	PCB BOARD
11	1	PCB	PCB BOARD
12	1	PCB	PCB BOARD
13	1	PCB	PCB BOARD
14	1	PCB	PCB BOARD
15	1	PCB	PCB BOARD
16	1	PCB	PCB BOARD
17	1	PCB	PCB BOARD
18	1	PCB	PCB BOARD
19	1	PCB	PCB BOARD
20	1	PCB	PCB BOARD
21	1	PCB	PCB BOARD
22	1	PCB	PCB BOARD
23	1	PCB	PCB BOARD
24	1	PCB	PCB BOARD
25	1	PCB	PCB BOARD
26	1	PCB	PCB BOARD
27	1	PCB	PCB BOARD
28	1	PCB	PCB BOARD
29	1	PCB	PCB BOARD
30	1	PCB	PCB BOARD
31	1	PCB	PCB BOARD
32	1	PCB	PCB BOARD
33	1	PCB	PCB BOARD
34	1	PCB	PCB BOARD
35	1	PCB	PCB BOARD
36	1	PCB	PCB BOARD
37	1	PCB	PCB BOARD
38	1	PCB	PCB BOARD
39	1	PCB	PCB BOARD
40	1	PCB	PCB BOARD
41	1	PCB	PCB BOARD
42	1	PCB	PCB BOARD
43	1	PCB	PCB BOARD
44	1	PCB	PCB BOARD
45	1	PCB	PCB BOARD
46	1	PCB	PCB BOARD
47	1	PCB	PCB BOARD
48	1	PCB	PCB BOARD
49	1	PCB	PCB BOARD
50	1	PCB	PCB BOARD
51	1	PCB	PCB BOARD
52	1	PCB	PCB BOARD
53	1	PCB	PCB BOARD
54	1	PCB	PCB BOARD
55	1	PCB	PCB BOARD
56	1	PCB	PCB BOARD
57	1	PCB	PCB BOARD
58	1	PCB	PCB BOARD
59	1	PCB	PCB BOARD
60	1	PCB	PCB BOARD
61	1	PCB	PCB BOARD
62	1	PCB	PCB BOARD
63	1	PCB	PCB BOARD
64	1	PCB	PCB BOARD
65	1	PCB	PCB BOARD
66	1	PCB	PCB BOARD
67	1	PCB	PCB BOARD
68	1	PCB	PCB BOARD
69	1	PCB	PCB BOARD
70	1	PCB	PCB BOARD
71	1	PCB	PCB BOARD
72	1	PCB	PCB BOARD
73	1	PCB	PCB BOARD
74	1	PCB	PCB BOARD
75	1	PCB	PCB BOARD
76	1	PCB	PCB BOARD
77	1	PCB	PCB BOARD
78	1	PCB	PCB BOARD
79	1	PCB	PCB BOARD
80	1	PCB	PCB BOARD
81	1	PCB	PCB BOARD
82	1	PCB	PCB BOARD
83	1	PCB	PCB BOARD
84	1	PCB	PCB BOARD
85	1	PCB	PCB BOARD
86	1	PCB	PCB BOARD
87	1	PCB	PCB BOARD
88	1	PCB	PCB BOARD
89	1	PCB	PCB BOARD
90	1	PCB	PCB BOARD
91	1	PCB	PCB BOARD
92	1	PCB	PCB BOARD
93	1	PCB	PCB BOARD
94	1	PCB	PCB BOARD
95	1	PCB	PCB BOARD
96	1	PCB	PCB BOARD
97	1	PCB	PCB BOARD
98	1	PCB	PCB BOARD
99	1	PCB	PCB BOARD
100	1	PCB	PCB BOARD

NOVA





Technical document or manual page, held in place by blue tape on the left side of the red vehicle body.

Technical document or manual page, held in place by blue tape on the right side of the red vehicle body.



AUTO  
BATT







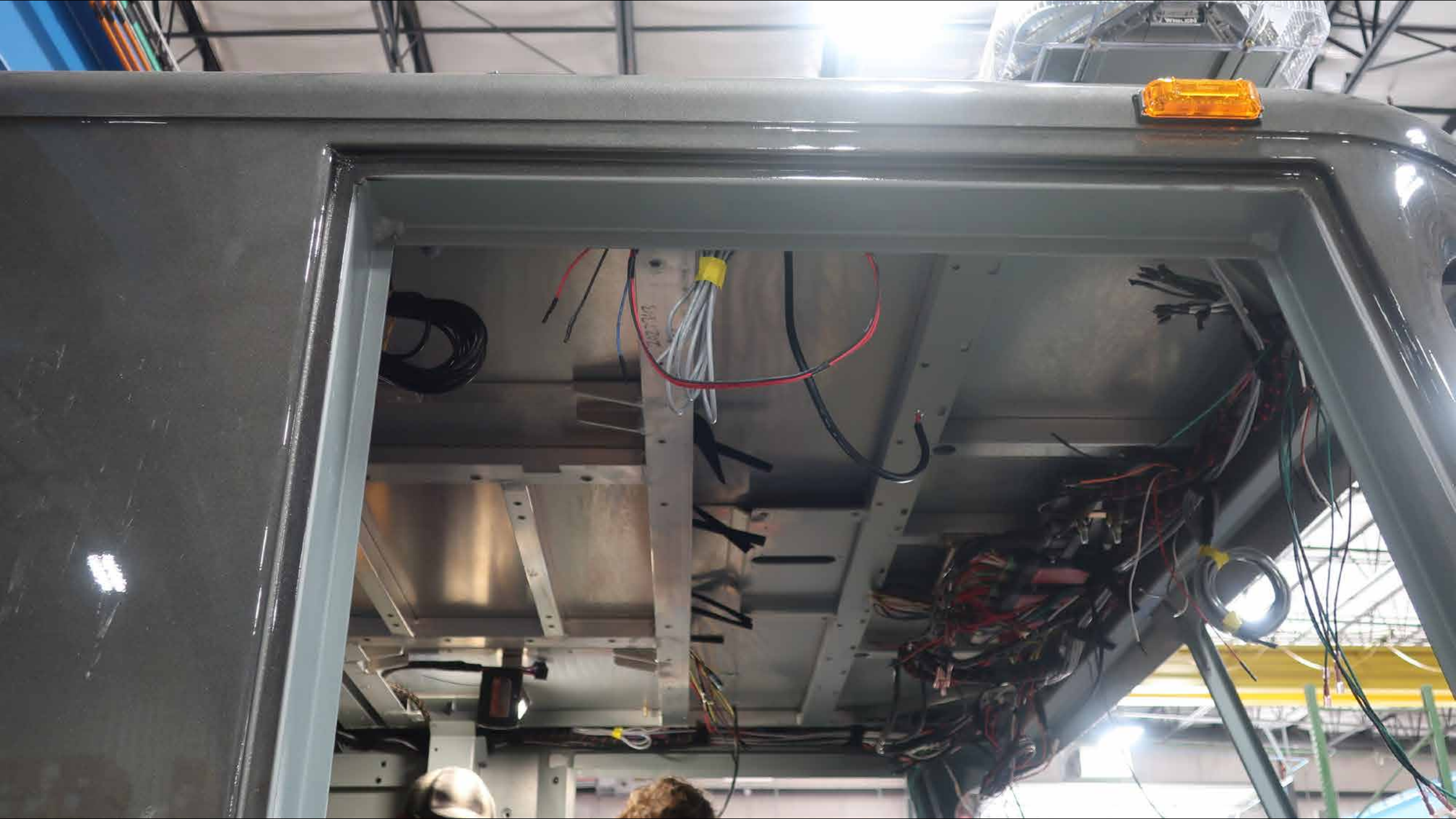
38205-1



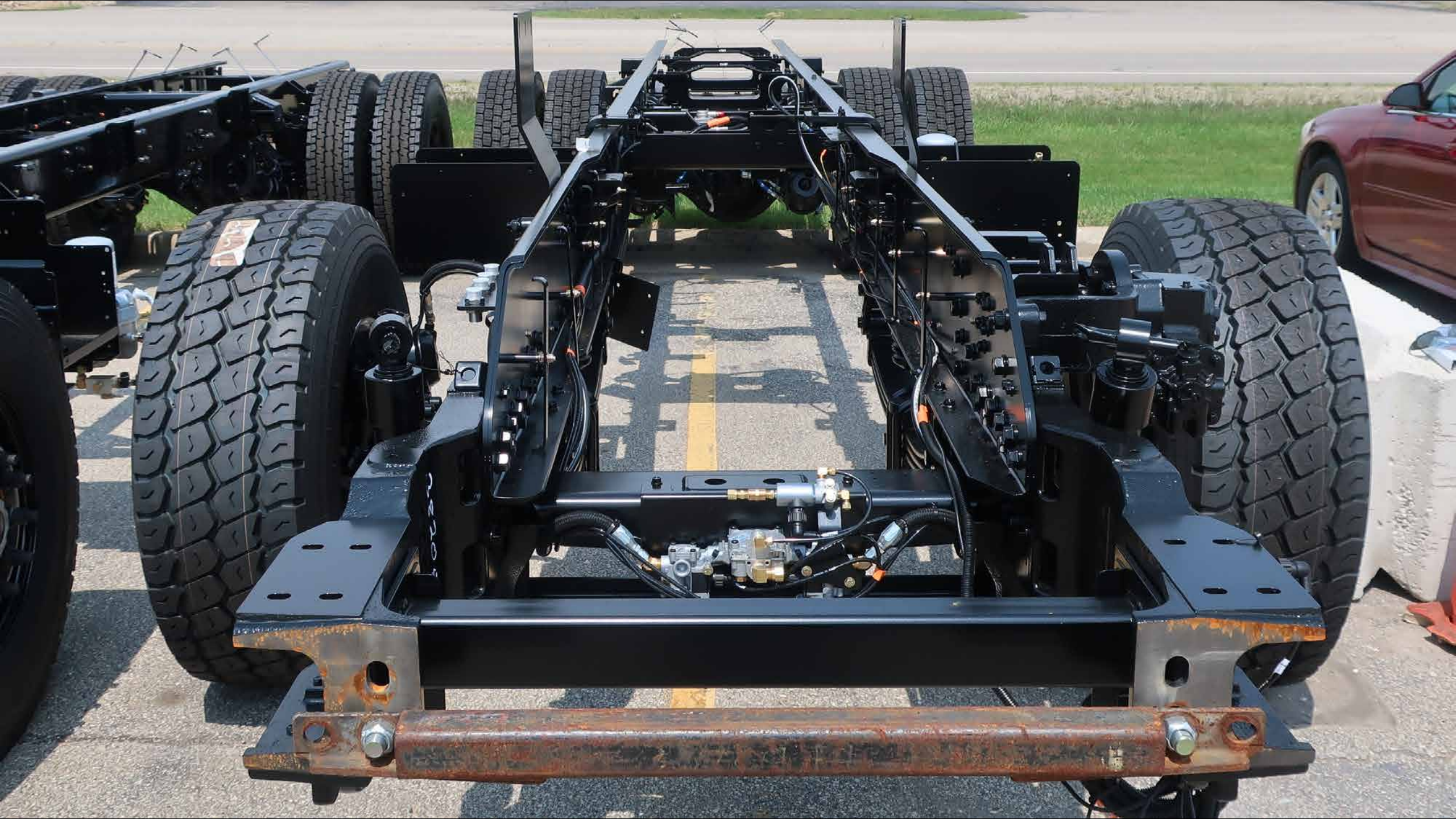






























38205-01

SHIP



36003 01  
LAMP





Handwritten label with a bar chart and text, highlighted by an orange border.

Handwritten notes on the right compartment, including a vertical list of items and the word "Done".





**HUGHES FIRE EQUIPMENT**