

# Photo Album for Pierce Job 38205-01 Capital City Fire and Rescue, AK Custom Arrow XT PUC Pumper

## Wk 7 Production ending June 28, 2024

- The cab and pump have been mounted to the chassis and the pumper continues assembly at the Neenah plant.
- The body has completed weld operations and has begun the paint process at the 41 plant.



STATION 9  
OF CODE 385.0

HOUSEKEEPING

ULINE  
LANDFILL  
LESS

38205-1

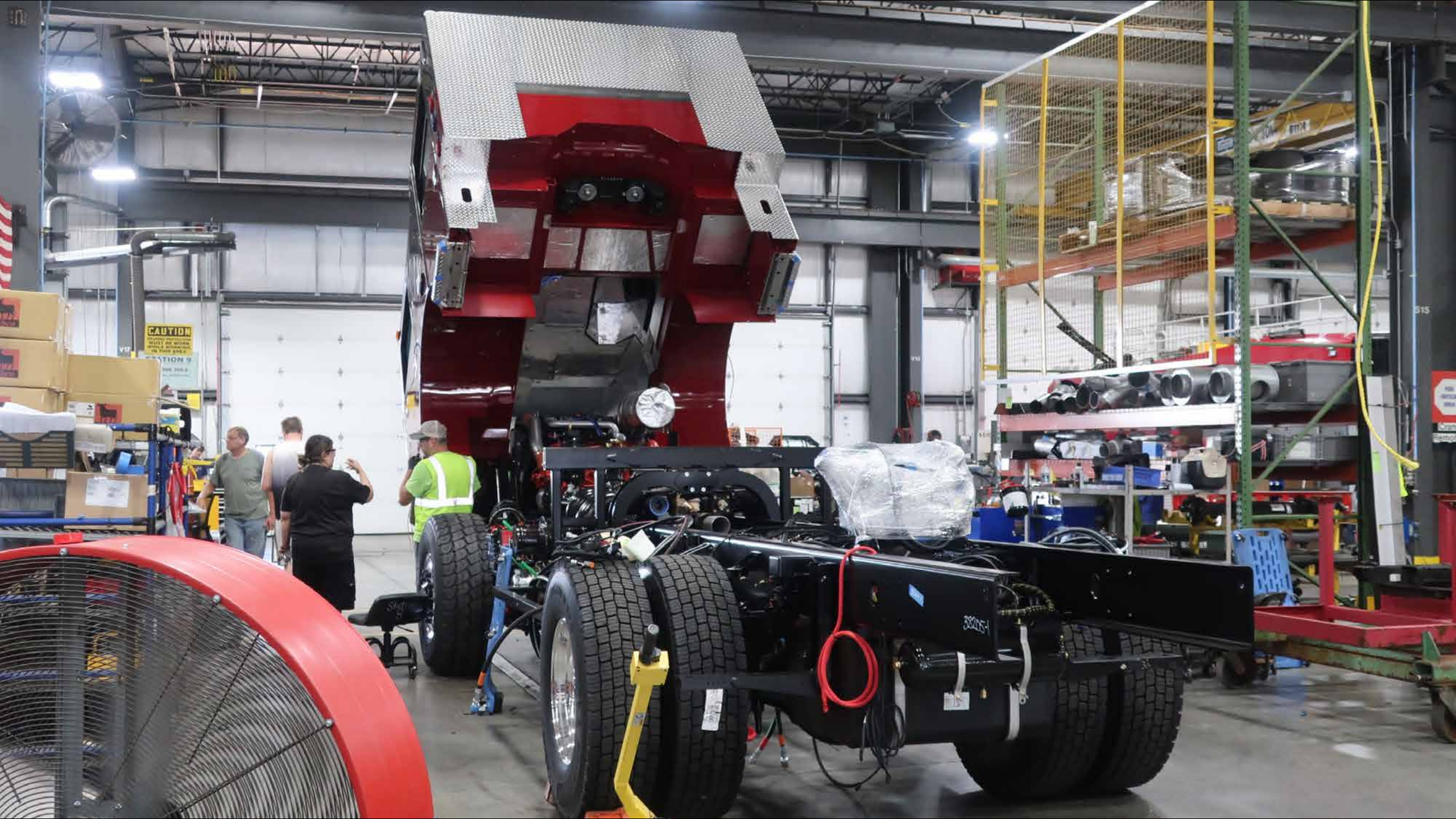
CAUTION  
STATION

12

B1110

ULINE  
LANDFILL  
LESS





CAUTION  
STAY AWAY FROM  
MOTION  
IN THIS AREA

382051





B1111



LANDFILL  
LESS





CAUTION  
STAY OFF

38215









STRYTEN ENERGY  
P-SERIES  
100Ah  
12V  
100Ah  
12V  
100Ah  
12V

425/65R22.5

Station  
8







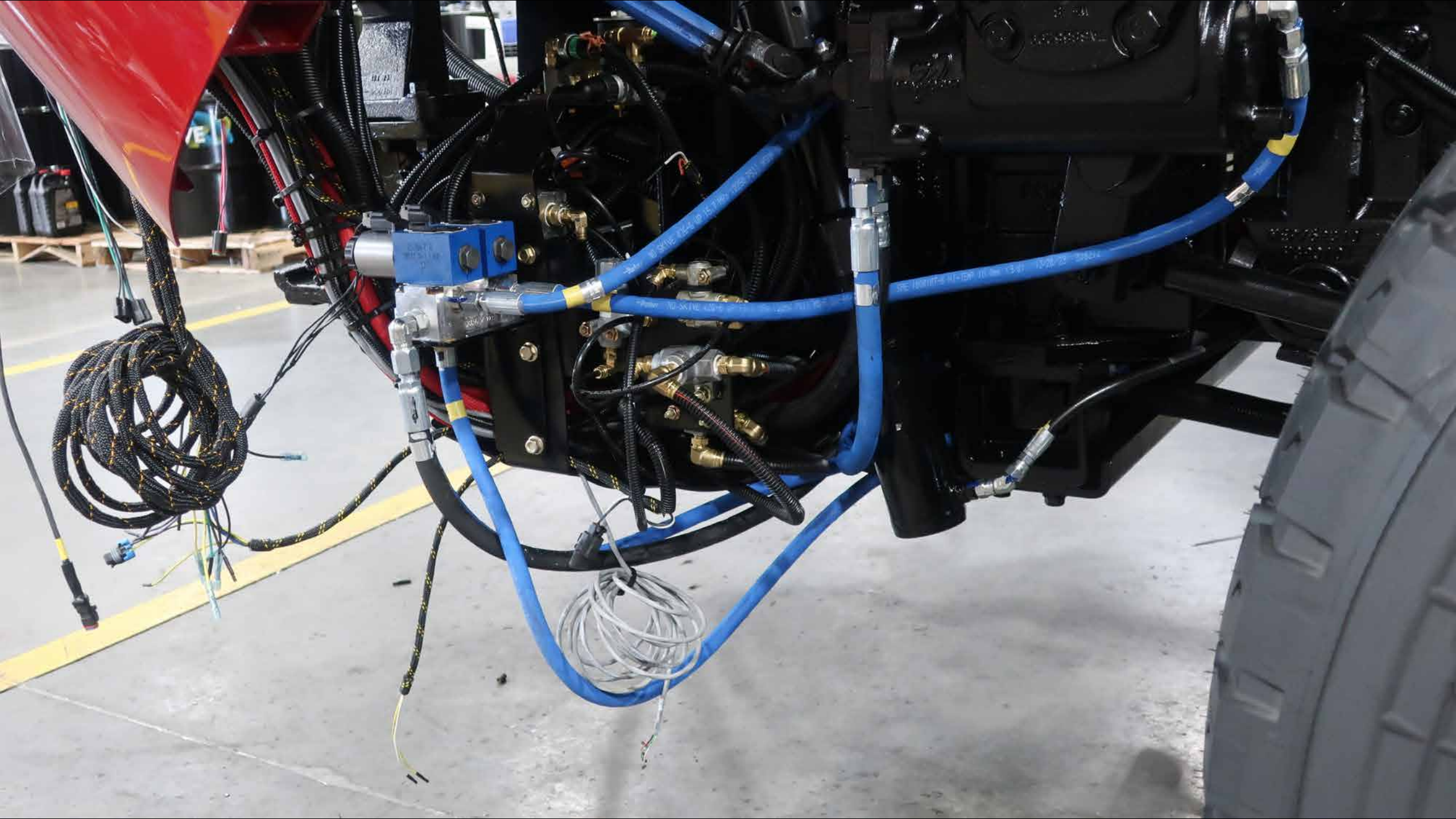


CX12

WARNING

Wipac  
ECT15-10  
100-100-5  
100-100-5









STRYTEN ENERGY  
P-SERIES

STRYTEN

23081181217  
2017





38205-1





B1111

ER

STAYDLE

GRANDP

3820541





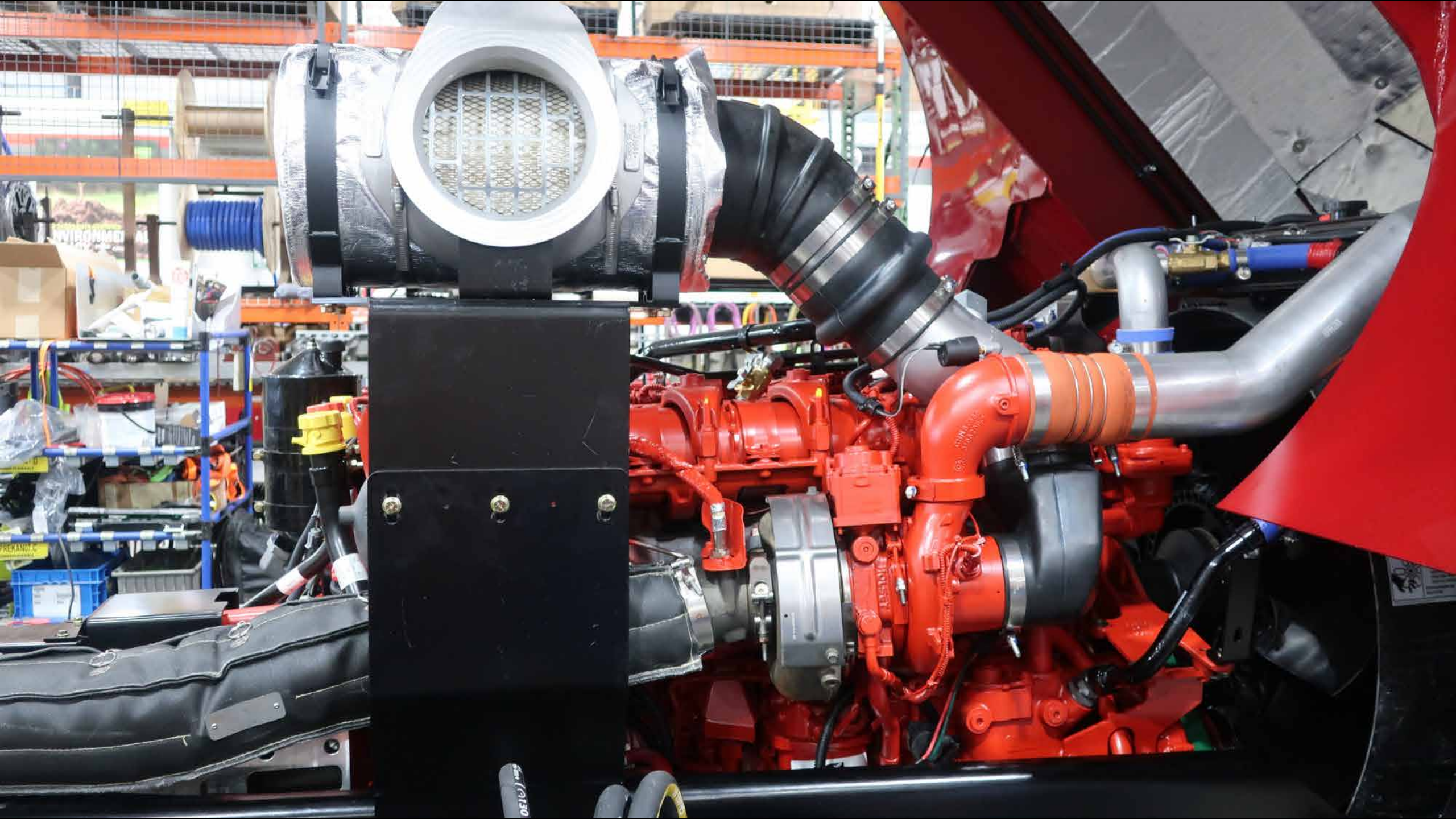




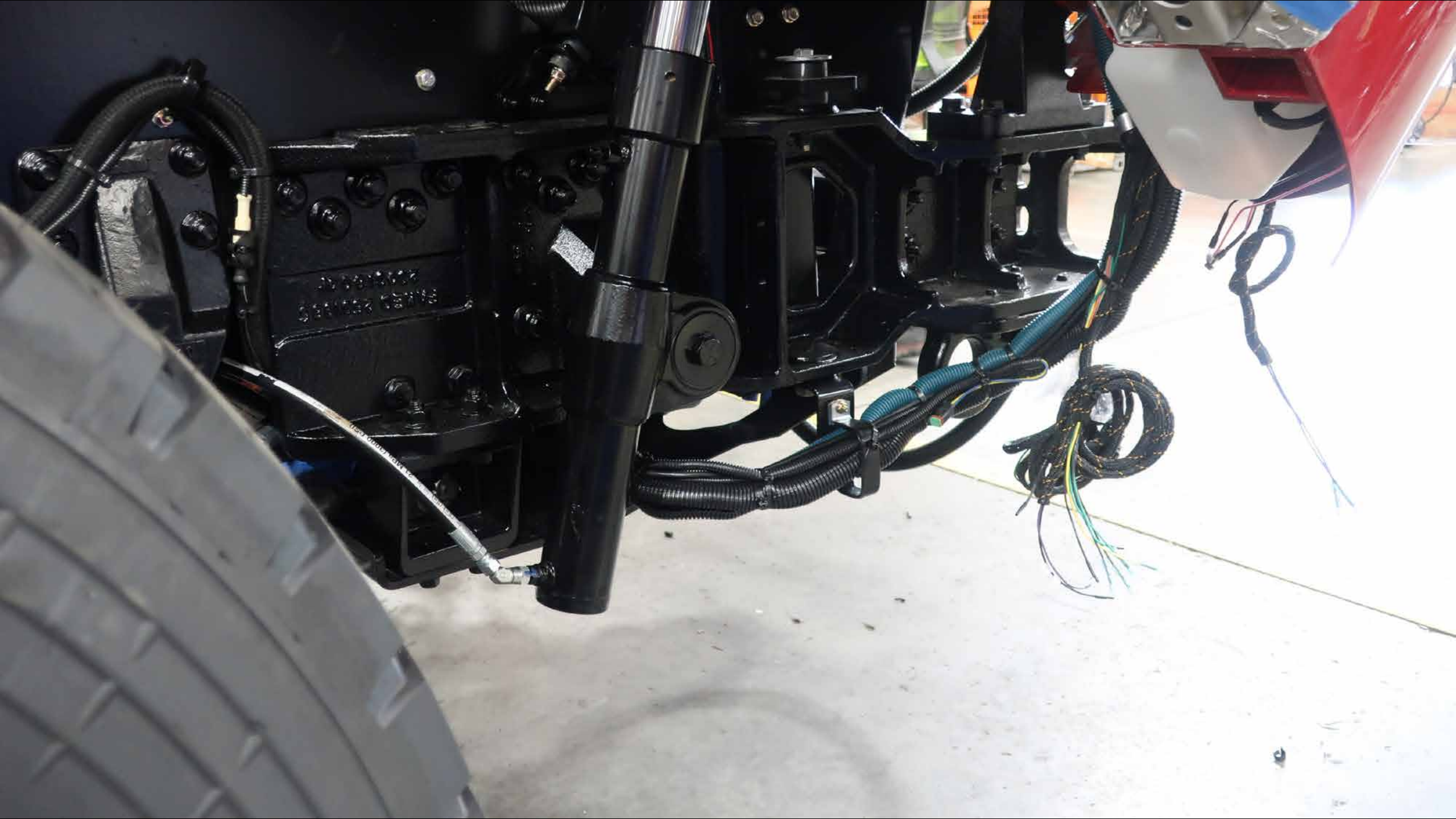
**CAUTION**  
STATION 2  
DO NOT TOUCH

**WARNING**  
Safety glasses and  
ear protection must  
be worn at all times.

































**HUGHES FIRE EQUIPMENT**