

Photo Album for Pierce Job 38205-02 Capital City Fire and Rescue, AK Custom Arrow XT PUC Pumper

Wk 9 Production ending July 19, 2024

- The pumper continues assembly at the 41 plant.
- The body continues assembly at the 41 plant.



J473

PEELING
STATION 1

FAS





T
2
1

PRELINE
STATION 1

HOUSEKEEPING

822682

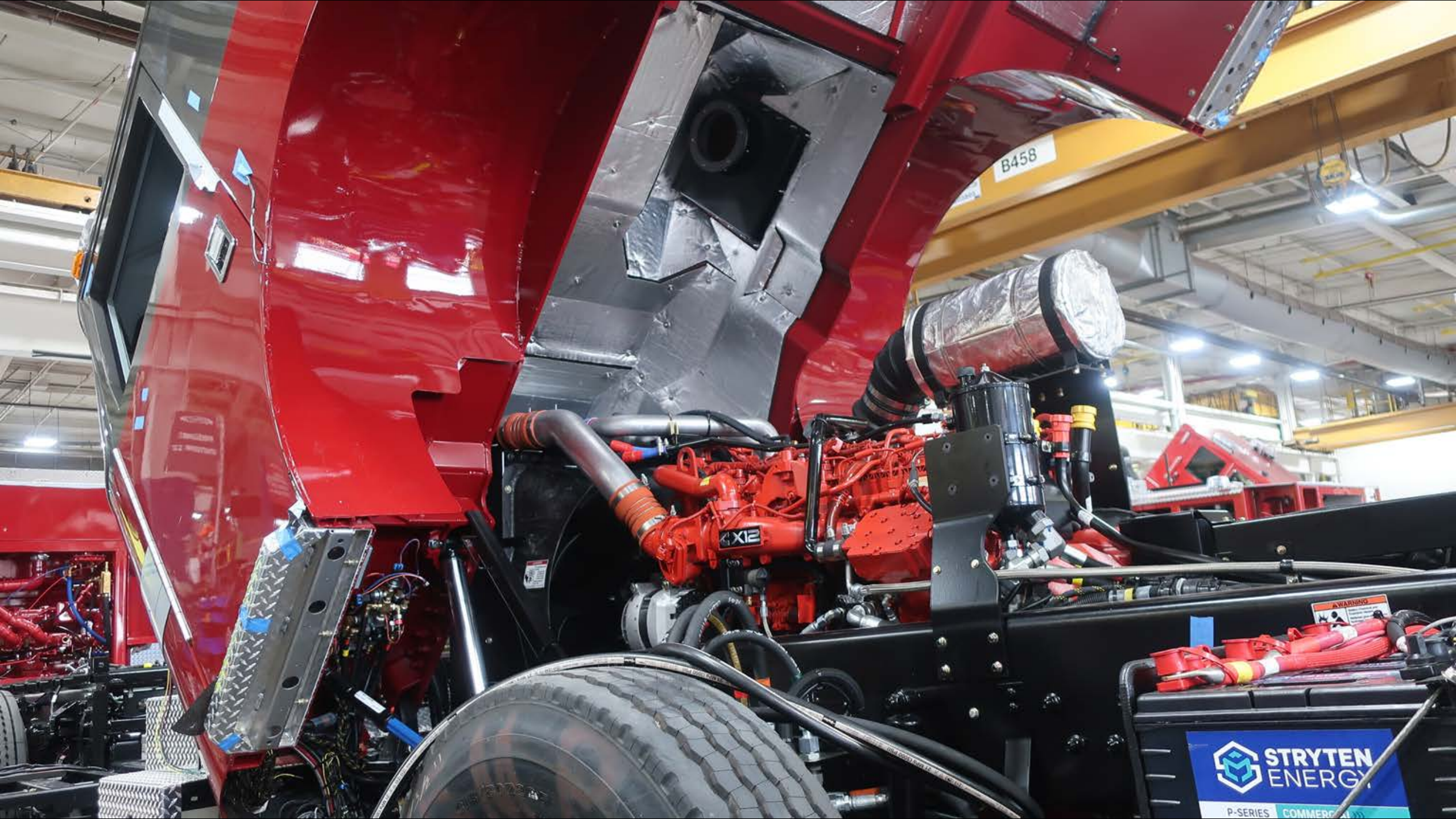
352752



WARNING
HIGH VOLTAGE

J473

VER JEMOLO

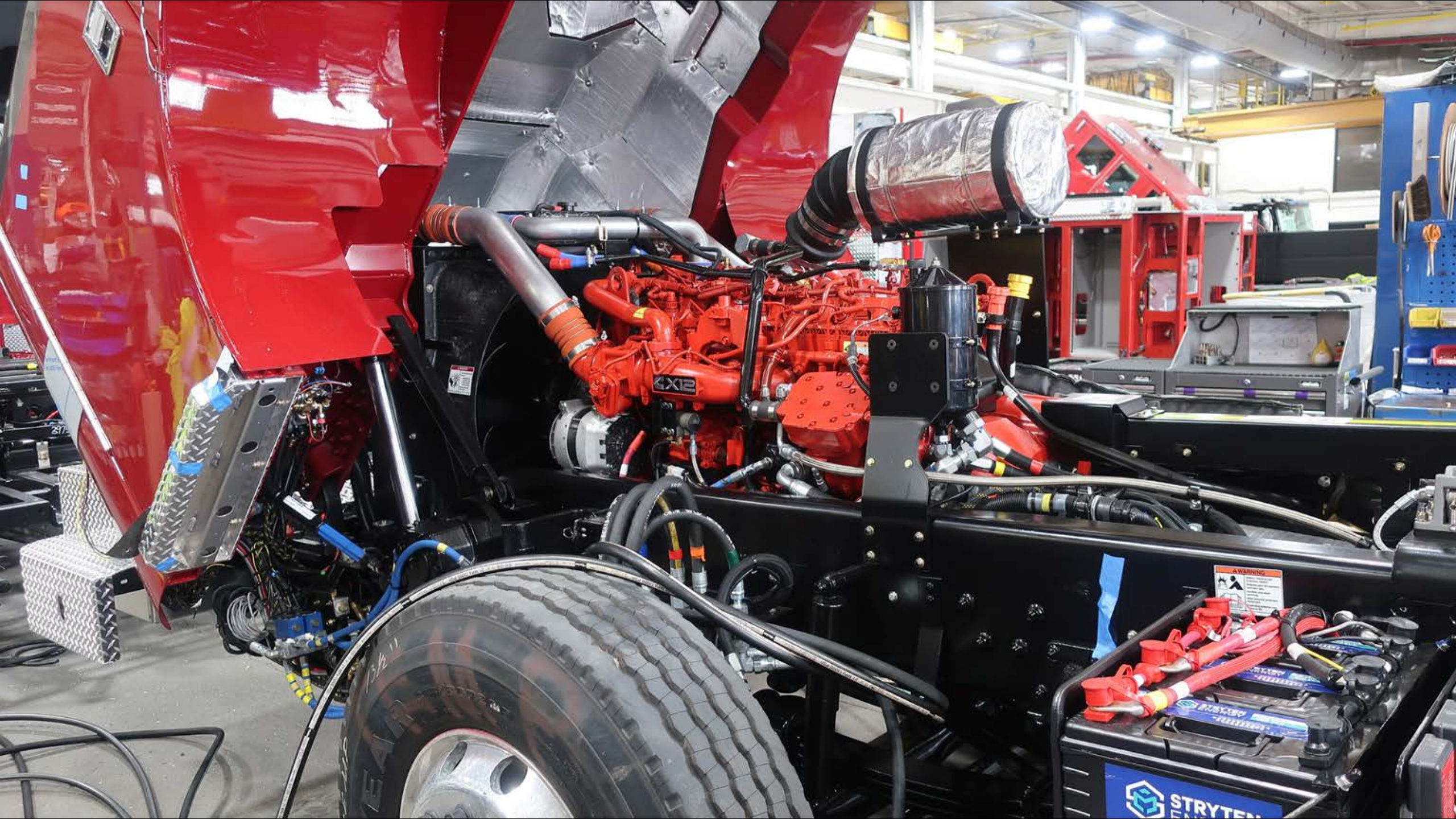


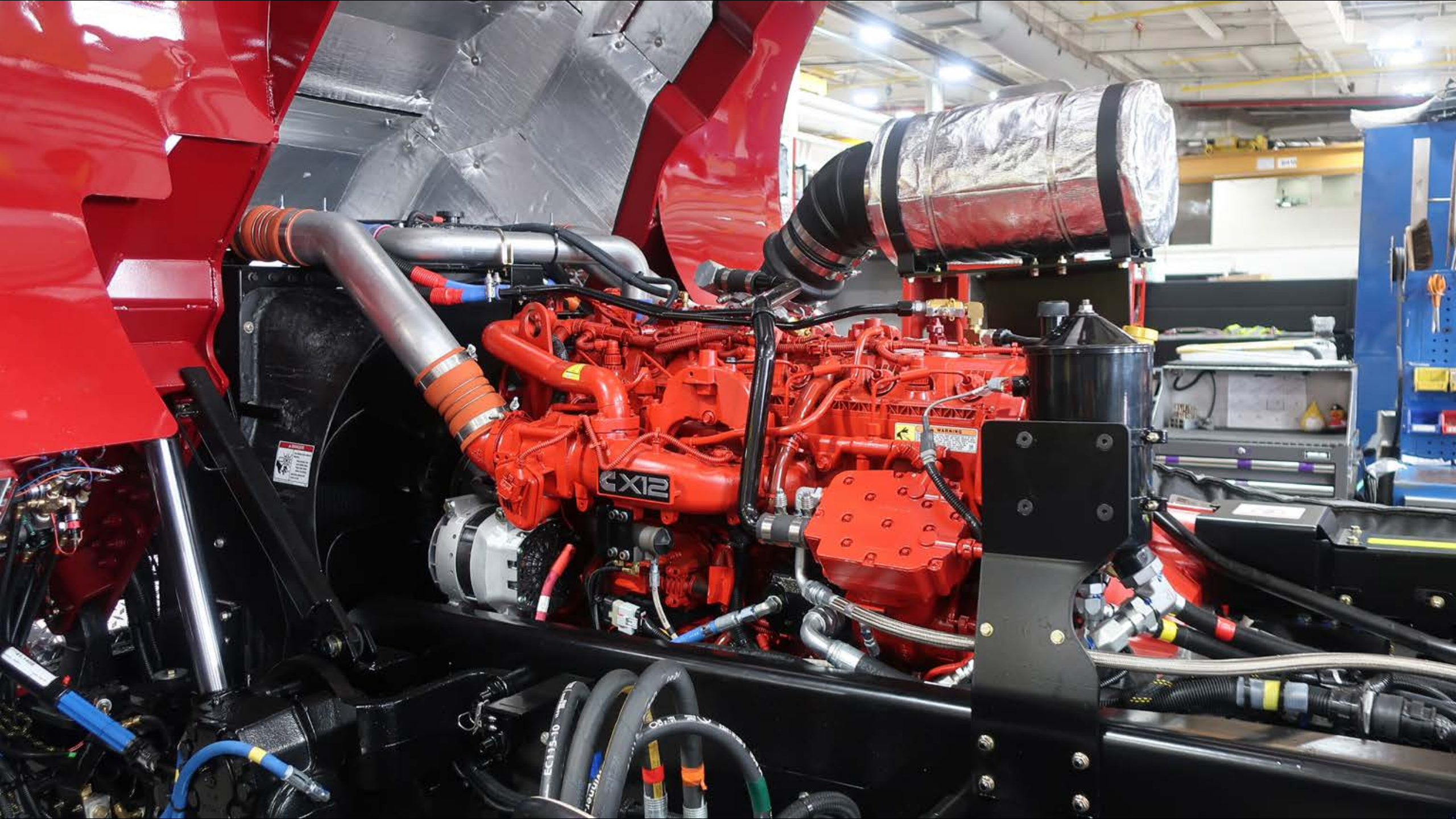
B458

AXIS

 STRYTEN
ENERGY

P-SERIES COMMERCIAL





CX12

WARNING

EC115-10

1000VIA

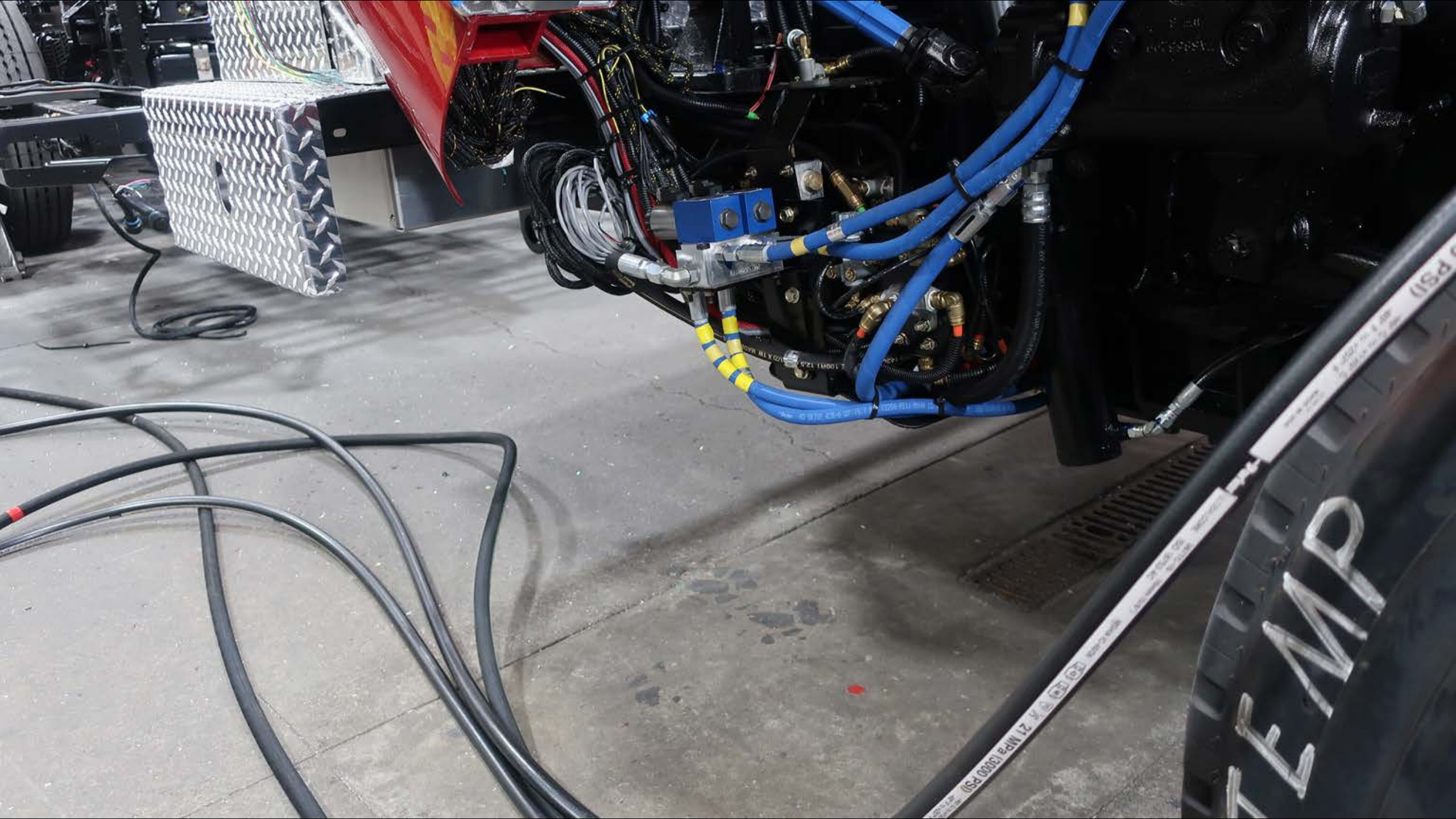
0150



CX12

⚠ DANGER
High Temperature
Parts
Do Not Touch
When Engine is
Running or
Recently
Stopped

Winn
ECS1510
Winn





PRELINE
STATION 1

HOUSEKEEPING

U21



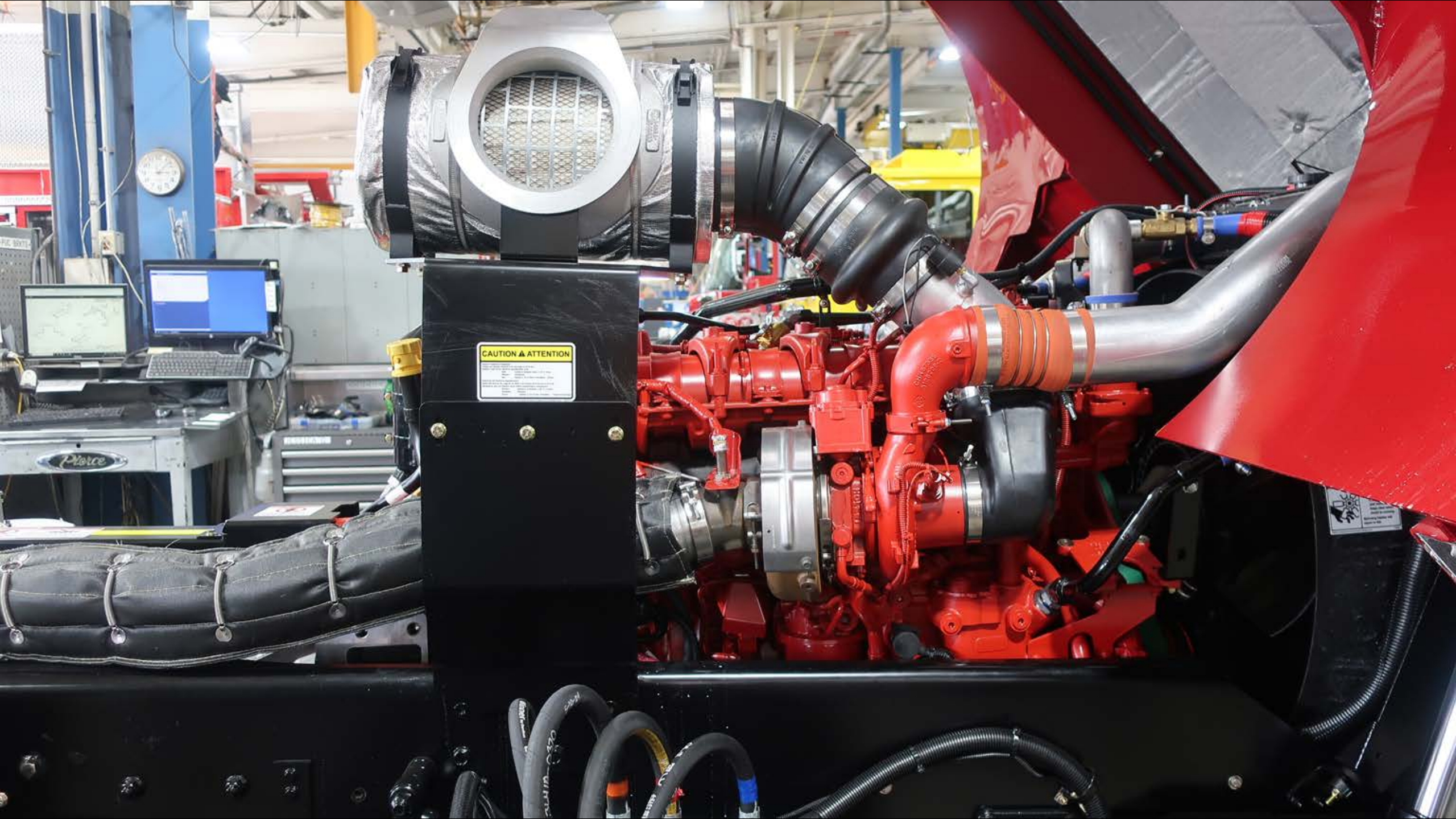


USA
3 TON CAR

CAUTION & ATTENTION

⚠ DANGER ⚠
Do not touch the engine or other hot parts of the truck. They are very hot and can burn you.

44 190 1000 1000



CAUTION & ATTENTION

1. Do not touch the engine or any of its parts when the engine is hot. The engine and its parts can be very hot and cause burns.

2. Do not touch the engine or any of its parts when the engine is running. The engine and its parts can be very hot and cause burns.

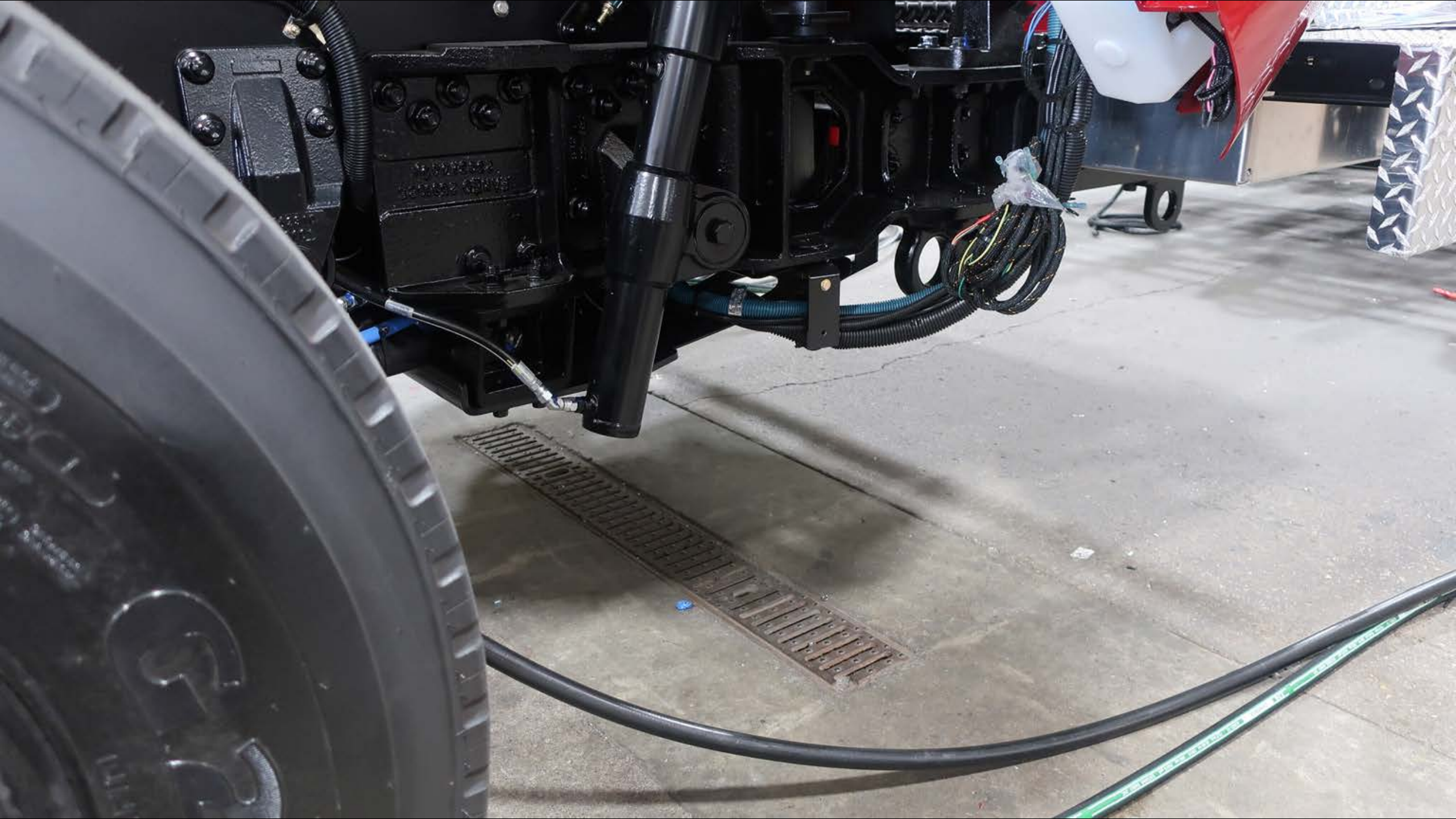
3. Do not touch the engine or any of its parts when the engine is stopped. The engine and its parts can be very hot and cause burns.

4. Do not touch the engine or any of its parts when the engine is stopped. The engine and its parts can be very hot and cause burns.

5. Do not touch the engine or any of its parts when the engine is stopped. The engine and its parts can be very hot and cause burns.

CAUTION

Do not touch the engine or any of its parts when the engine is hot. The engine and its parts can be very hot and cause burns.





38205-2









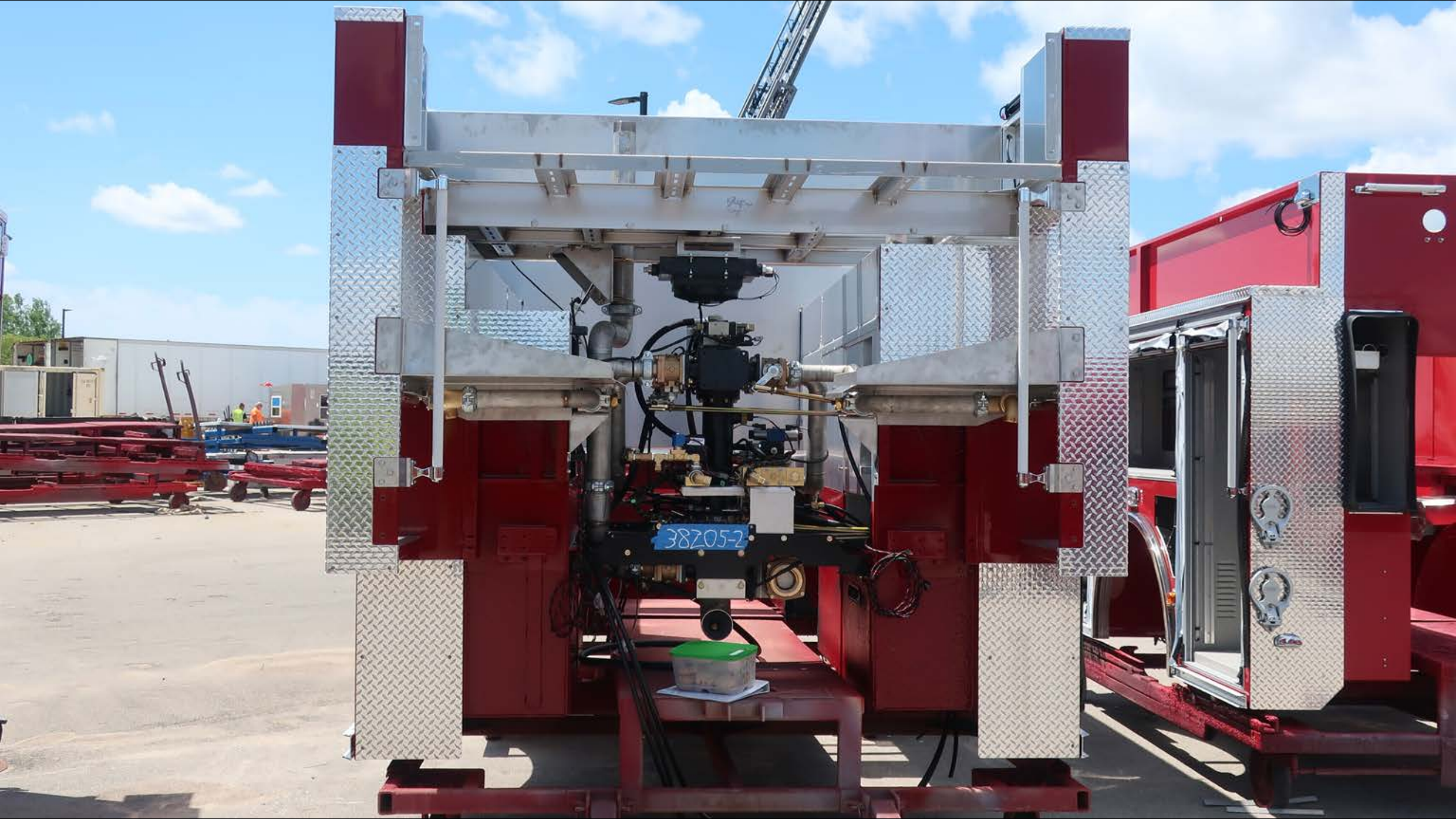


Pierce

TULSA
RESCUE

THE WADDER

38705-2





HUGHES FIRE EQUIPMENT