

Photo Album for Pierce Job 38284 City of Casa Grande Fire Department, AZ Custom Velocity Pumper

Wk 6 Production ending June 14, 2024

- The pump has been mounted to the chassis and the pumper continues assembly at the 41 plant.
- The body has completed the paint process and has begun assembly at the 41 plant.



15654

15654

15654

15654

15654





38284

38284

38284

38284













ULTRA LOW SULFUR
DIESEL FUEL ONLY

E-M
OFF
PANEL
PANEL

HI IDLE
CRUISE



11402
USD02

WHILEN
TRAFFIC ADVISORY
FLASH

Allison
TRANSMISSION

R MODE
N
D

EMERGENCY MASTER ROOF LIGHT FRONT WARNING SIDE WARNING LOWER REAR WARNING UPPER REAR WARNING

ENG BRK ON/OFF ENG BRK LO/MED/HI MIRROR HEAT MEDICAL COOLER OFF-ROAD TRACTION

HIGH BEAM FLASH OPTICON WHITE WARNING MOP AIR AIR TRN SIREN BRAKE

ROAD TO PUMP
1. STOP TRUCK
2. SHIFT TRUCK TRANSMISSION TO NEUTRAL
3. SET PARKING BRAKE
4. THROW LEVER DOWN
5. ENGAGE TRUCK TRANSMISSION INTO DRIVE

PUMP TO ROAD
1. SHIFT TRUCK TRANSMISSION TO NEUTRAL
2. THROW LEVER UP
3. RELEASE PARKING BRAKE APPLY SERVICE BRAKE
4. ENGAGE TRUCK TRANSMISSION

CAUTION
DISREGARD INSTRUCTIONS
WHEN HEAVY LOADS ARE SET
BY SLIPPING TRANSMISSION



 Allison
Transmission

SHIFTER

MONITOR

R

MODE

N



D



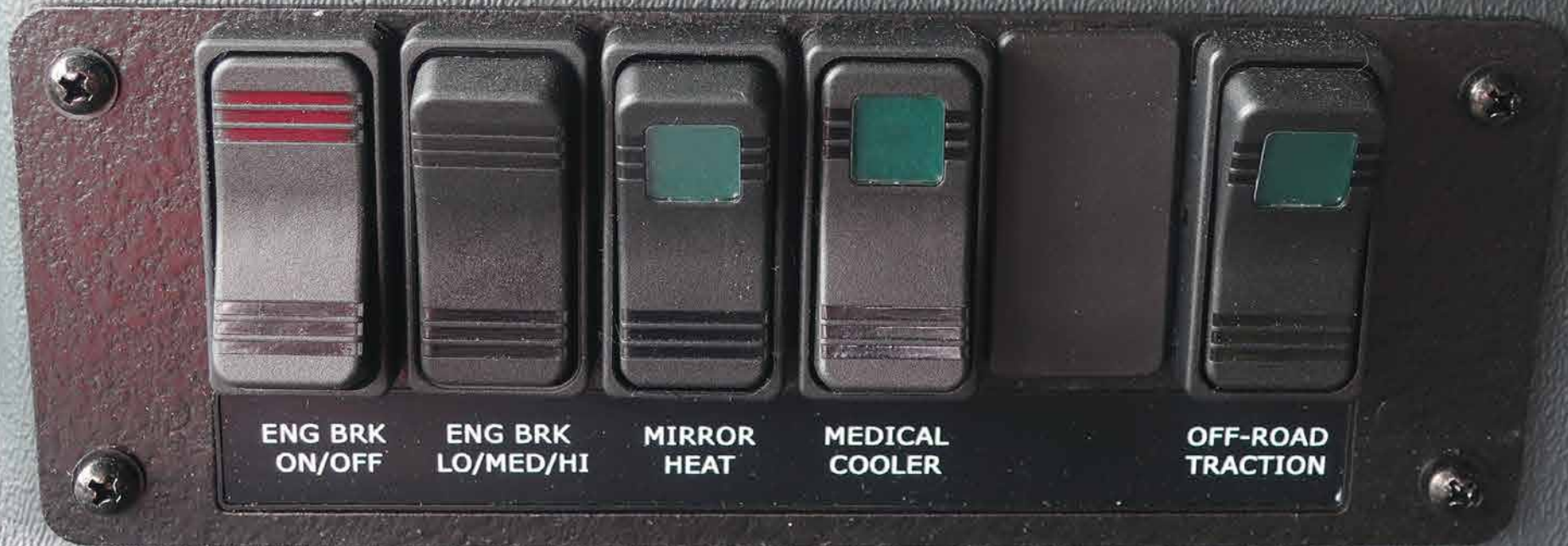
EMERGENCY
MASTER

ENG BRK
ON/OFF

SON
MISSION

SON-SON

MODE



PUM
ENGAC

14023

WHELEN
TRAFFIC ADVISOR™

HIGH
OFF
LOW

LEFT
RIGHT
SPLIT
FLASH

POWER FUNCTION DIRECTION INDICATOR

MODEL: 15A2718
PART: 1718200000
DATE: 10/10/11
MADE IN THE U.S.A.

SIDE WARNING

LOWER REAR WARNING

UPPER REAR WARNING

HIGH BEAM FLASH

OPTICOM

WHITE WARNING

MOMENTARY OPTICOM

AIR CORN

SIREN BRAKE

MEDICAL COOLER

OFF-ROAD TRACTION

ROAD TO PUMP

1. STOP TRUCK
2. SHIFT TRUCK TRANSMISSION TO NEUTRAL
3. SET PARKING BRAKE
4. THROW LEVER DOWN.
5. ENGAGE TRUCK TRANSMISSION INTO DRIVE.

PUMP TO ROAD

1. SHIFT TRUCK TRANSMISSION TO NEUTRAL
2. THROW LEVER UP.
3. RELEASE PARKING BRAKE APPLY SERVICE BRAKE.
4. ENGAGE TRUCK TRANSMISSION.

CAUTION
DISENGAGE RETARDER WHEN VEHICLE IS ON WET OR SLIPPERY SURFACES.



WHELEN
TRAFFIC ADVISOR™

LEFT
RIGHT
SPLIT
FLASH

HIGH
OFF
LOW

POWER FUNCTION DIRECTION INDICATOR



HIGH BEAM FLASH OPTICOM WHITE WARNING MOMENTARY OPTICOM AIR HORN SIREN BRAKE



UPPER REAR WARNING



FRONT FLOOD DRIVER SCENE PASS SCENE REAR SCENE ALLEY LIGHTS LOAD MANAGER

CAUTION





FRONT
FLOOD

DRIVER
SCENE

PASS
SCENE

REAR
SCENE

ALLEY
LIGHTS

LOAD
MANAGER



POWER

MAN 2

HF

T1

MAN 1

T2

RAD

T3

MIC VOL.

MAN

HORN

SPEAKERS

1

2

















FREE AIRLIFT
114028
USDOT

SRS

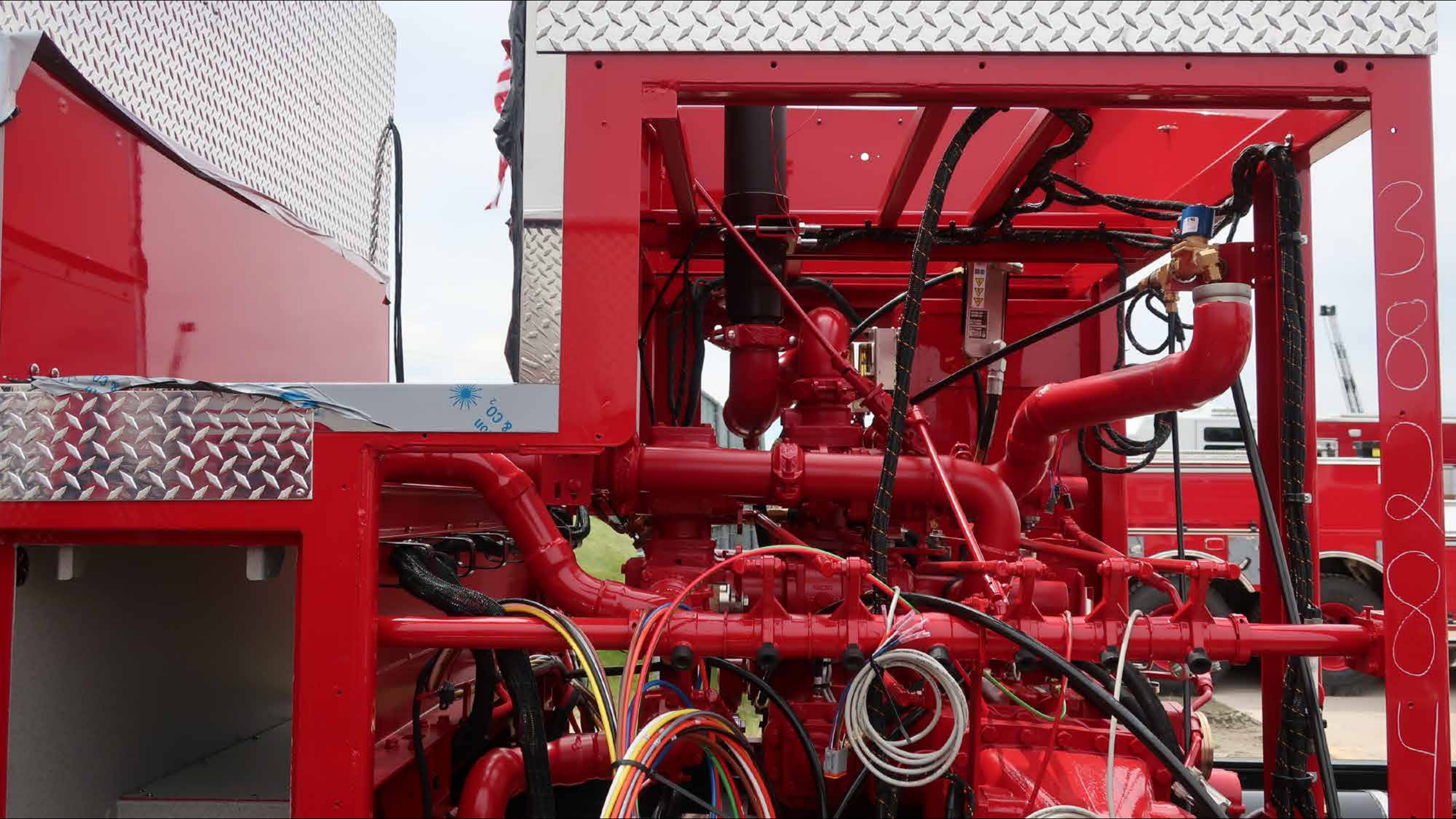


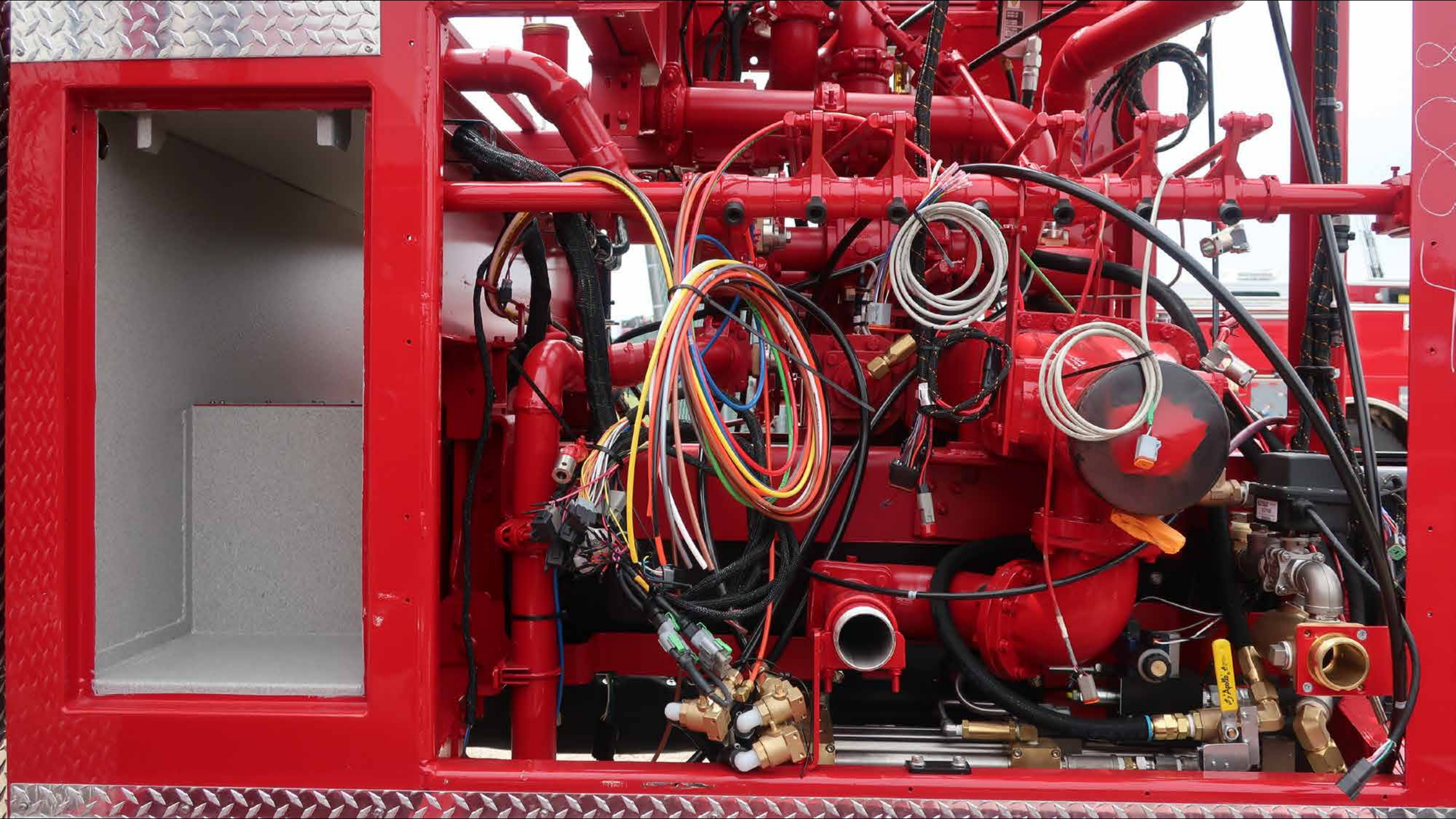


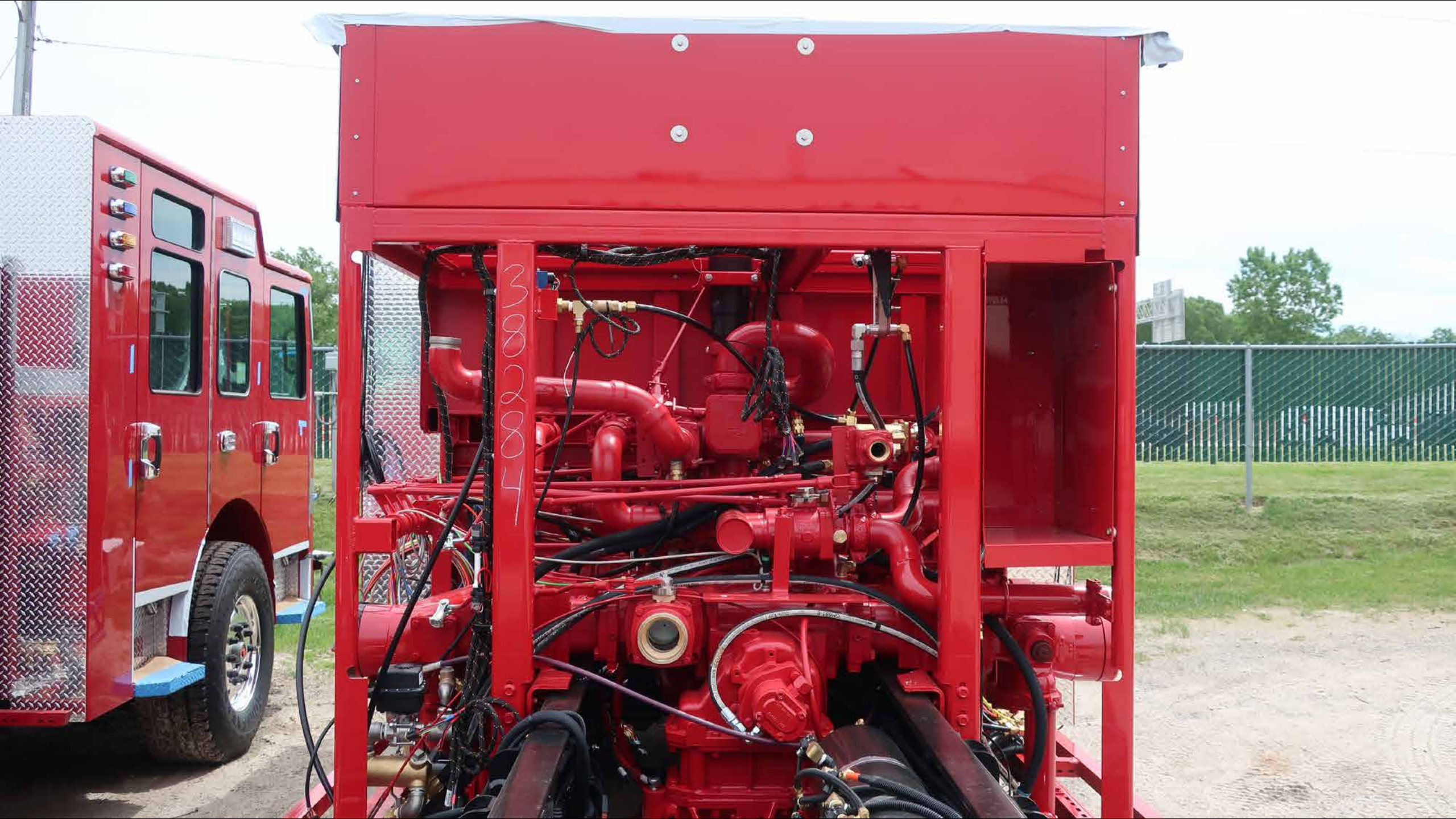
WESTY
1000

WESTY
1000
UP

3000





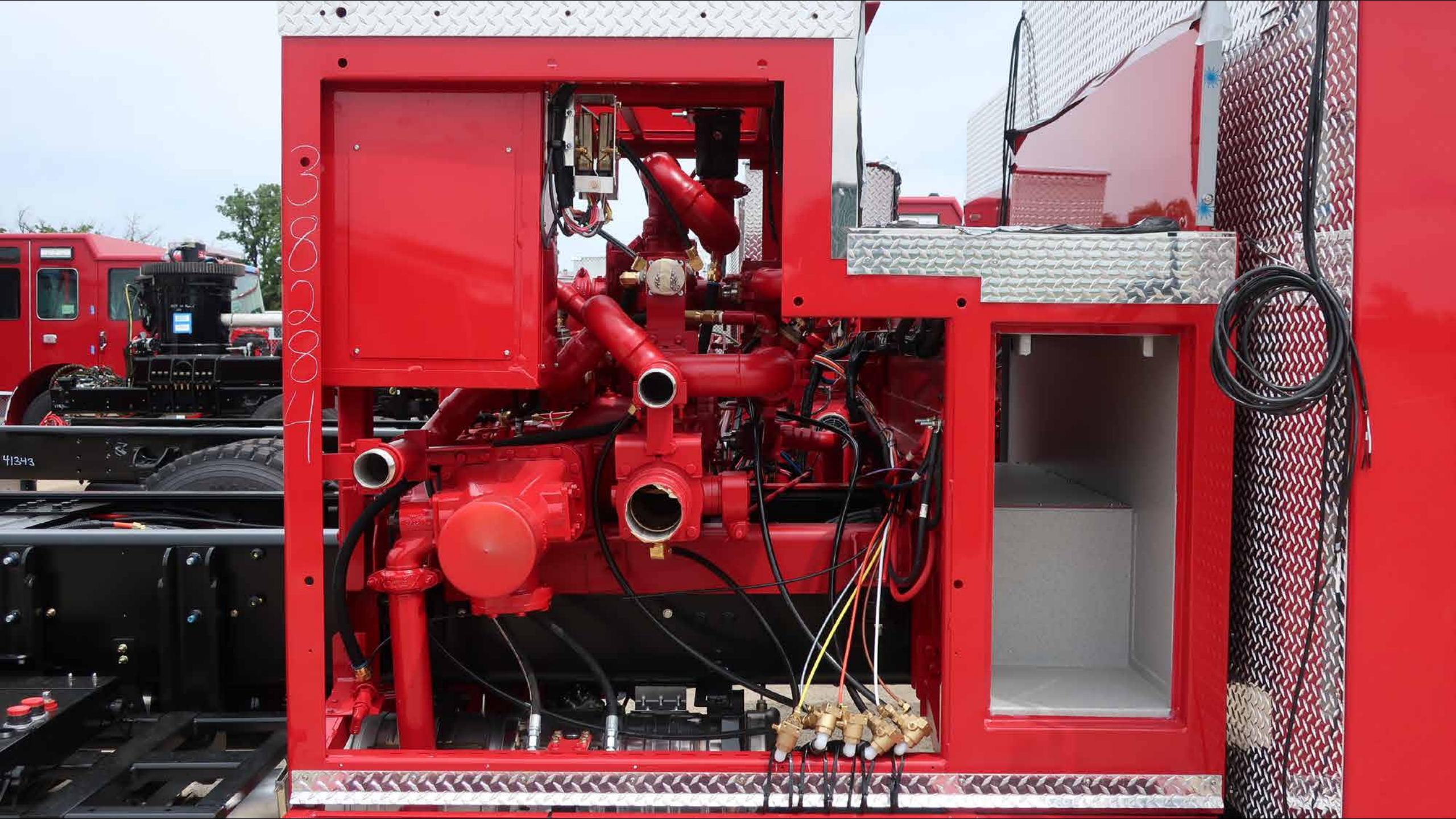


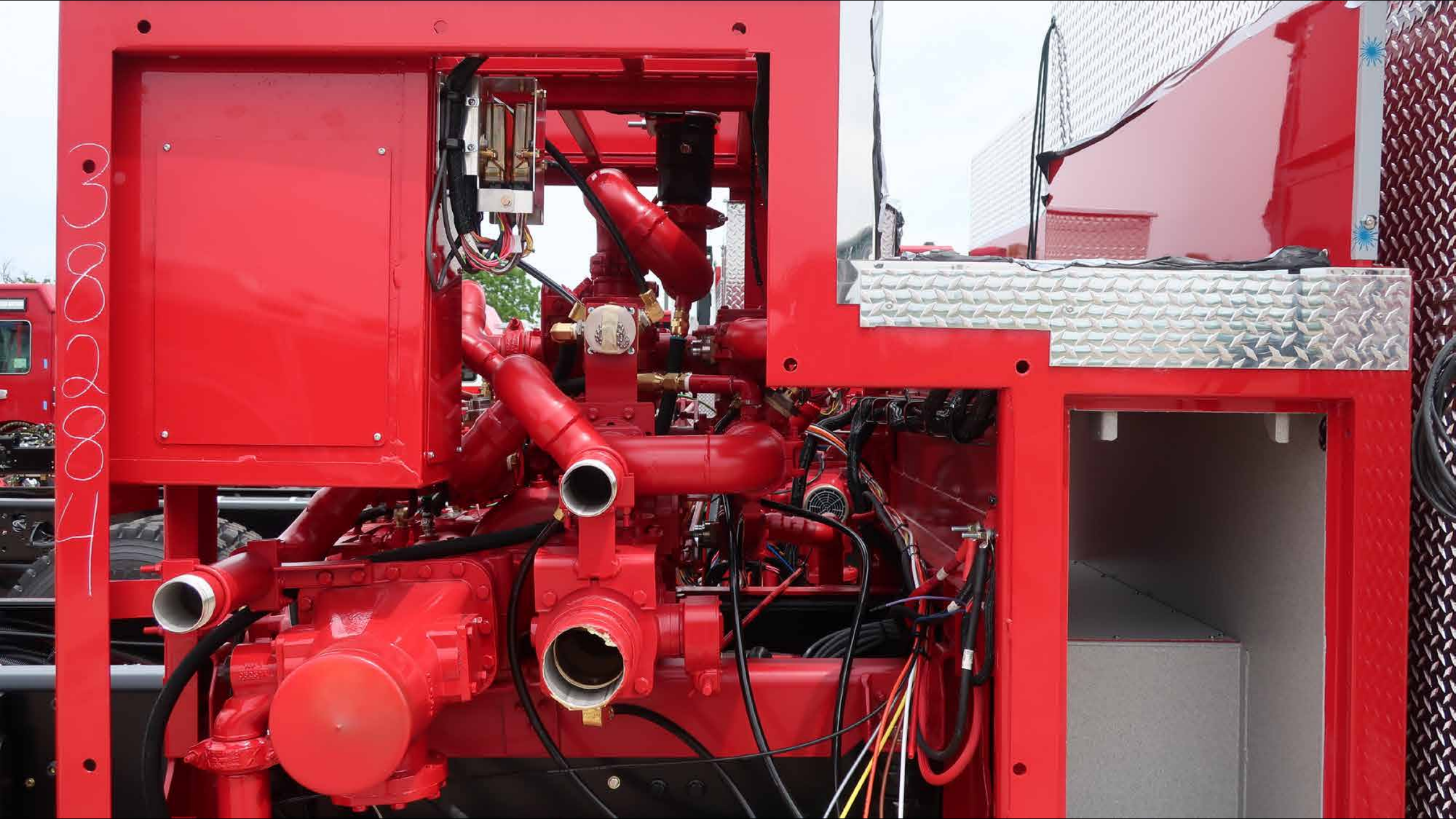
5002007



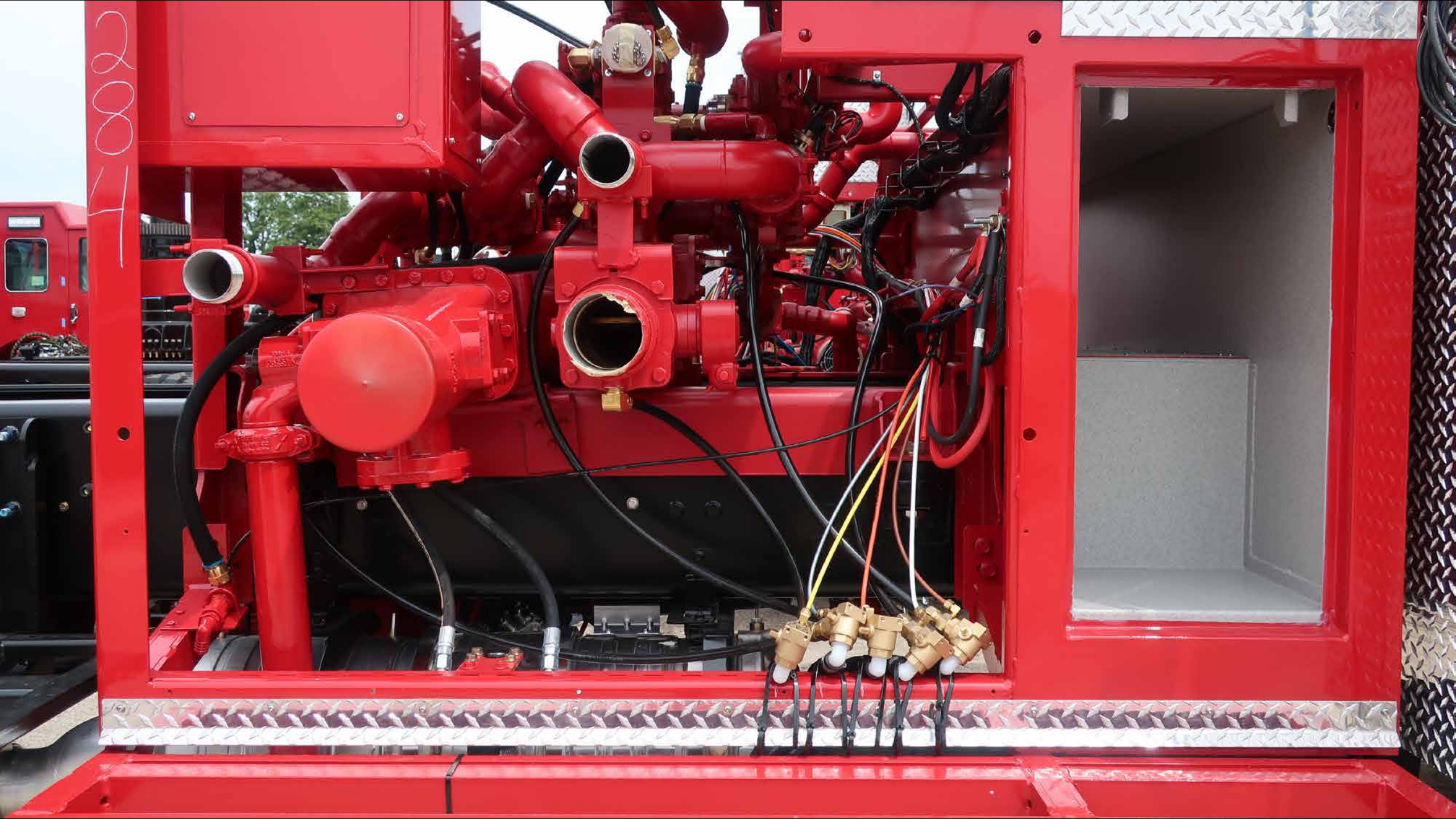








17002003



17002











Pierce P36

SRS

CAUTION





WARNING DO NOT OPERATE
UNLESS ALL SAFETY
DEVICES ARE PROPERLY
OPERATING AND ALL
SAFETY DEVICES ARE
PROPERLY MAINTAINED
AND ALL SAFETY DEVICES
ARE PROPERLY MAINTAINED

WARNING DO NOT OPERATE
UNLESS ALL SAFETY
DEVICES ARE PROPERLY
OPERATING AND ALL
SAFETY DEVICES ARE
PROPERLY MAINTAINED
AND ALL SAFETY DEVICES
ARE PROPERLY MAINTAINED



LTE

GPS



R2R







**FRONT
FLOOD**

**DRIVER
SCENE**

**PASS
SCENE**

**REAR
SCENE**

Bluetooth

JENSEN
HEAVY DUTY

NOAA



MODE
PAIR



BAND
SCROLL

1

2

3

4

5

6

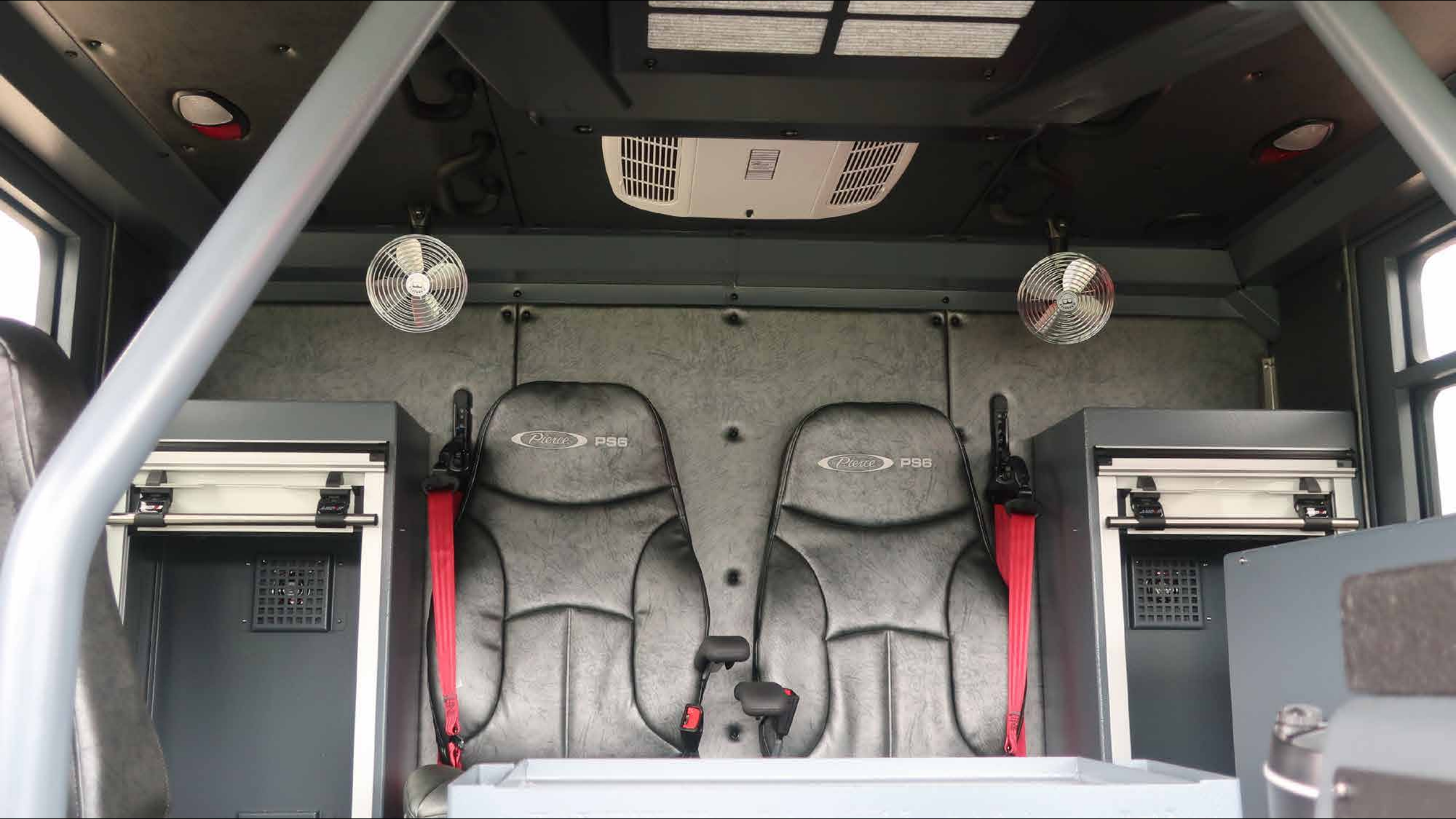
ENTER
INFO



PS
AS



JHD12



Pierce P56

Pierce P56



38284

orce



38284

4343









38284



HUGHES FIRE EQUIPMENT