

Photo Album for Pierce Job 38284  
City of Casa Grande Fire Department, AZ  
Custom Velocity Pumper

Wk 7 Production ending June 21, 2024

- The body has been mounted to the chassis and the pumper continues assembly at the 41 plant.



648

650

641

647

















Pierce P56

CAUTION  
WARNING  
DO NOT TOUCH  
THIS AREA  
UNLESS YOU ARE  
A QUALIFIED  
TECHNICIAN  
OR A PERSON  
WHOSE JOB  
REQUIRES IT.  
FAILURE TO  
COMPLY WITH  
THIS WARNING  
MAY RESULT  
IN SERIOUS  
INJURY OR  
DEATH.

ALTO SCALES  
CONSUMER



Police





EMERGENCY MASTER  
ROOF LIGHT  
LIGHT WARNING  
TIRE WARNING  
LOW OIL WARNING  
WATER TANK WARNING

R MODE  
N  
D

ENG BRK ON/OFF  
ENG BRK LOCK/RESIST  
HORNER HORN  
MEDICAL COOLER  
OFF ROAD Traction

ROAD TO PUMP  
1. STOP TRUCK  
& SHUT OFF ENGINE  
2. SET PARKING BRAKE  
& CHOCK WHEELS  
& BRIDGE BRACK  
DANGER: DO NOT  
RE-ENTER TRACK  
UNTIL ALL  
PERSONNEL ARE  
CLEAR

PUMP TO ROAD  
1. SET TRUCK  
BRAKES TO HOLD  
2. SHOCK UP IN  
3. RELEASE TRUCK  
BRAKE WHEEL  
BLOCK BRACK

CAUTION

PSE

Race



ULTRA LOW SULFUR  
DIESEL FUEL ONLY



SPOTTER  
WHEN  
Key Points  
1. If you are  
2. If you are  
3. Always  
4. Always  
5. Enter  
6. Enter



Large digital display screen with navigation controls below it, including directional arrows and a home button.

**ADISON**  
30-3-308

R MODE  
N  
D

EMERGENCY MASTER ROOF LIGHT FRONT WASHING SIDE WARNING LOWER REAR WARNING UPPER REAR WARNING

ENG BRK ON/OFF ENG BRK LO/MED/HI MIRROR HEAT MEDICAL COOLER OFF-ROAD TRACTION

WHILEN  
HIGH BEAM FLASH OPTICON WHITE WARNING AIR DRN SIREN BRAKE

**ROAD TO PUMP**  
1. STOP TRUCK  
2. SHIFT TRUCK TRANSMISSION TO NEUTRAL  
3. SET PARKING BRAKE  
4. THROW LEVER DOWN  
5. ENGAGE TRUCK TRANSMISSION INTO DRIVE

**PUMP TO ROAD**  
1. SHIFT TRUCK TRANSMISSION TO NEUTRAL  
2. THROW LEVER UP  
3. RELEASE PARKING BRAKE APPLY SERVICE BRAKE  
4. ENGAGE TRUCK TRANSMISSION

**CAUTION**



**Alison**  
Transmission

SELECT MONITOR

R MODE

N

D

Up/Down/Left/Right directional pad

EMERGENCY MASTER

ENG BRK ON/OFF

Wilson  
Transmission

RO-1-Z03

MODE



EMERGENCY  
MASTER

ROOF  
LIGHT

FRONT  
WARNING

SIDE  
WARNING

LOWER  
REAR  
WARNING

UPPER  
REAR  
WARNING

ENG BRK  
ON/OFF

ENG BRK  
LO/MED/HI

MIRROR  
HEAT

MEDICAL  
COOLER

OFF-ROAD  
TRACTION

PUMP  
ENGAGED

CAUTION  
DISENGAGE



WHELEN  
TRAFFIC ADVISOR™

HIGH  
OFF  
LOW

LEFT  
RIGHT  
SPLIT  
FLASH

POWER FUNCTION DIRECTION INDICATOR

SIDE WARNING  
LOWER REAR WARNING  
UPPER REAR WARNING

HIGH BEAM FLASH  
OPTICOM  
WHITE WARNING  
MOMENTARY OFF  
AIR BORN  
SIREN BRAKE

MEDICAL COOLER  
OFF-ROAD TRACTION

PUMP ENGAGED  
OK TO PUMP

ROAD TO PUMP  
1. STOP TRUCK  
2. SHIFT TRUCK TRANSMISSION TO NEUTRAL.  
3. SET PARKING BRAKE.  
4. THROW LEVER DOWN.  
5. ENGAGE TRUCK TRANSMISSION INTO DRIVE.

PUMP TO ROAD  
1. SHIFT TRUCK TRANSMISSION TO NEUTRAL.  
2. THROW LEVER UP.  
3. RELEASE PARKING BRAKE APPLY SERVICE BRAKE.  
4. ENGAGE TRUCK TRANSMISSION.

**CAUTION**  
DISENGAGE RETARDER  
WHEN VEHICLE IS ON WET  
OR SLIPPERY SURFACES.

**WHELEN®**  
TRAFFIC ADVISOR™

LEFT  
RIGHT  
SPLIT  
FLASH

HIGH  
OFF  
LOW

POWER      FUNCTION      DIRECTION INDICATOR



WHELEN CORPORATION  
1000 W. 10TH ST. SUITE 100  
DENVER, CO 80202  
TEL: 303.733.1100  
FAX: 303.733.1101  
WWW.WHELEN.COM

HIGH BEAM FLASH      OPTICOM      WHITE WARNING      MOMENTARY OPTICOM      AIR HORN      SIREN BRAKE





WARNING  
DO NOT REMOVE THIS LABEL  
UNLESS YOU ARE A QUALIFIED  
TECHNICIAN  
DRIVING

FRONT FLOOD DRIVER SCENE PASS SCENE REAR SCENE ALLEY LIGHTS LOAD MANAGER





**FRONT  
FLOOD**

**DRIVER  
SCENE**

**PASS  
SCENE**

**REAR  
SCENE**

**ALLEY  
LIGHTS**

**LOAD  
MANAGER**

A  
O  
A



POWER

MAN 2

HF

T1

MAN 1

T2

RAD

T3

MIC VOL.

MAN

HORN

SPEAKERS

1

2



GEBHARDT















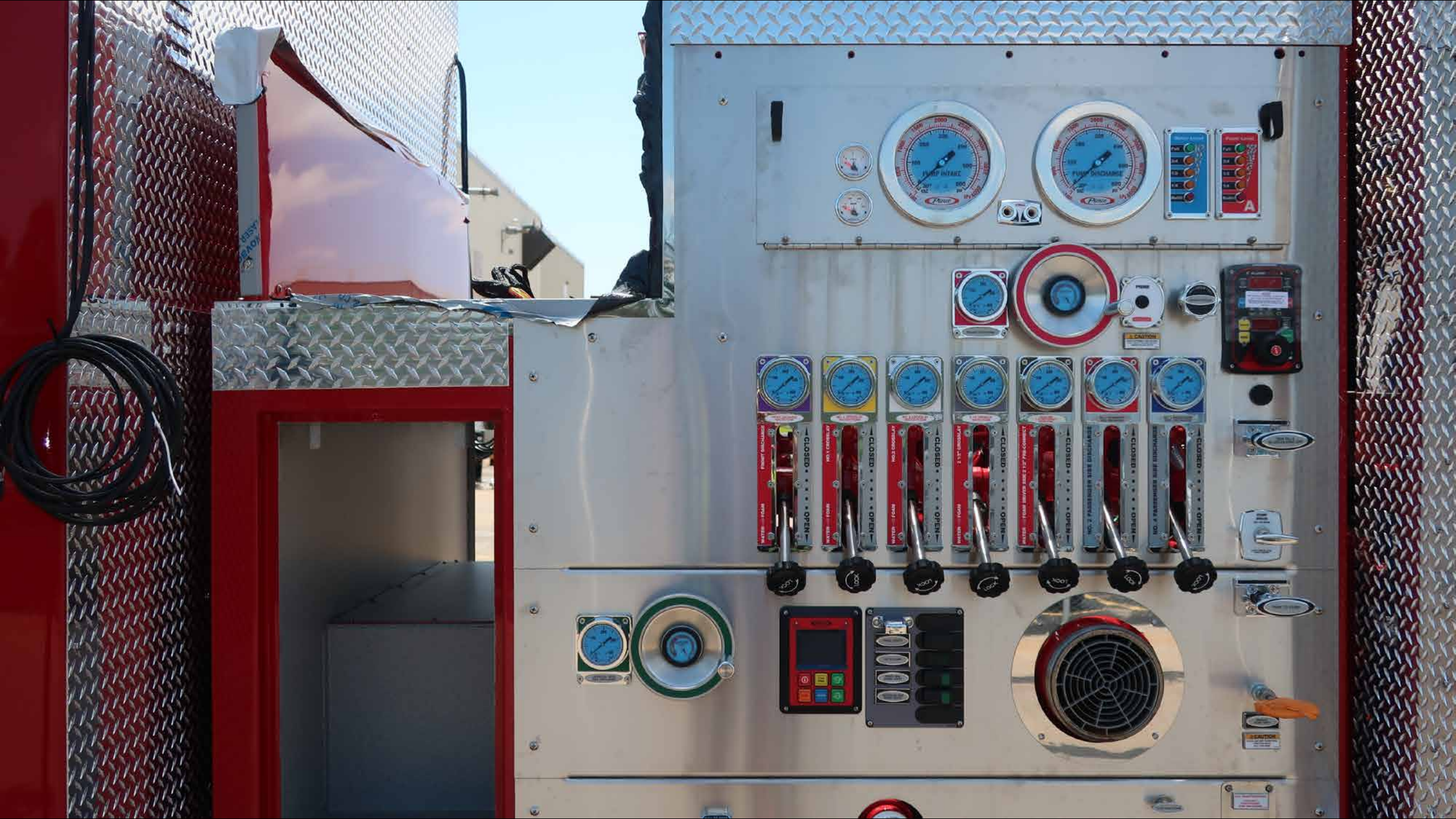
















CAUTION  
Excessive pressure may occur when  
using water, foam, carbon dioxide, and  
foaming electric water.





**CAUTION**  
OPERATING PRIMING PUMP FOR MORE THAN 1 MINUTE CONTINUOUSLY MAY DAMAGE ELECTRIC MOTOR  
1000-03





FRONT DISCHARGE  
WATER-FOAM



NO. 1 CROSSLAY  
WATER-FOAM



NO. 2 CROSSLAY  
WATER-FOAM



2 1/2" CROSSLAY  
WATER-FOAM







MANUAL  
PUMP SHIFT

**CAUTION**  
PLACE CAB SHIFT IN NEUTRAL  
PUSH FOR ROAD  
PULL FOR PUMP



LARGE DIA. PASS.  
SIDE DISCHARGE







FLUSH VALVE DRAIN



AIR SUPPLY

AIR INLET-  
OUTLET



PULL TO OPEN  
NO. 1 CROSSLAY

PULL TO OPEN

PULL TO OPEN  
MANIFOLD DRAIN

PULL TO OPEN



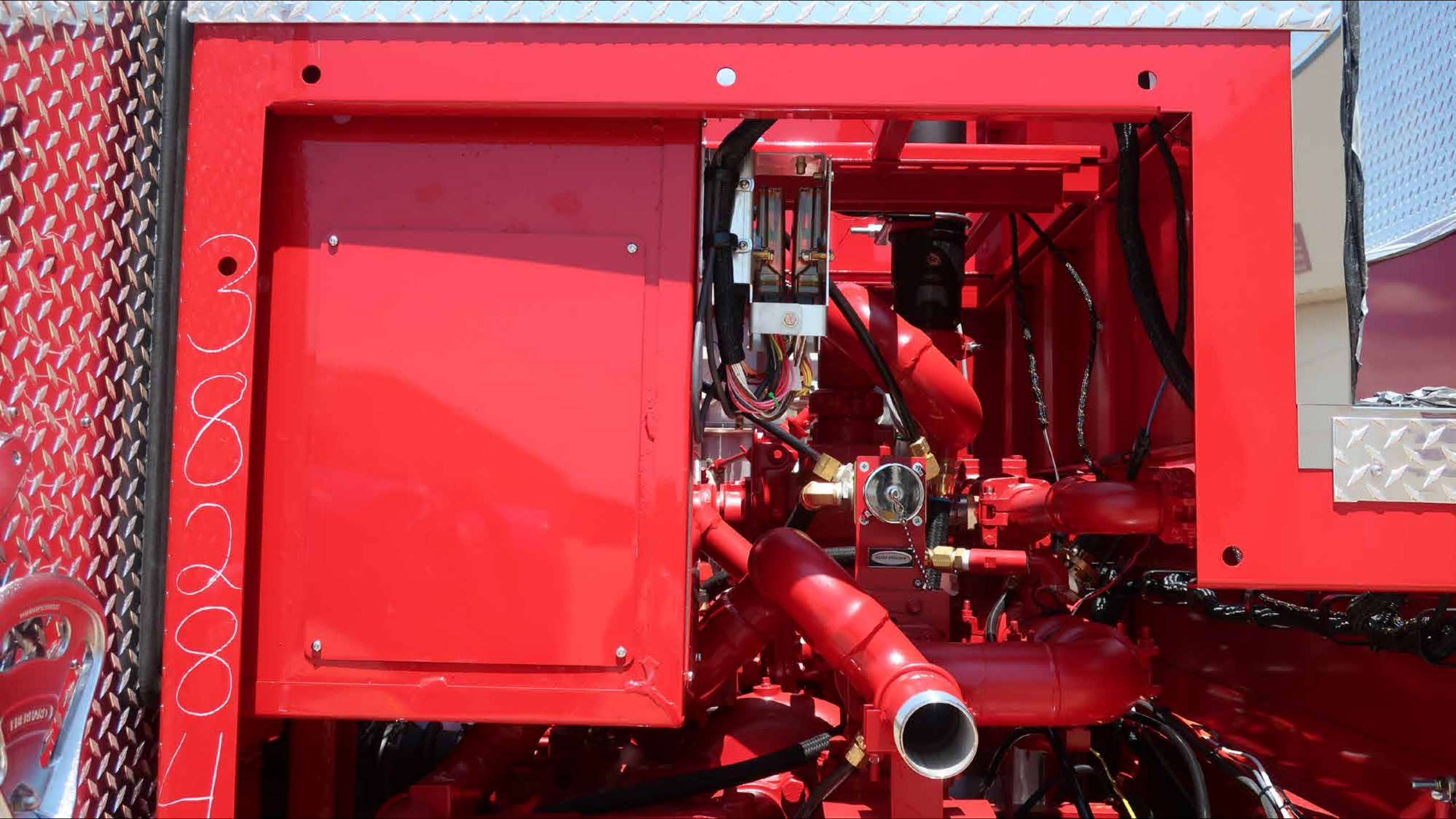






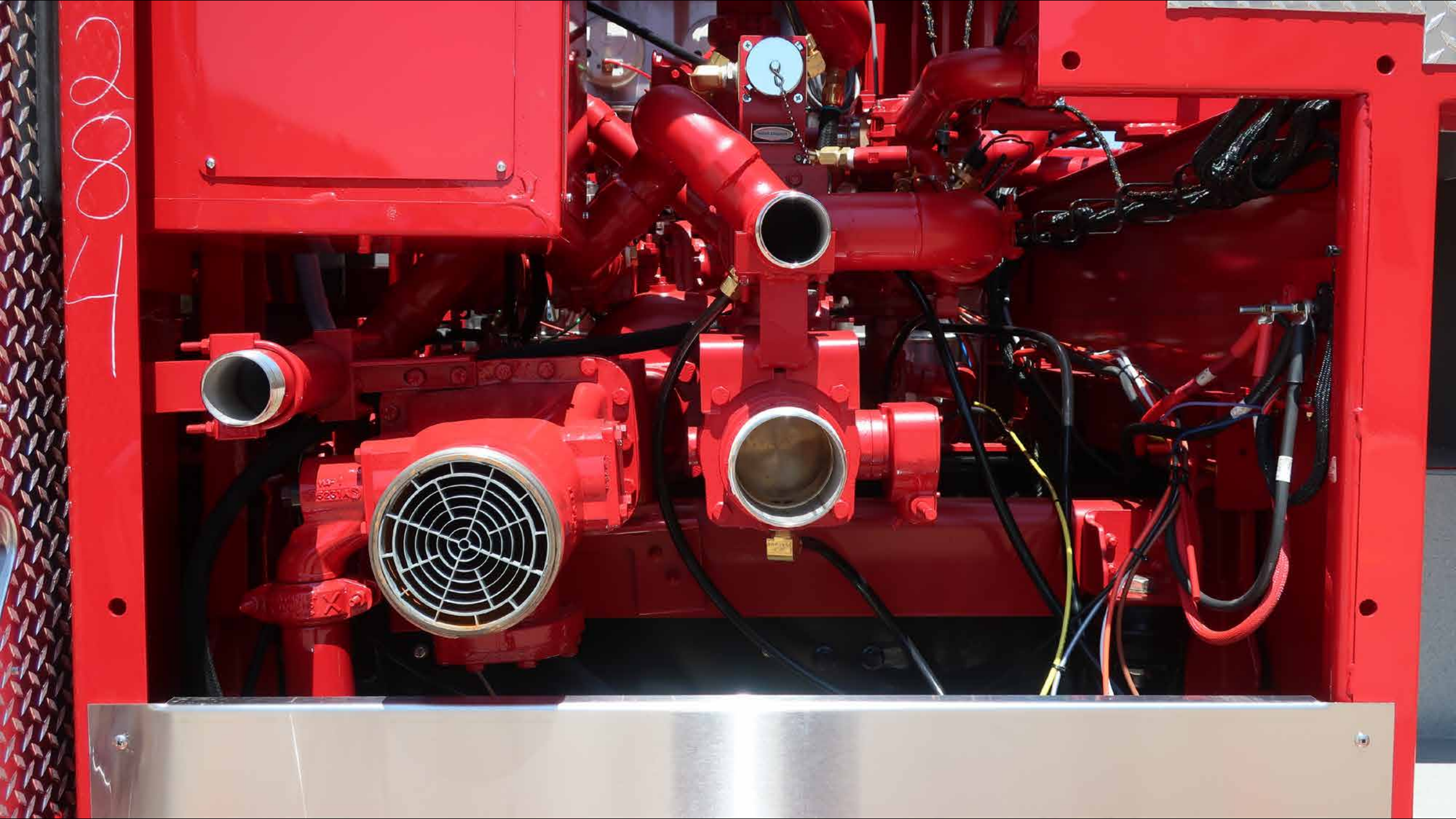


3000



4002003

1-002





PULL TO OPEN  
LARGE DIA. PASS.  
SIDE DISCHARGE

PULL TO OPEN  
NO. 4 PASSENGER  
SIDE DISCHARGE

PULL TO OPEN  
NO. 2 PASSENGER  
SIDE DISCHARGE

PULL TO OPEN  
2 1/2" CROSSLAY

PULL TO OPEN  
NO. 2 CROSSLAY





















284

Pierce P98

SRS

CAUTION

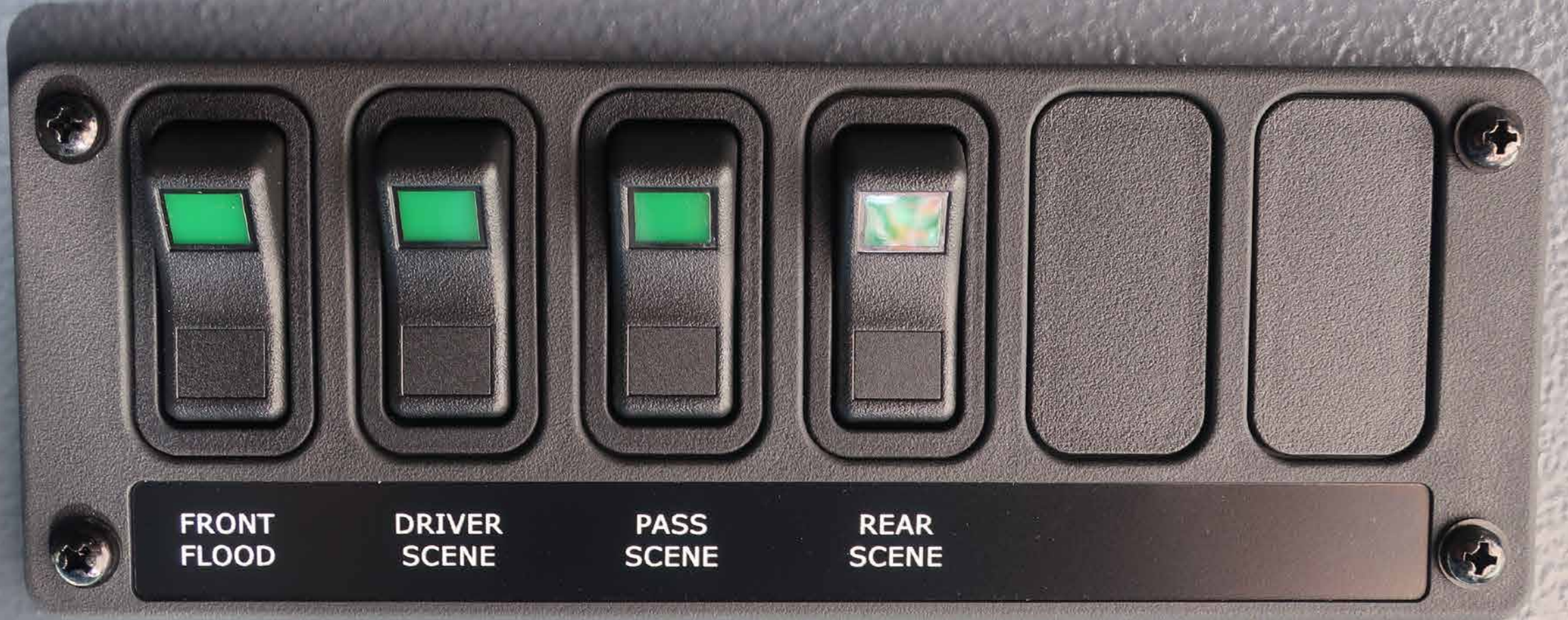
NOTICE  
PLEASE READ THE INSTRUCTIONS  
BEFORE USING THIS EQUIPMENT











FRONT  
FLOOD

DRIVER  
SCENE

PASS  
SCENE

REAR  
SCENE



Bluetooth

JENSEN  
HEAVY DUTY

NOAA

☀️  
⏻

MODE  
PAIR

ENTER  
INFO

↩️

⏪

+

⏮

⏭

⏸

BAND  
SCROLL

PS  
AS

⚙️

1

2

3

4

5

6

JHD12







**HUGHES FIRE EQUIPMENT**