

# Photo Album for Pierce Job 38289 Pascua Pueblo Fire Department, AZ Custom Velocity 100' Aerial

Wk 17 Production ending July 5, 2024

- The aerial continues assembly at the 41 plant.
- The aerial device has arrived and is in assembly at the 41 plant.



Pierce  
OFFLI





DISTRICT

DYNATECT

DEPT. 2









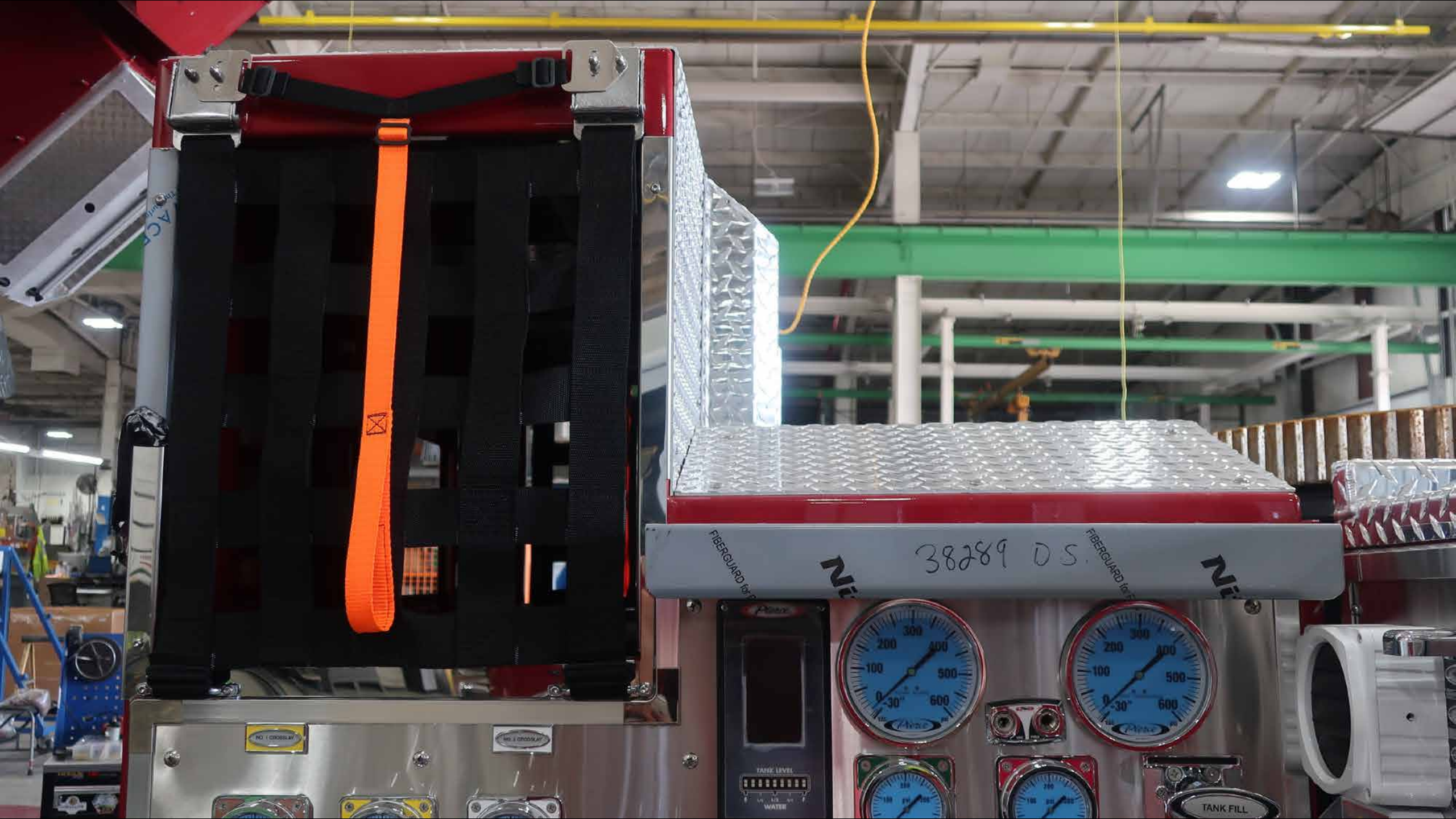












AGC

FIBERGUARD for P

NE

38289 DS

FIBERGUARD for P

NE

NO. 1 CROSSRAY

NO. 2 CROSSRAY

TANK LEVEL  
WATER



TANK FILL









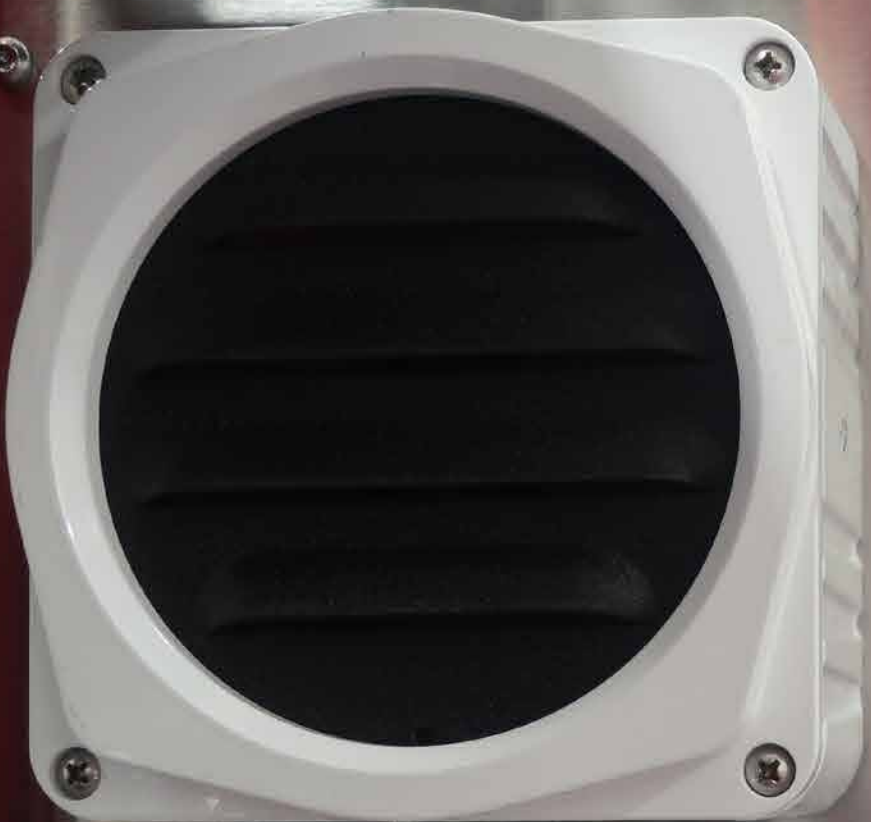
PRIMER  
FIRE PUMP

**WATEROUS**  
MODEL: 81960510 SERIAL NO: 151845  
DATE: JAN 0588 PART NO: 2-14  
CAPACITY: 2000 GPM AT 100 DISCH PSI  
HYDRO: 500 PSI MAX DISCH: 261 PSI

WARNING OPERATION  
DANGERS AND  
DANGER

**DANGER**  
WARNING  
OPERATION  
DANGERS AND  
DANGER





PANEL LIGHTS



DRIVER SIDE  
SCENE LIGHTS



PASSENGER SIDE  
SCENE LIGHTS



TIP LIGHTS



AIR HORN



OK TO PUMP





Pierce

TANK LEVEL

WATER

E 1/4 1/2 3/4 F

OK TO PUMP      THROTTLE READY

PRESSURE      RPM

MODE      PRESET

IDLE



VAC      PRESS



TANK FILL



TANK TO PUMP



RE-CIRCULATING LINE

OPEN

PRIMER







LARGE DIA. PASS.  
SIDE DISCHARGE



AERIAL  
DISCHARGE

VAC | PRES



FRONT DISCHARGE



NO. 1 CROSSLAY



NO. 2 CROSSLAY



PRIMER  
FIRE PUMP



PUSH  
TO  
PRIME

WARNING: HOT FLUID SYSTEM  
CAUTION: PRESSURE  
DO NOT OPERATE WITHOUT PROPER  
TRAINING



PRIMER  
FIRE PUMP

NO. 2 PASSENGER  
SIDE DISCHARGE

PRIMING INSTRUCTIONS  
FOR ENHANCED PRIMING  
PERFORMANCE, PUMP THROUGH AT 1000  
RPM WHILE PRIMING



NO. 1 DRIVER  
SIDE DISCHARGE



W/O OPEN  
ENGINE COOLER



NO. 3 DRIVER  
SIDE DISCHARGE

Two blue rectangular switches with black knobs and a 'Synchro' logo.

DRIVER SIDE  
AUX INLET

NO. 1 DRIVER  
SIDE DISCHARGE

NO. 3 DRIVER  
SIDE DISCHARGE

PUMP



NO. 1 DRIVER  
SIDE DISCHARGE

NO. 3 DRIVER  
SIDE DISCHARGE

**PUMP  
DRAIN**  
PULL TO DRAIN



**PUMP  
DRAIN**  
PULL TO DRAIN



DO NOT OPEN OR CLOSE  
UNDER PRESSURE

**CAUTION**  
PLACE CAB SHIFT IN NEUTRAL  
PUSH FOR ROAD  
PULL FOR PUMP

MANUAL  
PUMP SHIFT

PULL TO OPEN  
DRIVER SIDE  
AUX. INLET

PULL TO OPEN  
NO. 1 DRIVER  
SIDE DISCHARGE

PULL TO OPEN  
NO. 3 DRIVER  
SIDE DISCHARGE







**WATEROUS**

MODEL: 5100C220	SERIAL NO: 181845
DATE: JAN-2024	RATIO: 2.48
CAPACITY: 2200 GPM	AT 190 DISCH PSIG
HYDRO: 300 PSIG	MAX DISCH: 300 PSIG

**MINIMUM OPERATION  
MAINTENANCE  
SCHEDULE \***

- Visual inspection monthly
- Check for oil pressure
- Check for leaks
- Check for loose bolts
- Check for loose electrical connections
- Check for loose hoses
- Check for loose wires
- Check for loose ground
- Check for loose ground

\* See the manual for the operation schedule.

Check Oil - Change regularly  
Check Oil - Oil level  
Check Oil - Change regularly  
Check Oil - Change regularly  
Check Oil - Change regularly  
Check Oil - Change regularly  
Check Oil - Change regularly

DRIVER SIDE  
RISK 1845

**⚠ DANGER**

Caution: Hazard - Equipment is not intended for use by untrained personnel. Always use proper safety practices. Do not touch any moving parts. Do not use any tools to adjust or modify the equipment. Do not attempt to repair or maintain the equipment unless you are a qualified technician. Do not use the equipment if it is damaged or if there are any warning lights on the control panel. Do not use the equipment if there are any warning lights on the control panel. Do not use the equipment if there are any warning lights on the control panel.

**PULL TO OPEN**  
DRIVER SIDE  
RISK 1845



B2409A

2TON







**WARNING**

Read the instructions carefully and follow them exactly. Failure to do so may result in injury or death. Do not use the equipment for any purpose other than that intended. Do not use the equipment in any way that is not specified in the instructions. Do not use the equipment in any way that is not specified in the instructions. Do not use the equipment in any way that is not specified in the instructions.

LAND  
LESS





Pierce

LAMP  
LENS





34289 PS







FIRE

38289 P.S.

NO. 1 CHEVROLET

NO. 1 CHEVROLET



NO. 2 CROSSLAY

NO. 1 CROSSLAY







AERIAL  
DISCHARGE



AERIAL INLET





NO. 2 PASSENGER  
SIDE DISCHARGE



AERIAL  
DISCHARGE



LARGE DIA. PASS.  
SIDE DISCHARGE







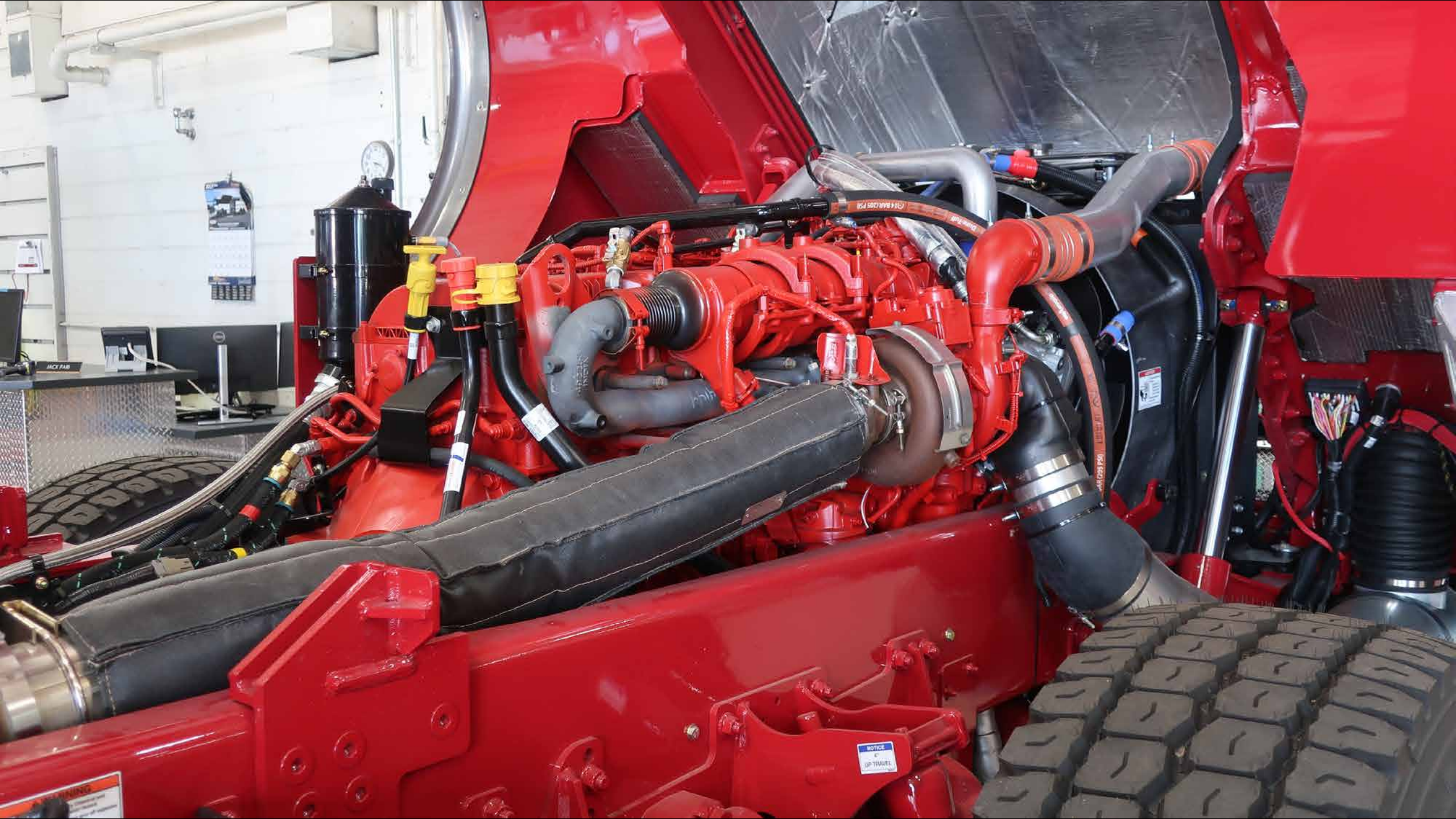




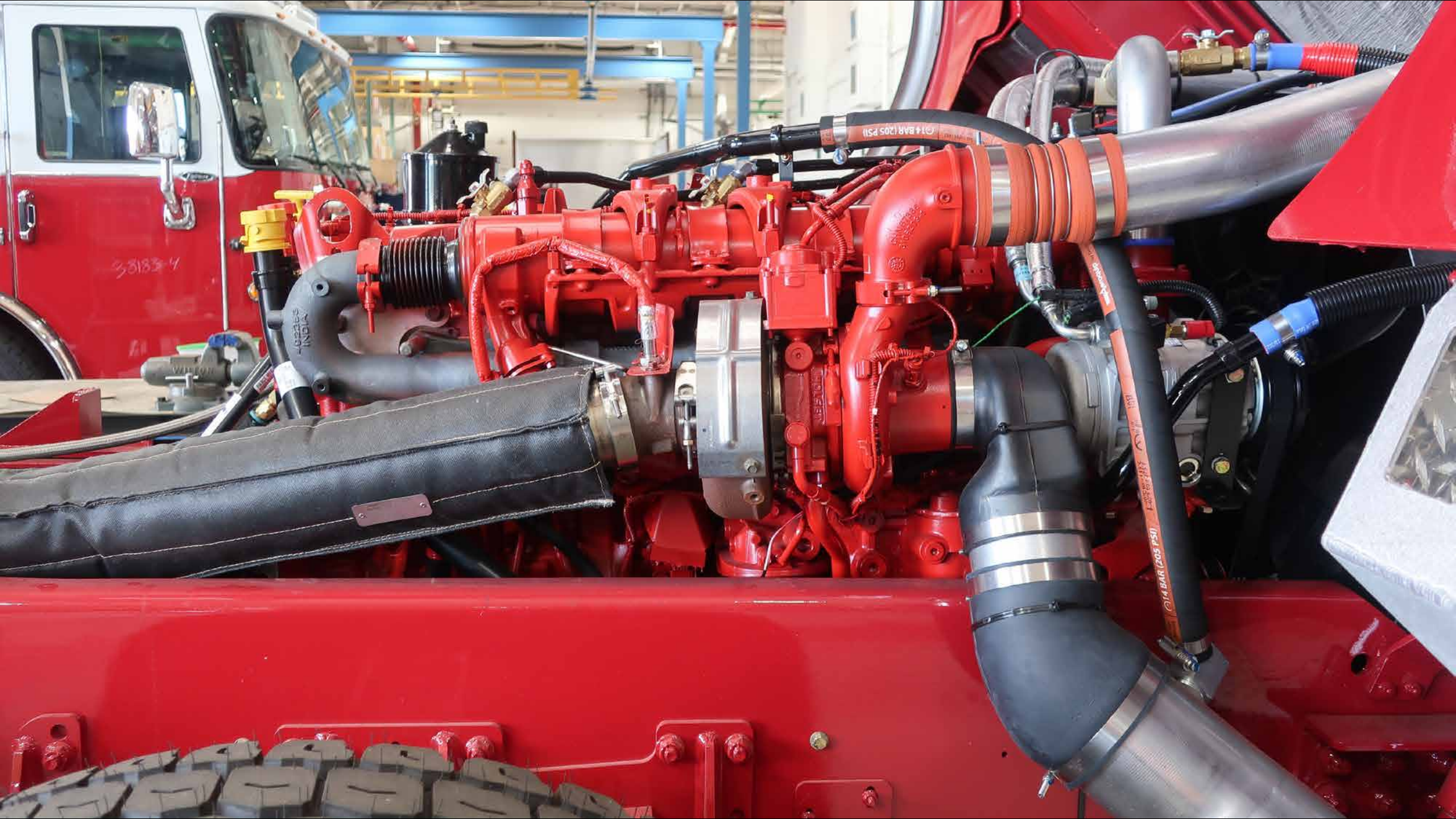












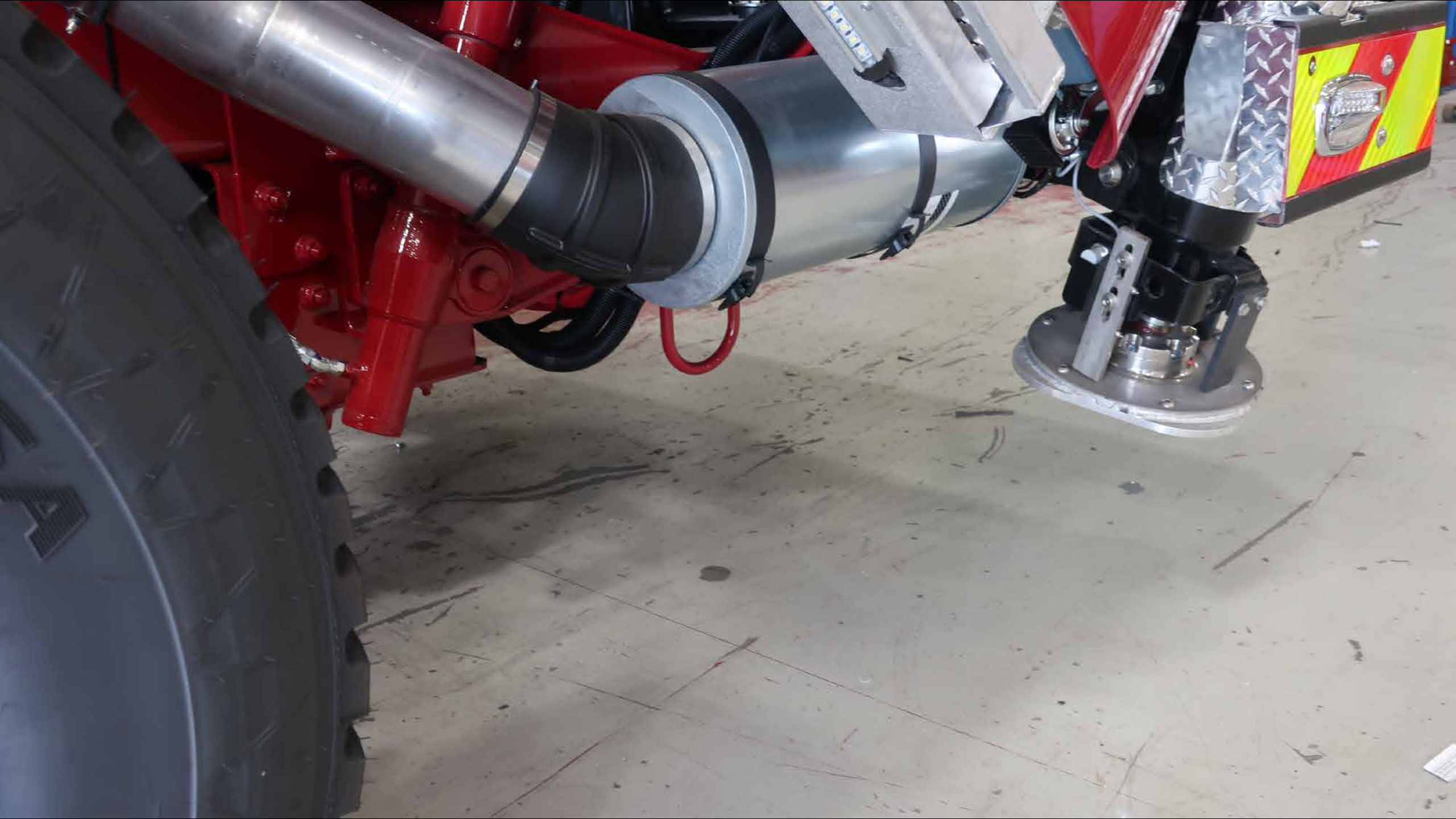
38183-4

INDIA

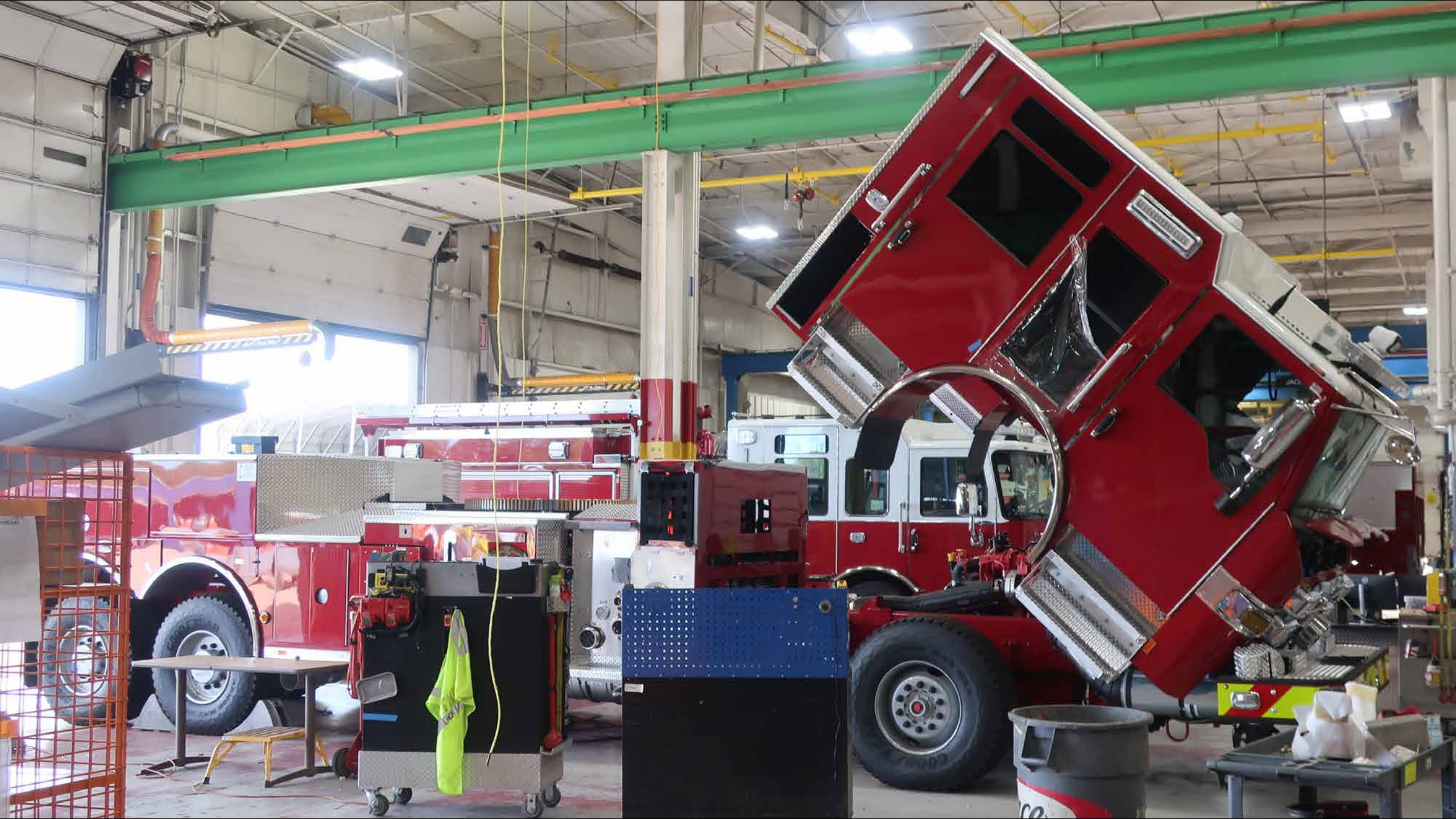
14 BAR (205 PSI)

14 BAR (205 PSI)













**VOLTERRA**  
ELECTRIC SERVICES

1000 West 1st Street  
Cincinnati, Ohio 45202













PUMPKIN106  
10/10/2019

1000#

JOB #: 38239  
JOB TYPE: LPRP  
DATE: 6-11-23  
TIME: 06:00 AM













**HUGHES FIRE EQUIPMENT**