

Photo Album for Pierce Job 38289 Pascua Pueblo Fire Department, AZ Custom Velocity 100' Aerial

Wk 5 Production ending April 12, 2024

- The cab has completed the paint process and has begun assembly at the Neenah plant.
- The raw frame rails are staged to begin assembly at the Neenah plant.
- The pump has begun assembly at the IPP plant.
- The body has completed weld operations and is staged at FTL to begin the paint process at the 41 plant.



GORBEL
1000

22289

32289

NOTICE
PLEASE DO NOT REMOVE THIS
OR ANY OTHER PARTS







SW
212

PUMPKIN402

FRAGILE
HANDLE
WITH CARE





B1115

CAR
BODY
BATCH 2016/2017
PWC 307111

3819

98283









B6030



CAUTION

10282E

BATTERY VOLTAGE





TRUCK
TECHNICAL SERVICE

R
N
D

ENGINE STOP
ENGINE START
BRAKE STOP
PUMP STOP
PUMP START

ENGINE STOP
ENGINE START
BRAKE STOP
PUMP STOP
PUMP START

ENGINE STOP
ENGINE START
BRAKE STOP
PUMP STOP
PUMP START

ENGINE STOP
ENGINE START
BRAKE STOP
PUMP STOP
PUMP START

WARNING



Emergency Stop (Red button with triangle icon)
START (Red button)
CAUTION (Red button)

E-M (Toggle switch)
OFF (Toggle switch)
PANEL (Toggle switch)

ULTRA LOW SULFUR
DIESEL FUEL ONLY



ALLISON
TRANSMISSION

R MODE
N ▲
D ▼



ENG BRK ON/OFF ENG BRK LO/PHECVHI MIRROR HEAT FRONT WHEEL LOCK

AERIAL MASTER STABILIZER CAMERA DS CORNERING LIGHT PS CORNERING LIGHT

PUMP ENGAGED OK TO PUMP

ROAD TO PUMP
1. STOP TRUCK
2. SHIFT TRUCK TRANSMISSION TO NEUTRAL
3. SET PARKING BRAKE
4. THROW LEVER DOWN
5. ENGAGE TRUCK TRANSMISSION INTO DRIVE

PUMP SHIFT

PUMP TO ROAD
1. SHIFT TRUCK TRANSMISSION TO NEUTRAL
2. THROW LEVER UP
3. RELEASE PARKING BRAKE APPLY SERVICE BRAKE
4. ENGAGE TRUCK TRANSMISSION

CAUTION
OPERATING THE PUMP WHILE THE TRUCK IS IN DRIVE OR WHILE THE TRUCK IS MOVING CAN CAUSE SEVERE DAMAGE TO THE PUMP AND TRANSMISSION.

WARNING
TO PREVENT PERSONAL INJURY OR DEATH, ALWAYS WEAR YOUR SEATBELT AND SAFETY BELT. ALWAYS WEAR YOUR SAFETY BELT WHEN YOU ARE DRIVING.



ISON
MISSION

ROTOR

MODE



ENG BRK
ON/OFF

ENG BRK
LO/MED/HI

MIRROR
HEAT

FRONT
WHEEL
LOCK

PUMP
ENGAGED

CAUTION
DIS...

IG BRK /MED/HI

MIRROR HEAT

FRONT WHEEL LOCK



AERIAL MASTER



STABILIZER CAMERA



DS CORNERING LIGHT



PS CORNERING LIGHT



PUMP ENGAGED



OK TO PUMP

ROAD TO PUMP

1. STOP TRUCK
2. SHIFT TRUCK TRANSMISSION TO NEUTRAL.
3. SET PARKING BRAKE.
4. THROW LEVER DOWN.
5. ENGAGE TRUCK TRANSMISSION INTO DRIVE.



PUMP TO ROAD

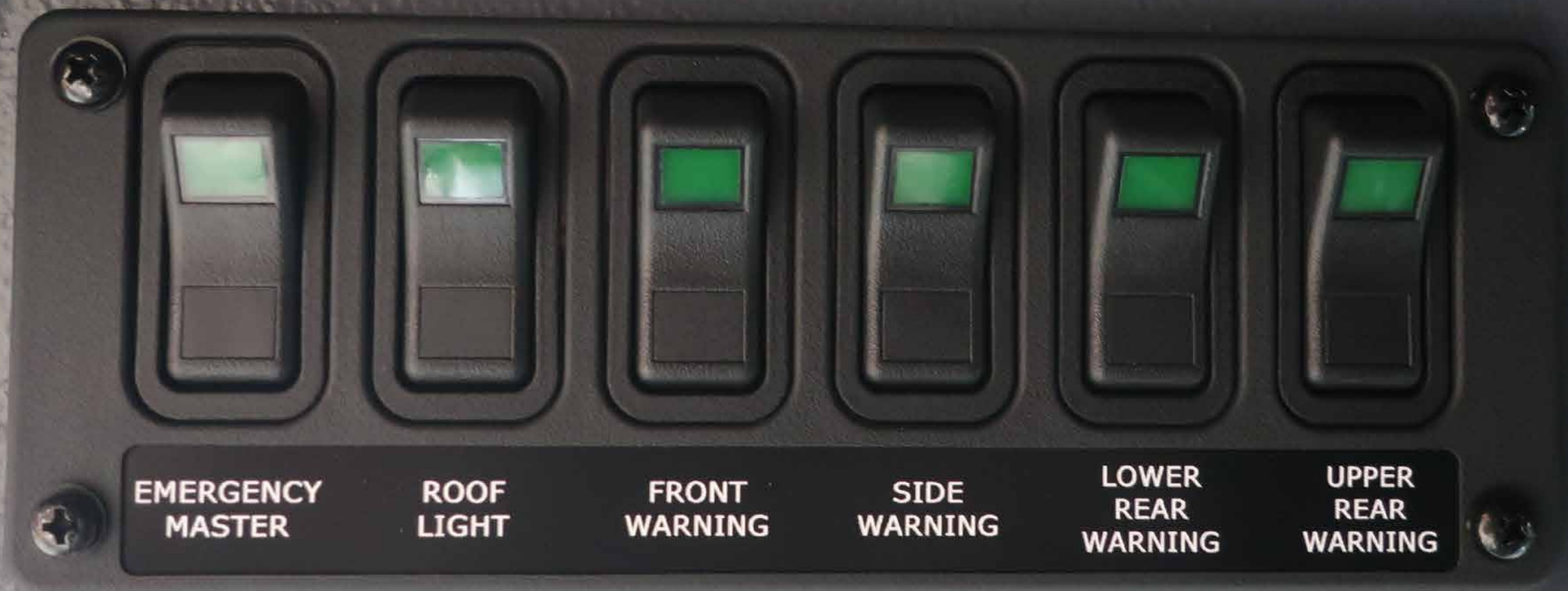
1. SHIFT TRUCK TRANSMISSION TO NEUTRAL.
2. THROW LEVER UP.
3. RELEASE PARKING BRAKE APPLY SERVICE BRAKE.
4. ENGAGE TRUCK TRANSMISSION.

CAUTION
 DISENGAGE RETARDER WHEN VEHICLE IS ON WET OR SLIPPERY SURFACES.



WARNING
 ALWAYS engage Parking Brake AND run engine when using Front Wheel Lock.





**EMERGENCY
MASTER**

**ROOF
LIGHT**

**FRONT
WARNING**

**SIDE
WARNING**

**LOWER
REAR
WARNING**

**UPPER
REAR
WARNING**



OPTICOM

HIGH
BEAM
FLASH

ELECTRNC
SIREN

AIR
HORN



**FRONT
SCENE**

**DRIVER
SCENE**

**PASS
SCENE**

**REAR
SCENE**

**LOAD
MANAGER**





SW
212

PUMPKIN402

BRVDTM
LUNVH
ETD551









ONE
SLOT
SATC/TERRING
PNO. 002114

MFC/CATC

9828W



CAB
18136
BATCH 2269084
#NO 100Y118

Quality
policy
Exceeding customer
expectations through
continuous improvement







38289

CAB 30000
P.O. 30000



58 1000





CAB
3118
BATCH 22885003
P.W.G. 30GT1318

38

ing Customer
Working through
about improvements

EXIT





283





Bluetooth
ENTER INFO
K H
PG AS
1 2 3 4 5 6

VIEW
VIEW
VIEW
VIEW

VIEW
VIEW
VIEW
VIEW





Bluetooth

JENSEN
HEAVY DUTY

NOAA



MODE
PAIR



BAND
SCROLL

1

2

3

4

5

6

ENTER
INFO



PS
AS



JH012



**FRONT
SCENE**

**DRIVER
SCENE**

**PASS
SCENE**

**REAR
SCENE**



ON

OFF

AUX



FLASH

1

2

3

WHELEN®



POWER

MAN 2

HF

T1

MAN 1

T2

RAD

MIC VOL

T3

MAN

HORN

SPEAKERS

1

2

RAD

WHEEL



AIR PORT


AIR PORT

SIPEN BRAKE

AIR HORN



GENERIC



SIREN BRAKE

AIR HORN

USB PORT

PD 45W

QC 18W

KUSSMAUL

USB PORT

PD 45W

QC 18W

KUSSMAUL





38191

38715

39770

38733

4037701

38289

38392-02

41250

39481

39731

38470





38191

38733

38289

39731

39481

38470



38715

38770

39755

38733

38231

40377-01

38191

38598-02

41260

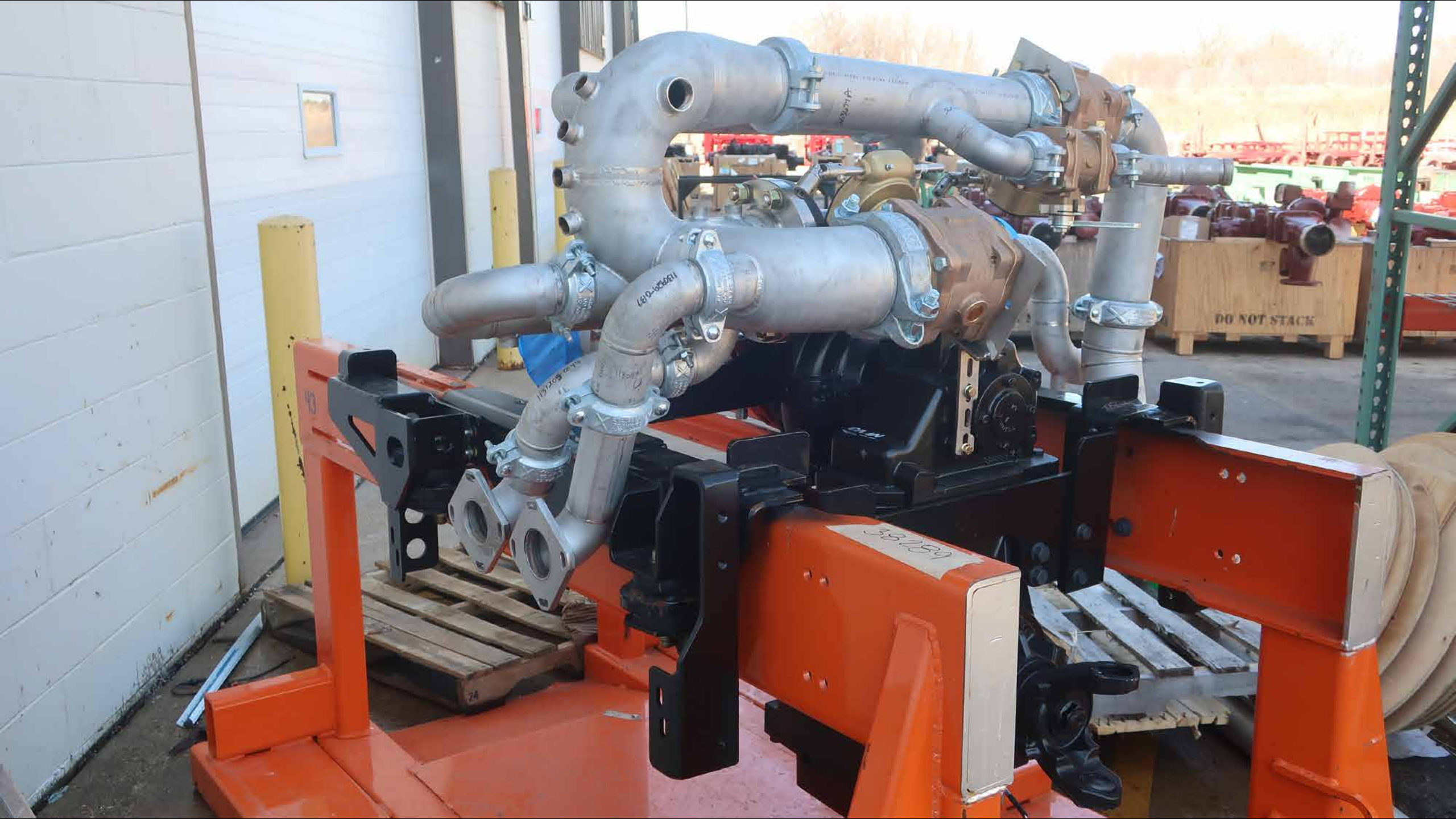
39481

38289

39131

38470

40795

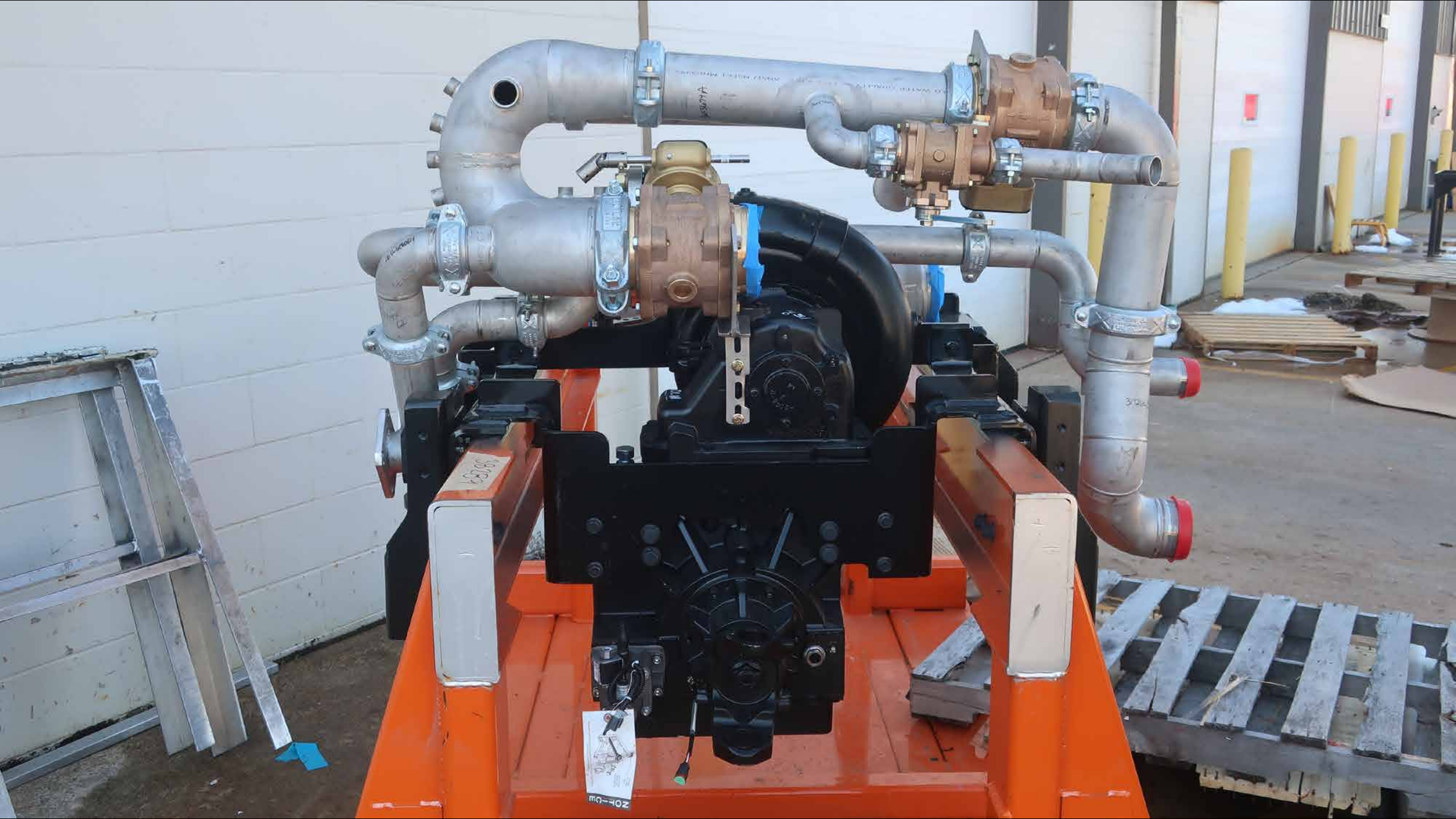


DO NOT STACK

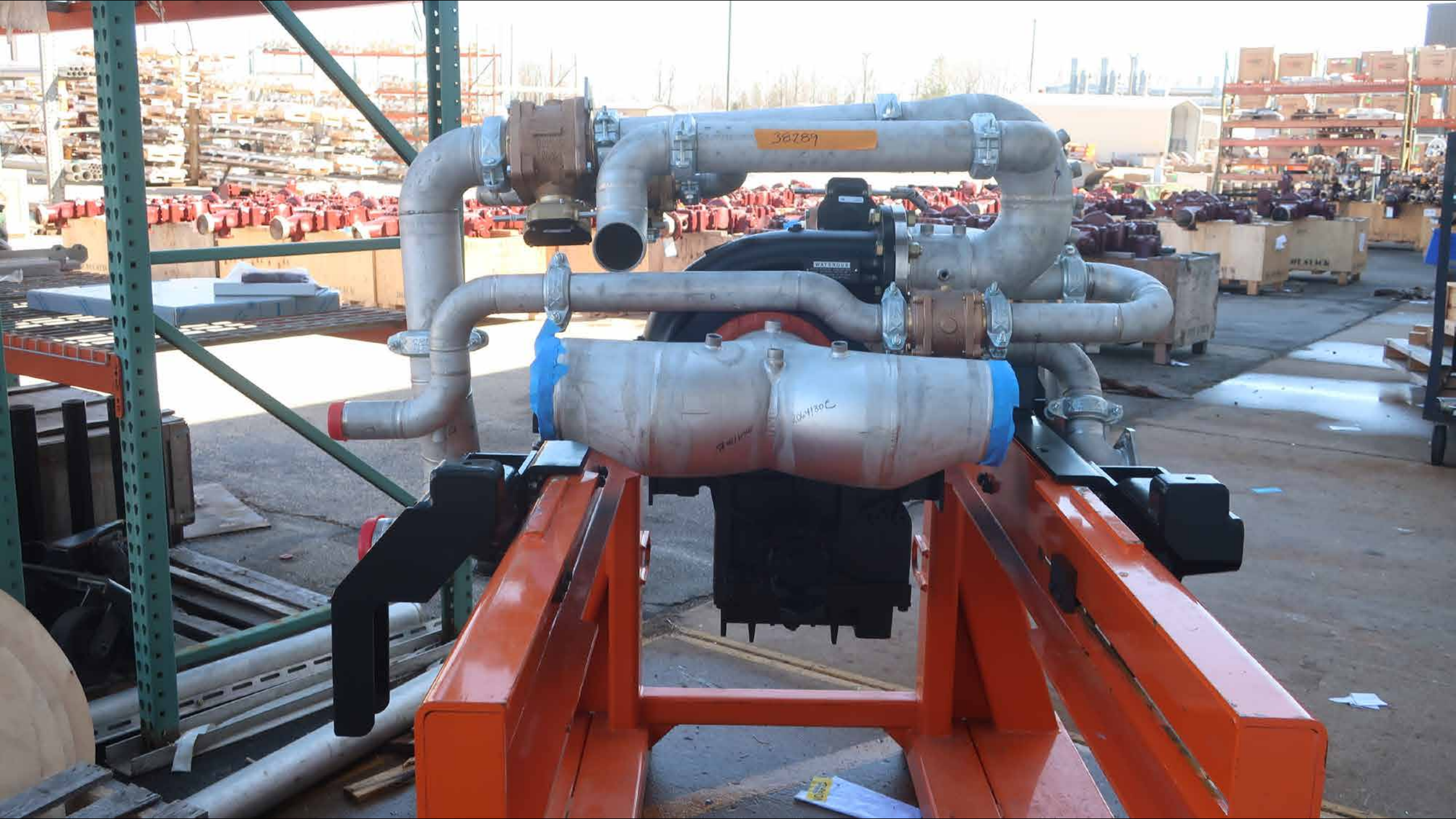
58-250

1610-00001

117208







36789

204130C



38289

WATEROUS

1204/30C

1204/30C

NOT STACK





38289

38289

The Original Look
Indian
MOTORCYCLES
Zedox Easyriders
ROADWEAR











HUGHES FIRE EQUIPMENT