

Photo Album for Pierce Job 38289 Pascua Pueblo Fire Department, AZ Custom Velocity 100' Aerial

Wk 6 Production ending April 19, 2024

- The cab continues assembly at the Neenah plant.
- The chassis has begun assembly at the Neenah plant.
- The pump has completed the paint process and continues assembly at the IPP plant.
- The torque box has arrived and is staged to begin assembly at the IPP plant.
- The body is staged to begin the paint process at the 41 plant.





38289







ITEM NO 38289
DESCRIPTION
QUANTITY
UNIT
DATE
BY
REVISIONS
APPROVED
DATE

NOTICE
FRONTAL IMPACT & 40%
SIDE ROLL PROTECTION

38289

18261









CAUTION
WARNING
DO NOT
OPERATE
VEHICLE
WITH
THIS
WARNING
LABEL
REMOVED
OR
DAMAGED
OR
OBSOLETE
OR
ILLEGIBLE
OR
UNREADABLE
OR
UNRECOGNIZABLE
OR
UNUSABLE
OR
UNAVAILABLE
OR
UNOBTAINABLE
OR
UNRELIABLE
OR
UNSAFE
OR
UNLAWFUL
OR
UNETHICAL
OR
UNMORAL
OR
UNREASONABLE
OR
UNNECESSARY
OR
UNWARRANTED
OR
UNDESIRABLE
OR
UNACCEPTABLE
OR
UNSATISFACTORY
OR
UNREASONABLE
OR
UNLAWFUL
OR
UNETHICAL
OR
UNMORAL
OR
UNREASONABLE
OR
UNNECESSARY
OR
UNWARRANTED
OR
UNDESIRABLE
OR
UNACCEPTABLE

10282E

BATTERY VOLTAGE
12V
10 11 12 13 14 15 16 17 18 19 20 21 22 23 24 25 26 27 28 29 30 31 32 33 34 35 36 37 38 39 40 41 42 43 44 45 46 47 48 49 50 51 52 53 54 55 56 57 58 59 60 61 62 63 64 65 66 67 68 69 70 71 72 73 74 75 76 77 78 79 80 81 82 83 84 85 86 87 88 89 90 91 92 93 94 95 96 97 98 99 100











ALISON TRANSMISSION

RC-1-205

R MODE

N

D

ENG BRK ON/OFF

ENG BRK LO/MED/HI

MIRROR HEAT

FRONT WHEEL LOCK

AERIAL MASTER

STABILIZER CAMERA

DS CORNERING LIGHT

PS CORNERING LIGHT

ROAD TO PUMP

1. STOP TRUCK
2. SHIFT TRUCK TRANSMISSION TO NEUTRAL
3. SET PARKING BRAKE
4. THROW LEVER DOWN
5. ENGAGE TRUCK TRANSMISSION INTO DRIVE

PUMP SHIFT

PUMP TO ROAD

1. SHIFT TRUCK TRANSMISSION TO NEUTRAL
2. THROW LEVER UP
3. RELEASE PARKING BRAKE APPLY SERVICE BRAKE
4. ENGAGE TRUCK TRANSMISSION

CAUTION

STABILIZER SYSTEMS
 WATER RESISTANT USE IN WET
 OR SLIPPERY SURFACES.

WARNING

Always engage Parking Brake AND
 Front Wheel Lock when using Stabilizer.



ALPINE
STEREO

SWITCH POSITION

R MODE

N

D

ENG BRK ON/OFF

ENG BRK LO/MED/HI

MIRROR HEAT

ISON
mission

NON-ZON

MODE



ENG BRK
ON/OFF

ENG BRK
LO/MED/HI

MIRROR
HEAT

FRONT
WHEEL
LOCK

PUMP
ENGAGE

CAUTION

DISENGAGE
WHEEL

LEFT MIRROR CONTROLS RIGHT



AERIAL MASTER



STABILIZER CAMERA



DS CORNERING LIGHT



PS CORNERING LIGHT



FRONT WHEEL LOCK



PUMP ENGAGED



OK TO PUMP

ROAD TO PUMP

1. STOP TRUCK
2. SHIFT TRUCK TRANSMISSION TO NEUTRAL.
3. SET PARKING BRAKE.
4. THROW LEVER DOWN.
5. ENGAGE TRUCK TRANSMISSION INTO DRIVE.



PUMP TO ROAD

1. SHIFT TRUCK TRANSMISSION TO NEUTRAL.
2. THROW LEVER UP.
3. RELEASE PARKING BRAKE APPLY SERVICE BRAKE.
4. ENGAGE TRUCK TRANSMISSION.

CAUTION
 DISENGAGE RETARDER WHEN VEHICLE IS ON WET OR SLIPPERY SURFACES.
91-0208



WARNING
 ALWAYS engage Parking Brake before run engine when using Front Wheel Lock.

EMERGENCY MASTER ROOF LIGHT FRONT WARNING SIDE WARNING LOWER REAR WARNING UPPER REAR WARNING

SPEED HIGH LOW DIMMING



**EMERGENCY
MASTER**

**ROOF
LIGHT**

**FRONT
WARNING**

**SIDE
WARNING**

**LOWER
REAR
WARNING**

**UPPER
REAR
WARNING**



OPTICOM

**HIGH
BEAM
FLASH**

**ELECTRNC
SIREN**

**AIR
HORN**



**FRONT
SCENE**

**DRIVER
SCENE**

**PASS
SCENE**

**REAR
SCENE**

**LOAD
MANAGER**

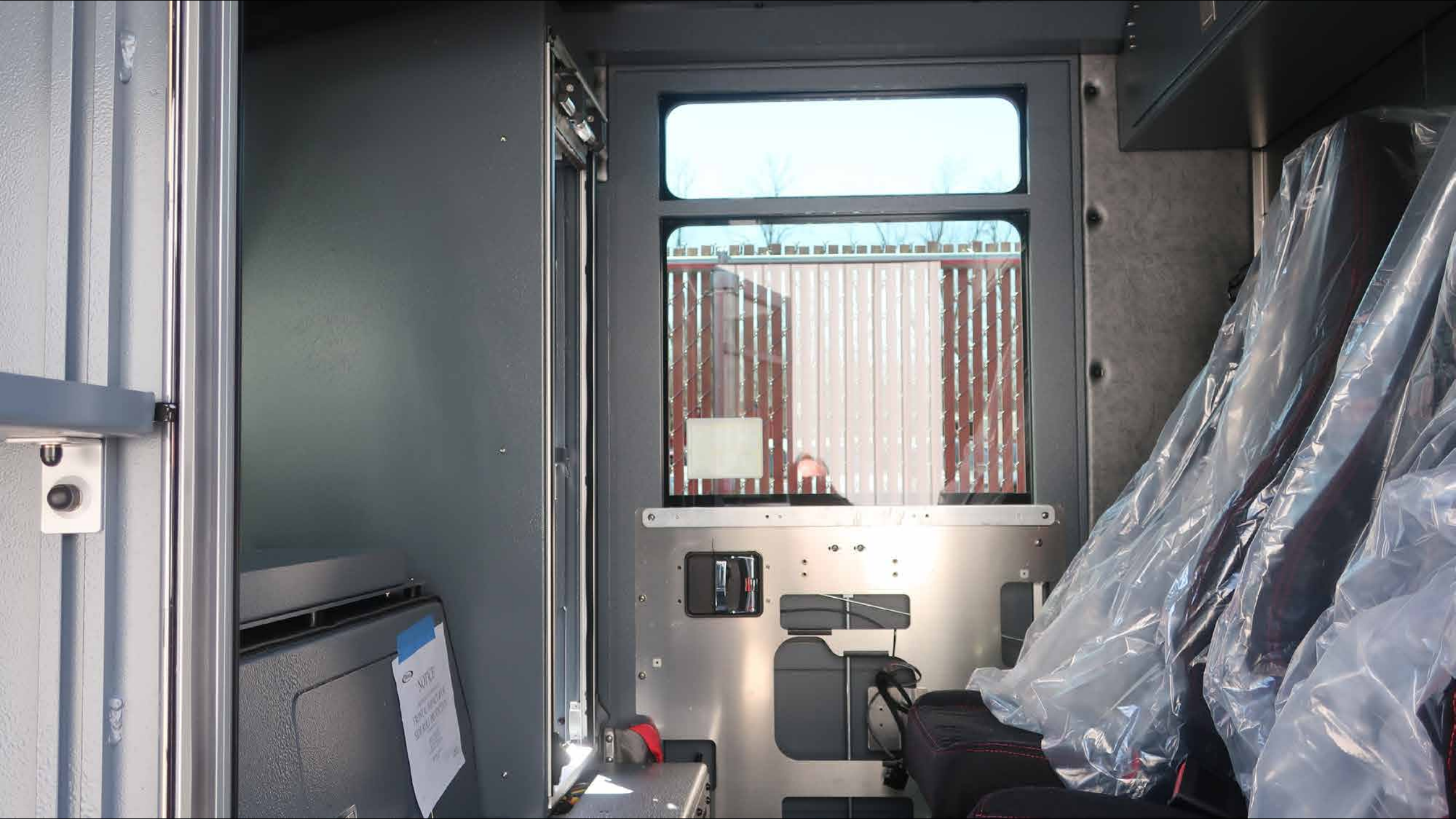


38289









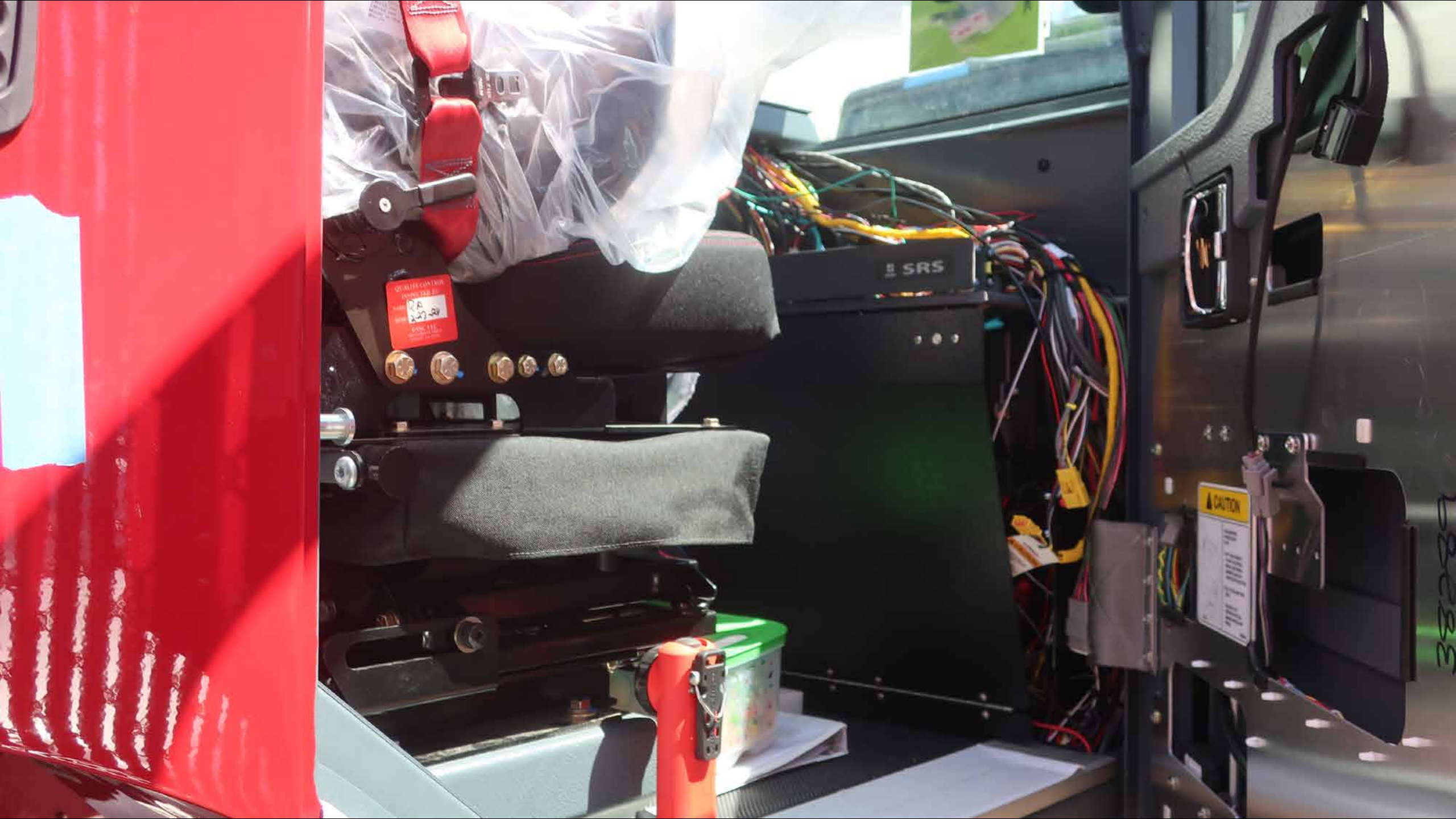
WIPAC
PAPER AND PAPER
STOCKS AND SUPPLIES


















SWAY BRAKE

AIR HORN

GOLDFINGER

A close-up photograph of a control panel on a boat. The panel is black with a textured surface. It features two circular buttons with silver-colored rings. The top button is labeled 'SIREN BRAKE' and the bottom button is labeled 'AIR HORN'. To the left of the panel is a blue textured surface, possibly part of the boat's interior or a cover. The background shows a blurred view of the boat's exterior and the sky.

SIREN BRAKE

AIR HORN



JENSEN
HEAVY DUTY

Bluetooth

NOAA

ENTER
INFO

↶ ↷

PS
AS

⚙

JH012

1 2 3 4 5 6

⏻ ⏪ ⏩ ⏴

⏵

⏻ ⏴

⏵

⏻ ⏴

⏵

Bluetooth

JENSEN
HEAVY DUTY

NOAA



MODE
PAIR



BAND
SCROLL



1

2

3

4

5

6

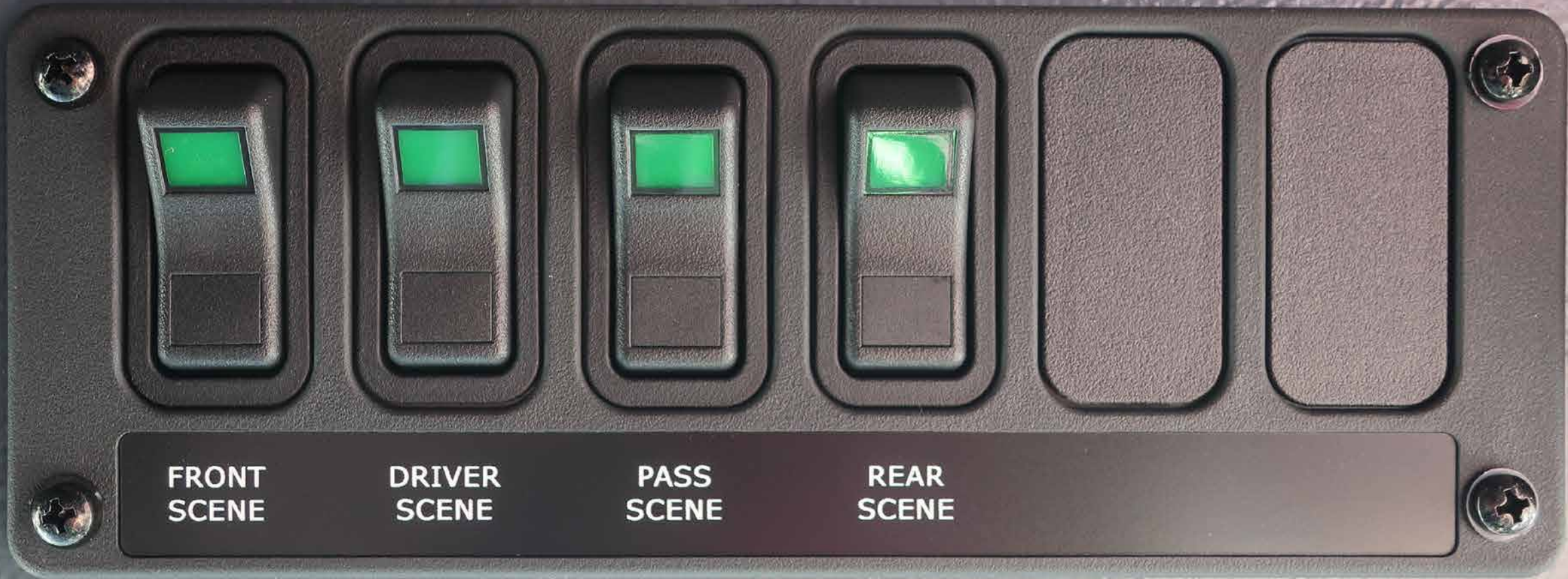
ENTER
INFO



PS
AS



JH012



**FRONT
SCENE**

**DRIVER
SCENE**

**PASS
SCENE**

**REAR
SCENE**



ON

OFF

AUX

WHELEN®

FLASH

1

2

3



POWER



SPEAKERS

1 2

MAN 2

HF

T1

MAN 1

T2

RAD

T3

MAN

HORN

RAD

MIC VOL

WHEEL







STATION 2
DO SOME SALLY

38289

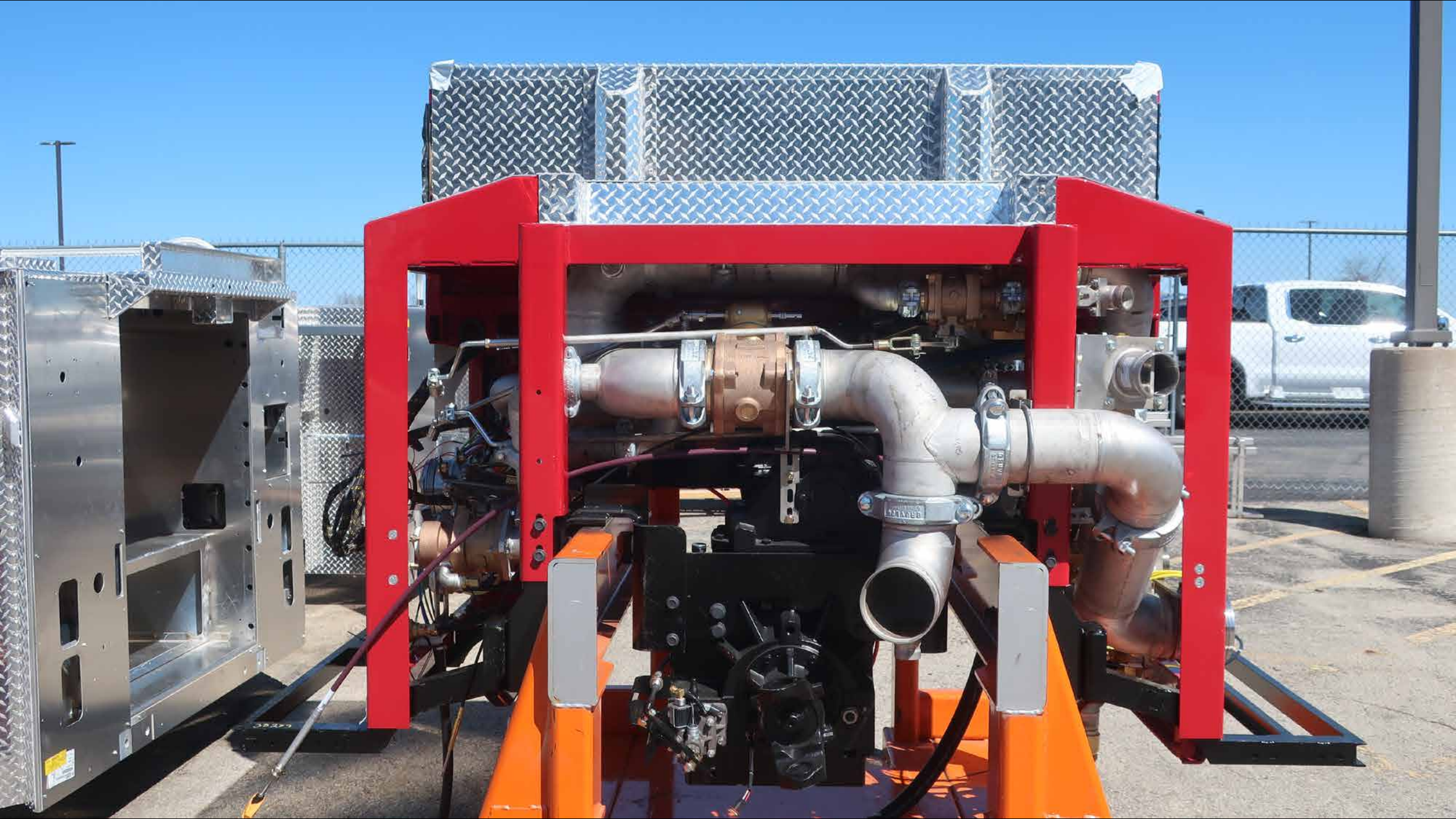


38289

382

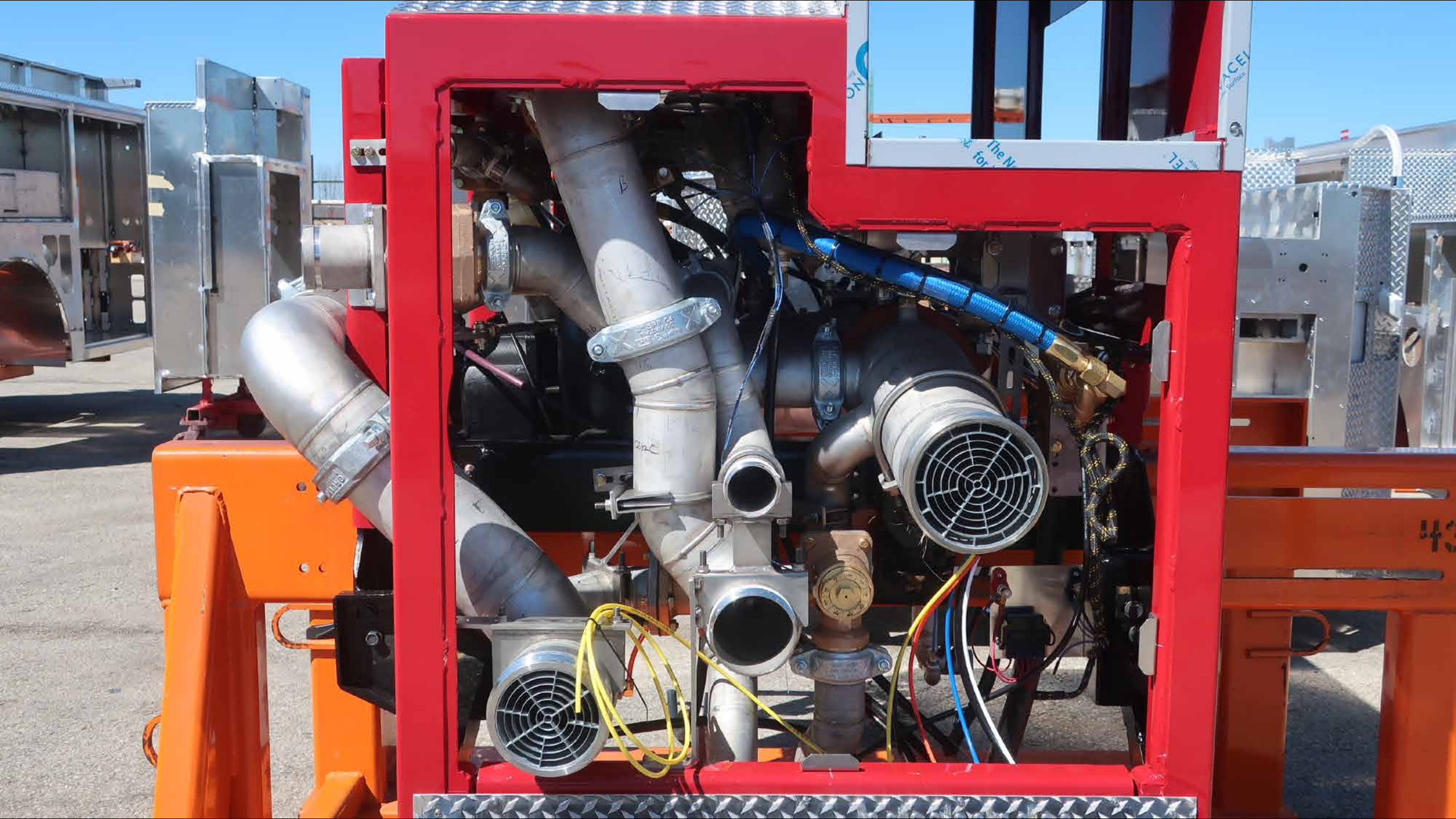
TRUCKS

TRUCK SCHOOL









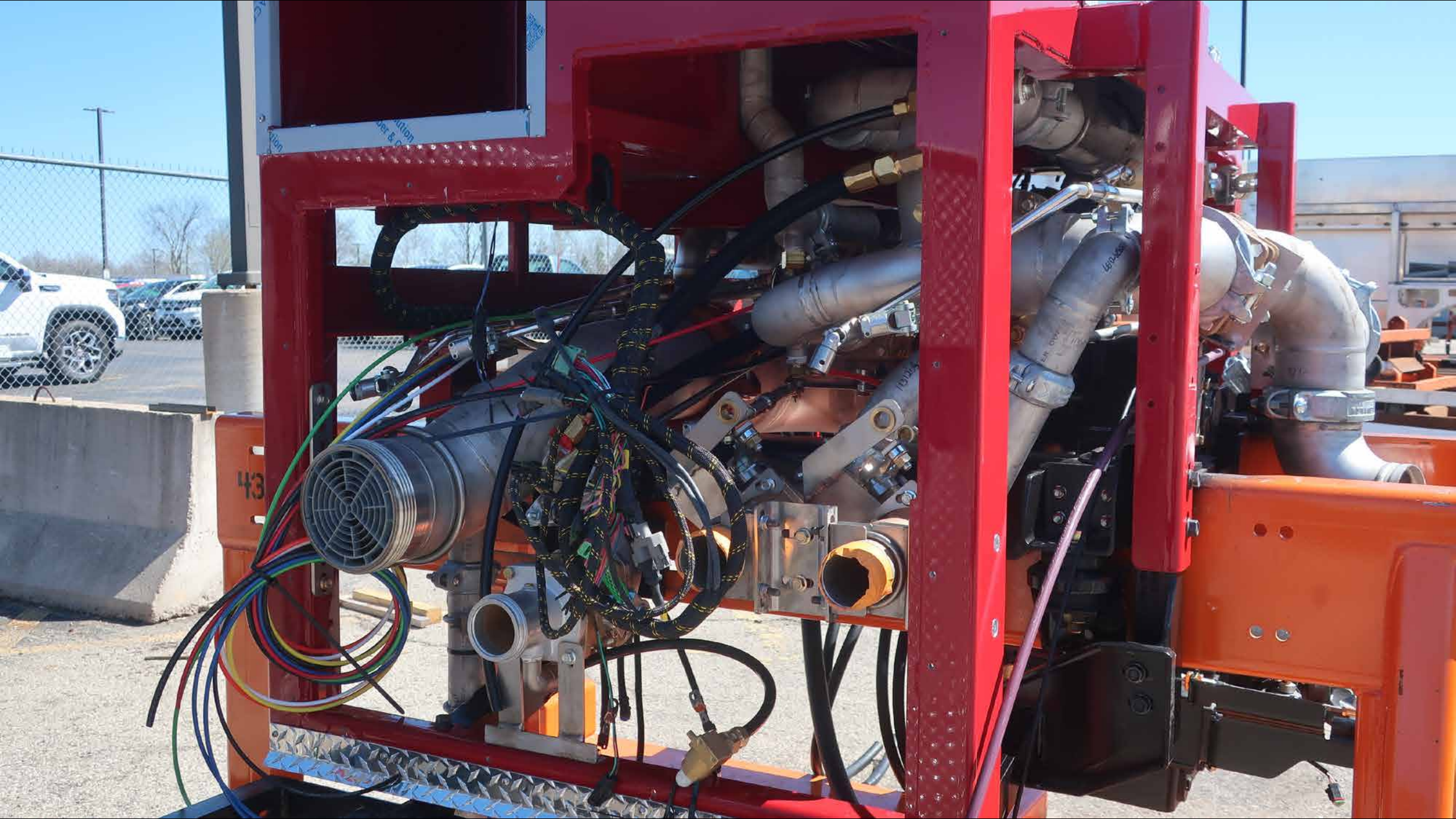






43







38289







38209







Pin 100





38289

1004 287777.001



38289

38289

38289











T-1

ENCLOSURE AREA
158 158

Pierce





HUGHES FIRE EQUIPMENT