

# Photo Album for Pierce Job 38289 Pascua Pueblo Fire Department, AZ Custom Velocity 100' Aerial

## Wk 7 Production ending April 26, 2024

- The cab and pump have been mounted to the chassis and the aerial continues assembly at the IPP plant.
- The torque box has begun assembly and is staged to be mounted to the chassis at the IPP plant.
- The body has completed the paint process and has begun assembly at the 41 plant.



3B289









EXIT

CAUTION

AIRBRAKES  
LOCKED AT 3

ELSA

BAY 8  
100JJ



EXIT

FOTON



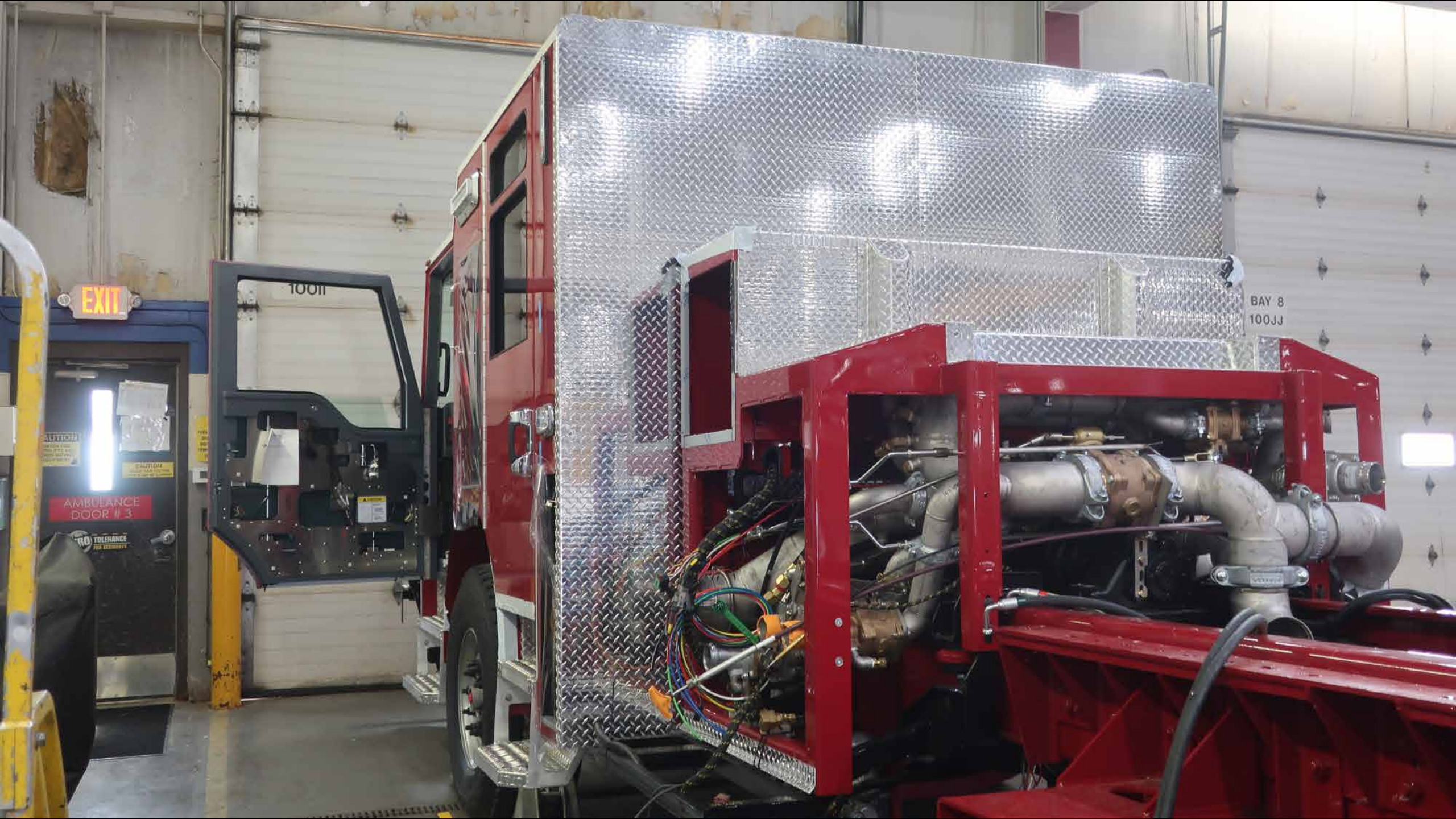


FASTENAL

Pierce

10011





EXIT

10011

AMBULANCE DOOR # 3

BAY 8  
100JJ





**CAUTION**

WARNING: High Voltage  
Do not touch the battery terminals or the battery pack. The battery pack is a high voltage source and can cause a fire or explosion. The battery pack is a high voltage source and can cause a fire or explosion. The battery pack is a high voltage source and can cause a fire or explosion.

**BATTERY VOLTAGE**

14 12 10 8 6 4 2 0

0 2 4 6 8 10 12 14

**WY-ALLEN**

38289









ATLSON

ENGINE ON/OFF

ENGINE STOP/START

WASHER WASH

PARKING BRAKE LOCK

PUMP

PUMP TO PUMP

PUMP TO FORWARD

PUMP TO REVERSE

CAUTION

WARNING

WARNING

WARNING

WARNING









SPOTTER WHEN...  
Key Points:  
1. If you cannot see your spotter, IMMEDIATELY STOP.  
2. If in sight or congested area, you may need an additional spotter.  
3. Always follow the signals of your spotter, without a spotter, you may not understand the signals.  
Pierce

ULTRA LOW SULFUR DIESEL FUEL ONLY





Allison  
MODE  
R  
N  
D

ENG BRK ON/OFF  
ENG BRK LO/MED/HI  
MIRROR HEAT  
FRONT WHEEL LOCK

AERIAL MASTER  
STABILIZER CAMERA  
PS TURNING LIGHT

**ROAD TO PUMP**  
1. STOP TRUCK  
2. SHIFT TRUCK TRANSMISSION TO NEUTRAL.  
3. SET PARKING BRAKE.  
4. THROW LEVER DOWN.  
5. ENGAGE TRUCK TRANSMISSION & P/D DRIVE.

**PUMP TO ROAD**  
1. SHIFT TRUCK TRANSMISSION TO NEUTRAL.  
2. THROW LEVER UP.  
3. RELEASE PARKING BRAKE APPLY SERVICE BRAKE.  
4. ENGAGE TRUCK TRANSMISSION.

**CAUTION**  
DO NOT OPERATE TRUCK WHEN VEHICLE IS ON WET OR SLIPPERY SURFACES.

**WARNING**  
Always engage Parking Brake AND Top Chassis when using Front Wheel Lock.



 **Allison**  
TRANSMISSION



ENG BRK  
ON/OFF



ALLISON  
transmission



ENG BRK ON/OFF	ENG BRK LO/MED/HI	MIRROR HEAT	FRONT WHEEL LOCK		
-------------------	----------------------	----------------	------------------------	--	--

PUMP  
ENGAGED

**CAUTION**  
DISENGAGE RETARDER  
WHEN VEHICLE IS STOPPED







AERIAL MASTER

STABILIZER CAMERA

DS CORNERING LIGHT

PS CORNERING LIGHT



PUMP ENGAGED

OK TO PUMP

ROAD TO PUMP

1. STOP TRUCK
2. SHIFT TRUCK TRANSMISSION TO NEUTRAL.
3. SET PARKING BRAKE.
4. THROW LEVER DOWN.
5. ENGAGE TRUCK TRANSMISSION INTO DRIVE.

PUMP TO ROAD

1. SHIFT TRUCK TRANSMISSION TO NEUTRAL.
2. THROW LEVER UP.
3. RELEASE PARKING BRAKE APPLY SERVICE BRAKE.
4. ENGAGE TRUCK TRANSMISSION.



FRONT WHEEL LOCK



**CAUTION**  
 DISENGAGE RETARDER WHEN VEHICLE IS ON WET OR SLIPPERY SURFACES.



**WARNING**  
 ALWAYS engage Parking Brake AND run engine when using Front Wheel Lock.



LEFT

MIRROR CONTROLS

RIGHT

AERIAL  
MASTER

STABILIZER  
CAMERA

DS  
CORNERING  
LIGHT

PS  
CORNERING  
LIGHT

ROAD TO  
PUMP

1. STOP TRUCK

2. SHIFT TRUCK

PUMP TO  
ROAD

1. SHIFT TRUCK  
TRANSMISSION TO  
NEUTRAL

EMERGENCY MASTER ROOF LIGHT FRONT WARNING SIDE WARNING LOWER REAR WARNING UPPER REAR WARNING

OPTICOM HIGH BEAM FLASH ELECTRIC SIREN AIR HORN

FRONT SCENE REAR SCENE AIR HORN







EMERGENCY  
MASTER


ROOF  
LIGHT

FRONT  
WARNING

SIDE  
WARNING

LOWER  
REAR  
WARNING

UPPER  
REAR  
WARNING



OPTICOM

HIGH  
BEAM  
FLASH

ELECTRNC  
SIREN

AIR  
HORN





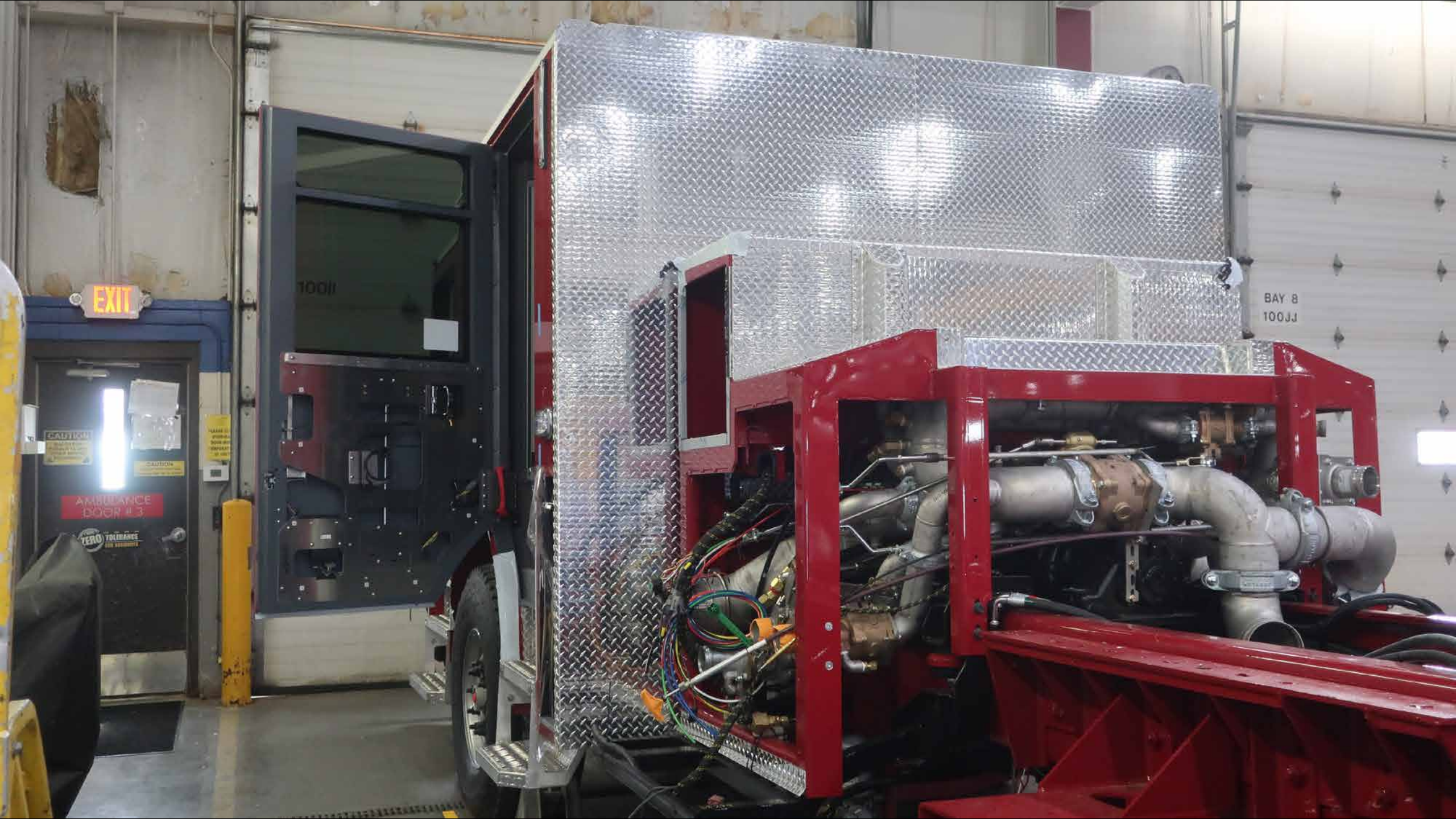
FRONT  
SCENE

DRIVER  
SCENE

PASS  
SCENE

REAR  
SCENE

LOAD  
MANAGER



EXIT

10011

BAY 8  
100JJ

CAUTION  
AMBULANCE DOOR # 3  
ZERO TOLERANCE FOR ERRORS

CAUTION













Pierce

1140  
USD





Pierce

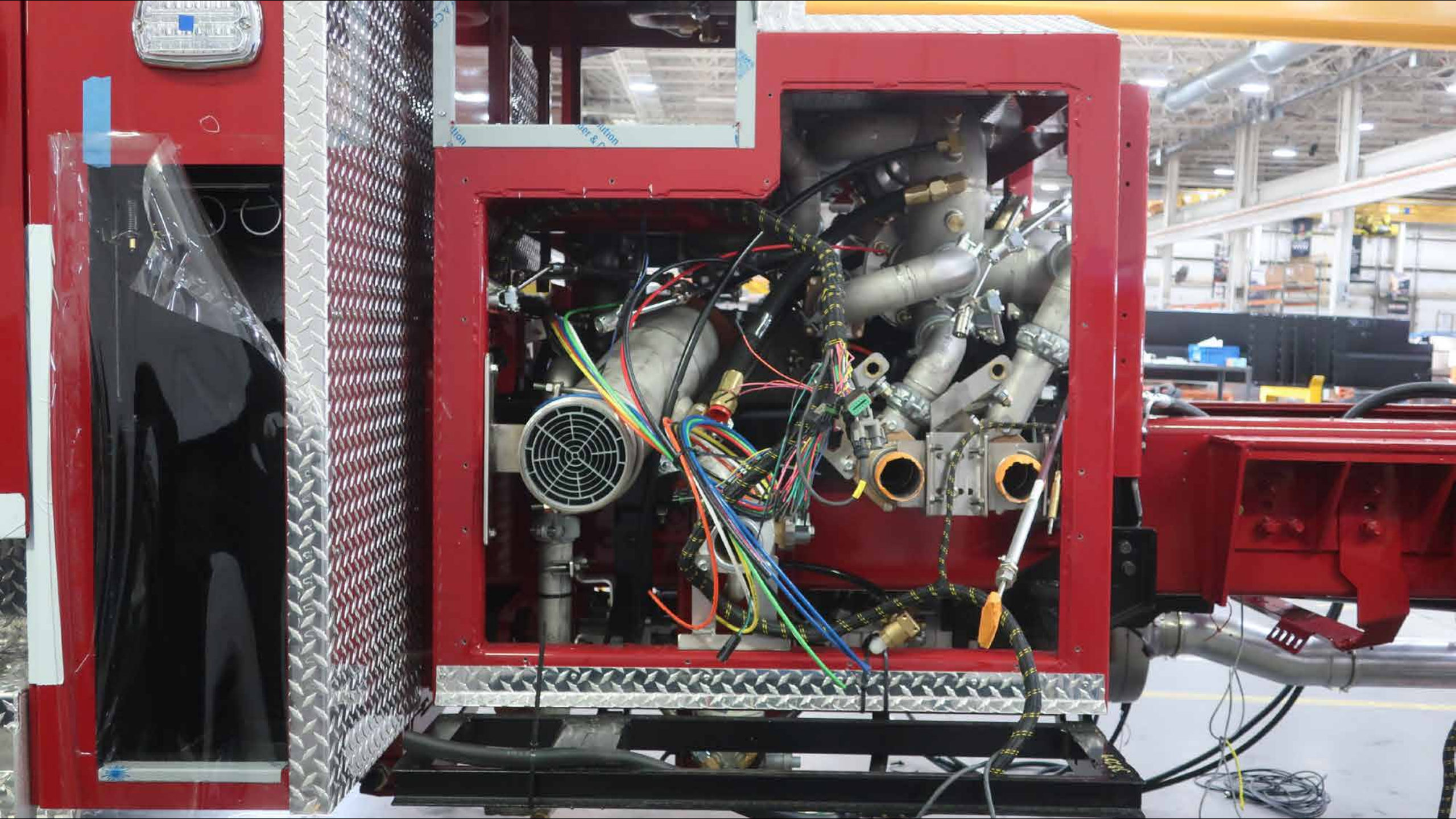
1402  
USDOT

Pierce  
12VDC  
Pierce  
12VDC



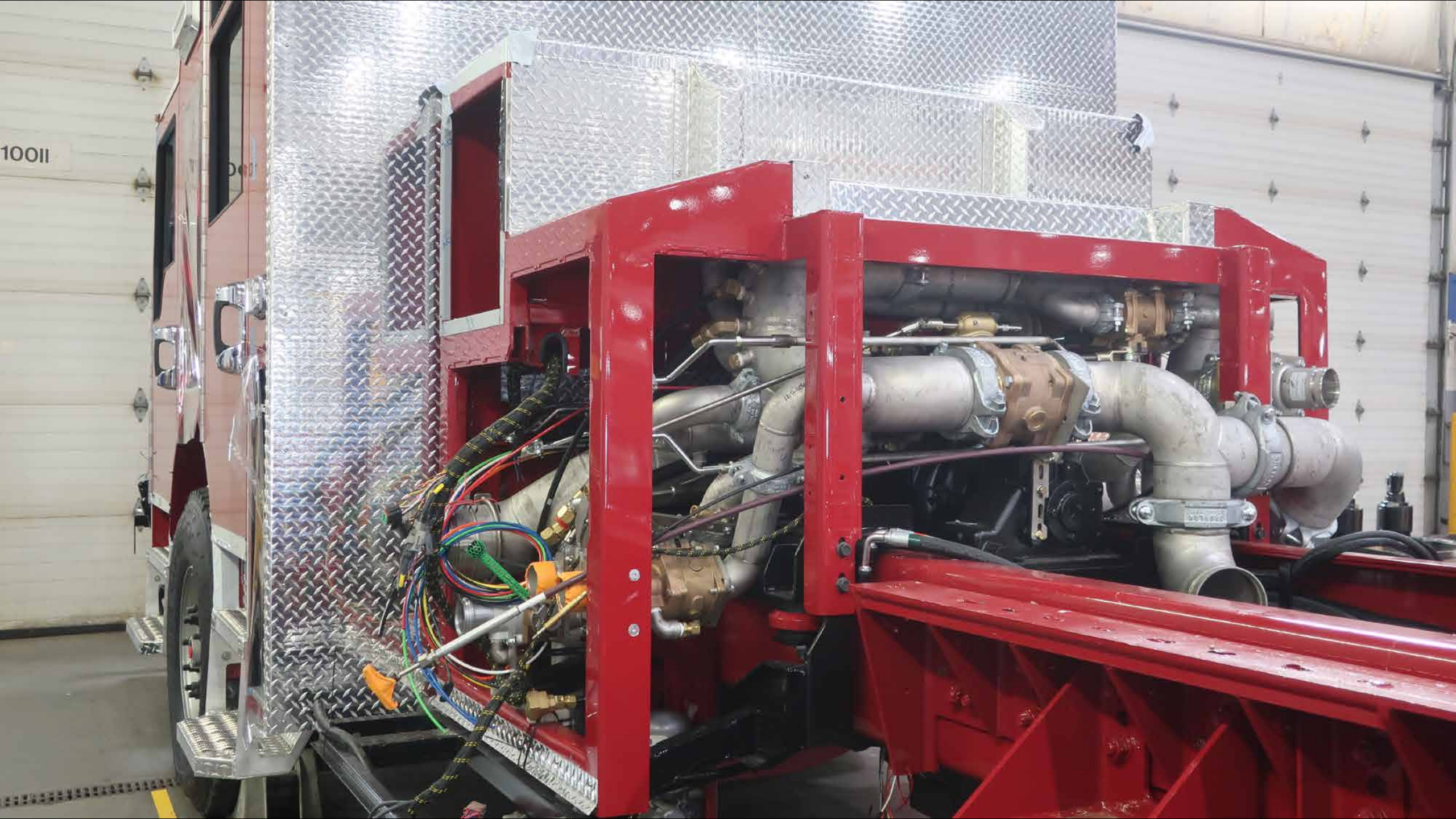








10011







BAY 8  
100JJ

BAY 9  
100KK





EXIT

BAY  
100





BAY 8  
100JJ

EXIT

CAUTION  
AMBULANCE  
DOORS

FISTENAL

0-8810

NUMBER ONE BEST OIL





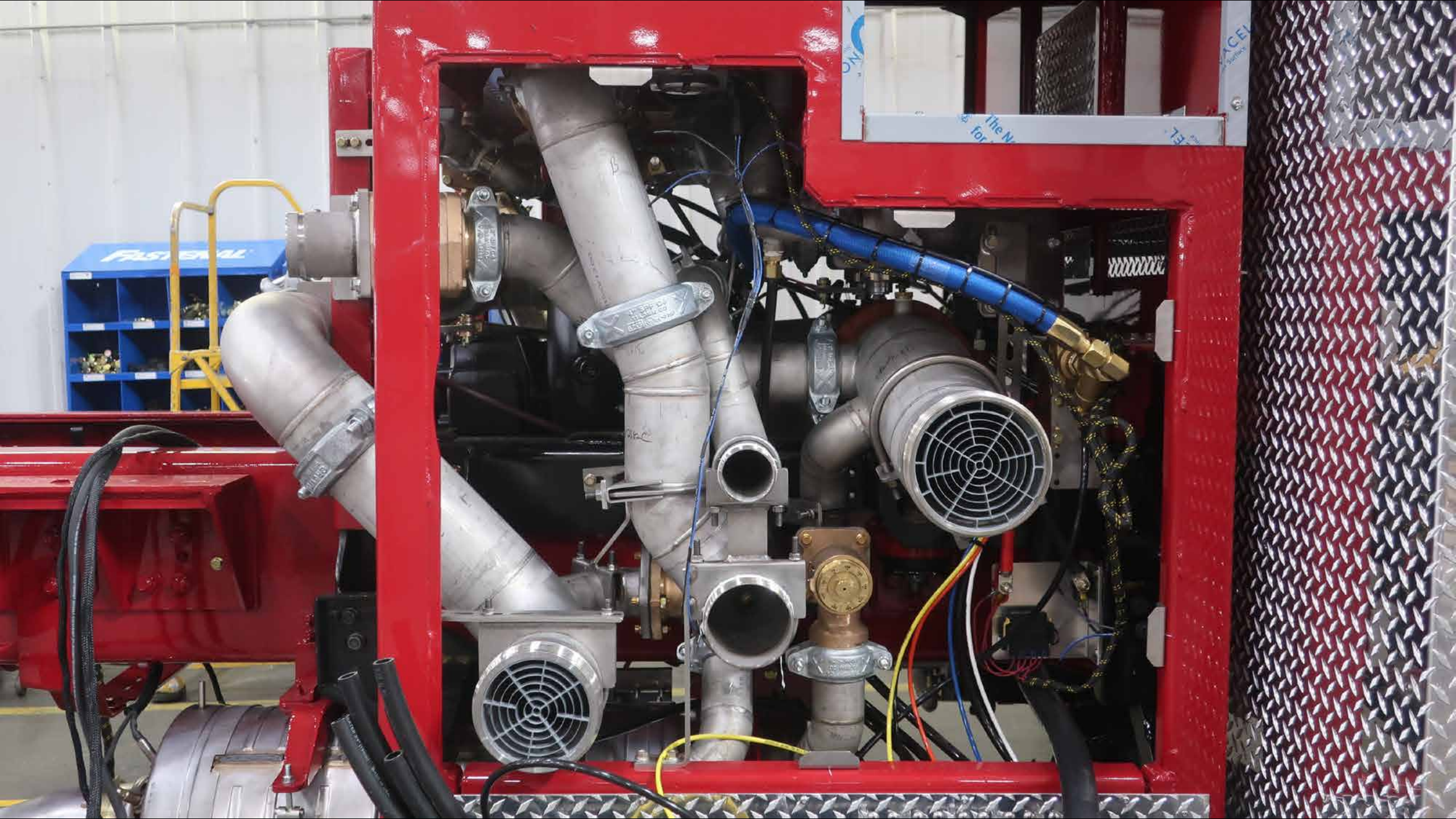
































White label on the window.



CAUTION

CAUTION  
WATCH FOR  
FORKLIFTS AND  
OTHER MOVING  
EQUIPMENT

AMBU

























SIREN BRAKE



AIR HORN





Pioneer  
ENTER INFO  
POWER  
+  
-  
REAR CONTROL  
1 2 3 4 5 6  
PG AS  
MODE

FRONT SCENE  
CENTER SCENE  
PASS SCENE  
REAR SCENE

POWER WINDOW

EMERGENCY STOP

10011



Bluetooth

JENSEN  
HEAVY DUTY

NOAA



MODE  
PAIR



BAND  
SCROLL



ENTER  
INFO



PS  
AS



1

2

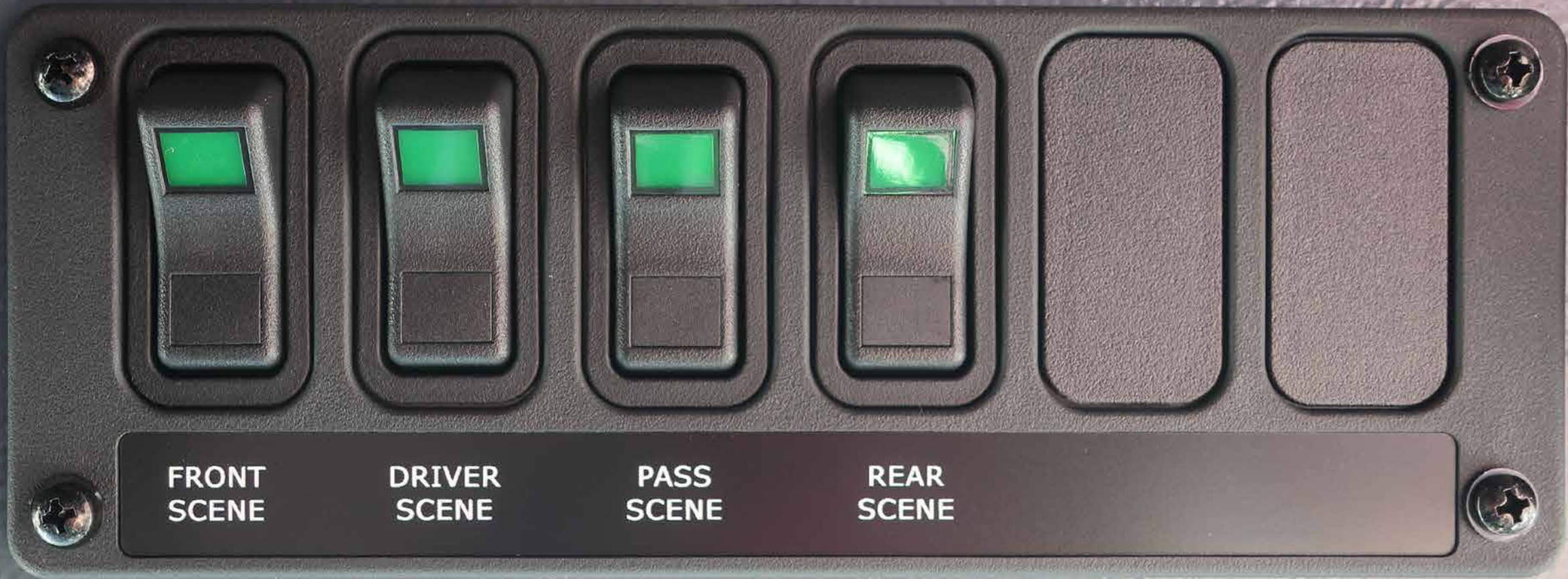
3

4

5

6

JH012



**FRONT  
SCENE**

**DRIVER  
SCENE**

**PASS  
SCENE**

**REAR  
SCENE**





ON

OFF

AUX

**WHELEN®**

FLASH

1

2

3



POWER



SPEAKERS

1 2

MAN 1

MAN 2

HF

T1

T2

T3

RAD

MAN

HORN

RAD

MIC VOL

WHEEL





BAY 9  
100KK







38289



BAY 8  
100JJ









BAY 9  
100KK

38289



38289 M













38289  
#90

SHIPPING









**HUGHES FIRE EQUIPMENT**