

# Photo Album for Pierce Job 38289 Pascua Pueblo Fire Department, AZ Custom Velocity 100' Aerial

## Wk 8 Production ending May 3, 2024

- The torque box has been mounted to the chassis and the aerial continues assembly at the 41 plant.
- The body continues assembly at the 41 plant.







38289



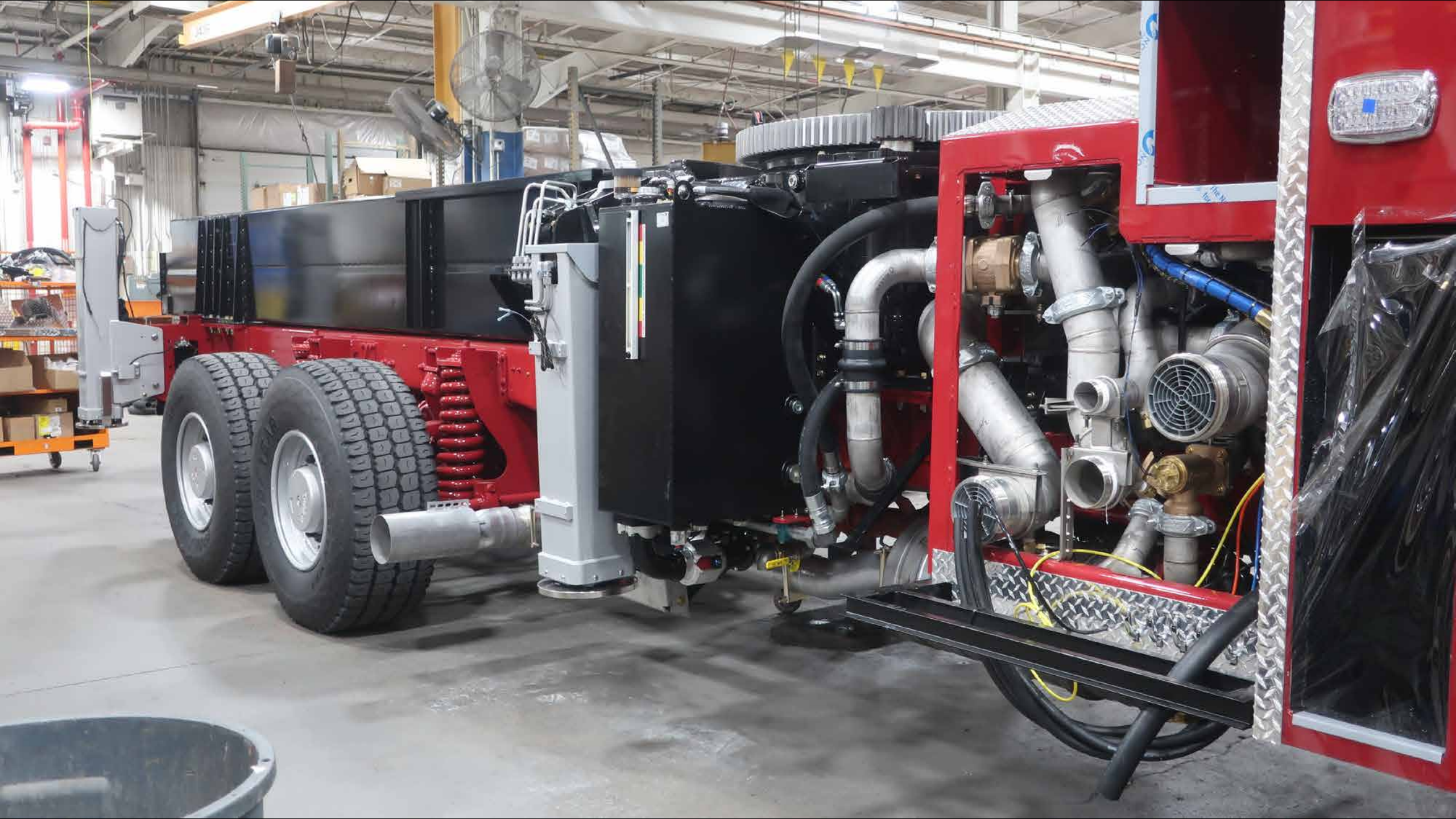




38209











NOTICE  
PROPERTY OF  
SOUTH COAST FIRE  
DEPARTMENT

416-2-257

22





Operator's Manual  
Safety Instructions  
Maintenance Procedures  
Electrical System Diagrams  
Parts List

35289

**CAUTION**  
Do not touch the battery terminals.  
Do not use tools on the battery.  
Do not smoke or use open flames near the battery.  
Do not drink or eat near the battery.  
Do not inhale the fumes from the battery.  
Do not touch the battery if you are wearing jewelry.  
Do not touch the battery if you are wearing gloves.  
Do not touch the battery if you are wearing a watch.  
Do not touch the battery if you are wearing a ring.  
Do not touch the battery if you are wearing a bracelet.  
Do not touch the battery if you are wearing a necklace.  
Do not touch the battery if you are wearing a headband.  
Do not touch the battery if you are wearing a hair tie.  
Do not touch the battery if you are wearing a headscarf.  
Do not touch the battery if you are wearing a headband.  
Do not touch the battery if you are wearing a headscarf.

BATTERY VOLTAGE  
12V  
0 1 2 3 4 5 6 7 8 9 10 11 12  
VOLTAGE INDICATOR

12  
11  
10  
9  
8  
7  
6  
5  
4  
3  
2  
1  
0



Small white label with illegible text, possibly a manufacturer's mark or identification tag.

B403



Pierce

Emergency flashers (red triangle icon)

START

IGNITION

Instrument cluster containing:

- Water temperature gauge (170 F to 260)
- RPM gauge (0 to 25 x100)
- MPH gauge (0 to 85)
- Volts gauge (12 to 16)
- Oil pressure gauge (0 to 100 PSI)
- Fuel gauge (0 to F)
- Front tire pressure gauge (0 to 150 PSI)
- Transmission gauge (100 to 300)
- Rear tire pressure gauge (0 to 150 PSI)

E-M

OFF

PANEL

ULTRA LOW SULFUR  
DIESEL FUEL ONLY

Pierce

2. ...  
your ...  
3. Always ...  
4. Never ...  
5. Always ...  
6. Never ...  
7. Always ...  
8. Never ...  
9. Always ...  
10. Never ...



**Adison**

MODE

R

N

D

Navigation pad

ENG BRK ON/OFF

ENG BRK LO/MED/HI

MIRROR HEAT

FRONT WHEEL LOCK

Four toggle switches

AERIAL MASTER

STABILIZER CAMERA

PS CORNERING LIGHT

Four toggle switches

PUMP ENGAGED

OK TO PUMP

**ROAD TO PUMP**

1. STOP TRUCK
2. SHIFT TRUCK TRANSMISSION TO NEUTRAL
3. SET PARKING BRAKE
4. THROW LEVER DOWN
5. ENGAGE TRUCK TRANSMISSION INTO DRIVE

IFT

**PUMP TO ROAD**

1. SHIFT TRUCK TRANSMISSION TO NEUTRAL
2. THROW LEVER UP
3. RELEASE PARKING BRAKE APPLY SERVICE BRAKE
4. ENGAGE TRUCK TRANSMISSION

**CAUTION**

DO NOT OPERATE WITH PUMP ENGAGED

**WARNING**

ALWAYS Engage Parking Brake AND Set Engine after Using Front Wheel Lock



PULL TO APPLY  
SYSTEM  
PARK  
SE

MONITOR

R MODE  
N  
D



SON  
MISSION

RO-1-ZOM

MODE



ENG BRK  
ON/OFF

ENG BRK  
LO/MED/HI

MIRROR  
HEAT

FRONT  
WHEEL  
LOCK



PUM  
ENGA



LEFT MIRROR CONTROLS RIGHT

AERIAL MASTER	STABILIZER CAMERA		DS CORNERING LIGHT	PS CORNERING LIGHT	

		<b>ROAD TO PUMP</b> 1. STOP TRUCK 2. SHIFT TRUCK TRANSMISSION TO NEUTRAL 3. SET PARKING BRAKE. 4. THROW LEVER DOWN. 5. ENGAGE TRUCK TRANSMISSION INTO DRIVE.		<b>PUMP TO ROAD</b> 1. SHIFT TRUCK TRANSMISSION TO NEUTRAL 2. THROW LEVER UP. 3. RELEASE PARKING BRAKE APPLY SERVICE BRAKE. 4. ENGAGE TRUCK TRANSMISSION.
PUMP ENGAGED	OK TO PUMP			

**CAUTION**  
DISENGAGE RETARDER WHEN VEHICLE IS ON WET



**WARNING**

LEFT

MIRROR CONTROLS

RIGHT

AERIAL  
MASTER

STABILIZER  
CAMERA

DS  
CORNERING  
LIGHT

PS  
CORNERING  
LIGHT

ROAD TO  
PUMP  
1. STOP TRUCK

PU

PUMP TO  
ROAD  
1. SHIFT TRUCK  
TRANSMISSION TO

EMERGENCY  
MASTER

ROOF  
LIGHT

FRONT  
WARNING

SIDE  
WARNING

LOWER  
REAR  
WARNING

UPPER  
REAR  
WARNING

SPRINKLER  
FIRE  
ALARM  
SIGNAL

REAR  
VIEW  
CAMERA



**EMERGENCY  
MASTER**

**ROOF  
LIGHT**

**FRONT  
WARNING**

**SIDE  
WARNING**

**LOWER  
REAR  
WARNING**

**UPPER  
REAR  
WARNING**



OPTICOM

HIGH  
BEAM  
FLASH

ELECTRNC  
SIREN

AIR  
HORN



**FRONT  
SCENE**

**DRIVER  
SCENE**

**PASS  
SCENE**

**REAR  
SCENE**

**LOAD  
MANAGER**





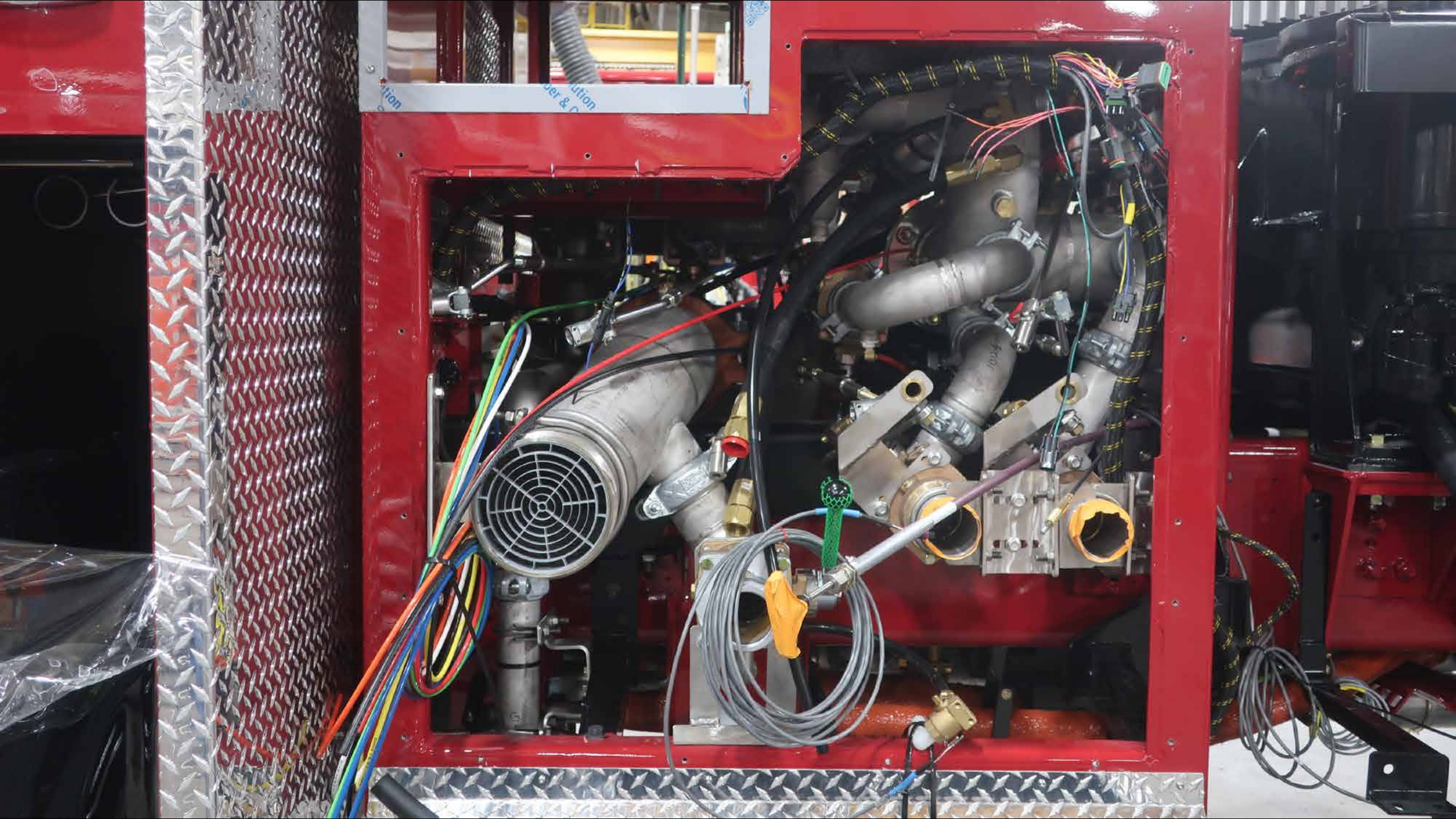
















38289







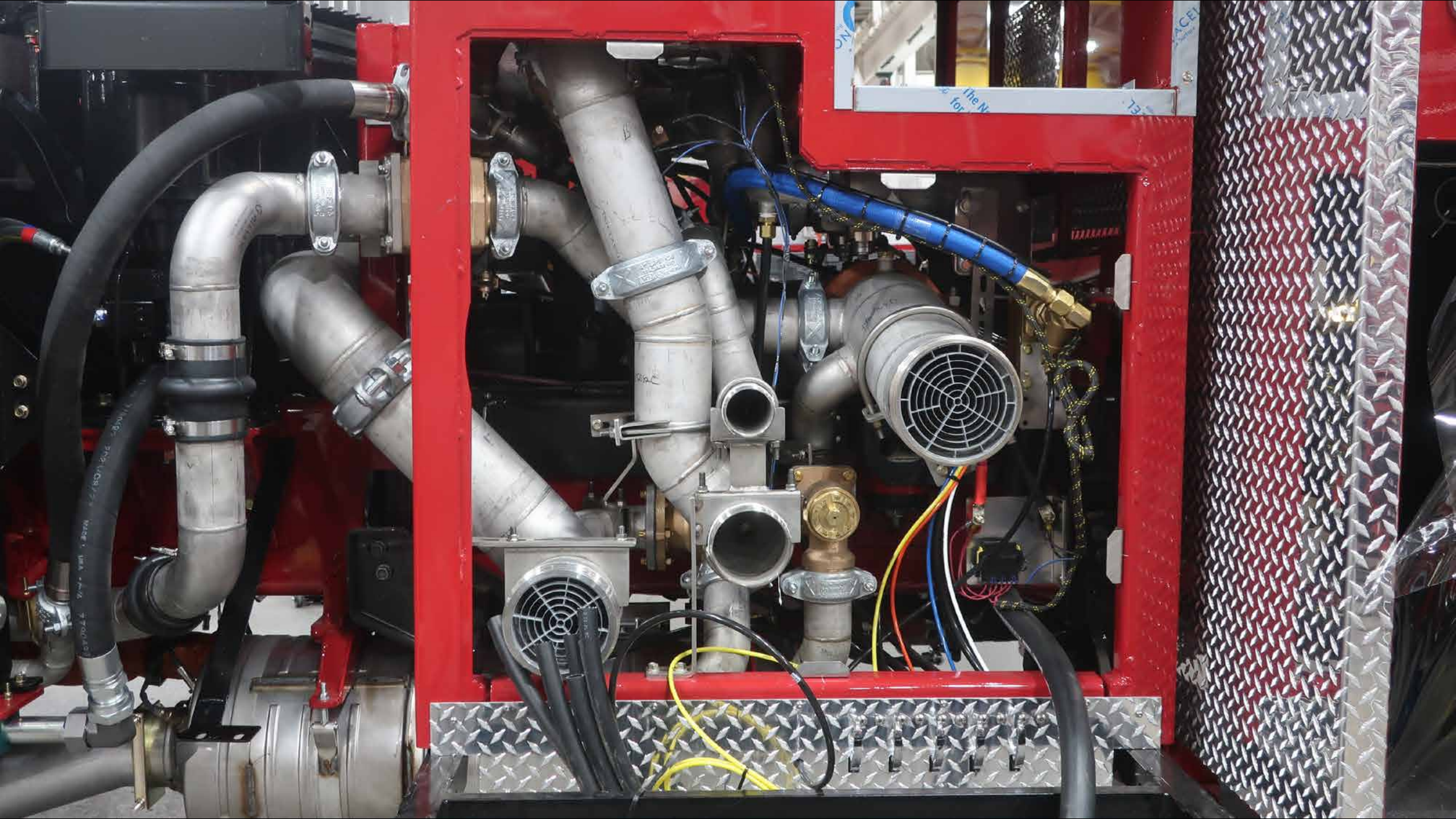
38289

























B399A





Bluetooth

JENSEN  
HEAVY DUTY

NOAA

MODE  
PAIR

ENTER  
INFO

BAND  
SCROLL

PS  
AS

1 2 3 4 5 6

JHD12



**FRONT  
SCENE**

**DRIVER  
SCENE**

**PASS  
SCENE**

**REAR  
SCENE**



ON

OFF

AUX



FLASH

1

2

3


**WHELEN®**





**GOLIGHT**





SIREN BRAKE

AIR HORN

38289  
#90

















**HUGHES FIRE EQUIPMENT**