

Photo Album for Pierce Job 38291
City of Bellingham, WA
Custom Enforcer Pumper

Wk 10 Production ending July 26, 2024

- The pumper continues assembly at the 41 plant.

Pierce

FAIRHAVEN HOSE CO



3829

Pierce

FAIRHAVEN HOSE CO







Pierce

FAIRHAVEN HOSE CO





To avoid turbo damage
idle engine for 5 min.
before shutting down.

CAB LOCKS
NOT
ENGAGED

LOAD
MANAGER

WARNING
DISCONNECT BATTERY WIRING TO
PREVENT DAMAGE TO EQUIPMENT
PROPERTY OF THE OPERATOR.

ON



*** MADE WITH PRIDE IN *****
AMERICA
***** BY PEOPLE WHO CARE ***







ROAD TO PUMP
1. STOP TRUCK
2. SHIFT TRUCK TRANSMISSION TO NEUTRAL



ENG BRK
ON/OFF

ENG BRK
LO/MED/HI

TIRE
CHAINS

DIFF
LOCK

MIRROR
HEAT

© ALLISON

MPL
OR SI



Pierce

AUTO

88



**EMERGENCY
MASTER**

**ROOF
LIGHT**

**FRONT
WARNING**

**SIDE
WARNING**

**UPPER
REAR
WARNING**

**LOWER
REAR
WARNING**

**HIGH
BEAM
FLASH**

OPTICOM

**FRONT
FLOOD**

**DRIVERS
FLOOD**

**PASS
FLOOD**

**REAR
FLOOD**



**DRIVERS
ALLEY**

**PASS
ALLEY**

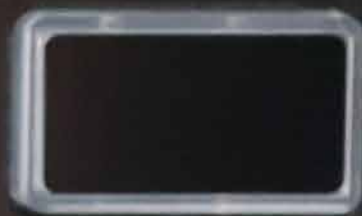
**BACKUP
ALARM
OVERRIDE**

**TRAFFIC
LEFT**

**TRAFFIC
AUX**

**TRAFFIC
RIGHT**

**SILENT
RUN**

























PANEL LIGHTS

A large, dark grey control panel with six rows of light switches. Each row has a label on the left and a switch with a green indicator light on the right. The switches are currently in the 'off' position.

FRONT FLOODLIGHT
DRIVER SIDE FLOODLIGHT
PASSENGER SIDE FLOOD LIGHT
REAR FLOODLIGHT
DRIVER SIDE ALLEY LIGHTS
PASSENGER SIDE ALLEY LIGHTS

OK TO PUMP



PUMP COMPARTMENT LIGHTS

Fiber & CO₂ Laser

DEADLAY

REEL BLOWOUT

OPEN
ENGINE COOLER

OPEN
RE-CIRCULATING LINE

AKRON
LASER SYSTEMS



REAR DISCHARGE

PASSENGER REAR PRECONNECT

DRIVER REAR 2 1/2" DISCHARGE

PASSENGER REAR 2 1/2" DISCHARGE



TANK FILL & RE-CIRCULATING LINE

Pierce

TANK LEVEL

WATER

OK TO PUMP PRESSURE

THROTTLE READY RPM

MODE PRESET

STOP

PASSENGER SIDE 2" DISCHARGE

DECK GUN

INTAKE RELIEF VALVE

- PULL KNOB OUT TO ADJUST.
- TURN TO CHANGE SET PRESSURE.
- PUSH KNOB IN TO LOCK.

TRIM

PULL TO LOCK

HALE TRV-1

PUMP HOT WHEN LIT

PUSH TO TEST

DRIVER MAIN INLET

WATEROUS

OPEN CLOSED



AKRON

AKRON

PRIMER

PRIMER

TANK TO PUMP

REEL BLOWOUT

ENGINE COOLANT

RE-COLLATING



FRONT INLET

REEL DISCHARGE

FRONT DISCHARGE

DRIVER REAR PRECONNECT



HALF TON-1

INTAKE RELIEF VALVE

- PULL KNOB OUT TO ADJUST
- TURN TO CHANGE SET PRESSURE
- PUSH KNOB IN TO LOCK

PASSENGER SIDE 1" DISCHARGE

DECK GUN





INTAKE RELIEF VALVE

- PULL KNOB OUT TO ADJUST.
- TURN TO CHANGE SET PRESSURE.
- PUSH KNOB IN TO LOCK.

PULL TO UNLOCK

AIR MAX PSI 400

PUMP HOT  **WHEN LIT**

PUSH TO TEST 

HALE TRV-L



DRIVER MAIN INLET

OPEN      **CLOSED** 



WATEROUS



DRIVER 2 1/2"
DISCHARGE



PASSENGER SIDE
2 1/2" DISCHARGE



PASSENGER SIDE 5"
DISCHARGE



DECK GUN



INTAKE RELIEF VALVE
• PULL KNOB OUT TO ADJUST
• TURN TO CHANGE SET POINT
• PUSH KNOB IN TO LOCK.



DRIVER 2 1/2"
DISCHARGE



PASSENGER SIDE 5"
DISCHARGE



DECK GUN



PRIMER
FRONT INTAKE

TRIDENT
AIR PRIME
PUSH
TO
PRIME



PRIMER
FIRE PUMP

TRIDENT
AIR PRIME
PUSH
TO
PRIME



PASSENGER SIDE 5"
DISCHARGE

DECK GUN

**PRIMER
FRONT INTAKE**

TRIDENT
**AIR
PRIME**



**PUSH
TO
PRIME**

**PRIMER
FIRE PUMP**

TRIDENT
**AIR
PRIME**



**PUSH
TO
PRIME**

PRIMING INSTRUCTIONS

FOR ENHANCED PRIMING
PERFORMANCE, RUN ENGINE AT 1000
RPM WHILE PRIMING

1966310

PRIMING INSTRUCTIONS

FOR ENHANCED PRIMING
PERFORMANCE, RUN ENGINE AT 1000
RPM WHILE PRIMING

1966310

WATEROUS

PUMP MODEL: CSU SERIAL NO: 182550
TRANS MODEL: C22D SERIAL NO: 182550
DATE: APR-2024 RATIO: 2.46
CAPACITY: 1500 GPM AT 150 DISCH PSIG
HYDRO: 600 PSIG MAX DISCH: 400 PSIG

REEL DISCHARGE

PUMP DRAIN
PULL TO DRAIN


DO NOT OPEN OR CLOSE
UNDER PRESSURE

**MINIMUM OPERATION
MAINTENANCE
SCHEDULE***

CHECK OPERATION WEEKLY:
Relief valve or pressure
controller
Transfer valve
Priming system
Packing gland Leakage
Normal: 10-120 drops
per minute
Mechanical Seals Leakage - 0

**EVERY 6 MONTHS OR 100
OPERATING HOURS:**
Gear Case - change lubricant
(Use SAE 90 gear lube)
Chain Case - change lubricant
(Use automatic transmission
fluid, ATF)
Grease outboard bearing -
Use BRB grease (Ball
and roller bearing)

*Original Pump Manual
for complete information



CAUTION
PLACE CAB SHIFT IN NEUTRAL
PUSH FOR ROAD
PULL FOR PUMP

MANUAL
PUMP SHIFT

PULL TO OPEN
DRIVER 2 1/2"
DISCHARGE

PULL TO OPEN
DRIVER REAR
PRECONNECT

PULL TO OPEN
DRIVER REAR
2 1/2" DISCHARGE



FRONT INLET
AIR BLEED

DRIVER MAIN INLET
AIR BLEEDER

PULL TO OPEN
DRIVER SIDE
AUX. INLET

DRIVER SIDE
AUX. INLET

UP
DOWN









LOCAL
PLACEMENT

THE RED LIFELINE

Do not swing open

WHLEN



REAR
FLOODLIGHT



HOSE BED LIGHTS







Do not swing open

Do not swing open









DON'T BLAME ME
- I'VE GOT A TRUCK -

WHILEN

Pierce





Nitto

Nitto

Nitto

Nitto

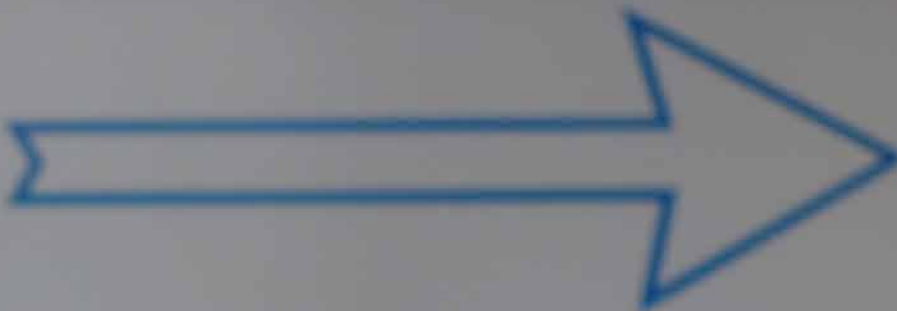
Nitto

Nitto

FILE



GUARD for Fiber & Co





CAB LIFT OPERATING INSTRUCTIONS

CAUTION

CHECK OVERHEAD AREA, BUMPER COMPONENTS, MIRRORS, AND SIGHT RODS FOR CLEARANCE BEFORE TILTING CAB.

DANGER

CAB STAY ARM MUST BE IN THE SUPPORT POSITION BEFORE MOVING UNDER OR WORKING ON THE CAB IN THE TILT POSITION. NEVER WORK ON THE CAB WITHOUT STAY ARM IN THE SUPPORT POSITION. FAILURE TO FOLLOW PROPER PROCEDURES CAN RESULT IN INJURY OR DEATH.

TO RAISE CAB:

1. Prepare cab to tilt:
Park on level surface.
Turn engine OFF.
Set parking brake.
Secure loose items in cab.
No obstructions in tilt path
Fold up steps on rear wall.
2. Turn battery switch to ON.
3. Turn ignition switch to ON.
4. Move control switch to RAISE.
5. Press ACTIVATE switch until cab fully lifts.
6. Swing safety Stay-Arm into pocket.
7. Move control switch to LOWER.
8. Press ACTIVATE switch until cab is resting on Stay-Arm.

TO LOWER CAB:

1. Prepare cab to lower:
Check that no persons or obstructions are in tilt path.
Fold up steps on rear wall.
2. Parking brake must be set.
3. Turn battery switch to ON.
4. Turn ignition switch to ON.
5. Move control switch to RAISE.
6. Press ACTIVATE switch until cab is off safety Stay-Arm.
7. Stow and secure Stay-Arm.
8. Move control switch to LOWER.
9. Press ACTIVATE switch until cab fully lowers and for 5 seconds after cab comes to rest.
10. Make sure cab is latched down before operating vehicle.

Manual Override: See Operation Manual

RAISE



LOWER

ACTIVATE



2644992-0001

CAB LIFT

CAB LIFT





PRIMER DRAIN

PULL TO OPEN
DECK GUN



PULL TO OPEN
PASSENGER REAR 2 1/2"
DISCHARGE

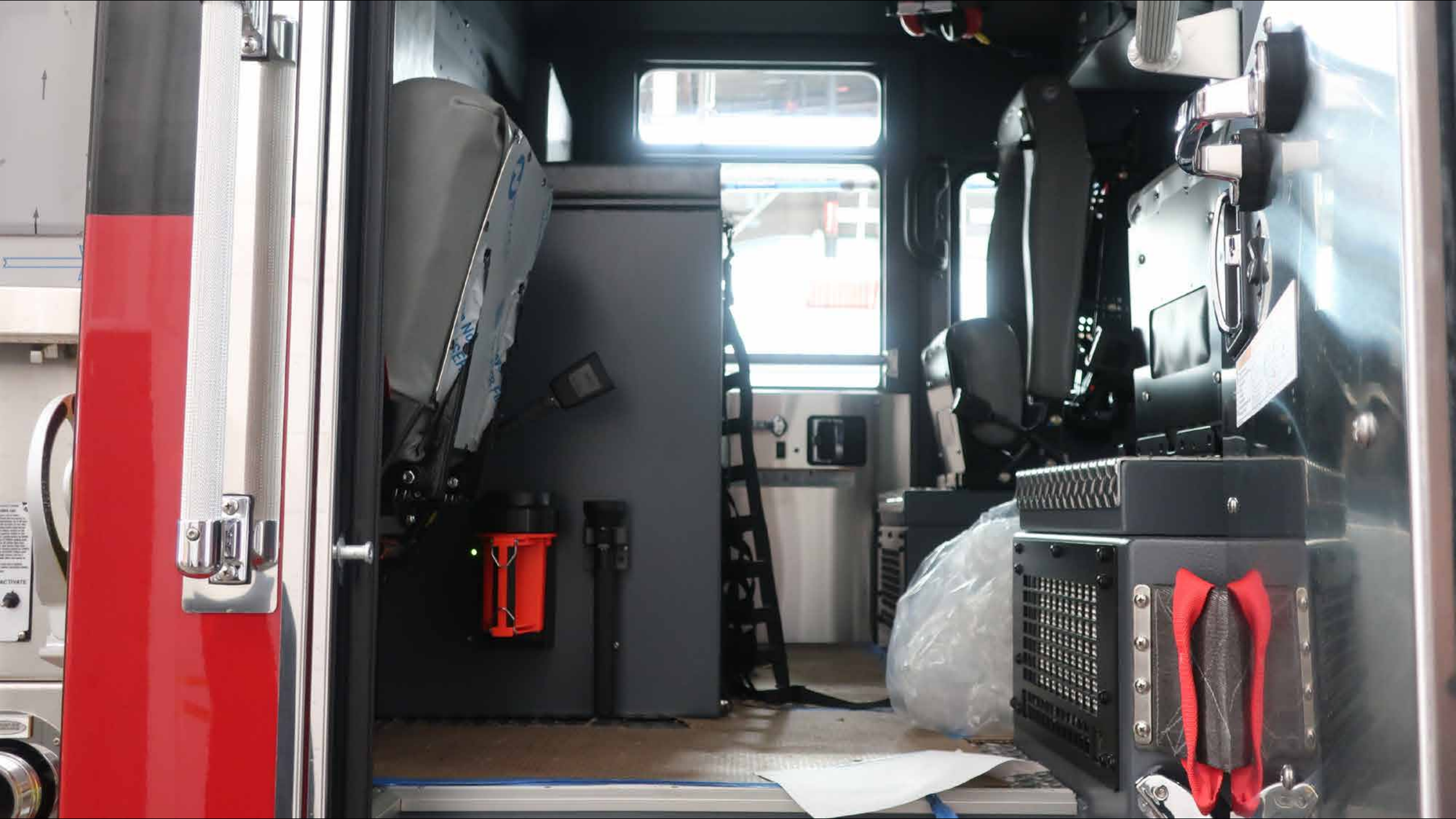
PULL TO OPEN
PASSENGER REAR
PRECONNECT

PULL TO OPEN
PASSENGER SIDE
5" DISCHARGE

PULL TO OPEN
PASSENGER SIDE
2 1/2" DISCHARGE



















AIR HORN



WARNING

WARNING

FRONT FLOOD
DRIVERS FLOOD
PASS FLOOD
REAR FLOOD
DRIVERS ALLEY
OPEN BRAKE
PASS ALLEY

WARNING

WARNING

WARNING

WARNING

WARNING

**FRONT
FLOOD**

**DRIVERS
FLOOD**

**PASS
FLOOD**

**REAR
FLOOD**

**DRIVERS
ALLEY**

**SIREN
BRAKE**

**PASS
ALLEY**

SPEEDOMETER









HUGHES FIRE EQUIPMENT