

# Photo Album for Pierce Job 38291 City of Bellingham, WA Custom Enforcer Pumper

## Wk 3 Production ending June 7, 2024

- The cab continues the paint process at the 41 plant.
- The chassis has begun assembly at the Neenah plant.
- The pump continues assembly at the IPP plant.
- The body continues weld operations at the IPP plant.

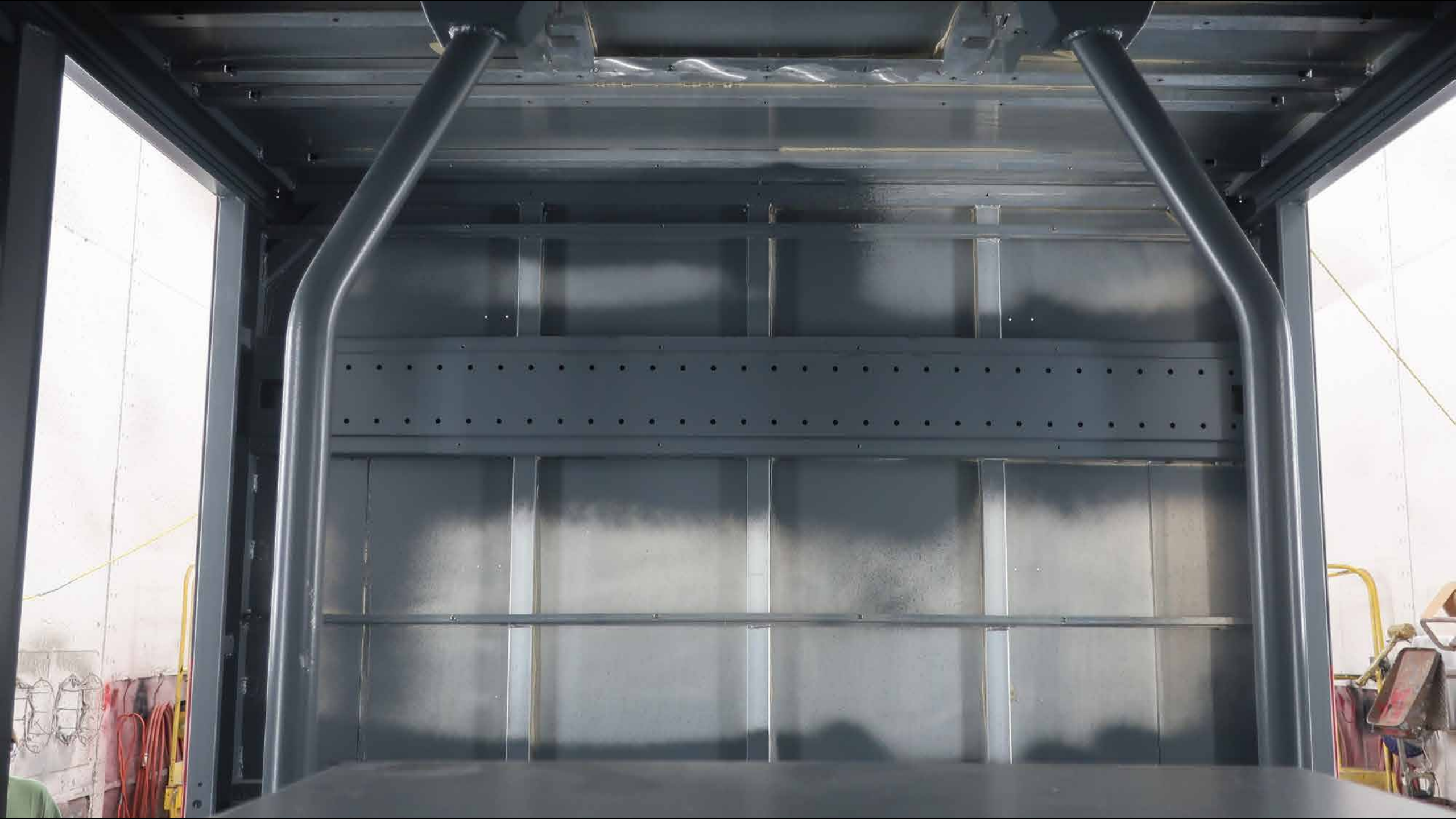














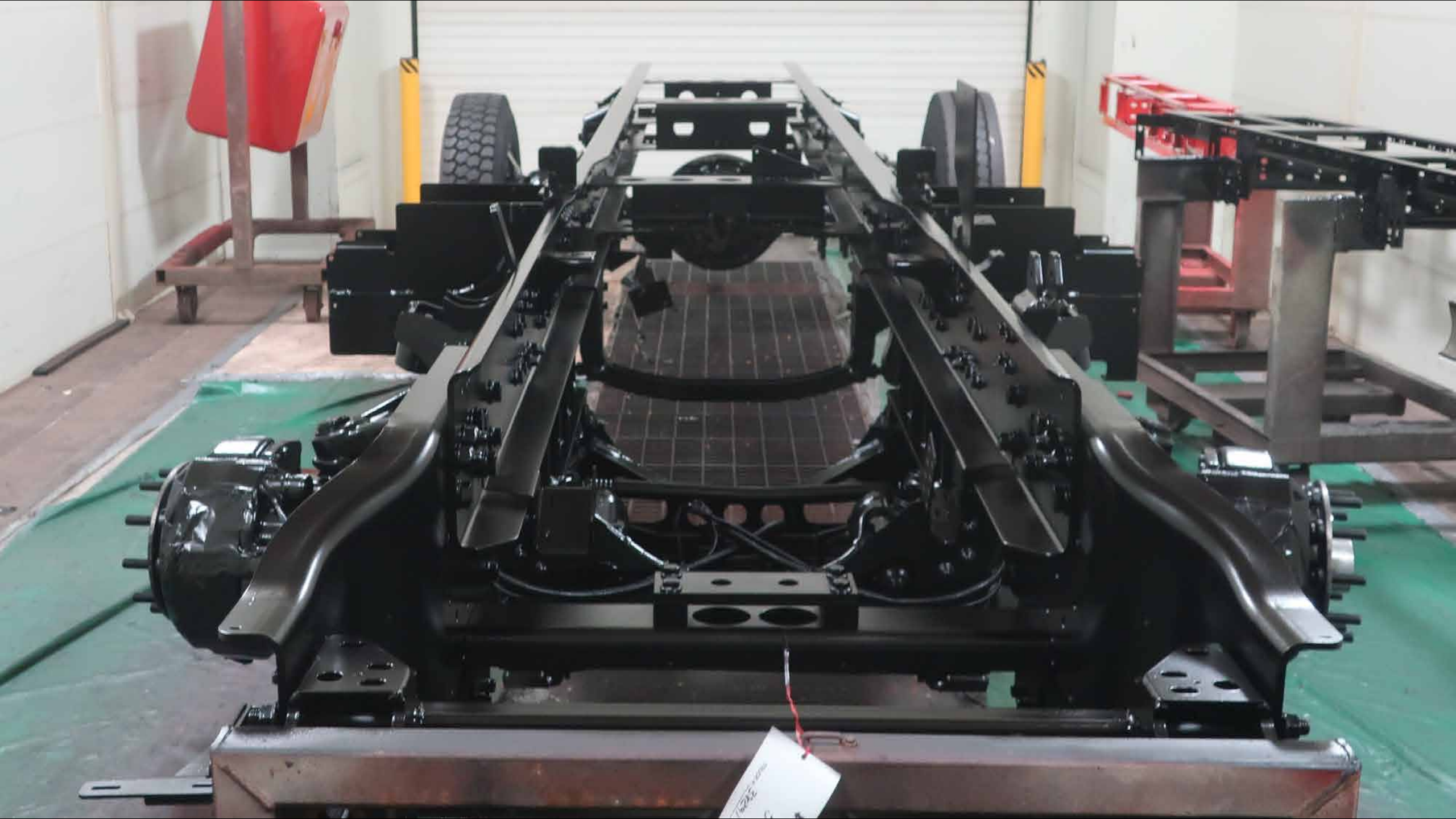














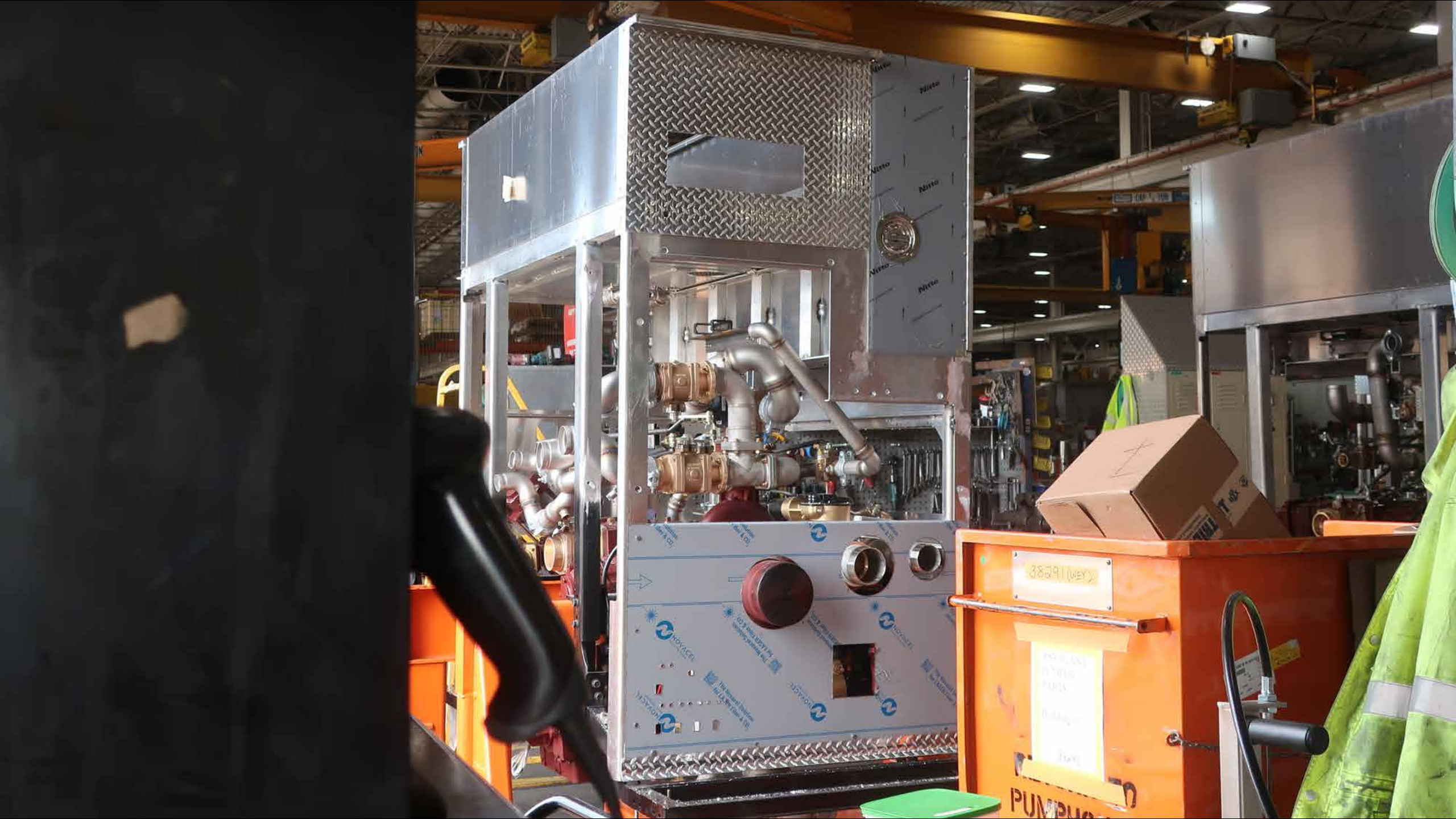










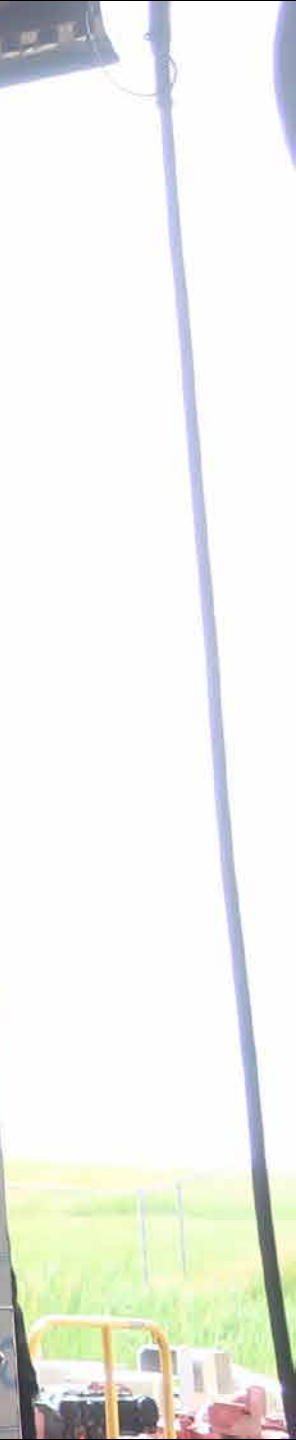


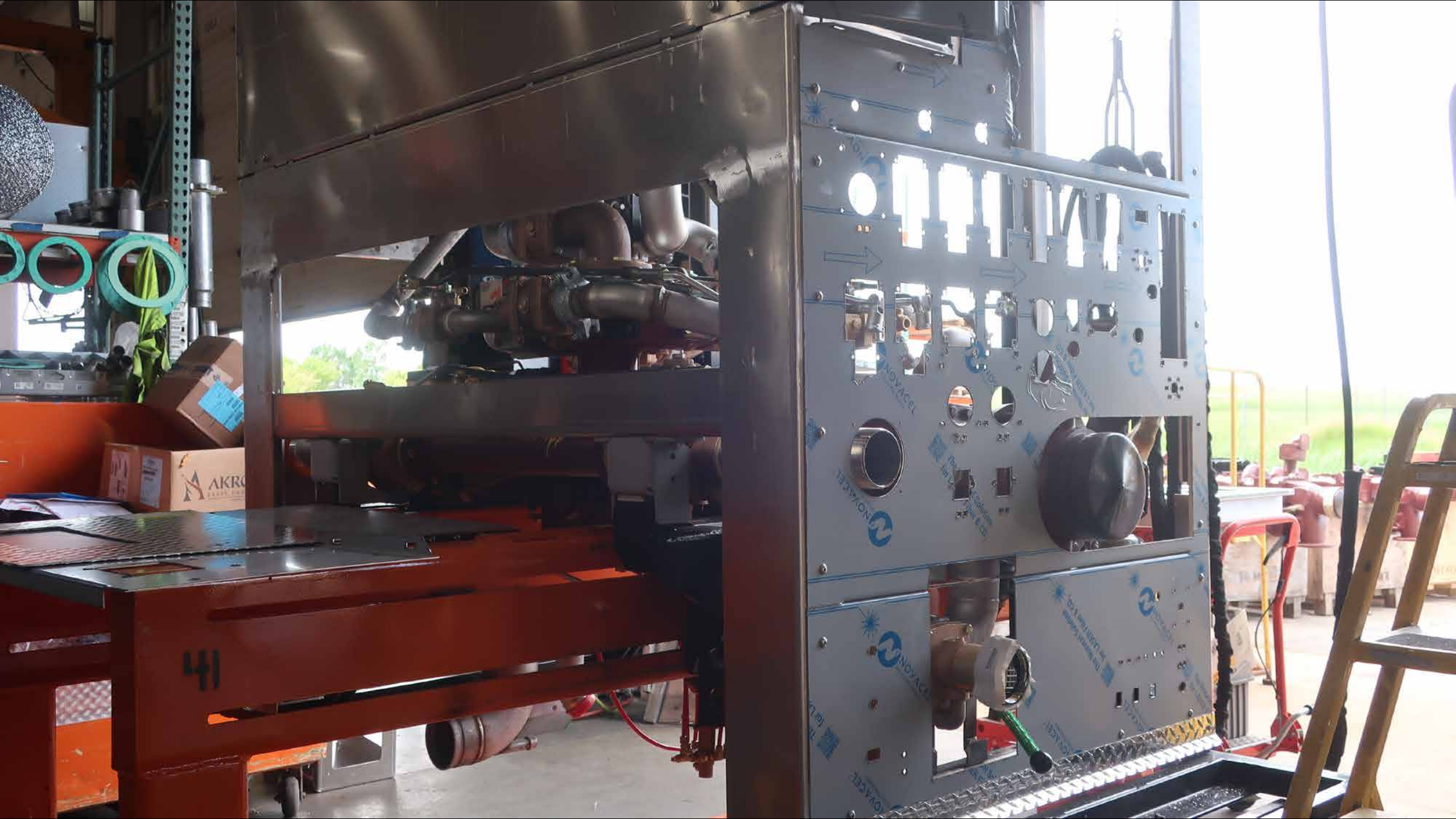




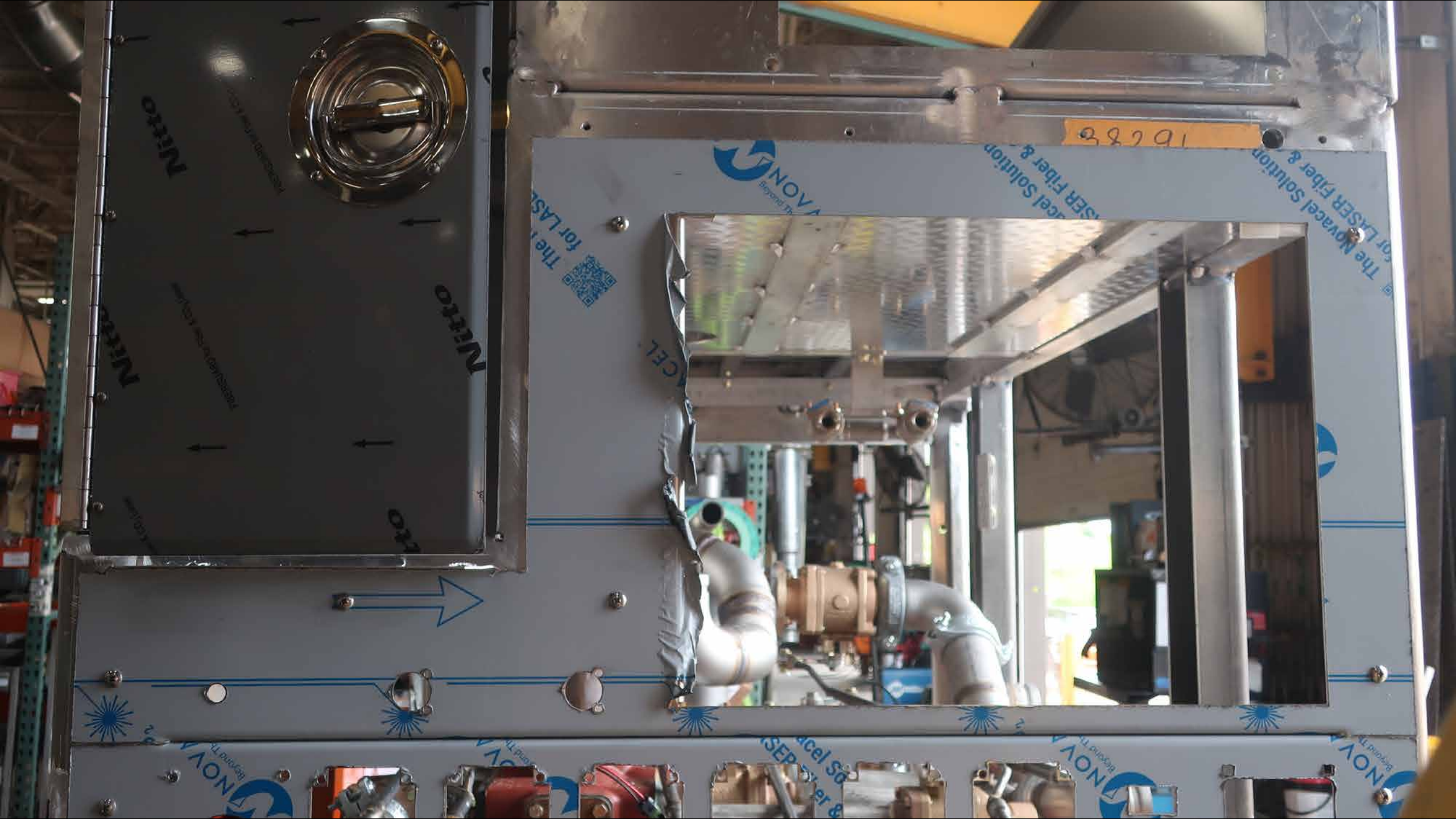


ING SYSTEMS (CAP. 1/4 TON









1928

NOVA  
The Novacel Solution  
for LASER Fiber &

The Novacel Solution  
for LASER Fiber &

The Novacel Solution  
for LASER Fiber &

NOVA

NOVA

NOVA

NOVA

NOVA  
The Novacel Solution  
for LASER Fiber &

NOVA  
The Novacel Solution  
for LASER Fiber &

NOVA  
The Novacel Solution  
for LASER Fiber &

NOVA  
The Novacel Solution  
for LASER Fiber &

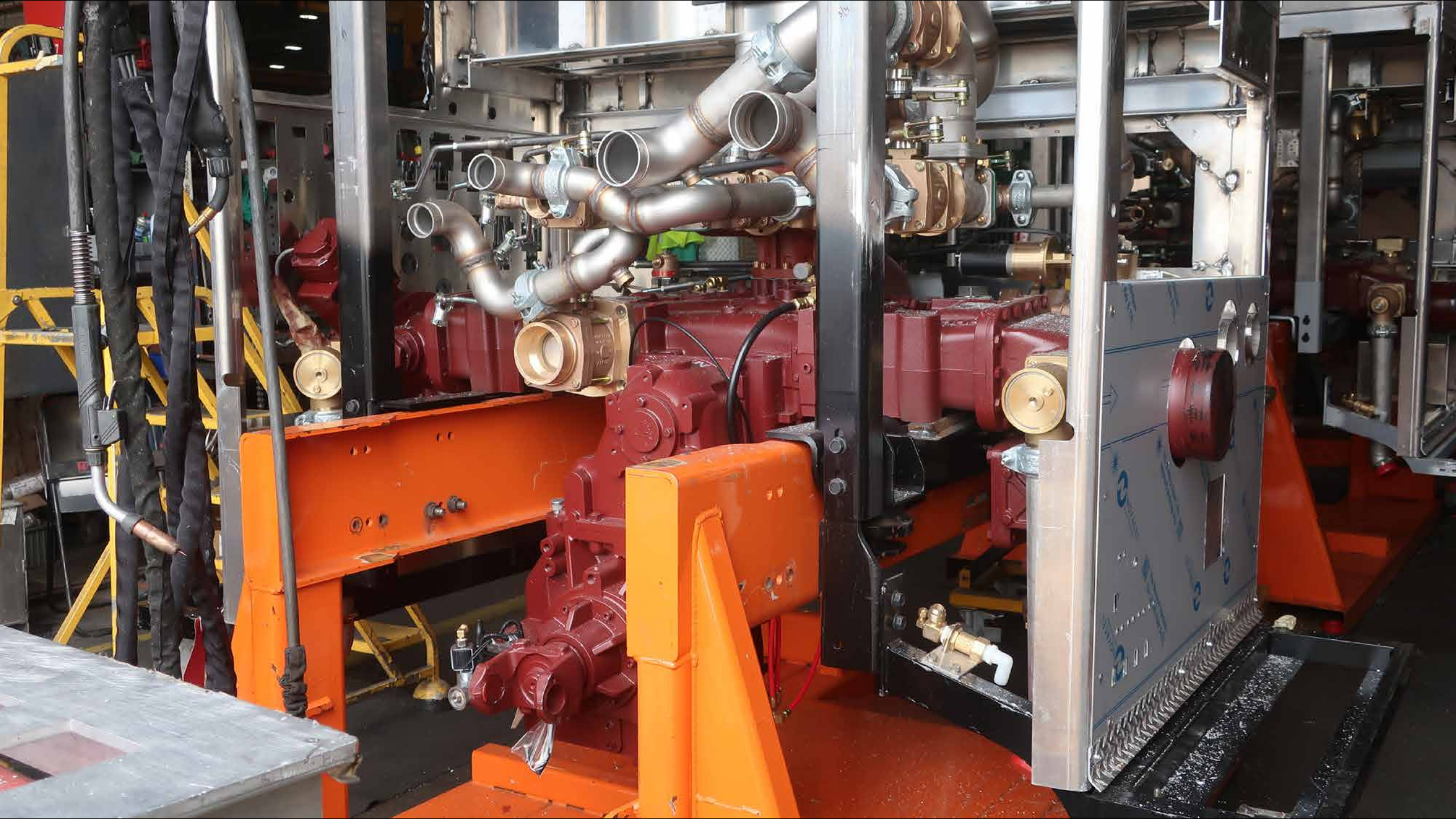
NOVA  
The Novacel Solution  
for LASER Fiber &





SEMBLY





38291



38291









38291  
SHIP



Airco  
Airco  
Nitr











**HUGHES FIRE EQUIPMENT**