

Photo Album for Pierce Job 38291

City of Bellingham, WA

Custom Enforcer Pumper

Wk 4 Production ending June 14, 2024

- The cab has completed the paint process and has begun assembly at the Neenah plant.
- The chassis continues assembly at the Neenah plant.
- The pump continues assembly at the IPP plant.
- The body has completed weld operations and is staged at FTL to begin the paint process at the 41 plant.



2829
308291

2829
308291

2829
308291



8291

5889

TouchN'Tuff

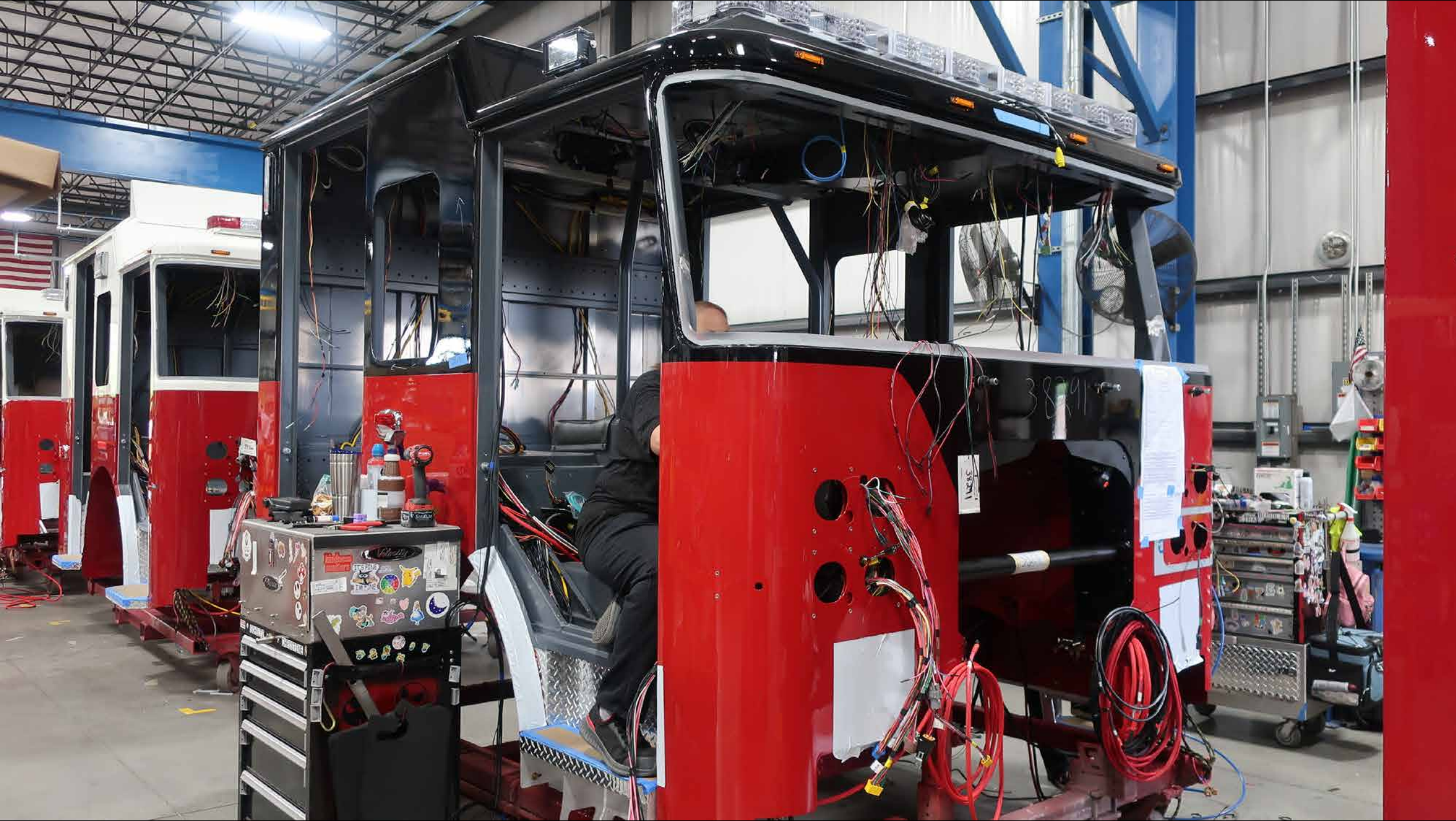


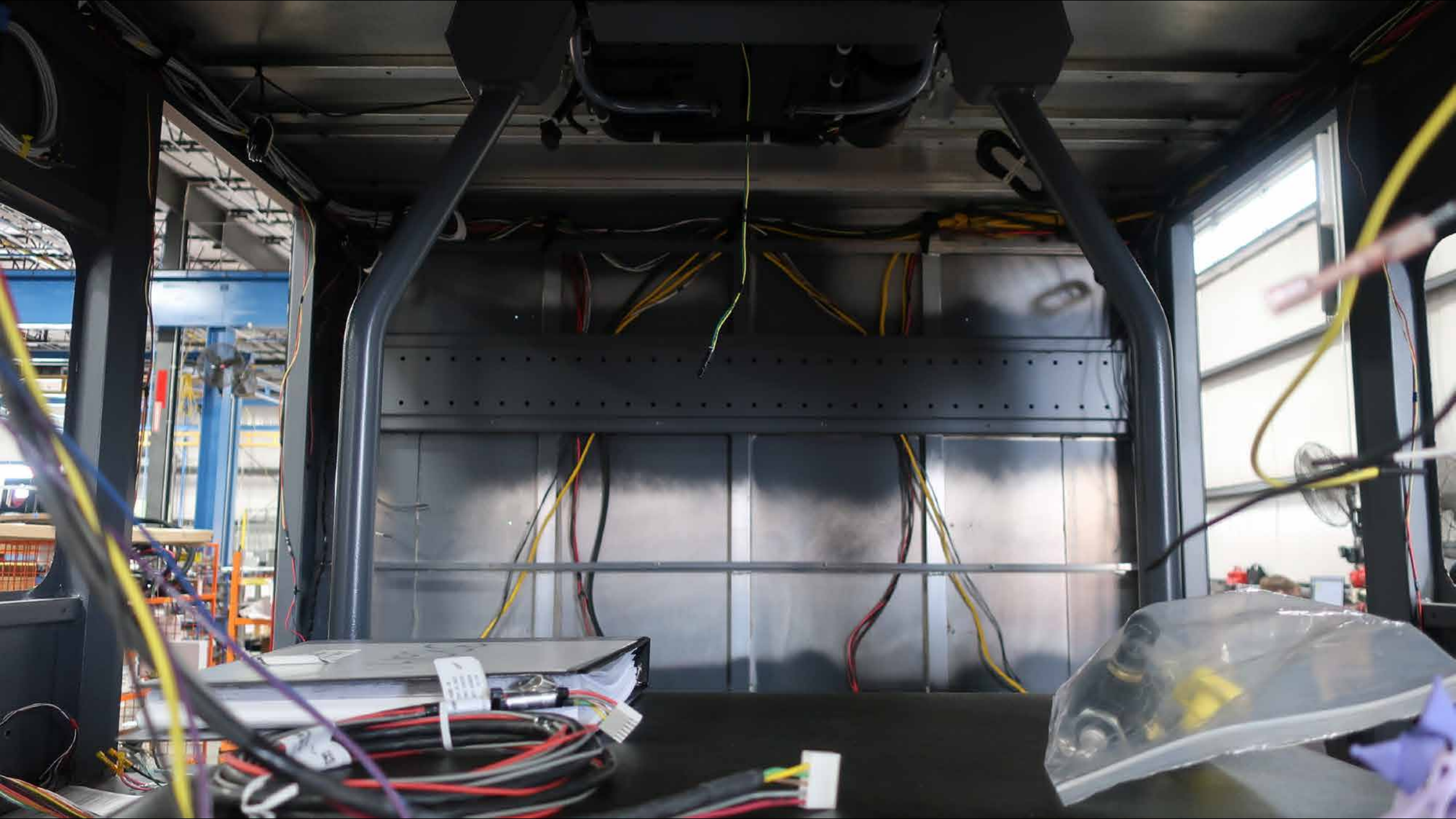


39866

3829
#10

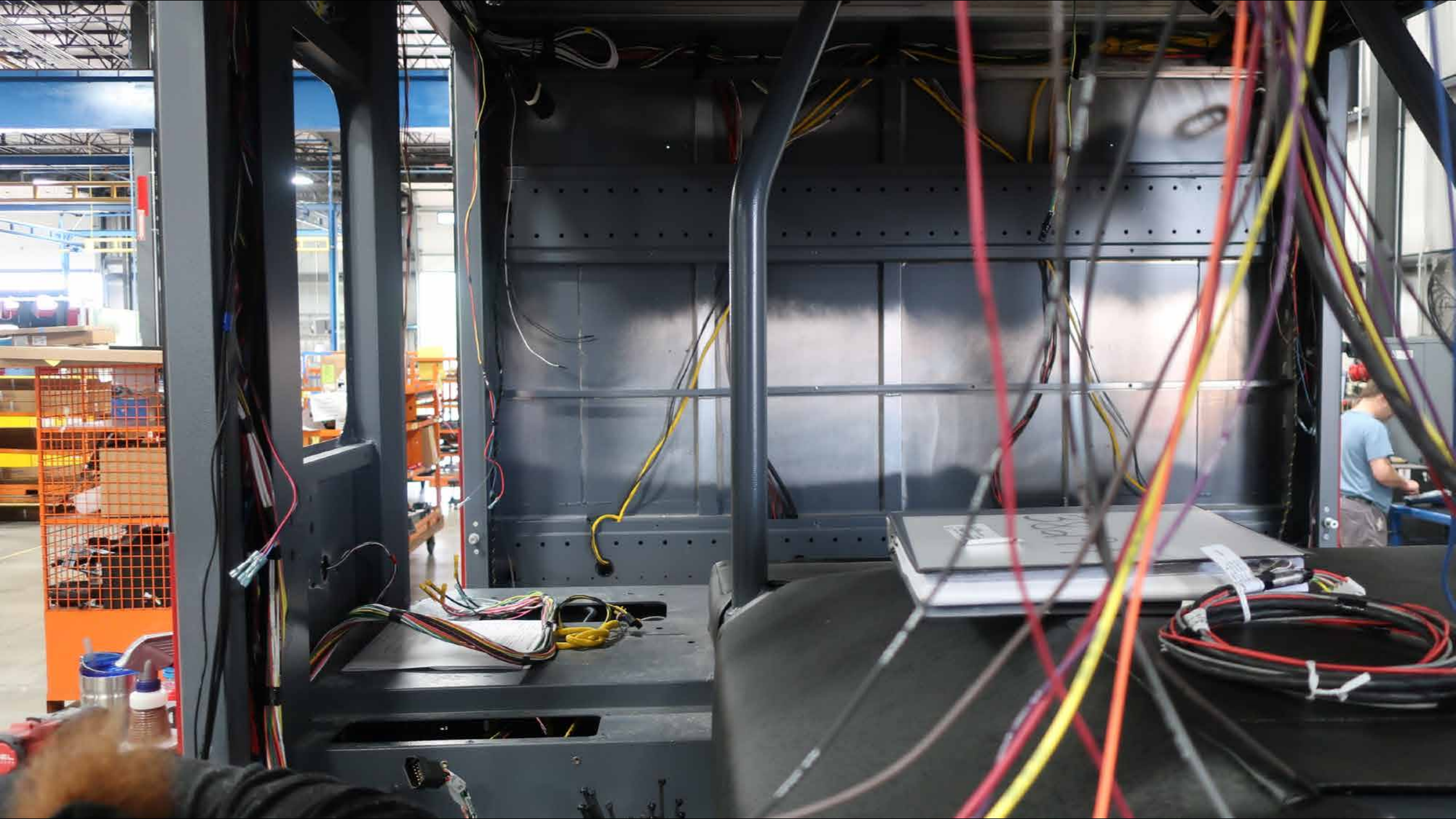
177131













38291





B11



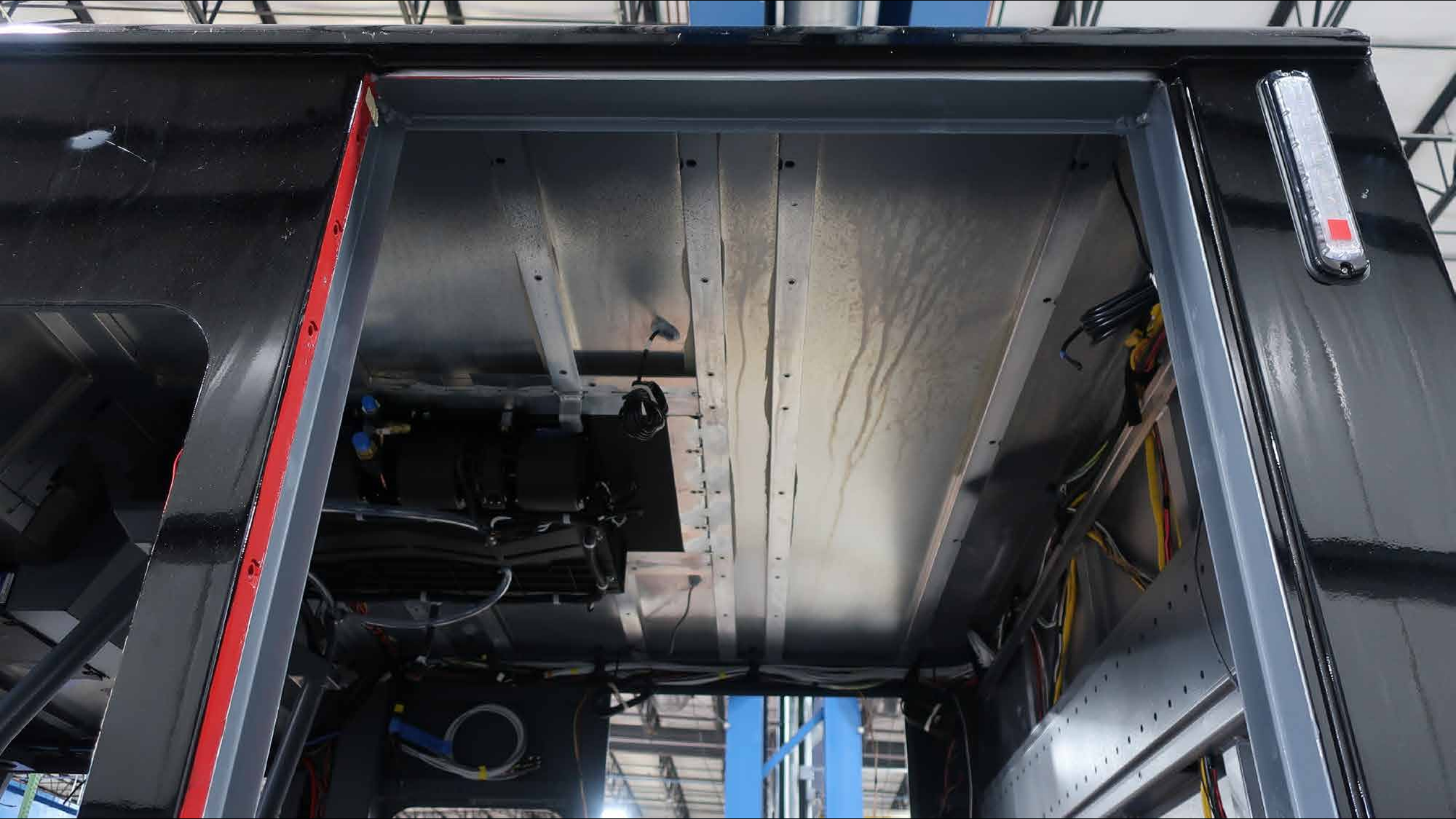
TouchNTuff
Absoll

39881
1/10

2796131



38291

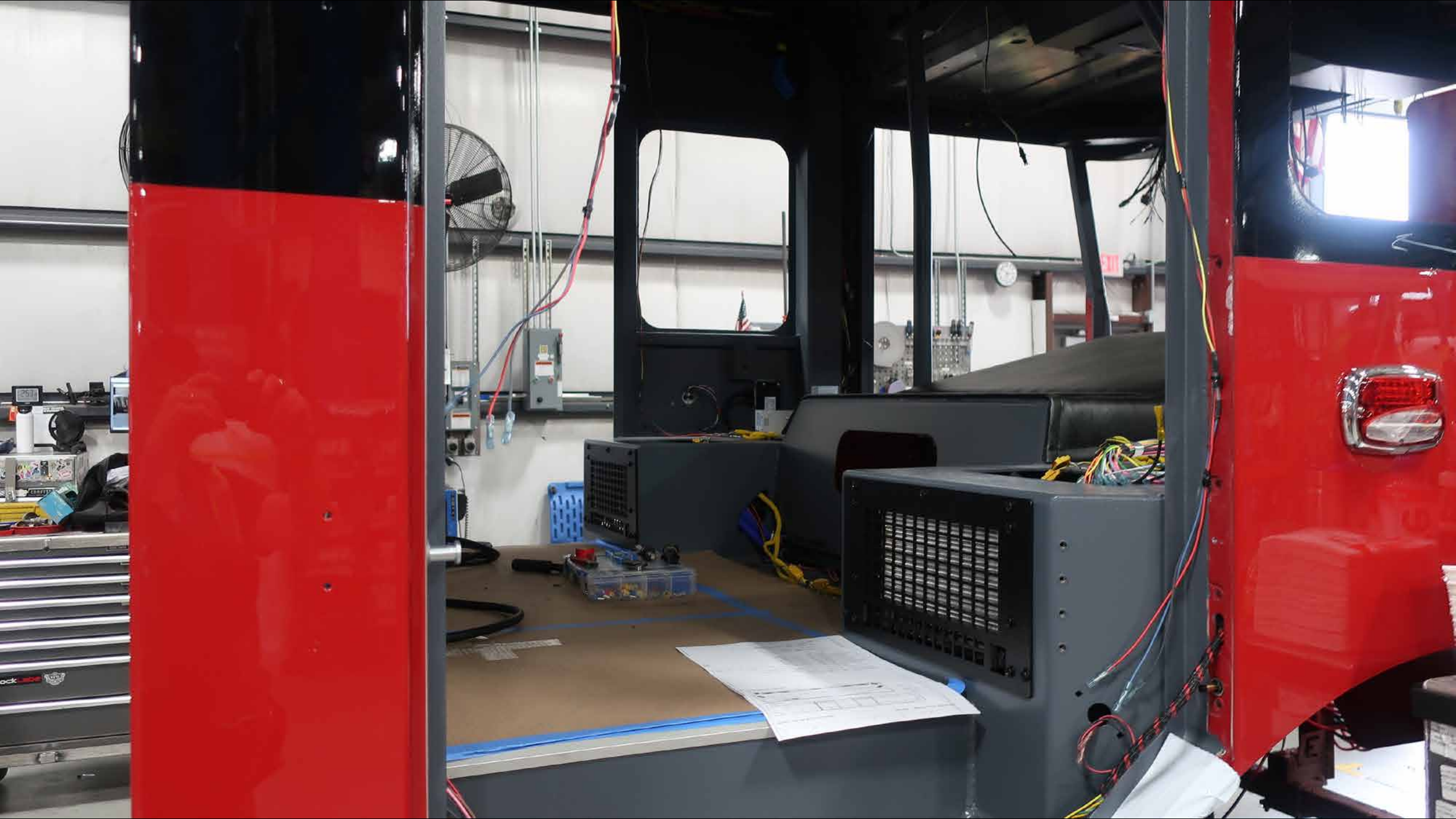


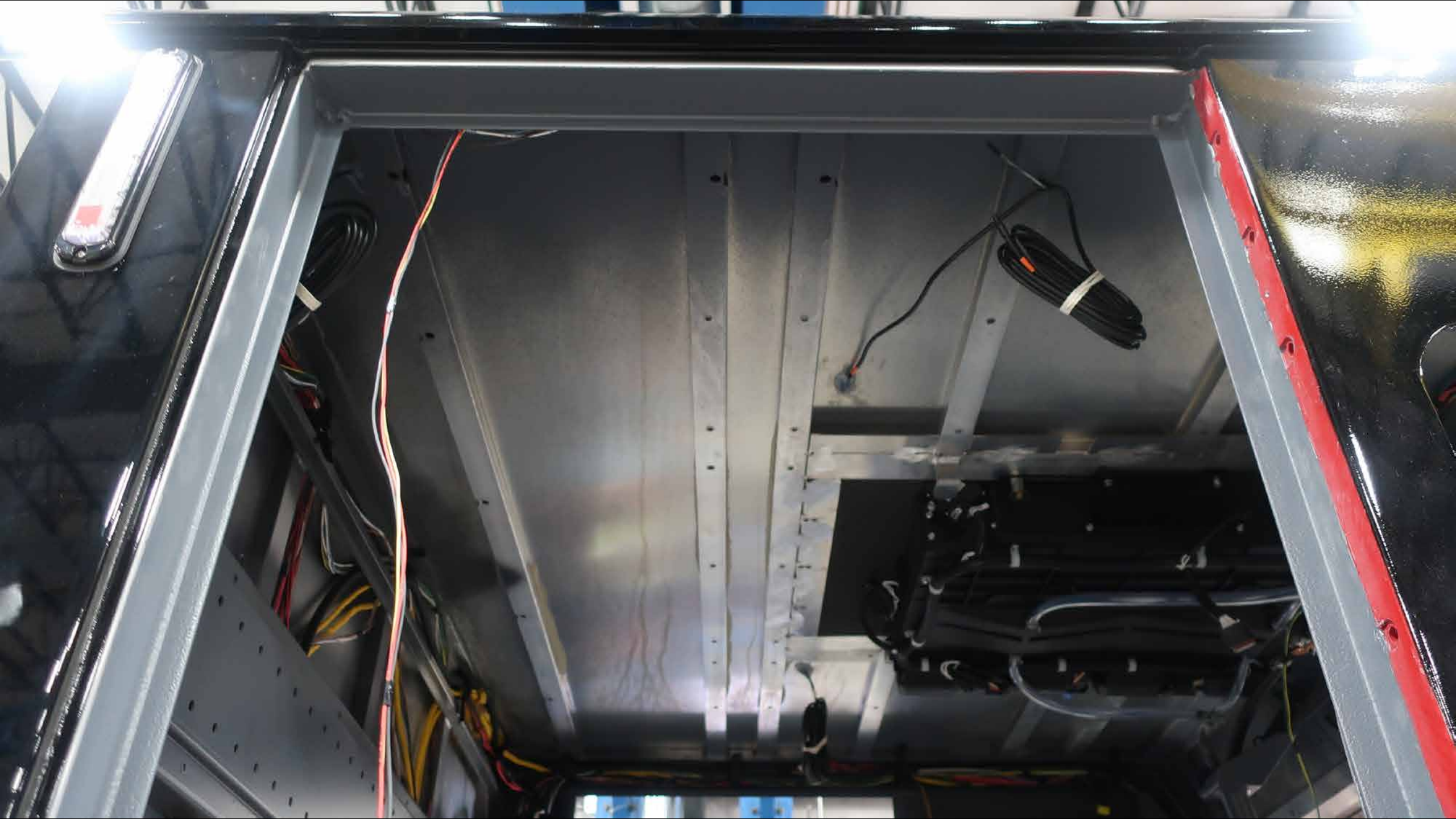


39866

39829
±10

38375











6/2/23
53779
53779

6/2/23
53779
53779



38291

385/65R22.5
M&M
MAXXIS











DANGER
CONFINED SPACE
NO ENTRY

Miller

Dynasty

5

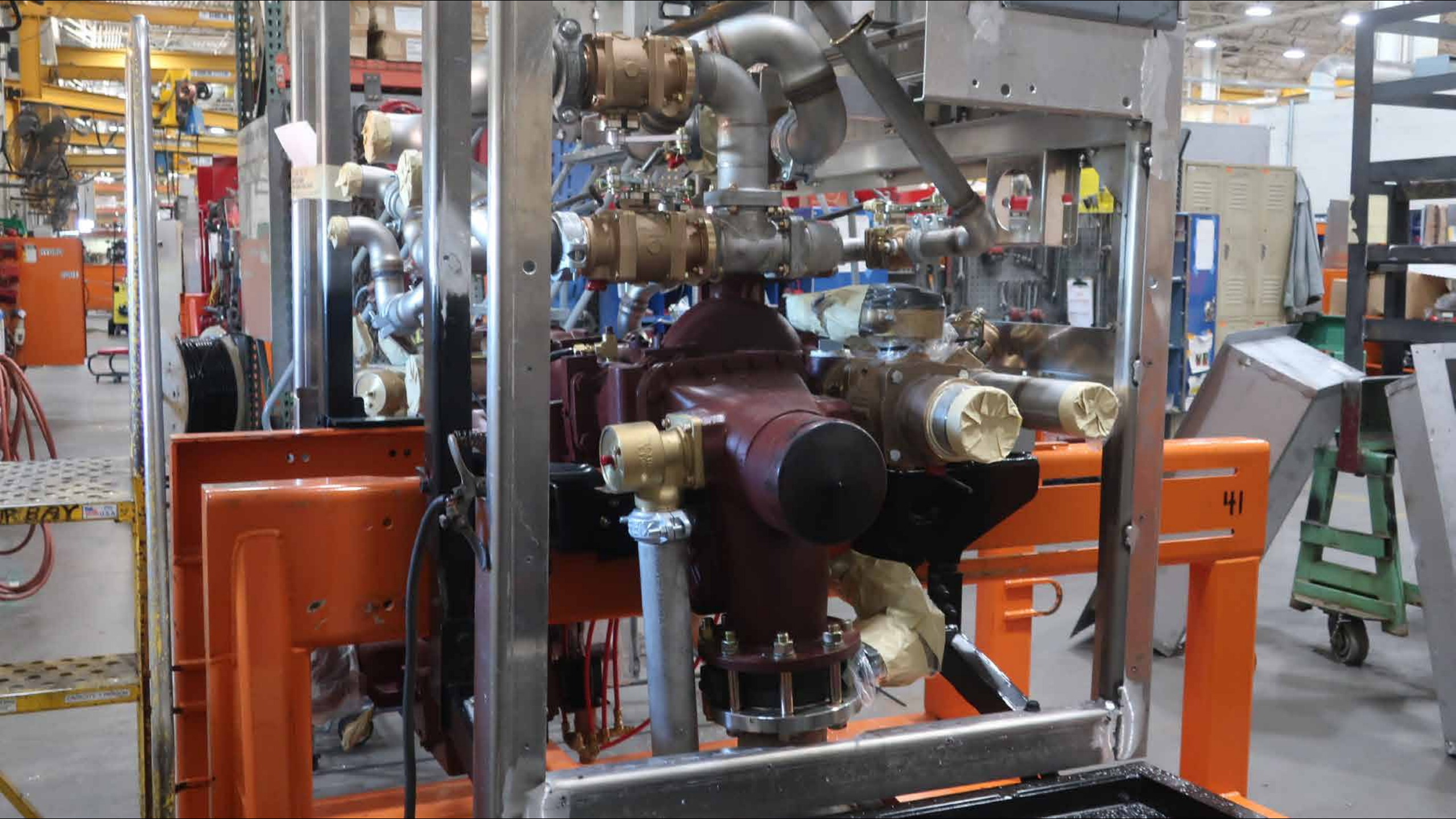
DO NOT TOUCH
TEMPERATURE
SENSITIVE



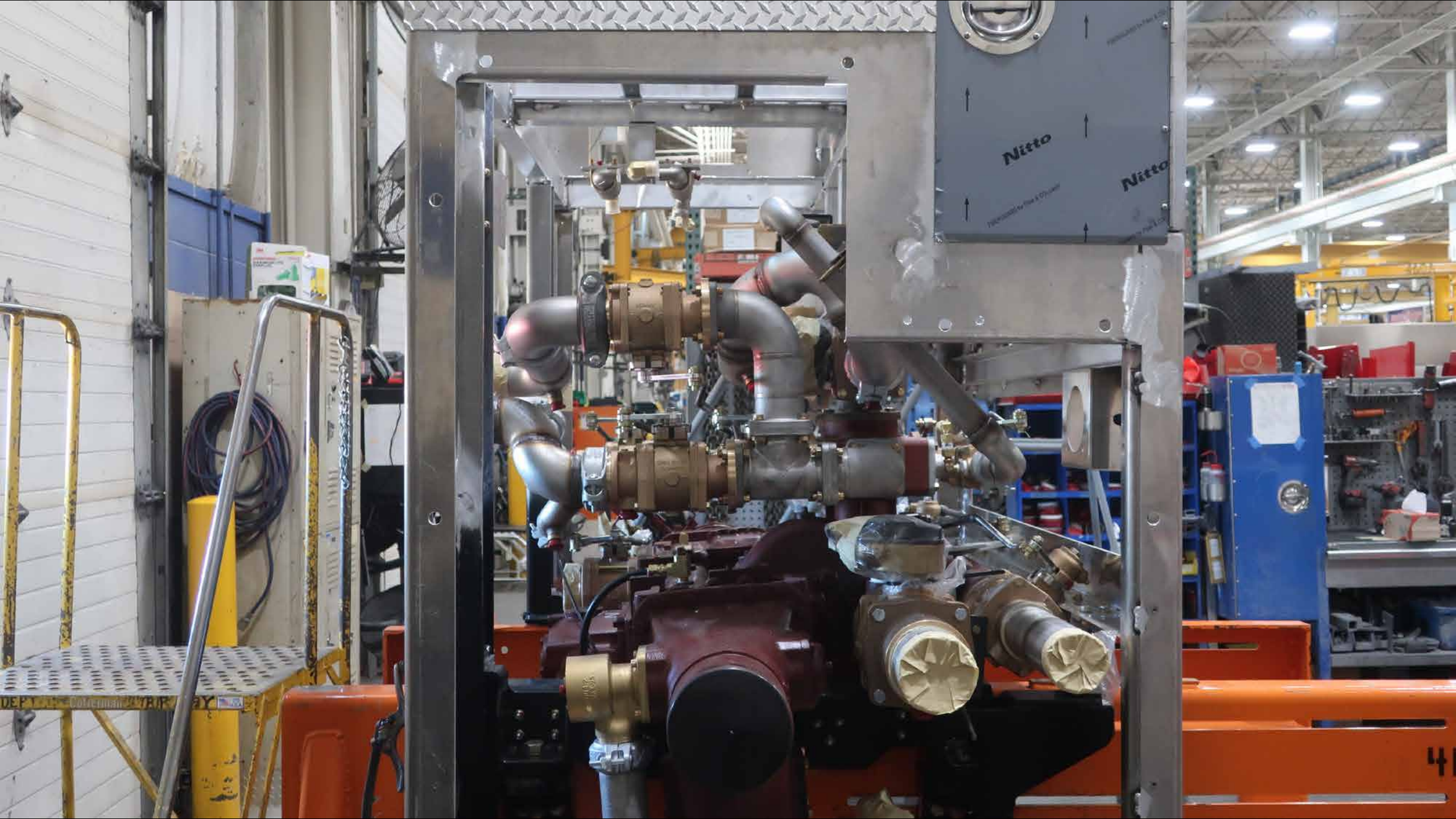


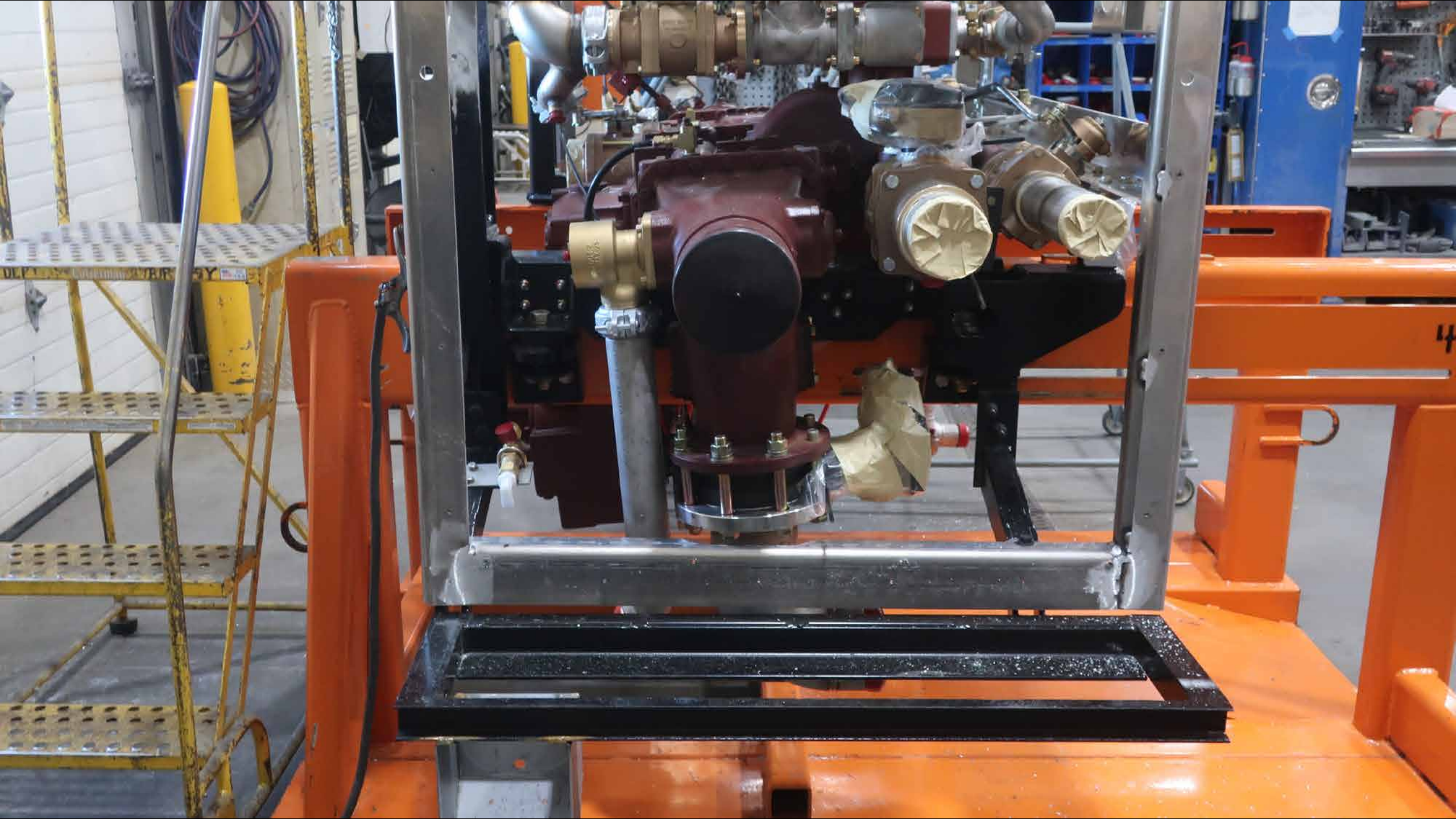
1. CIRCUIT STEP
2. CHECK FOR LEAKS
3. CHECK FOR OIL LEAKS
4. MOUNT DELUGE CONTROL BOX IN CARGO AREA

MARITIME









100G

PLEASE CLOSE
OVERHEAD
DOOR WHEN
TEMPERATURE
IS 400°F





38291

38291

38291





38291

38291
SHP



38291
SHIP



38291



HUGHES FIRE EQUIPMENT