

# Photo Album for Pierce Job 38291

## City of Bellingham, WA

### Custom Enforcer Pumper

#### Wk 6 Production ending June 28, 2024

- The pump has been mounted to the chassis and the pumper continues assembly at the 41 plant.
- The body has completed the paint process and has begun assembly at the 41 plant.



NOTICE  
FOLLOW THESE GUIDELINES  
FOR ALL OPERATIONS

38291

38291

38291



38291



Master

3811

38291



38291



STRICTLY  
CONFIDENTIAL

38291

38291

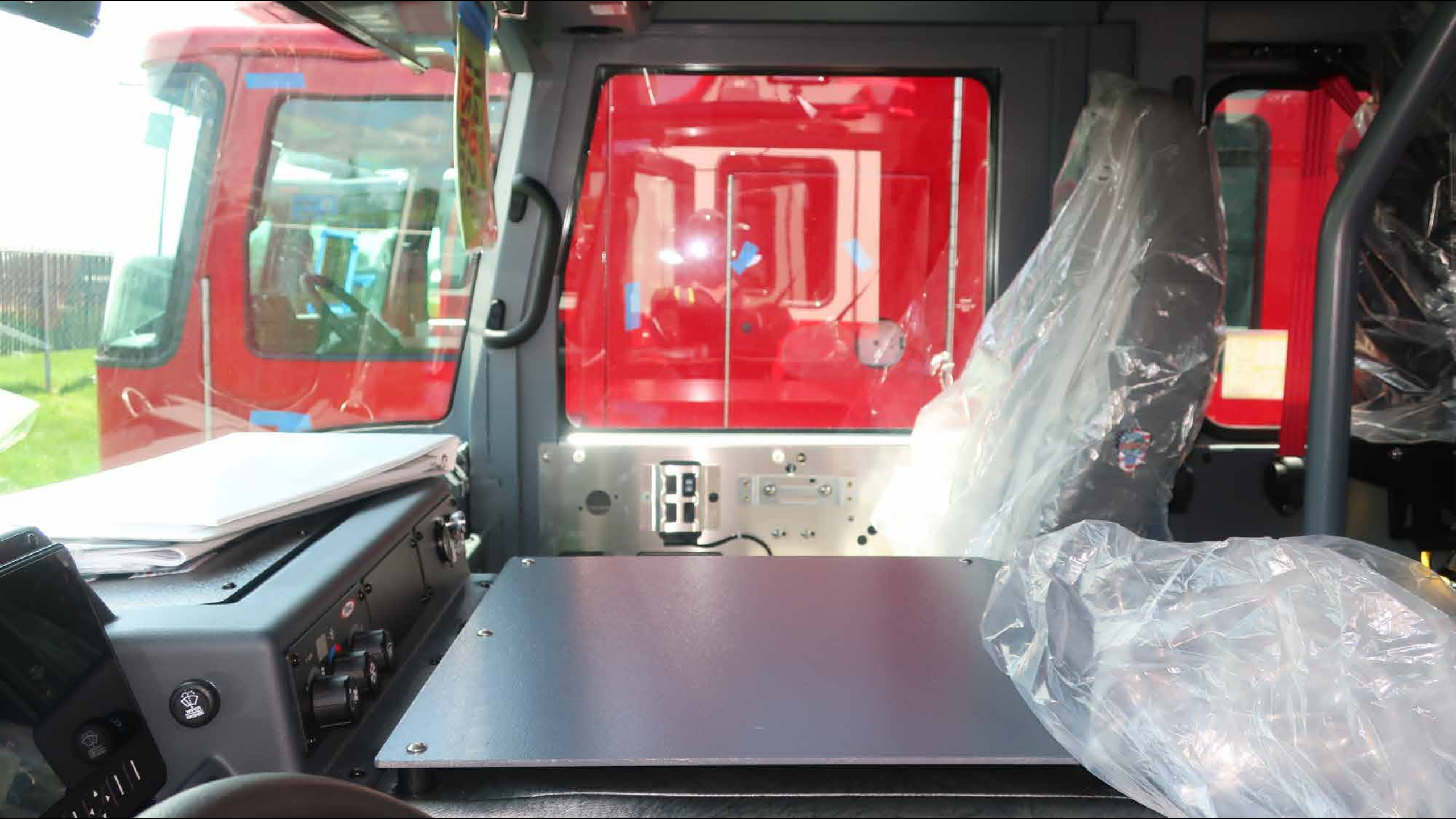
38291













Peterbilt

The instrument cluster features several gauges: a large RPM gauge (0-25 x100), a large MPH gauge (0-140), a Water temperature gauge (170-230 F), an Oil pressure gauge (0-100 PSI), a Fuel gauge (E-F), and two PSI gauges for Front and Rear Air (0-150). There are also smaller gauges for Trans (100-300) and Volts (12-16). A digital display is present in the center of the cluster.

START

IGNITION

E-M  
OFF  
PANEL  
PANEL

ON  
HI  
IDLE

OK-HI  
IDLE

ULTRA LOW SULFUR  
DIESEL FUEL ONLY







ENG BRK  
ON/OFF



ENG BRK  
LO/MED/HI



TIRE  
CHAINS



DIFF  
LOCK



MIRROR  
HEAT



DISENGA  
WHEN VEH  
OR SLIPP



Pierce

AUTO

88







EMERGENCY  
MASTER

ROOF  
LIGHT

FRONT  
WARNING

SIDE  
WARNING

UPPER  
REAR  
WARNING

LOWER  
REAR  
WARNING

HIGH  
BEAM  
FLASH

OPTICON

FRONT  
FLOOD

REAR  
FLOOD

HIGH  
BEAM

LOW  
BEAM

OPTICON

REAR  
FLOOD

FRONT  
FLOOD

WARNING LIGHTS

**EMERGENCY  
MASTER**

**ROOF  
LIGHT**

**FRONT  
WARNING**

**SIDE  
WARNING**

**UPPER  
REAR  
WARNING**

**LOWER  
REAR  
WARNING**

**HIGH  
BEAM  
FLASH**

**OPTICOM**

**FRONT  
FLOOD**

**DRIVERS  
FLOOD**

**PASS  
FLOOD**

**REAR  
FLOOD**

**DRIVERS  
ALLEY**

**PASS  
ALLEY**

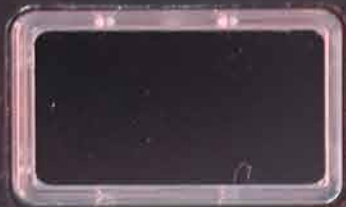
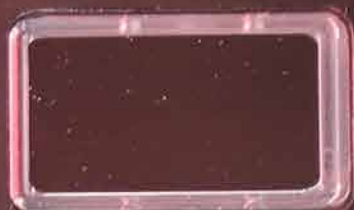
**BACKUP  
ALARM  
OVERRIDE**

**TRAFFIC  
LEFT**

**TRAFFIC  
AUX**

**TRAFFIC  
RIGHT**

**SILENT  
RUN**





Master







114021  
USDOT

NOTICE

SRS

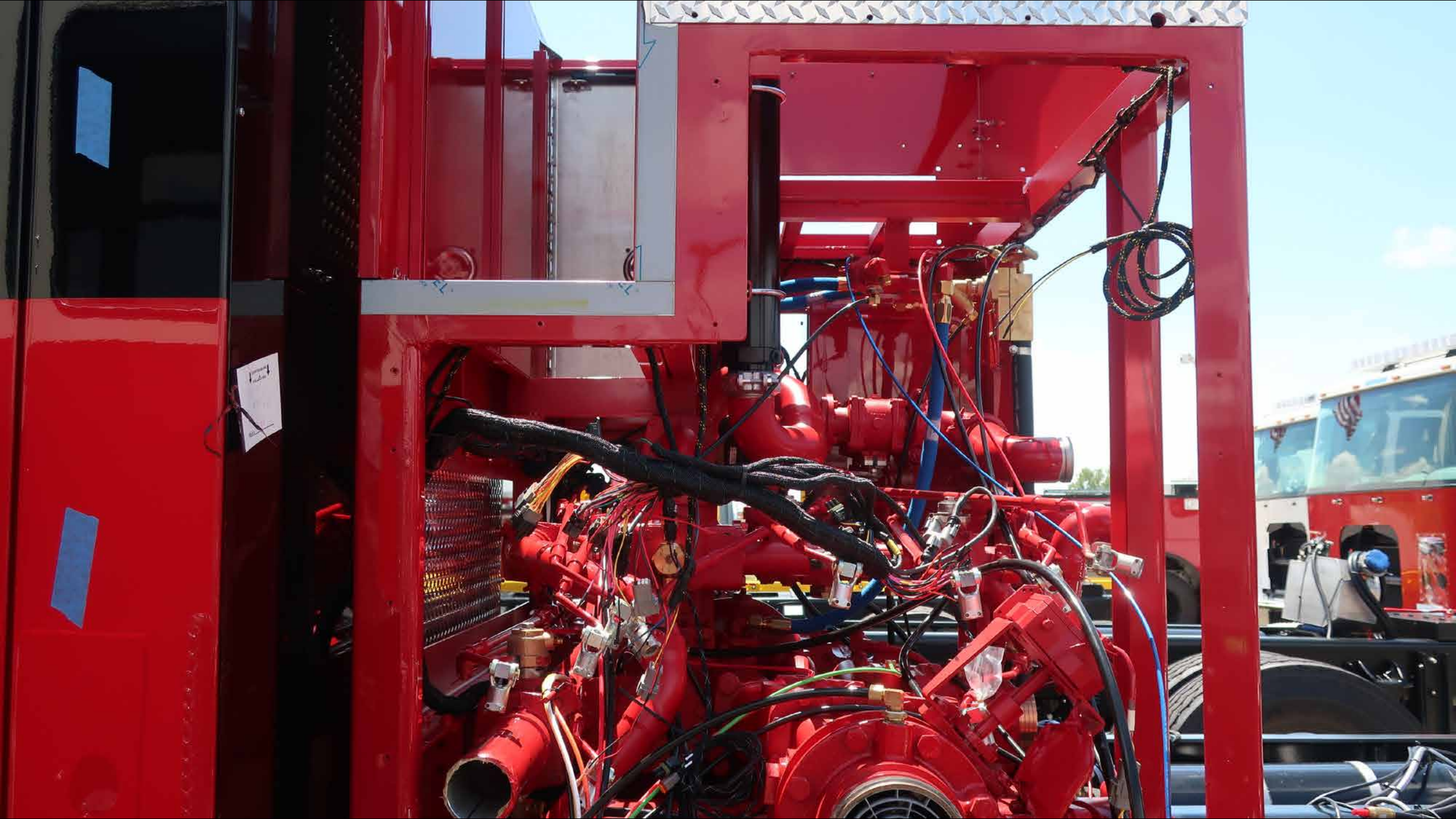


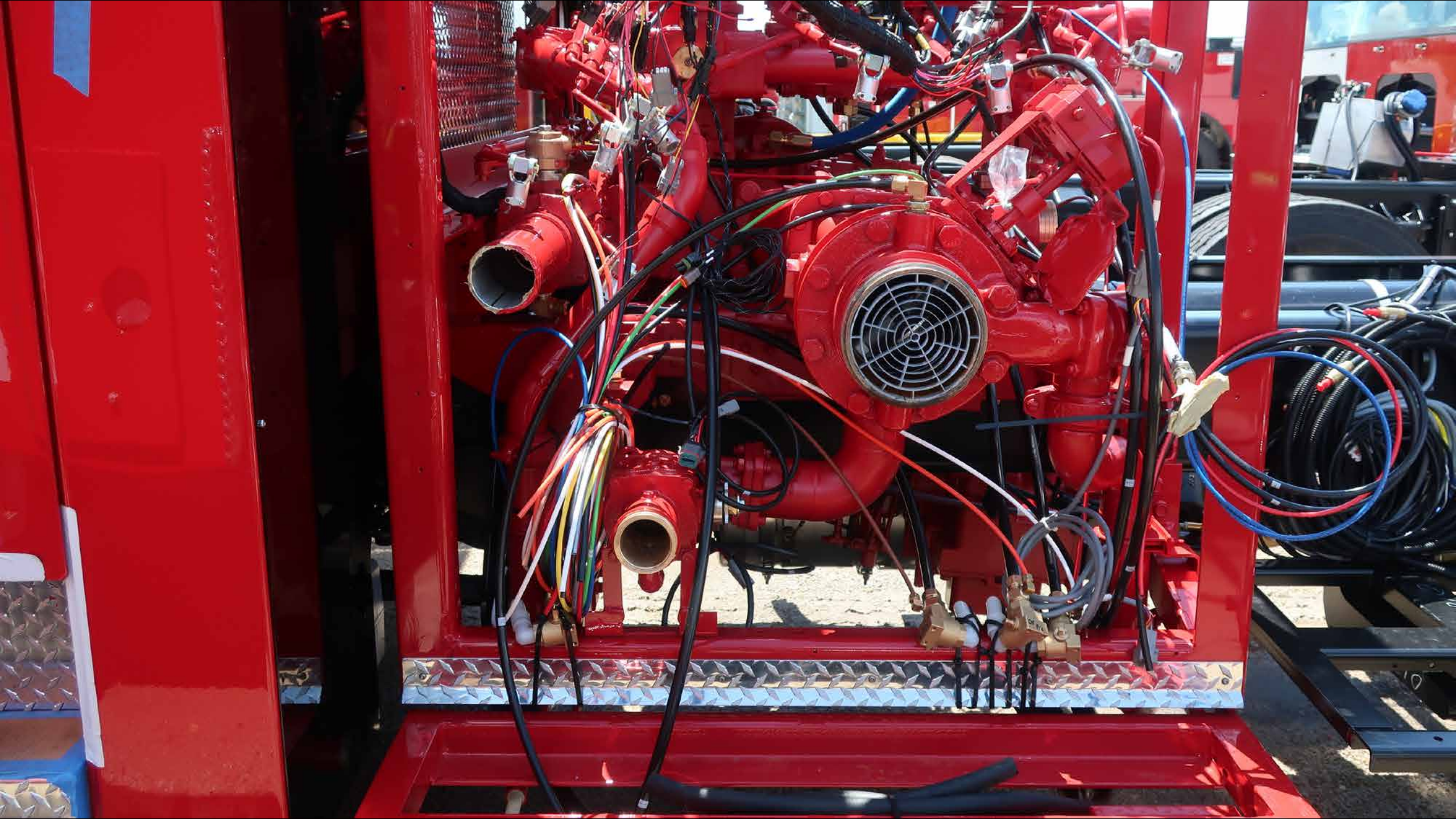


PIERCE MANUFACTURING, INC.  
114028  
USDOJ

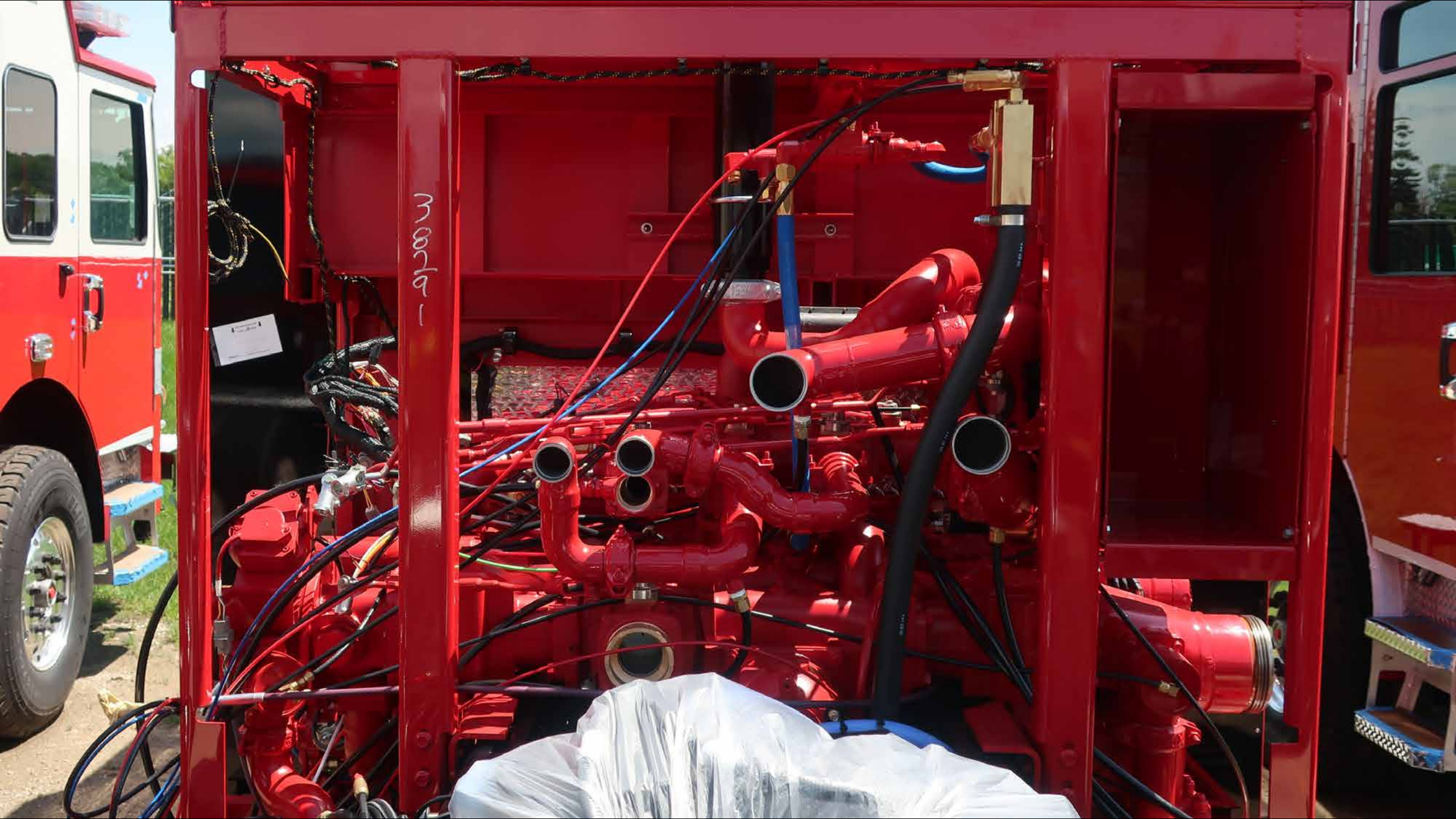
NOTICE  
FOR BEST PROTECTIVE  
EYEWEAR USE & CARE











Master





Nitto

FIBERGUARD for Fiber & CO<sub>2</sub> Laser

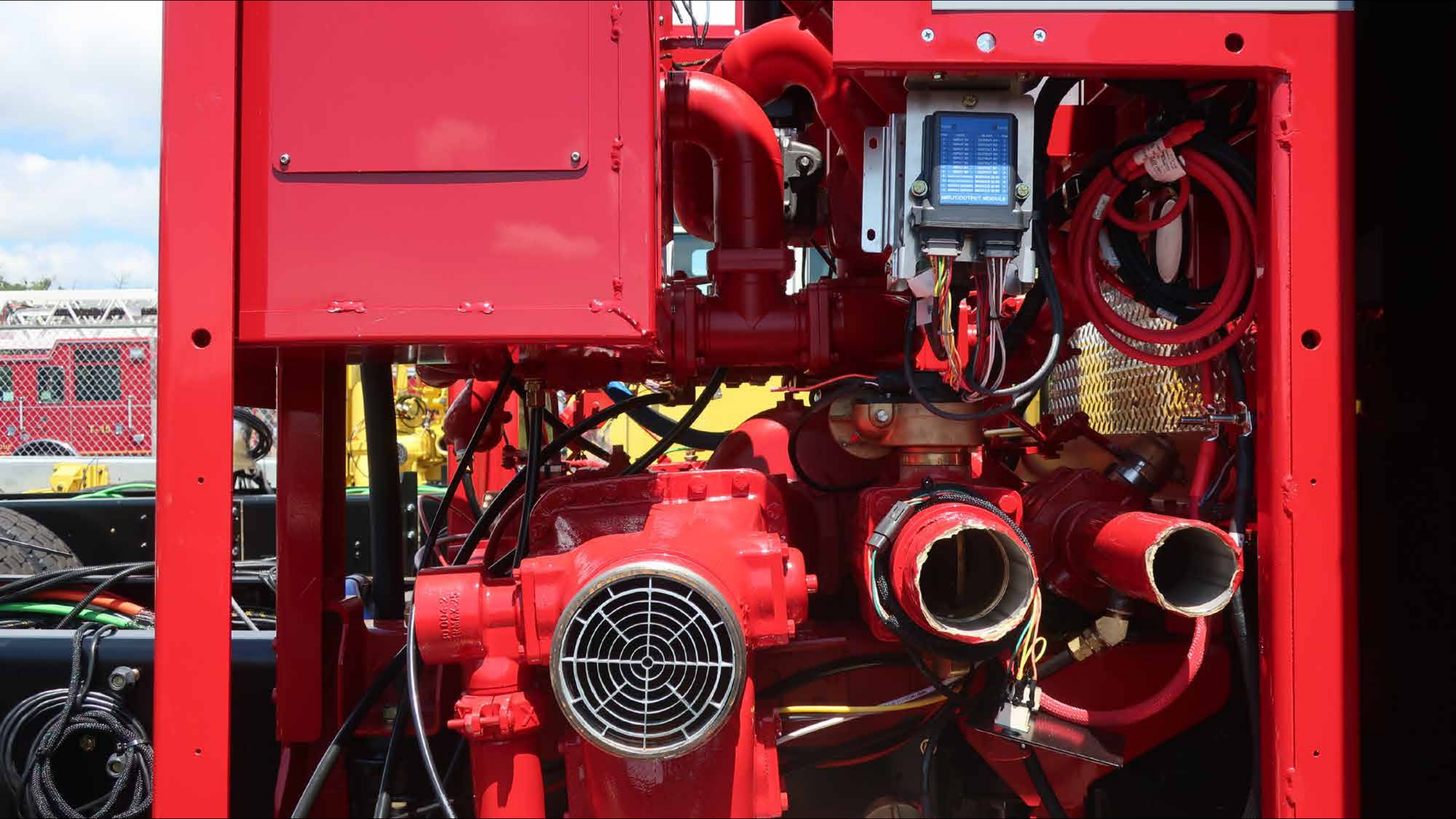
Nitto

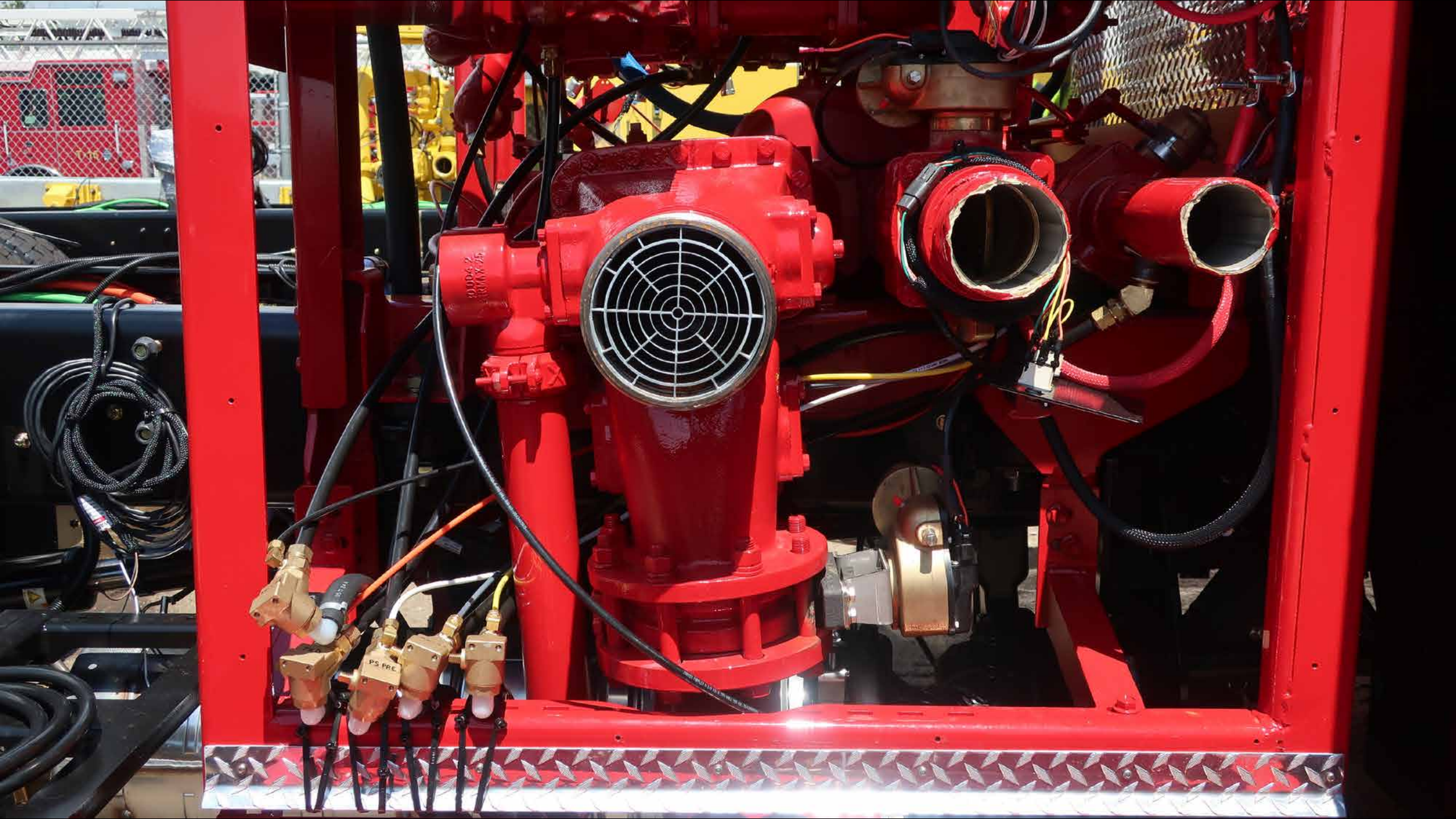
FIBERGUARD for Fiber & CO<sub>2</sub> Laser

FIBERGUARD for Fiber & CO<sub>2</sub> Laser

INPUT/OUTPUT MODULE























WARNING  
DO NOT OPERATE  
THIS EQUIPMENT  
UNLESS YOU  
ARE TRAINED  
AND LICENSED  
TO DO SO  
Lic 1/15/16

WARNING  
DO NOT OPERATE  
THIS EQUIPMENT  
UNLESS YOU  
ARE TRAINED  
AND LICENSED  
TO DO SO  
Lic 1/15/16

WARNING  
DO NOT OPERATE  
THIS EQUIPMENT  
UNLESS YOU  
ARE TRAINED  
AND LICENSED  
TO DO SO  
Lic 1/15/16

WARNING  
DO NOT OPERATE  
THIS EQUIPMENT  
UNLESS YOU  
ARE TRAINED  
AND LICENSED  
TO DO SO  
Lic 1/15/16

PIERCE MANLY ACQUISITION  
820-280-1140

NOTICE  
PROTECTION  
LABOR & OR



**WARNING DO NOT REMOVE**  
 SPARE WIRING BEHIND PANEL

MISS FLOOR  
 MISS FLOOR  
 MISS FLOOR  
 MISS FLOOR  
 MISS ALLEY  
 SWITCH WIRE

**WARNING DO NOT REMOVE**  
 SPARE WIRING BEHIND PANEL

OPTION # 0599317  
 WIRE # Caidon Cable  
 TERMINATION TYPE Cable  
 TERM LOC Loc 6  
 VERIFICATION CLOCK 151006

**WARNING DO NOT REMOVE**  
 SPARE WIRING BEHIND PANEL

OPTION # 0636439  
 WIRE # 8662/1022/1029  
 TERMINATION TYPE Cust. Radio  
 TERM LOC Loc 6 / OH  
 VERIFICATION CLOCK 151006

**WARNING DO NOT REMOVE**  
 SPARE WIRING BEHIND PANEL



**FRONT  
FLOOD**

**DRIVERS  
FLOOD**

**PASS  
FLOOD**

**REAR  
FLOOD**

**DRIVERS  
ALLEY**

**SIREN  
BRAKE**

**PASS  
ALLEY**

**SPEEDOMETER**







38291

38291

NOVACEEL  
The Novacel Solution  
for ASER Fibers & Co.









MODULE  
LINE  
STATION 4

ORGE

30 YEAR  
WARRANTY  
MADE IN USA



38291

38291

LINE 01A

LINE 01A



38291

3827

LINE 01A

MODULE LINE  
STATION 4



**HUGHES FIRE EQUIPMENT**