

Photo Album for Pierce Job 38291  
City of Bellingham, WA  
Custom Enforcer Pumper

Wk 7 Production ending July 5, 2024

- The body has been mounted to the chassis and the pumper continues assembly at the 41 plant.



















30291

Pierce

30

Nitro







Polaris



START

IGNITION

E-H

OFF

PANEL

ON

HI IDLE

ON-HI IDLE

ULTRA LOW SULFUR DIESEL FUEL ONLY







ENG BRK  
ON/OFF

ENG BRK  
LO/MED/HI

TIRE  
CHAINS

DIFF  
LOCK

MIRROR  
HEAT



W/SLIP  
OR SLIP



Pierce

AUTO

88

WIPER WASH

MIRROR AT

AC





EMERGENCY  
MASTER

ROOF  
LIGHT

FRONT  
WARNING

SIDE  
WARNING

UPPER  
REAR  
WARNING

LOWER  
REAR  
WARNING

HIGH  
REAR  
FLASH

OFFICER

FRONT  
PASS

FRONT  
PASS

FRONT  
PASS

FRONT  
PASS

FRONT  
PASS

FRONT  
PASS

FRONT  
PASS

FRONT  
PASS

FRONT  
PASS

FRONT  
PASS

FRONT  
PASS

FRONT  
PASS

FRONT  
PASS

FRONT  
PASS

**EMERGENCY  
MASTER**

**ROOF  
LIGHT**

**FRONT  
WARNING**

**SIDE  
WARNING**

**UPPER  
REAR  
WARNING**

**LOWER  
REAR  
WARNING**

**HIGH  
BEAM  
FLASH**

**OPTICOM**

**FRONT  
FLOOD**

**DRIVERS  
FLOOD**

**PASS  
FLOOD**

**REAR  
FLOOD**



**DRIVERS  
ALLEY**

**PASS  
ALLEY**

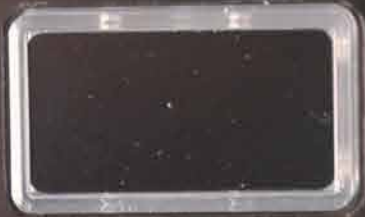
**BACKUP  
ALARM  
OVERRIDE**

**TRAFFIC  
LEFT**

**TRAFFIC  
AUX**

**TRAFFIC  
RIGHT**

**SILENT  
RUN**



CAB LOCKS  
NOT  
ENGAGED

LOAD  
MANAGER





30291













114023  
USDOT

POLICE

88

SRS



PIERCE MANUFACTURING COMPANY  
114025  
USDOT

NOTICE  
PLEASE READ THESE INSTRUCTIONS  
BEFORE USING THIS EQUIPMENT







REEL BLOWOUT

AKRON



Row of seven analog gauges with blue faces and white handles, and a digital display on the left.

Row of four analog gauges, a digital display, a pressure gauge, and a control panel with a red emergency stop button.



GARUM  
Rim of Pump

PRIMER FRONT INTAKE  
PRIMER FIRE PUMP



Red fire hydrant nozzle with a black handle.

Control panel with a large handle, a CAUTION label, and several indicator lights.





FRONT INLET



DECK GUN

**INTAKE RELIEF VALVE**

- PULL KNOB OUT TO ADJUST.
- TURN TO CHANGE SET PRESSURE.
- PUSH KNOB IN TO LOCK.

**TRIDENT**

PULL TO UNLOCK

FLAME HOT WHEN LIT

PUSH TO TEST

**HALE TRV-L**



PRIMER



DECK GUN

PRIMER

PRIMER

REEL DISCHARGE

**PUMP  
DRAIN**  
PULL TO DRAIN  
  
DO NOT OPEN OR CLOSE  
UNDER PRESSURE



PULL TO OPEN

PULL TO OPEN

PULL TO OPEN

**CAUTION**  
PLACE CAB SHIFT IN NEUTRAL  
PUSH FOR ROAD  
PULL FOR PUMP

MANUAL  
PUMP SHIFT

FRONT INLET  
AIR BLEED

DRIVER MAIN INLET  
AIR BLEEDER

PULL TO OPEN

DRIVER SIDE  
AUX. INLET

2 IN 10  
MINOR







Do not swing open

Do not swing open









Nitto

Application for 1/2" Stud



Emergency Key by Fire



Nitto

Nitto

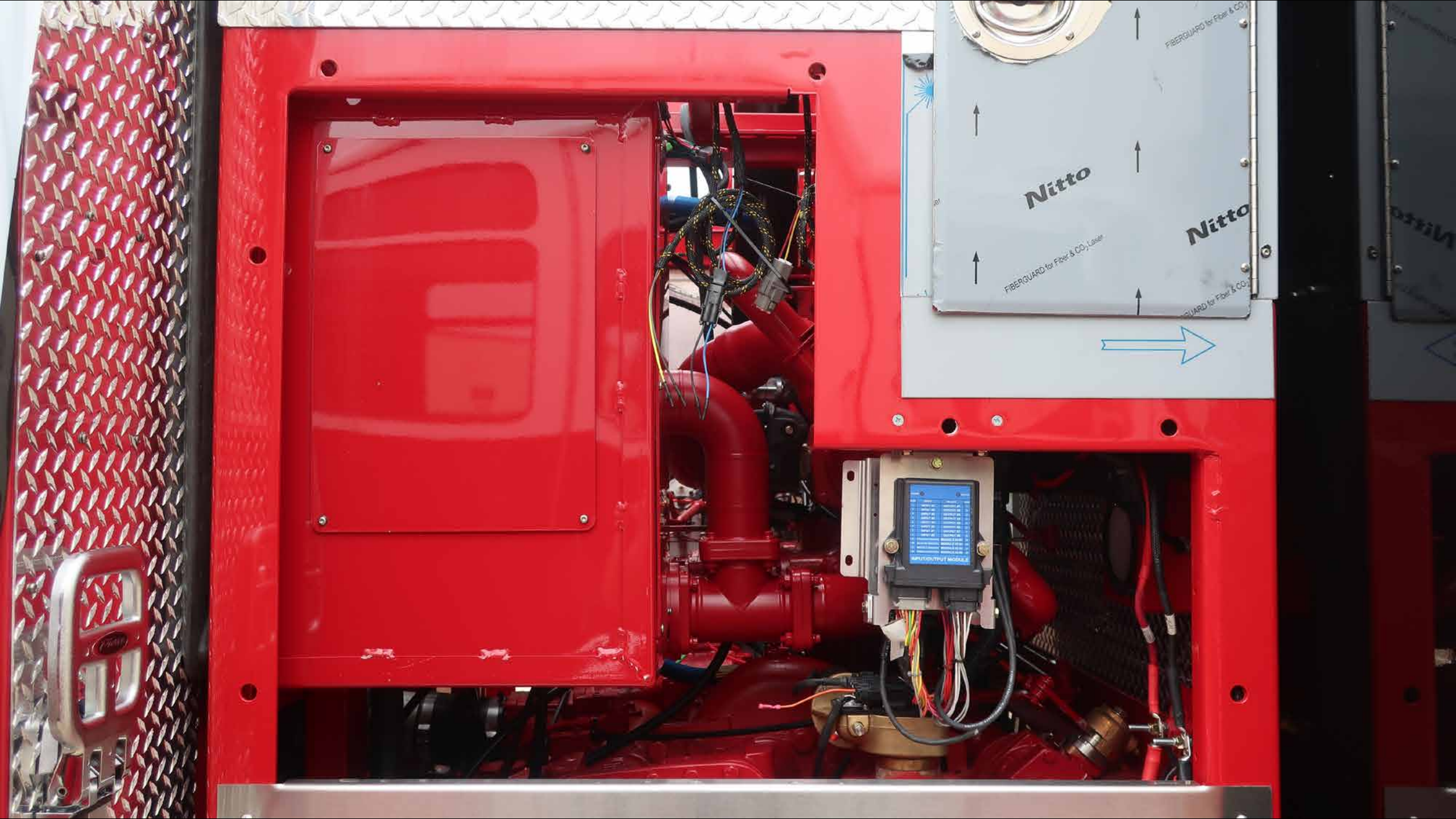
Nitto

Nitto

Nitto

Nitto





Nitto

Nitto

FIBERGUARD for Fiber & CO<sub>2</sub> Laser

FIBERGUARD for Fiber & CO<sub>2</sub> Laser





Pilot

WARRANTY CARD

Ground Rings  
At Panel





















AIR HORN



WARNING DO NOT REMOVE  
SPARE WIRING BEHIND PANEL  
OPTION # 0599317  
WIRE # 8662/1022/2129  
TERMINATION TYPE Cable  
TERM LOC. Loc 6/0H  
VERIFICATION CLOCK # 151006

FRONT FLOOD	DRIVERS FLOOD	PAGE FLOOD	REAR FLOOD
DRIVERS ALARM		START BRAKE	PAGE ALLEY

WARNING DO NOT REMOVE  
SPARE WIRING BEHIND PANEL  
OPTION # 0599317  
WIRE # 8662/1022/2129  
TERMINATION TYPE Cable  
TERM LOC. Loc 6/0H  
VERIFICATION CLOCK # 151006

WARNING DO NOT REMOVE  
SPARE WIRING BEHIND PANEL  
OPTION # 0636439  
WIRE # 8662/1022/2129  
TERMINATION TYPE Cust. Radio  
TERM LOC. Loc 6/0H  
VERIFICATION CLOCK # 151006

WARNING DO NOT REMOVE  
SPARE WIRING BEHIND PANEL  
OPTION # 0636439  
WIRE # 8662/1022/2129  
TERMINATION TYPE Cust. Radio  
TERM LOC. Loc 6/0H  
VERIFICATION CLOCK # 151006

**FRONT  
FLOOD**

**DRIVERS  
FLOOD**

**PASS  
FLOOD**

**REAR  
FLOOD**

**DRIVERS  
ALLEY**

**SIREN  
BRAKE**

**PASS  
ALLEY**



**SPEEDOMETER**









**HUGHES FIRE EQUIPMENT**