

Photo Album for Pierce Job 38355

The Daniel R. Sayre Memorial Foundation, HI

Custom Enforcer HDR Pumper

Wk 5 Production ending June 14, 2024

- The cab has completed the paint process and has begun assembly at the Neenah plant.
- The chassis has begun assembly at the Neenah plant.
- The pump continues assembly at the IPP plant.
- The body has completed weld operations and is staged to begin the paint process at the IPP plant.







279131









**EMERGENCY
MASTER**

**ROOF
LIGHT**

**FRONT
WARNING**

**SIDE
WARNING**

**LOWER
REAR
WARNING**

**UPPER
REAR
WARNING**

**HIGH
BEAM
FLASH**

OPTICOM

**FRONT
FLOOD**

**DRIVER
SCENE**

**PASS
SCENE**

**REAR
SCENE**

**LOAD
MANAGER**

**ELECTRNC
SIREN**

**AIR
HORN**



38

**FRONT
FLOOD**

**DRIVER
SCENE**


**PASS
SCENE**

**REAR
SCENE**

**EMERGENCY
MASTER**



CLOCK





















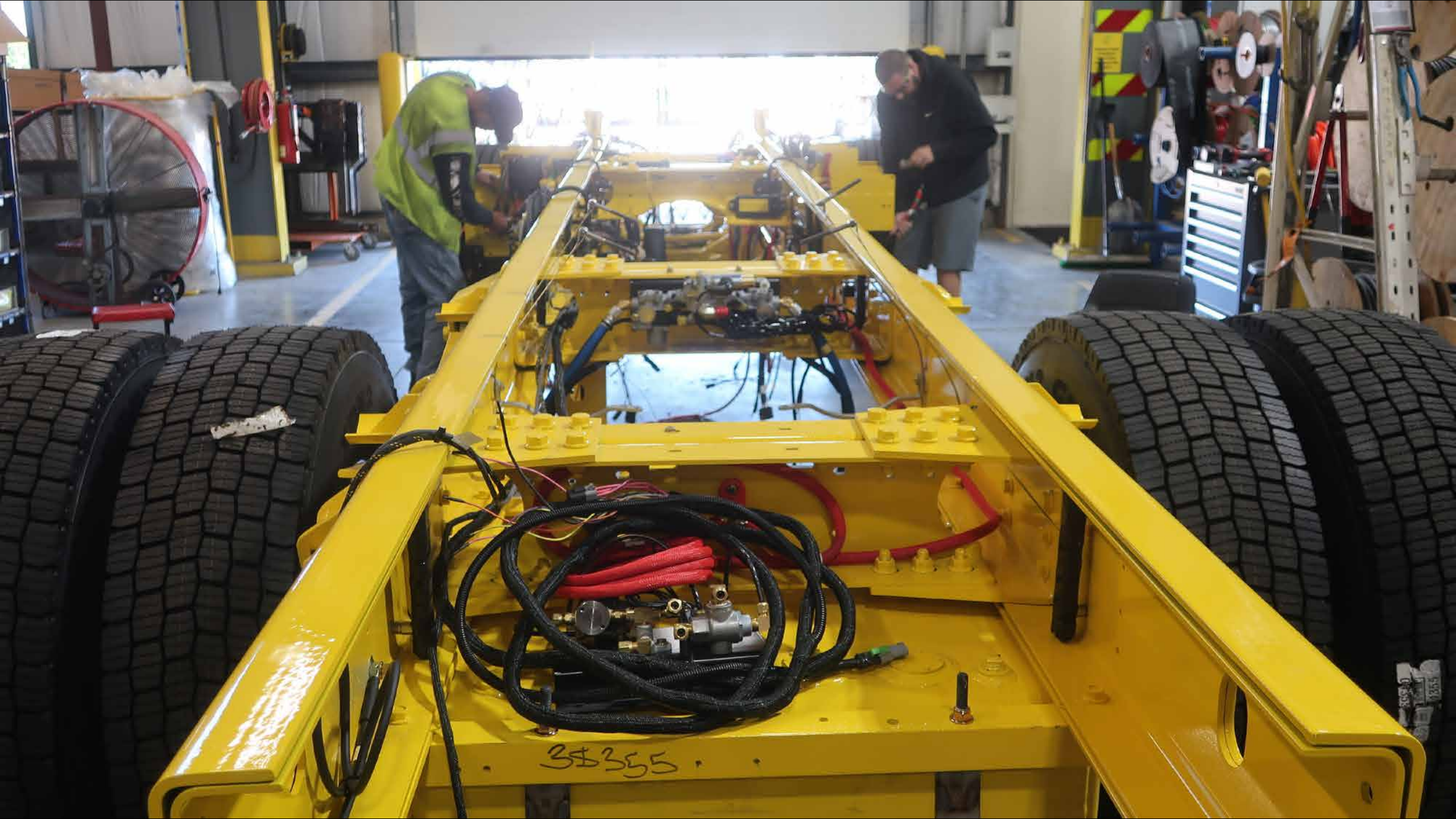


EXIT

SPILL KIT STATION

FLAMMABLE

38355



38355



38355



5-S HOUSEKEEPING

SHOVEL

BROOM



66642
66642
66642

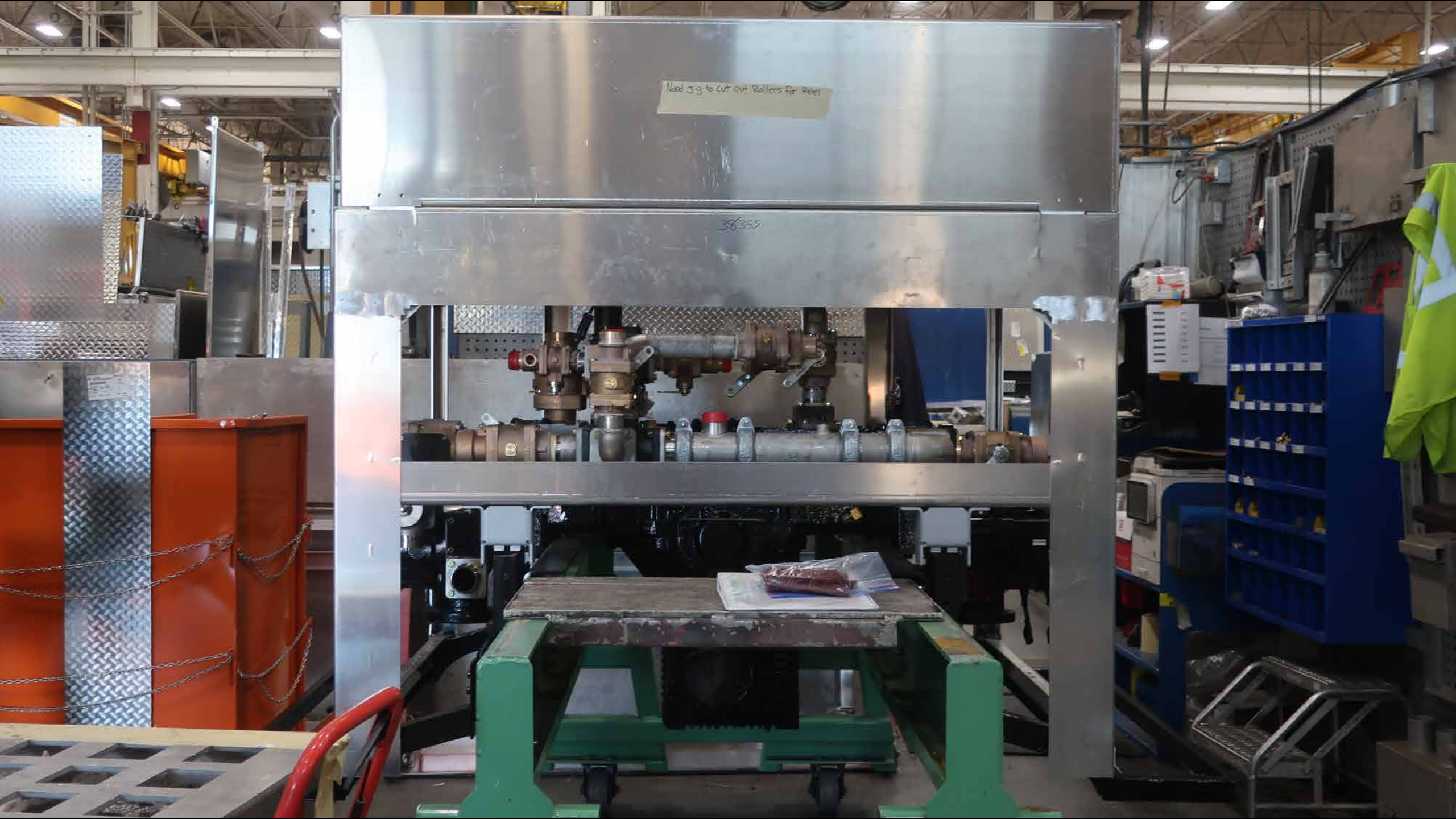
255

THE MOUNTAIN SHOWS AVE

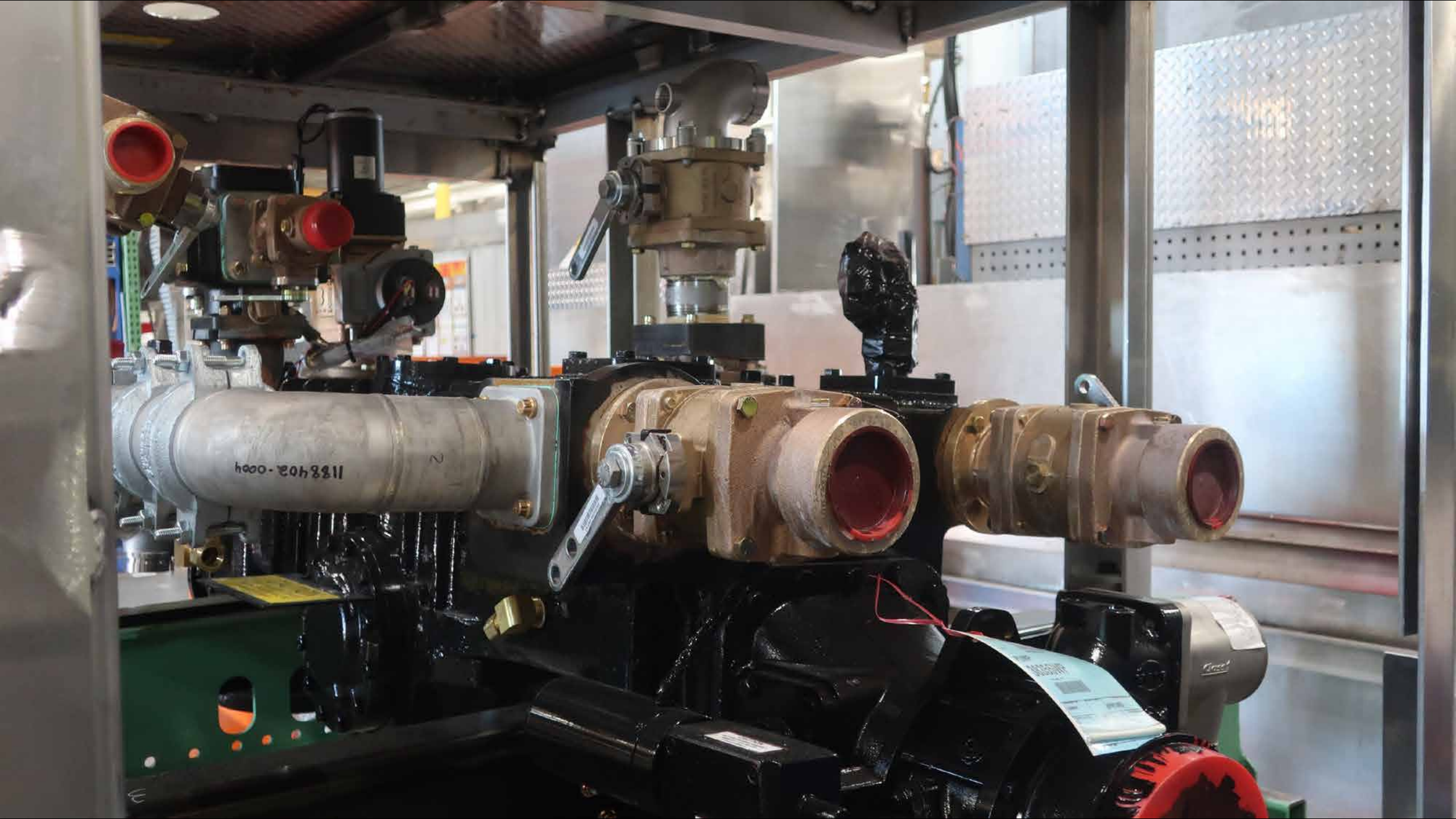
FILL

Need 3g to cut out rollers for pipe

38355











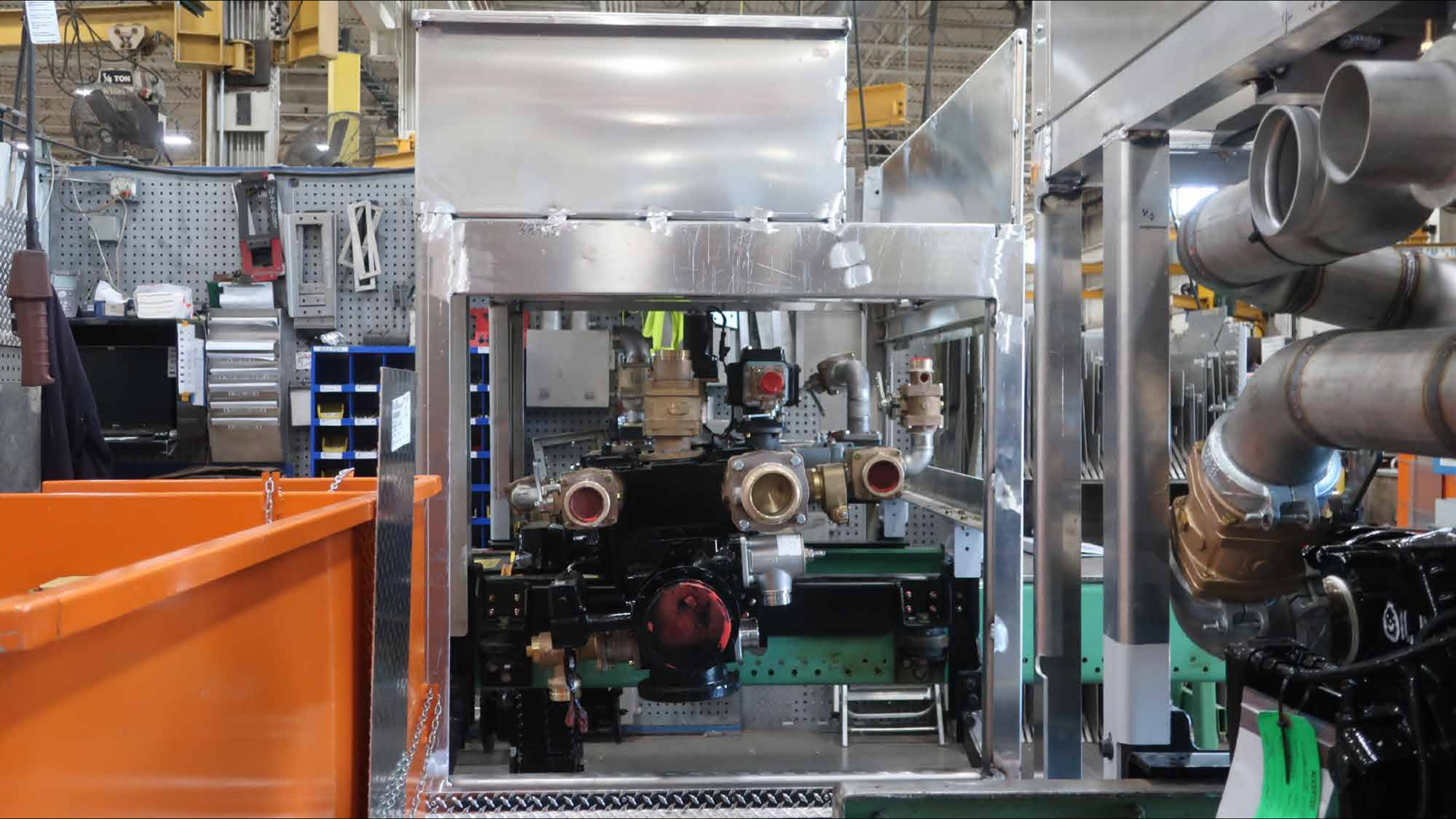


HAVE YOU

1155499-0001

CLOSED

NTRC

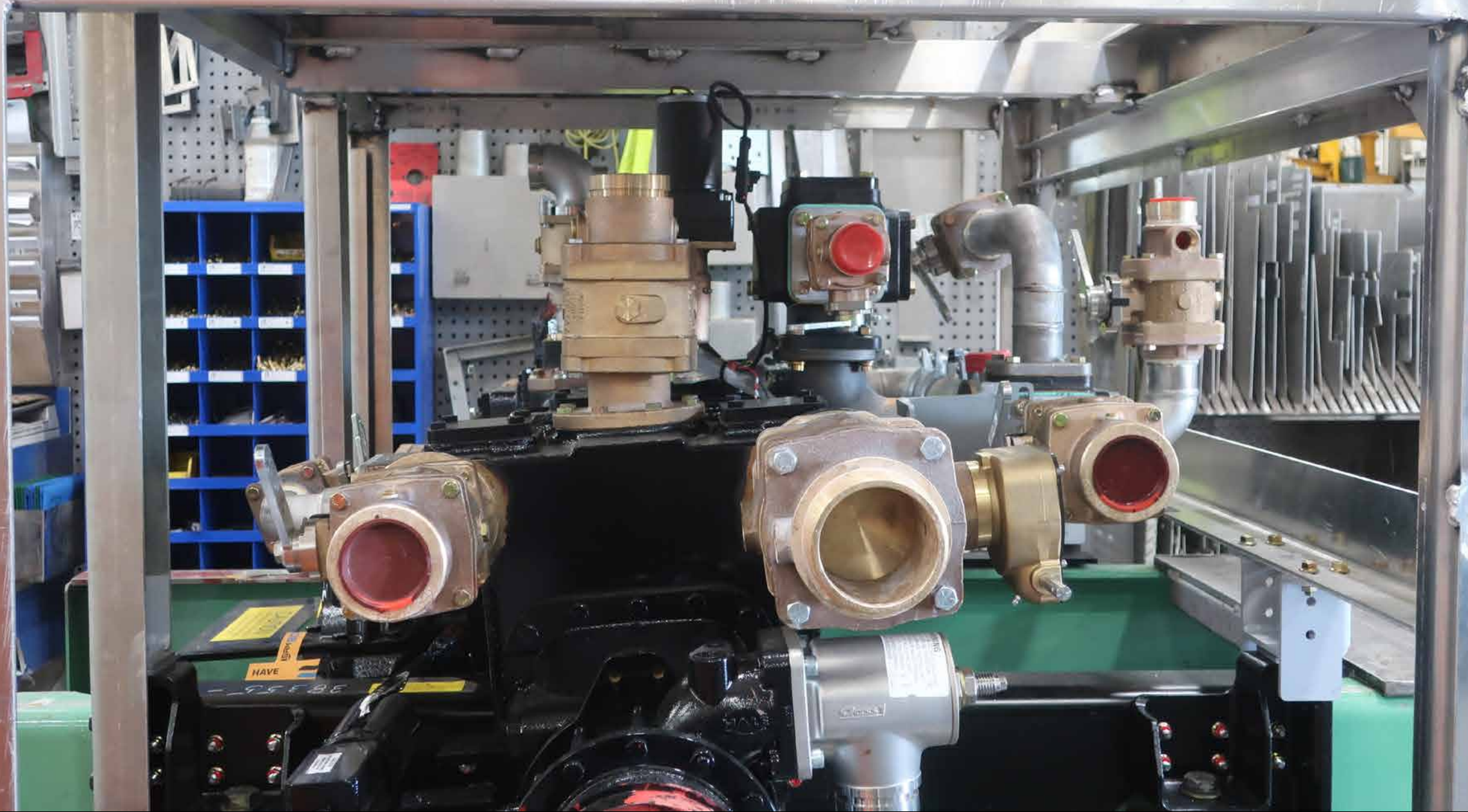


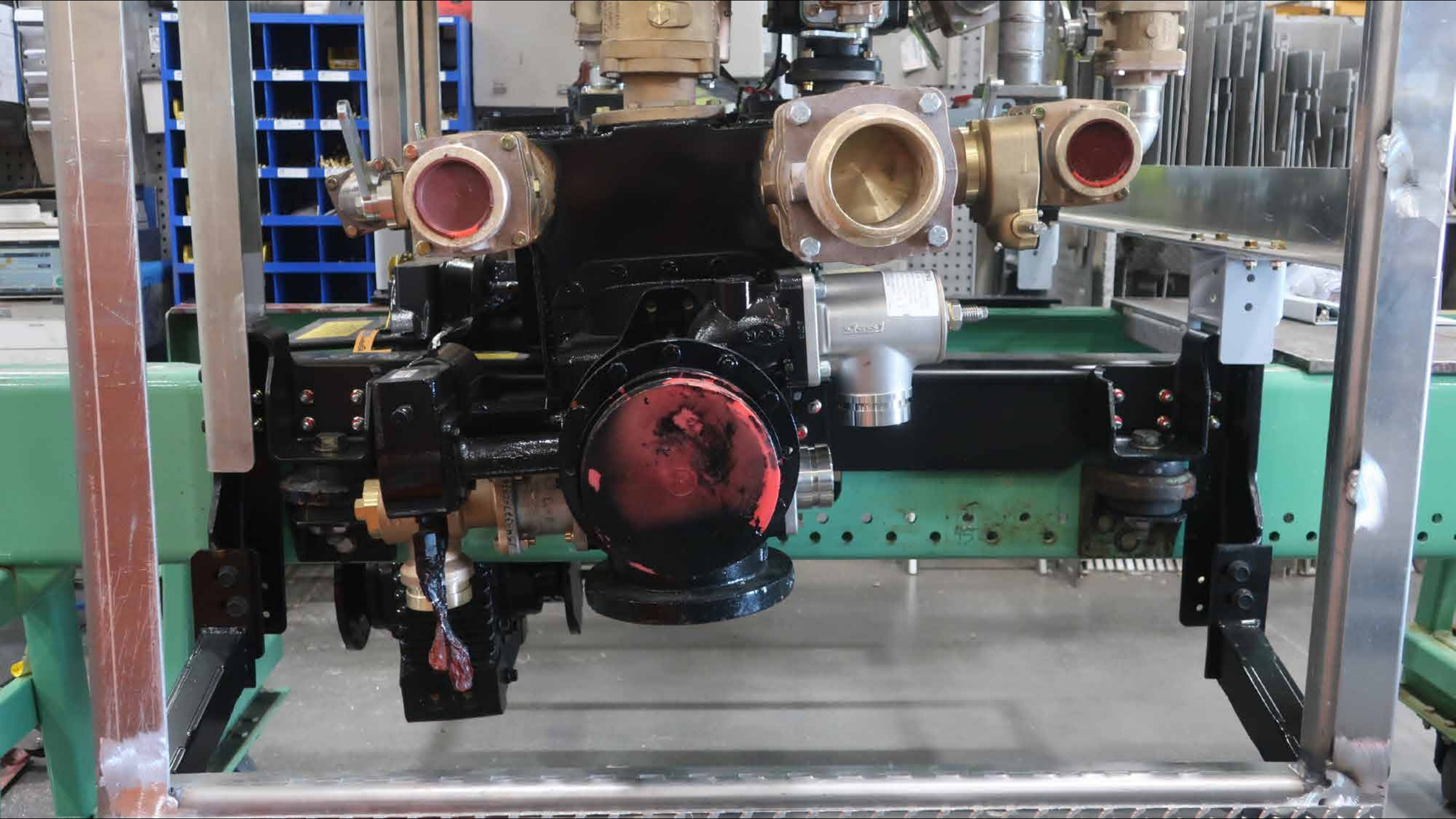
1/2 TON

V2

51

SAFETY





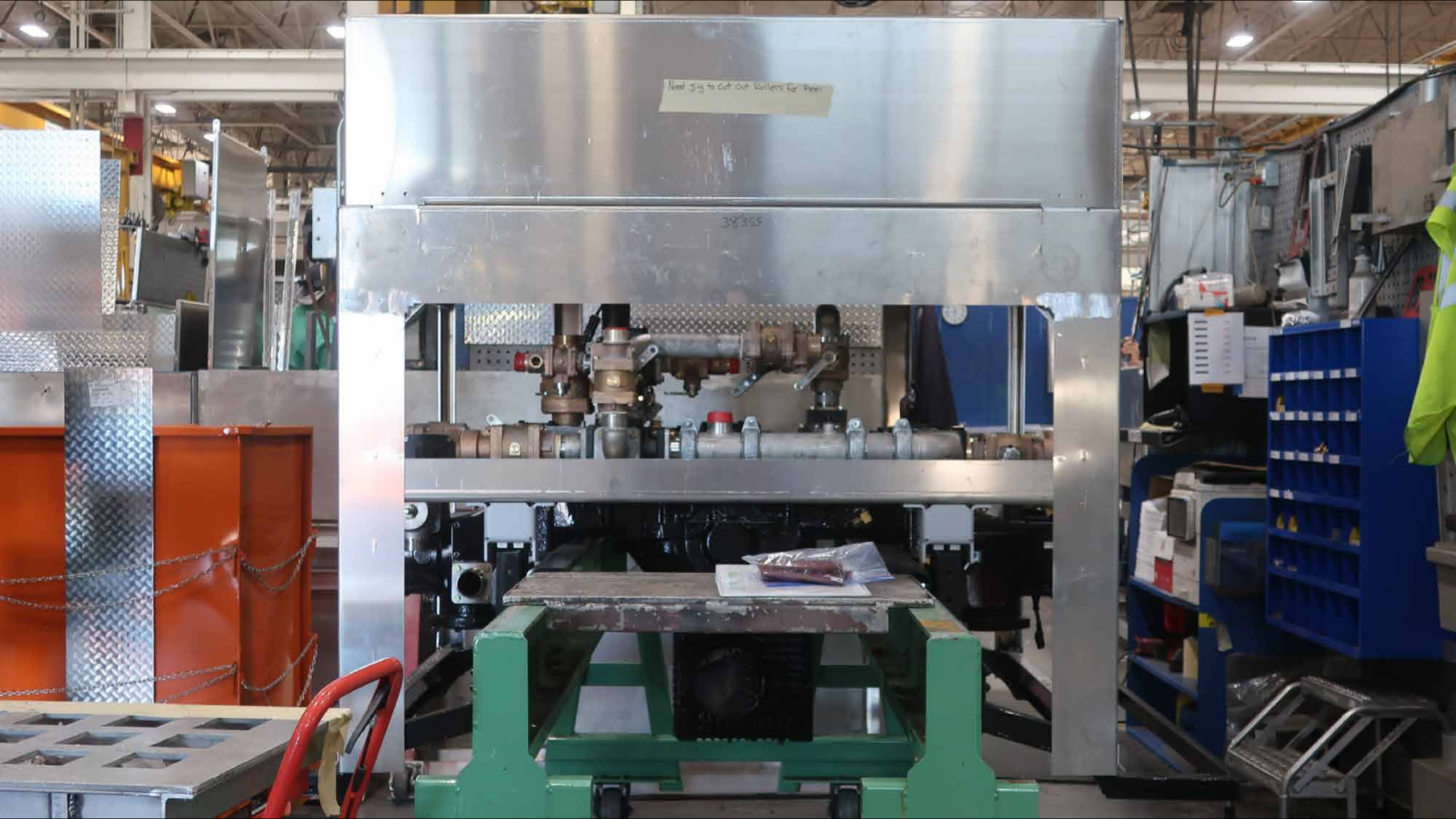


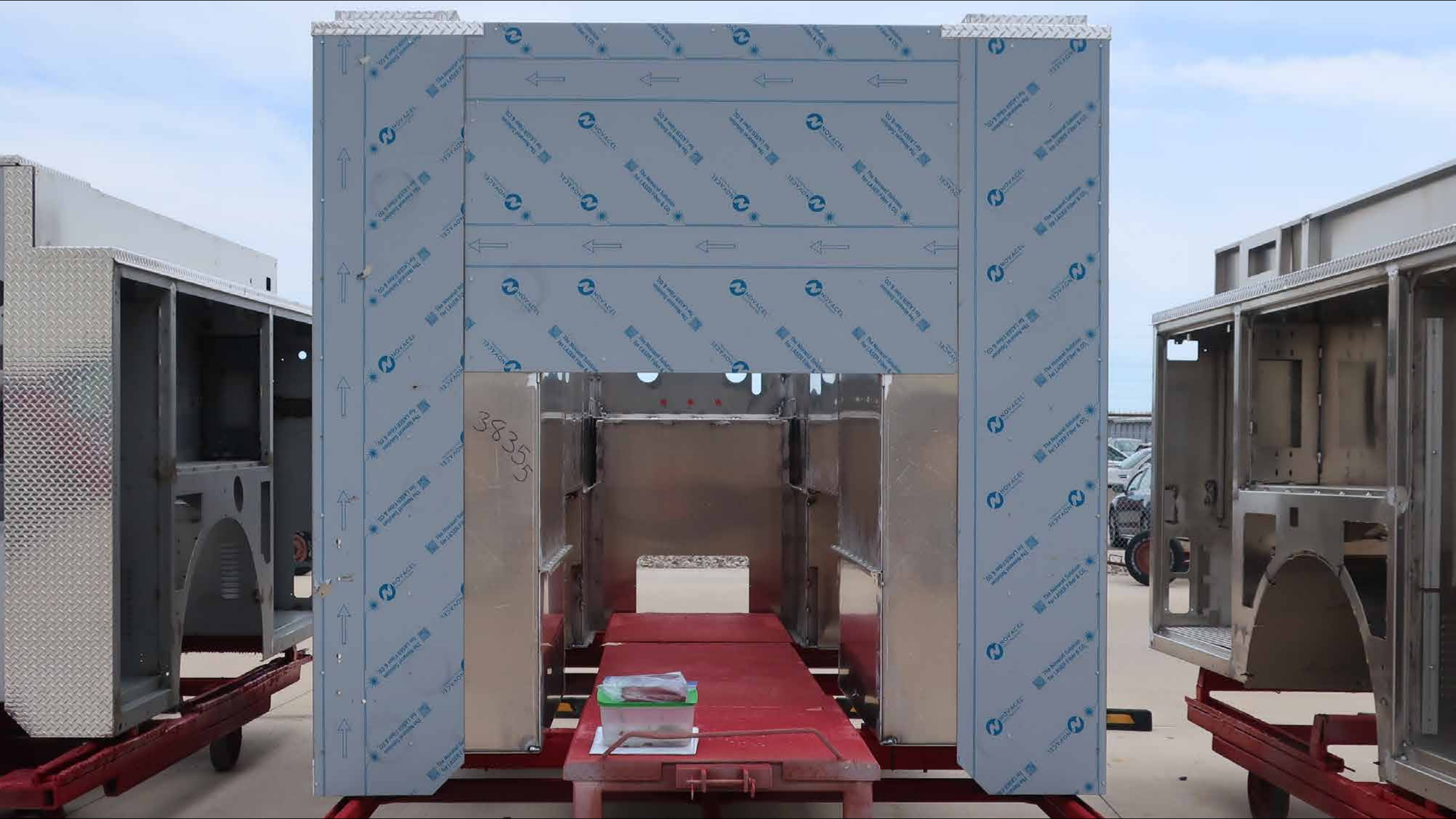
Roll Jig to cut out rollers for base

38754

Need 3/4" to cut out rollers for pipe

38355





38355

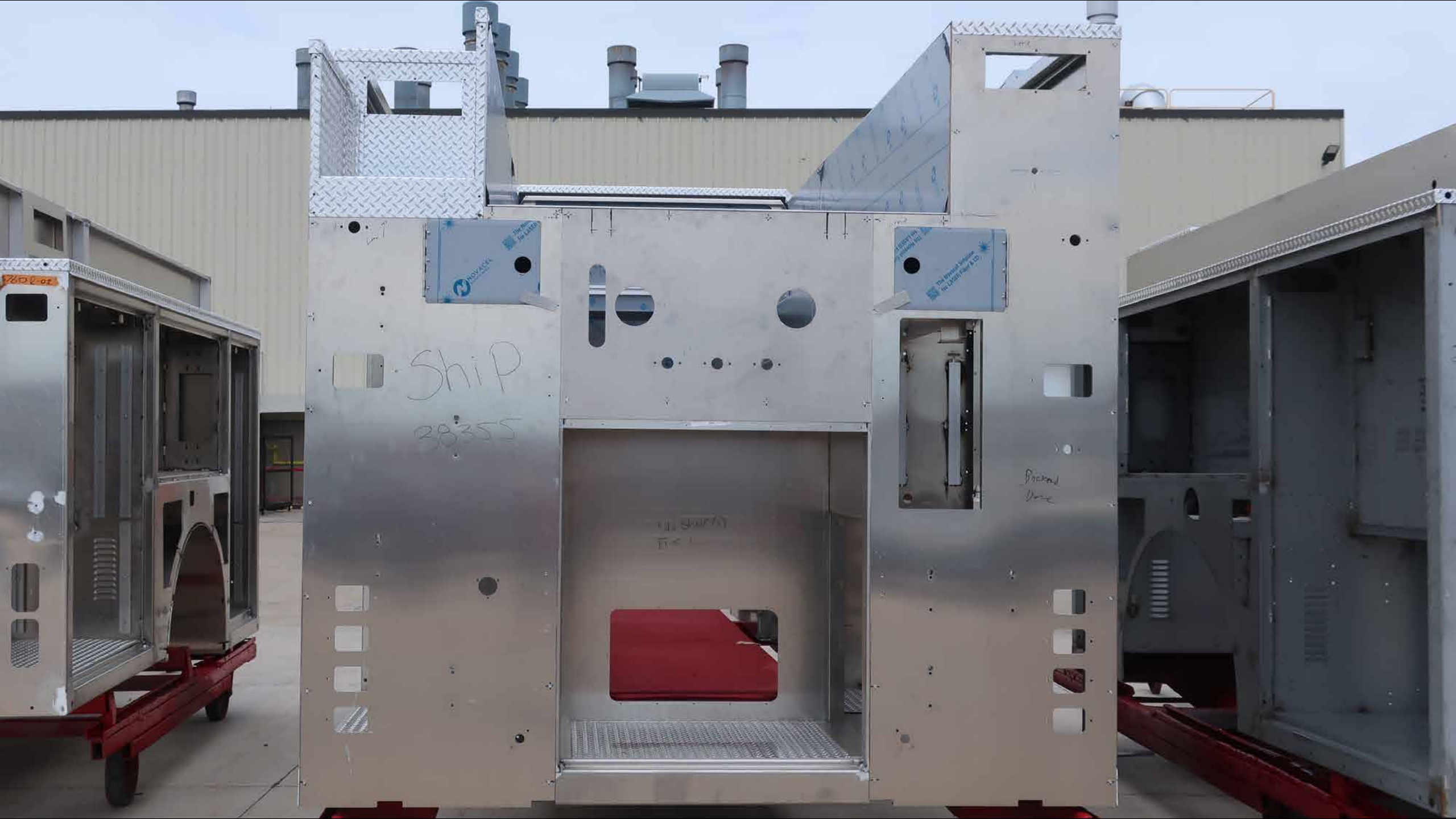




600-01

Ship

600-02



Ship
28355

NOVACEL
2018 Patent Pending

NOVACEL
2018 Patent Pending

Patent
Pending



SHIP

RECYCLED
A
The National Campaign
for a Green and Safe

Product
Line

11/15/11
The



38355



HUGHES FIRE EQUIPMENT