

Photo Album for Pierce Job 38355

The Daniel R. Sayre Memorial Foundation, HI

Custom Enforcer HDR Pumper

Wk 6 Production ending June 21, 2024

- The cab has been mounted to the chassis and the pumper continues assembly at the Neenah plant.
- The pump continues assembly at the IPP plant.
- The body has begun the paint process at the IPP plant.

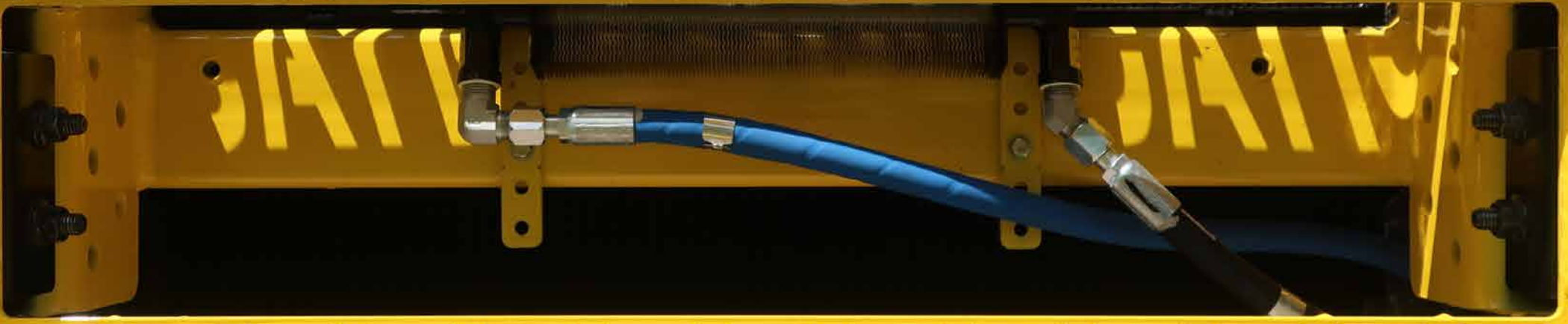
SAYRE FOUNDATION

FIBERCOL
175er 4 CO-Laser

FIBERCOL
175er 4 CO-Laser

FIBERCOL
175er 4 CO-Laser

tto







270117

38355





38355

229113



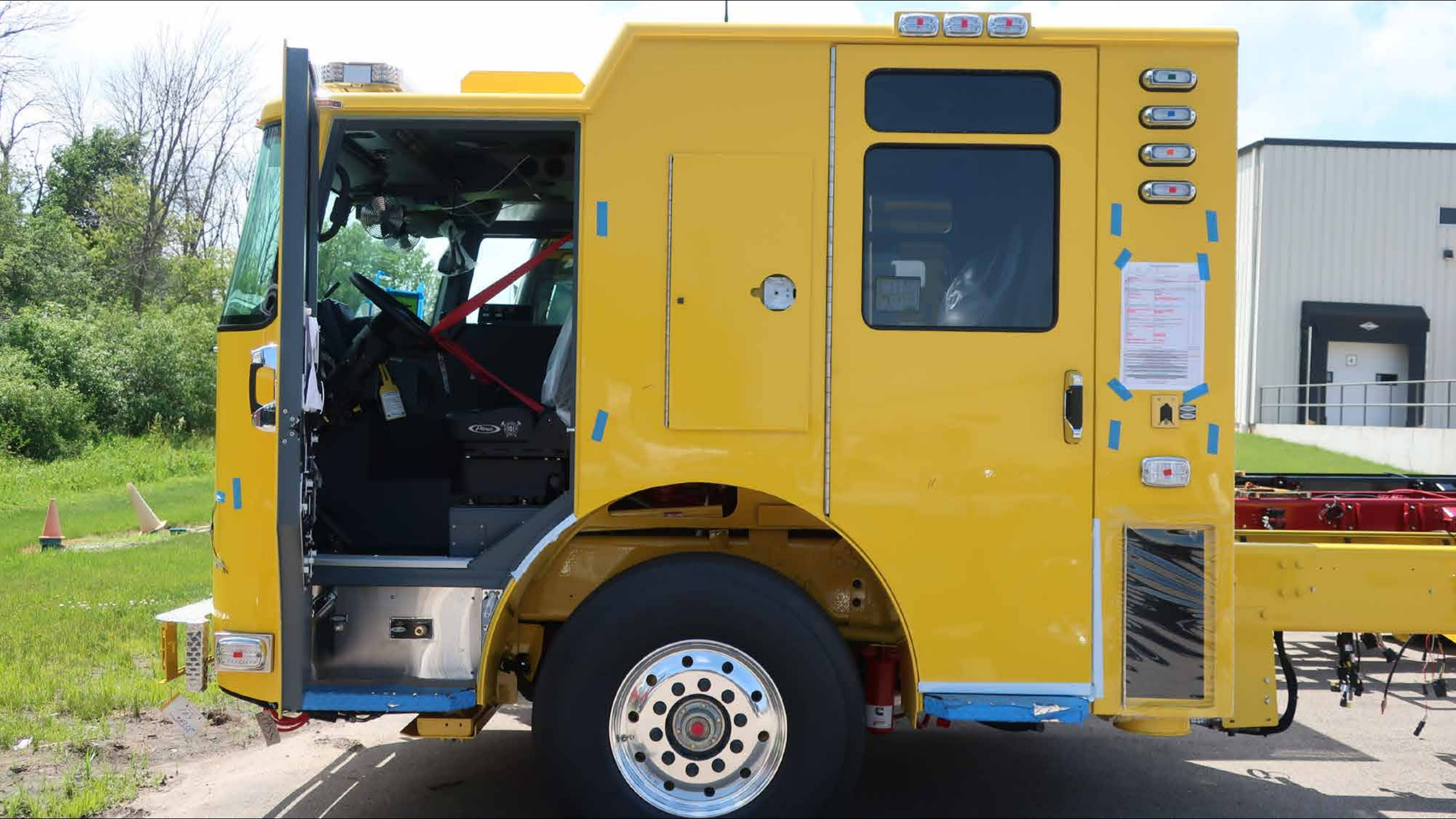
NOTICE

NOTICE
FRONTAL IMPACT OF
THE POLL COLLECTION

38355

SAYRE FOUNDATION

38355





Document taped to the side of the truck.

279131

ROB







114028
USDOT





MECH
SIREN



SIREN
BRAKE







Peterbilt

AUTO 88

ENG BRK LO/MED/HI
MIRROR HEAT
RETARDER ON OFF
PARK CLUTCH ENGAGED
OFF-ROAD TRACTION

PULL TO APPLY
PARKING BRAKE
PUSH TO RELEASE

CAUTION
DO NOT OPERATE
VEHICLE WITH
PARKING BRAKE
APPLIED

AMSON
TRANSMISSION
MODE
R
N
D



ENG BRK
ON/OFF

ENG BRK
LO/MED/HI

MIRROR
HEAT

RETARDER
ON
OFF

FAN CLUTCH
ENGAGED

OFF-ROAD
TRACTION

ALLISON



Pierce

AUTO

88



EMERGENCY
MASTER

ROOF
LIGHT

FRONT
WARNING

SIDE
WARNING

LOWER
REAR
WARNING

UPPER
REAR
WARNING

HIGH
BEAM
FLASH

OPTICOM

FRONT
FLOOD

DRIVER
SCENE

POD
SCENE

REAR
SCENE

LOW
PRIORITY

ELECTRIC
STOP

AIR
STOP



**EMERGENCY
MASTER**

**ROOF
LIGHT**

**FRONT
WARNING**

**SIDE
WARNING**

**LOWER
REAR
WARNING**

**UPPER
REAR
WARNING**

**HIGH
BEAM
FLASH**

OPTICOM

**FRONT
FLOOD**

**DRIVER
SCENE**

**PASS
SCENE**

**REAR
SCENE**



**LOAD
MANAGER**

**ELECTRNC
SIREN**

**AIR
HORN**



FEDERAL SIGNAL CORPORATION

PA300 SERIES

HORN



SIREN

MANUAL

RADIO

WAIL

YELP

HI-LO



GAIN



OFF







Cable Electrical Overview Sheet

Wire No.	Wire Color	Wire Size	Wire Type	Wire Description	Wire Location	Wire Notes
1	Red	16	THHN	Power to 12VDC Battery	Under Dash	
2	Blue	16	THHN	Ground to Chassis	Under Dash	
3	Yellow	16	THHN	Power to 12VDC Battery	Under Dash	
4	Green	16	THHN	Ground to Chassis	Under Dash	
5	Black	16	THHN	Power to 12VDC Battery	Under Dash	
6	White	16	THHN	Ground to Chassis	Under Dash	
7	Red	16	THHN	Power to 12VDC Battery	Under Dash	
8	Blue	16	THHN	Ground to Chassis	Under Dash	
9	Yellow	16	THHN	Power to 12VDC Battery	Under Dash	
10	Green	16	THHN	Ground to Chassis	Under Dash	
11	Black	16	THHN	Power to 12VDC Battery	Under Dash	
12	White	16	THHN	Ground to Chassis	Under Dash	
13	Red	16	THHN	Power to 12VDC Battery	Under Dash	
14	Blue	16	THHN	Ground to Chassis	Under Dash	
15	Yellow	16	THHN	Power to 12VDC Battery	Under Dash	
16	Green	16	THHN	Ground to Chassis	Under Dash	
17	Black	16	THHN	Power to 12VDC Battery	Under Dash	
18	White	16	THHN	Ground to Chassis	Under Dash	
19	Red	16	THHN	Power to 12VDC Battery	Under Dash	
20	Blue	16	THHN	Ground to Chassis	Under Dash	
21	Yellow	16	THHN	Power to 12VDC Battery	Under Dash	
22	Green	16	THHN	Ground to Chassis	Under Dash	
23	Black	16	THHN	Power to 12VDC Battery	Under Dash	
24	White	16	THHN	Ground to Chassis	Under Dash	
25	Red	16	THHN	Power to 12VDC Battery	Under Dash	
26	Blue	16	THHN	Ground to Chassis	Under Dash	
27	Yellow	16	THHN	Power to 12VDC Battery	Under Dash	
28	Green	16	THHN	Ground to Chassis	Under Dash	
29	Black	16	THHN	Power to 12VDC Battery	Under Dash	
30	White	16	THHN	Ground to Chassis	Under Dash	

Pierce
911
FIRE





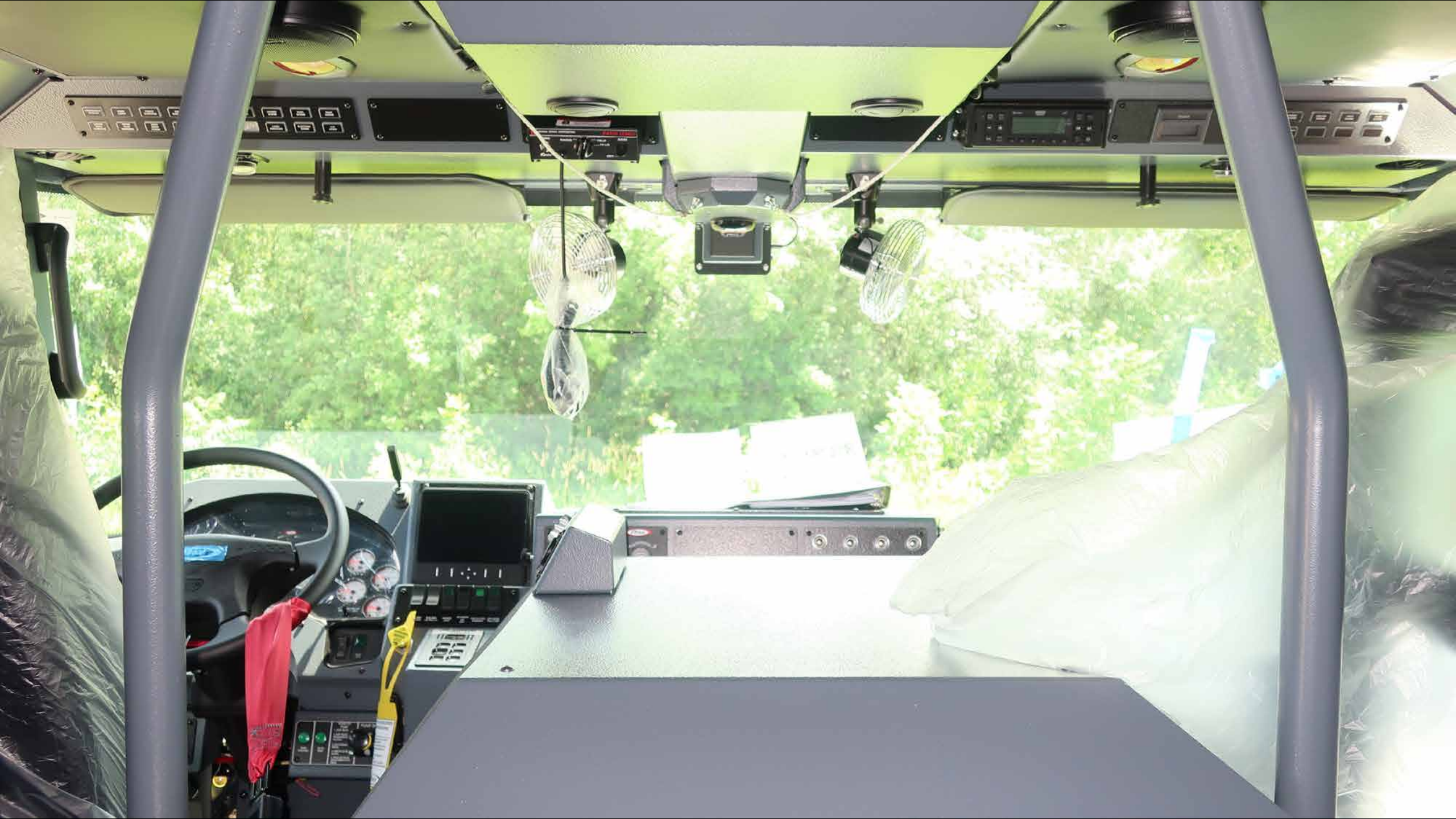
Vehicle		Make	Model
Year	2014		
Make	Pierce		
Model	Rescue 1		
Color	Yellow		
Engine	6.7L Cummins		
Transmission	6-Speed		
Drive	4WD		
Chassis	1500		
Options	...		
Notes	...		

Pierce
911
INC.





38355



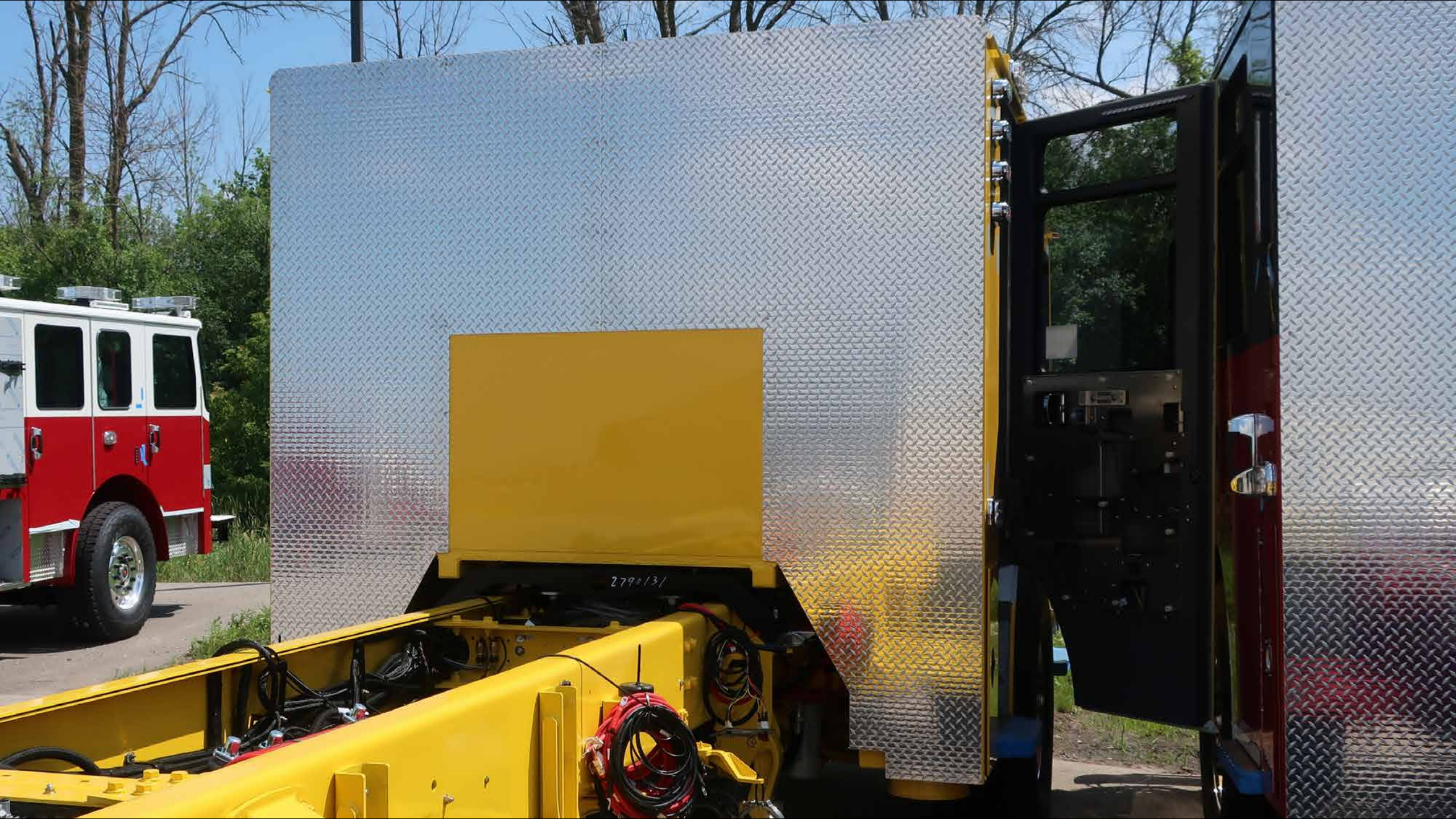






38855

279819



2790131



38355









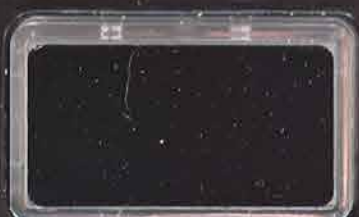
**FRONT
FLOOD**

**DRIVER
SCENE**

**PASS
SCENE**

**REAR
SCENE**

**EMERGENCY
MASTER**



CLOCK



Bluetooth

JENSEN
HEAVY DUTY

NOAA



MODE
PAIR



BAND
SCROLL

1

2

3

4

5

6

ENTER
INFO



PS
AS



JHD12



38355





DANGER
HIGH PRESSURE
CONTROL SYSTEM
DO NOT TOUCH
OPERATING UNIT







2008M
P.H



38355



38355

38443







38443

38355





HUGHES FIRE EQUIPMENT