

Photo Album for Pierce Job 38355

The Daniel R. Sayre Memorial Foundation, HI

Custom Enforcer HDR Pumper

Wk 7 Production ending June 28, 2024

- The pump has been mounted to the chassis and the pumper continues assembly at the 41 plant.
- The body has completed the paint process and has begun assembly at the 41 plant.



SAYRE FOUNDATION

FIBERGLASS

FIBERGLASS

FIBERGLASS

Ebs #00-Laser

Ebs #00-Laser

Ebs #00-Laser

fto





38355

SAYRE FOUNDATION











ITEM NO: 2022
DATE: 10/10/22
BY: [Signature]
CHECKED: [Signature]
APPROVED: [Signature]

WYBE FOUNDATION



38355



Document with technical specifications or instructions, partially obscured by a white paper.

Control panel with four buttons, likely for emergency lights or sirens.

Small bag containing electronic components or wiring.

DF-355

Pierce 911

Blue rectangular sticker on the yellow exterior panel.




114028
USDOT

MECHANICAL
SIREN

SIREN BRAKE

HOWLER
ACTIVATION

A close-up photograph of a control panel with a dark, textured surface. Three circular indicator lights are arranged horizontally. Below each light is a rectangular button with a silver oval label. The labels read 'MECHANICAL SIREN', 'SIREN BRAKE', and 'HOWLER ACTIVATION' from left to right. On the far right of the panel is a large, circular, black push-button with a textured surface and a small protrusion at the bottom. The panel is mounted on a dark, perforated metal surface. The background shows a blurred interior of a vehicle or boat.

MECHANICAL
SIREN

SIREN BRAKE

HOWLER
ACTIVATION

BLUE SEA SYSTEMS
12VDC



OFF
1
2
3
4
5
6
ON

ULTRA LOW SULFUR
DIESEL FUEL ONLY

ENG BRK
ON/OFF



ON 1 2 3 4 5 6 ON

4FRODITE
SRS

1.500 PSI MAX. PSI
SEE P.V. FLUID ONLY

TRUCK BRK
ENG BRK
LO/HI/MD/HT
MIRROR
HEAT
RETARDER
ON/OFF
FAN CLUTCH
ENGAGED
OFF-ROAD
TRACTION

WALKER
Transmission

R MODE
N
D

AUTO 88

Pierce

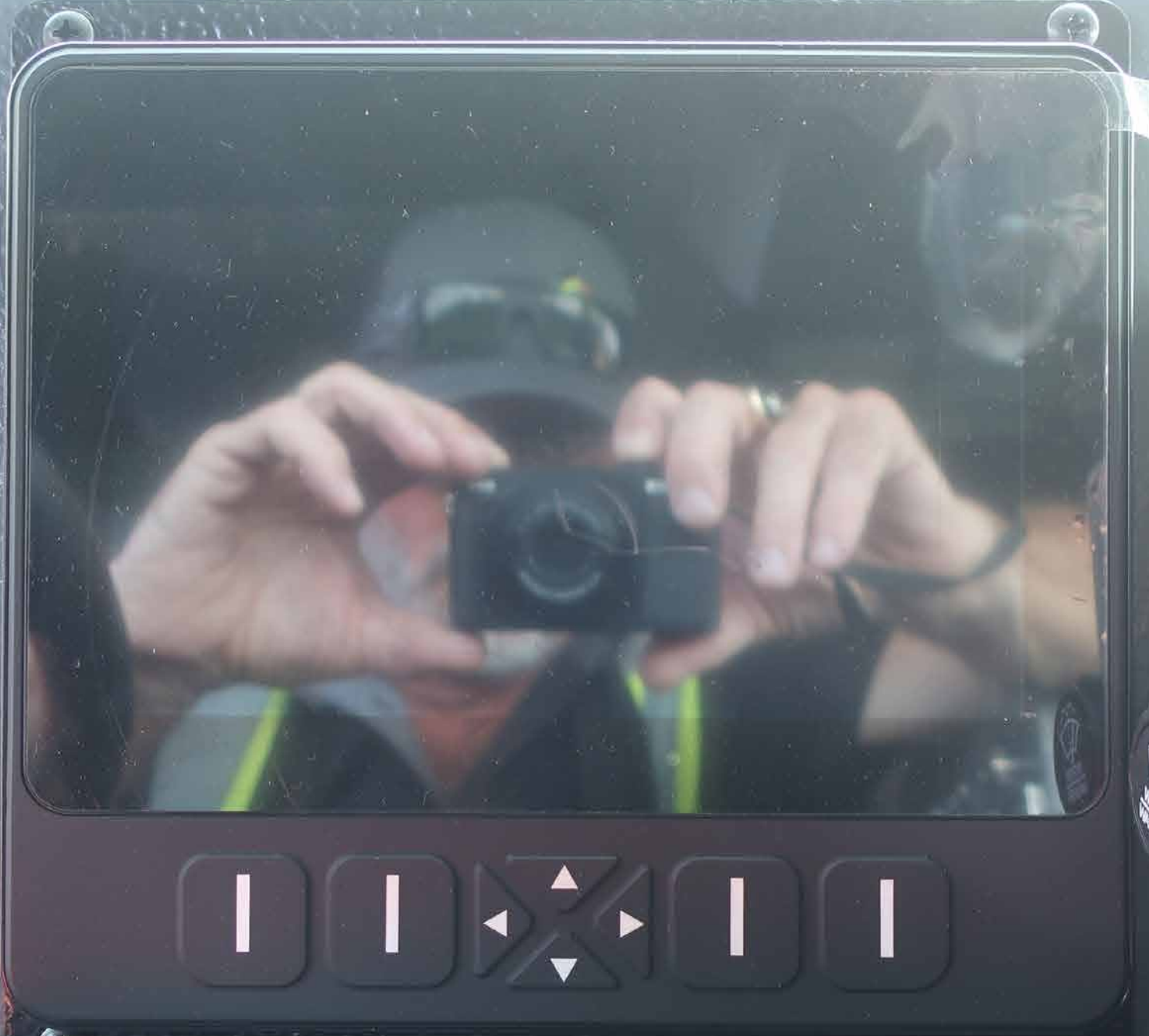
PULL TO APPLY
PARKING
BRAKE
PUSH TO
RELEASE

WATER REQUIRED
WHEN BACKING

BOARD TO
PUMP

1. STOP TRUCK
2. SHUT BRK
3. CHECK LTRK
4. ENGAGE TRK
5. ENGAGE TRK
6. ENGAGE TRK

OFF
1
2
3
4
5
6
ON



ENG BRK
ON/OFF

ENG BRK
LO/MED/HI

MIRROR
HEAT

RETARDER
ON
OFF

FAN CLUTCH
ENGAGED

OFF-ROAD
TRACTION



Allison
Transmission



Pierce

AUTO

88



EMERGENCY
MASTER

ROOF
LIGHT

FRONT
WARNING

SIDE
WARNING

LOWER
REAR
WARNING

UPPER
REAR
WARNING

HIGH
BEAM
FLASH

OPTICOM

FRONT
FLASH

ROOF
FLASH

LOW
FLASH

HIGH
FLASH

REAR
FLASH
LOW

LOW
WARNING

FLASHING
LIGHT

OFF
FLASH



**EMERGENCY
MASTER**

**ROOF
LIGHT**

**FRONT
WARNING**

**SIDE
WARNING**

**LOWER
REAR
WARNING**

**UPPER
REAR
WARNING**

**HIGH
BEAM
FLASH**

OPTICOM

**FRONT
FLOOD**

**DRIVER
SCENE**

**PASS
SCENE**

**REAR
SCENE**

**WIPER
FLUID
LOW**

**LOAD
MANAGER**

**ELECTRNC
SIREN**

**AIR
HORN**



FEDERAL SIGNAL CORPORATION

PA300 SERIES

HORN



SIREN

MANUAL

RADIO



WAIL

YELP

HI-LO

GAIN



OFF



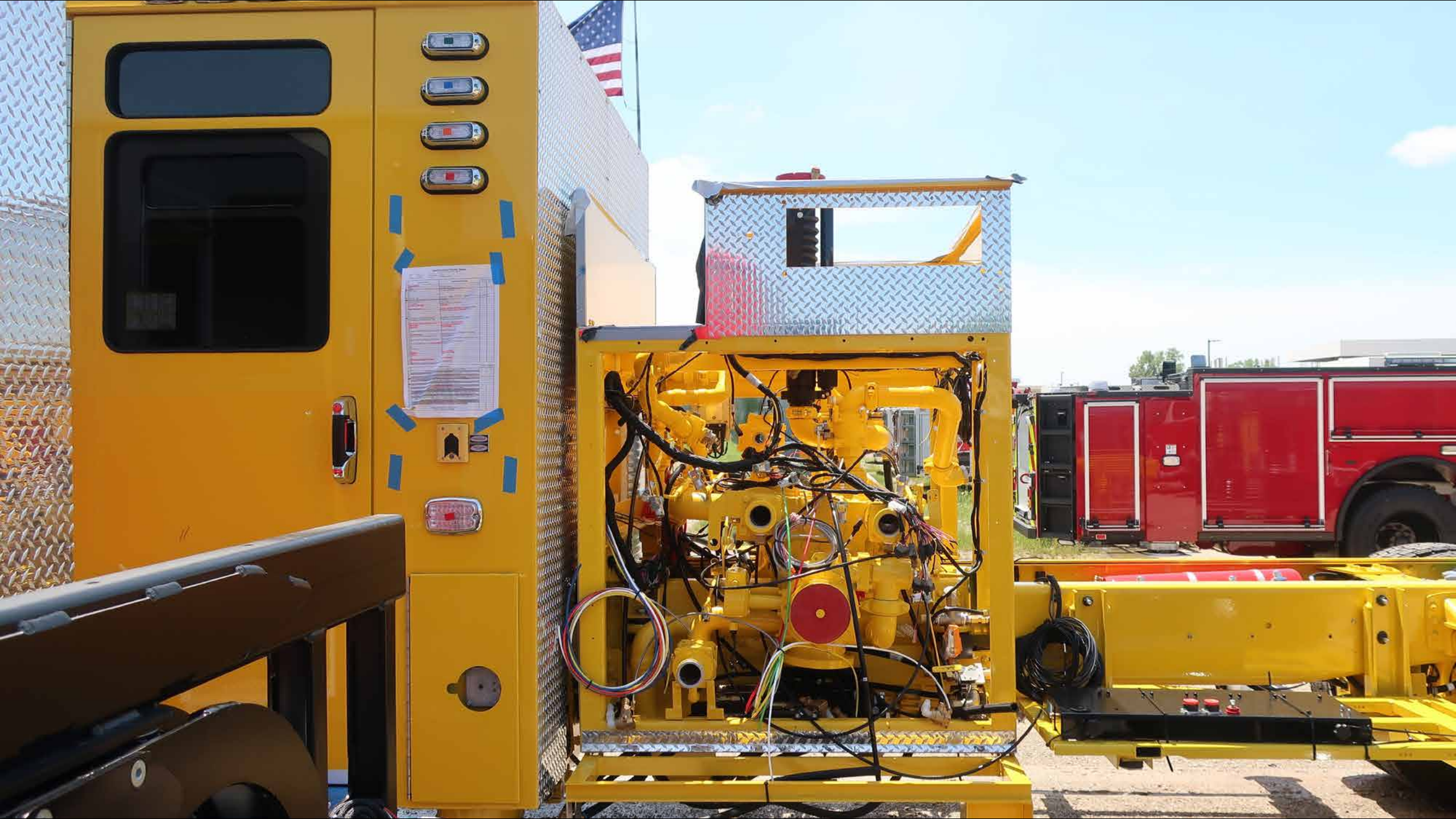
38355

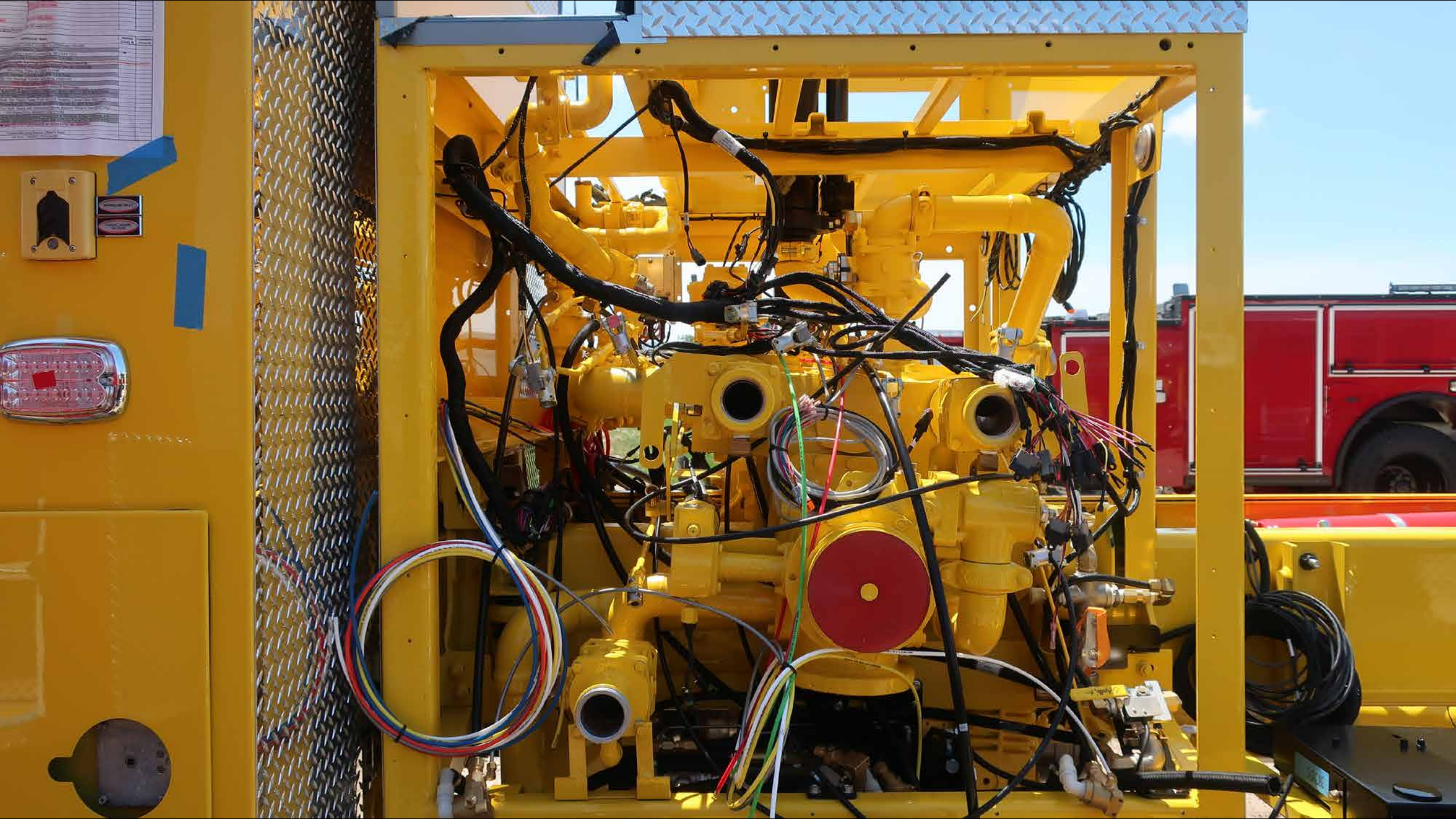


















38355









HYDRA-CONTROL MODULE









Pierce
911

BEARING ZONE TAK-4
1202835















P1910





HOWLER
ACTIVATE



ELECTRONIC
SIREN



MECH
SIREN



SIREN
BRAKE



**FRONT
FLOOD**

**DRIVER
SCENE**

**PASS
SCENE**

**REAR
SCENE**

**EMERGENCY
MASTER**



CLOCK



Bluetooth

JENSEN
HEAVY DUTY

NOAA



MODE
PAIR



BAND
SCROLL



ENTER
INFO



PS
AS



1

2

3

4

5

6

JHD12



38355

38760



38355













38355

Pierce



HUGHES FIRE EQUIPMENT