

Photo Album for Pierce Job 38355  
The Daniel R. Sayre Memorial Foundation, HI  
Custom Enforcer HDR Pumper

Wk 9 Production ending July 12, 2024

- The pumper continues assembly at the 41 plant.



B451A

3 TON

31565

SAYRE FOUNDATION



SAYRE FOUNDATION





S451

4 TON  
ACCO  
WRIGHT  
CRANE

SAYRE FOUNDATION



38355

SAYRE FOUNDATION









NOTICE

DO NOT FILL

THIS RESERVOIR IS INTENDED FOR DIESEL  
EXHAUST FLYWHEEL  
HYDRAULIC OIL ONLY. DO NOT ADD  
OTHER FLUIDS. SEE OPERATOR MANUAL FOR  
ADDITIONAL INFORMATION.

Power Steering

4X15

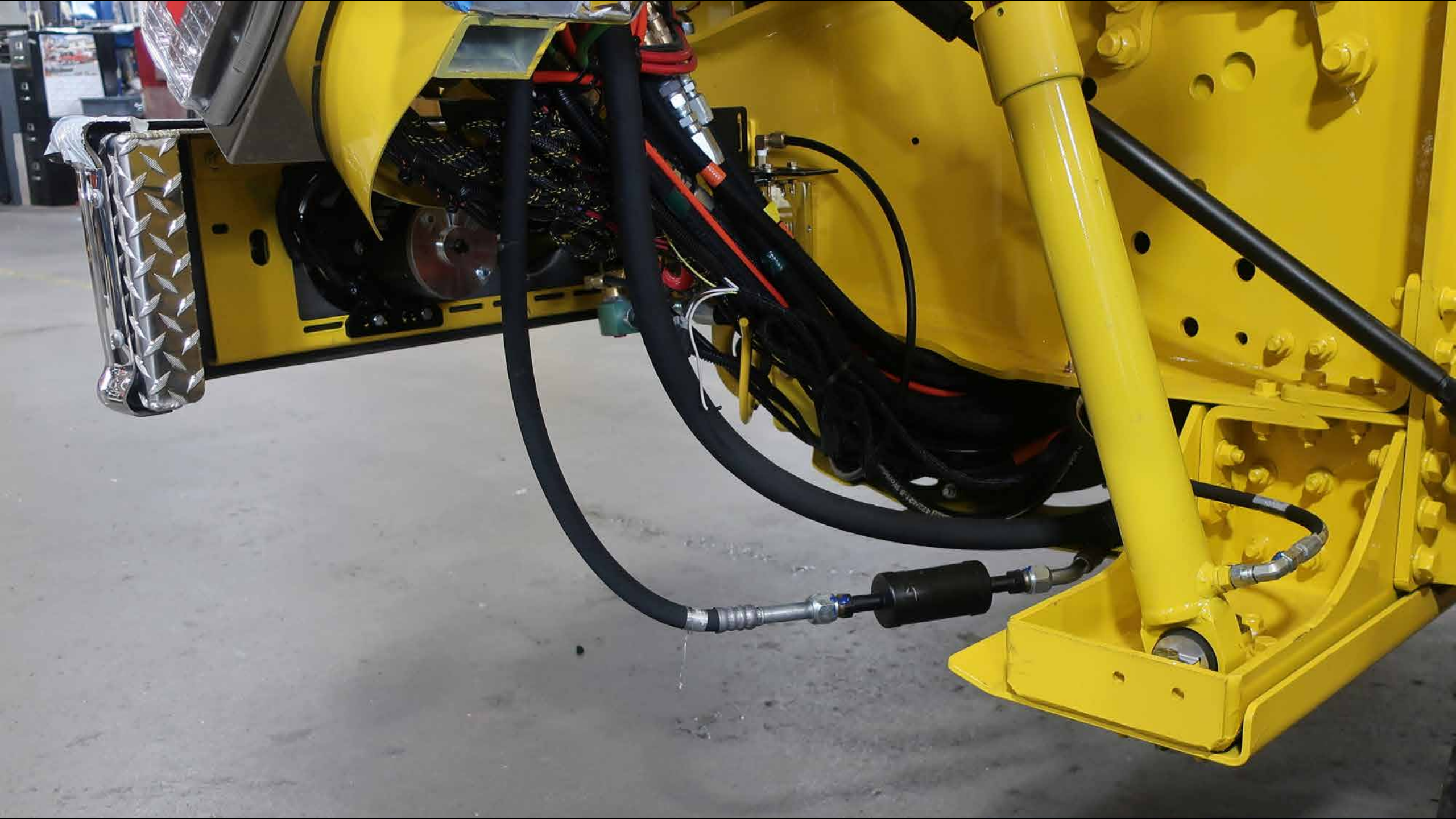


Cummins X15

**NOTICE**  
**DO NOT FILL**  
THIS RESERVOIR IS RESERVED FOR COOLANT RECOVERY ONLY.  
FILL COOLING SYSTEM AT RADIATOR ONLY.  
SEE OWNER'S MANUAL FOR ADDITIONAL DETAILS.

WARNING  
SAFETY

3844177R-100-1110





38355



**HUSKY**  
4000 PSI  
 8.88  
**Proco**

FOAM  
3/4"  
1/2"  
1/4"

WATER  
3/4"  
1/2"  
1/4"



PUMP  
 RPM  
 0 to 3000  
 Digital Display: 2100  
**Proco**

TRIPLE RE-CIRCULATION  
 0 to 100 PSI  
 Digital Display: 45



PEX  
 CLOSE, TRIP, OPEN, RESET  
**Proco**



NOVACEL  
 The Novacel Solution for LASER Fiber & ...  
 NOVACEL  
 NOVACEL  
 NOVACEL  
 NOVACEL



**PUMPBOSS**

CHECK ENGINE STOP ENGINE

RPM

STOP!  
THE PRESSURE SENSOR CALIBRATION  
MAY NEED TO BE PERFORMED  
DURING INITIAL INSTALLATION AS  
REFERENCED IN THE OPERATING  
MANUAL

MEASURE PRESENCE

THROTTLE READY

PRESSURE RPM PRESET

**IDLE**

Cummins

PANEL LIGHTS

FRONT FLOODLIGHT

DRIVER SIDE SCENE LIGHTS

PASSENGER SIDE SCENE LIGHTS

REAR SCENE LIGHTS

AIR HORN

OK TO PUMP

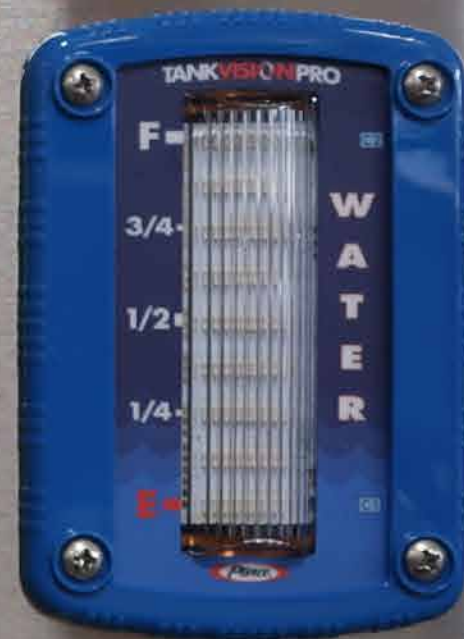
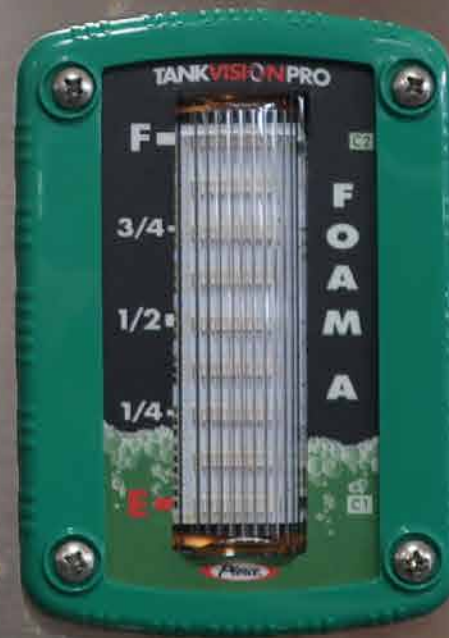
2647210

OPEN

ENGINE COOLER









NO. 1 CROSS-LAY WATER-FOAM  
NO. 2 CROSS-LAY WATER-FOAM  
NO. 2 PASSENGER SIDE DISCHARGE WATER-FOAM  
DRIVER SIDE REEL DISCHARGE WATER-FOAM  
PASSENGER SIDE REEL DISCHARGE WATER-FOAM

PASSENGER REAR DISCHARGE  
NO. 4 PASSENGER SIDE DISCHARGE

TANK FILL & RE-CIRCULATING LINE

LANDS END PASS WATER EXCHANGE  
NO. 1 DRIVER SIDE DISCHARGE

NO. 2 DRIVER SIDE DISCHARGE

STOP  
START  
STATUS  
MIV  
MIV  
ELKHART BRASS

NO. 3 DRIVER SIDE DISCHARGE

NO. 3 DRIVER SIDE DISCHARGE

PUMP OPERATOR  
PRIMER FIRE PUMP  
MIV MANUAL OVER-RIDE  
PUSH TO PRIME  
GREEN CLOSE

Large circular yellow and black grille



TANK TO PUMP



PRES

REAR SCENE LIGHTS



AIR HORN

OK TO PUMP



PASSENGER REAR DISCHARGE

NO. 4 PASSENGER SIDE DISCHARGE

TANK FILL & RE-CIRCULATING LINE

OPEN

DRIVER MAIN INLET



HALE MIV AIR BLEED

VAC PRES



PASSENGER SIDE  
REEL DISCHARGE  
WATER-FOAM

ELKHART BRASS

APEX

CLOSE PRESET OPEN MENU



PASSENGER REAR  
DISCHARGE

DRIVER  
MAIN INLET



NO. 1 CROSSLAY  
WATER-FOAM

NO. 2 CROSSLAY  
WATER-FOAM

NO. 2 PASSENGER  
SIDE DISCHARGE  
WATER - FOAM

DRIVER SIDE REEL  
DISCHARGE WATER-FOAM

PASSENGER SIDE  
REEL DISCHARGE  
WATER-FOAM

LARGE DIA. PASS.  
SIDE DISCHARGE

EXTENDER  
UP  
DOWN  
Ekhart Brass

NO. 1 DRIVER  
SIDE DISCHARGE

STOW  
STATUS  
STREAM

STOW DEPLOY

STATUS

STREAM FOG

EXT AUX OSC

PRESET

ELKHART BRASS

DRIVER MAIN INLET

HALE

**MIV**

AIR BLEED

WARNING: BLEED AIR BEFORE OPENING MIV

PASSENGER MAIN INLET

HALE

**MIV**

AIR BLEED

WARNING: BLEED AIR BEFORE OPENING MIV

NO. 3 DRIVER SIDE DISCHARGE



NO. 3 DRIVER SIDE DISCHARGE



LARGE DIA. PASS.  
SIDE DISCHARGE

**EXTENDER**

UP

DOWN

Elkhart  
Brass



NO. 1 DRIVER  
SIDE DISCHARGE



PUMP DRAIN



PRIMER  
FIRE PUMP

HALE® **MIV** MANUAL  
OVERRIDE

CAUTION  
VALVE OPERATES  
AUTOMATICALLY

OPEN CLOSE



FIRE PUMP  
PUSH TO PUMP

TANK TO PUMP

Dis. Reel Discon.

SWITCH DISC. REEL DISCHARGE

PULL TO OPEN

PULL TO OPEN

PULL TO OPEN

PULL TO OPEN

SWIFT  
↑  
FLASH  
↓  
LAMP

PULL TO OPEN

DRAFT  
↑  
FOAM  
↓  
TANK

PULL TO OPEN  
NO. 1 DRIVER  
SIDE DISCHARGE

PULL TO OPEN  
NO. 3 DRIVER  
SIDE DISCHARGE







DRIVER SIDE  
AUX. INLET

DRIVER SIDE  
REEL DISCHARGE

Pls Reel  
Disch.

DRIVER SIDE  
REEL DISCHARGE

PULL TO OPEN  
NO. 1 CROSSLAY

PULL TO OPEN  
MANIFOLD DRAIN

PULL TO OPEN  
DRIVER SIDE  
AUX. INLET





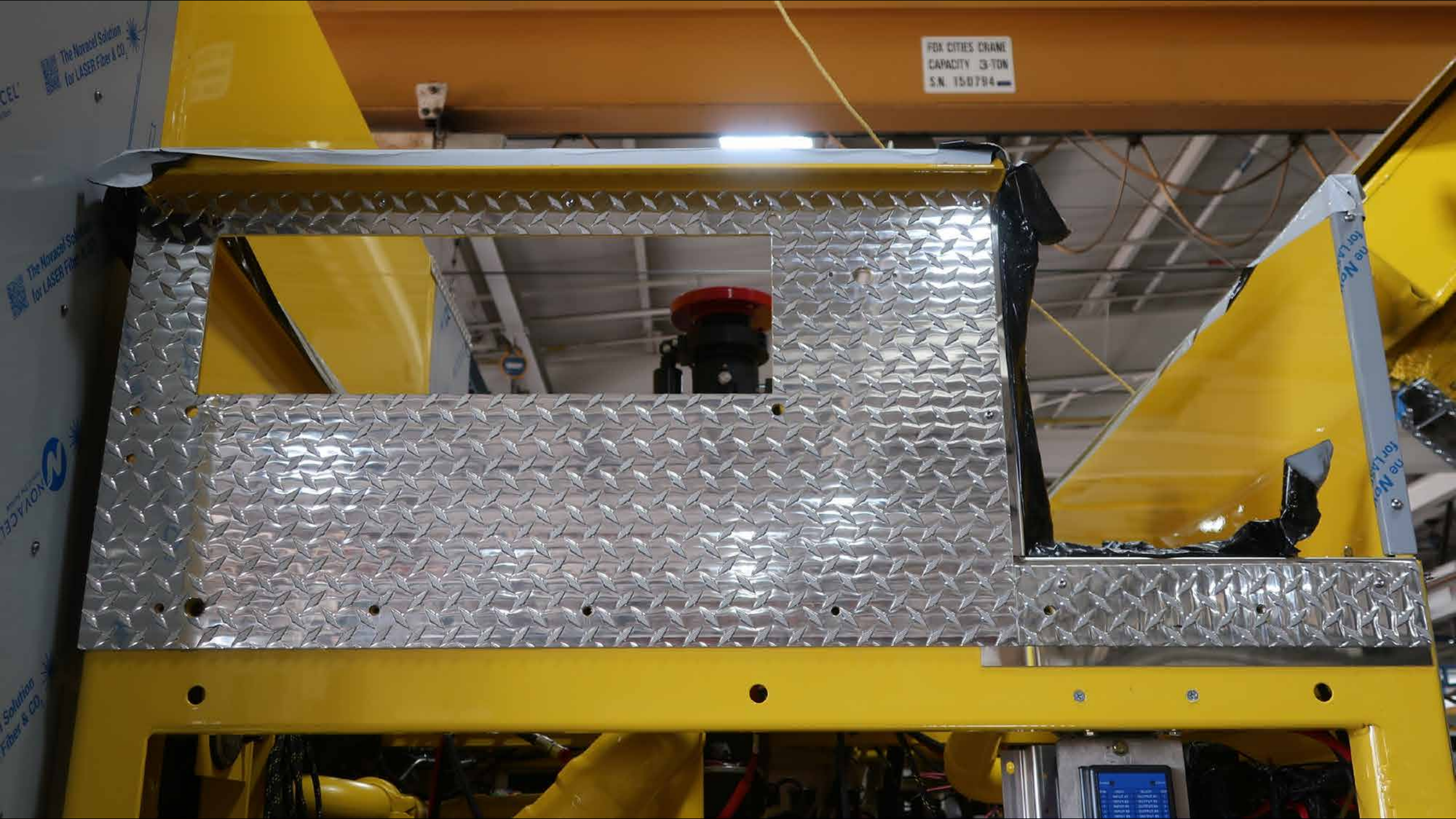




3655

RAY & PLUMBERS

FOA CITIES CRANE  
CAPACITY 13-TON  
S.N. 150794



CEL  
The Novacel Solution  
for LASER Fiber & Co.

CEL  
The Novacel Solution  
for LASER Fiber & Co.

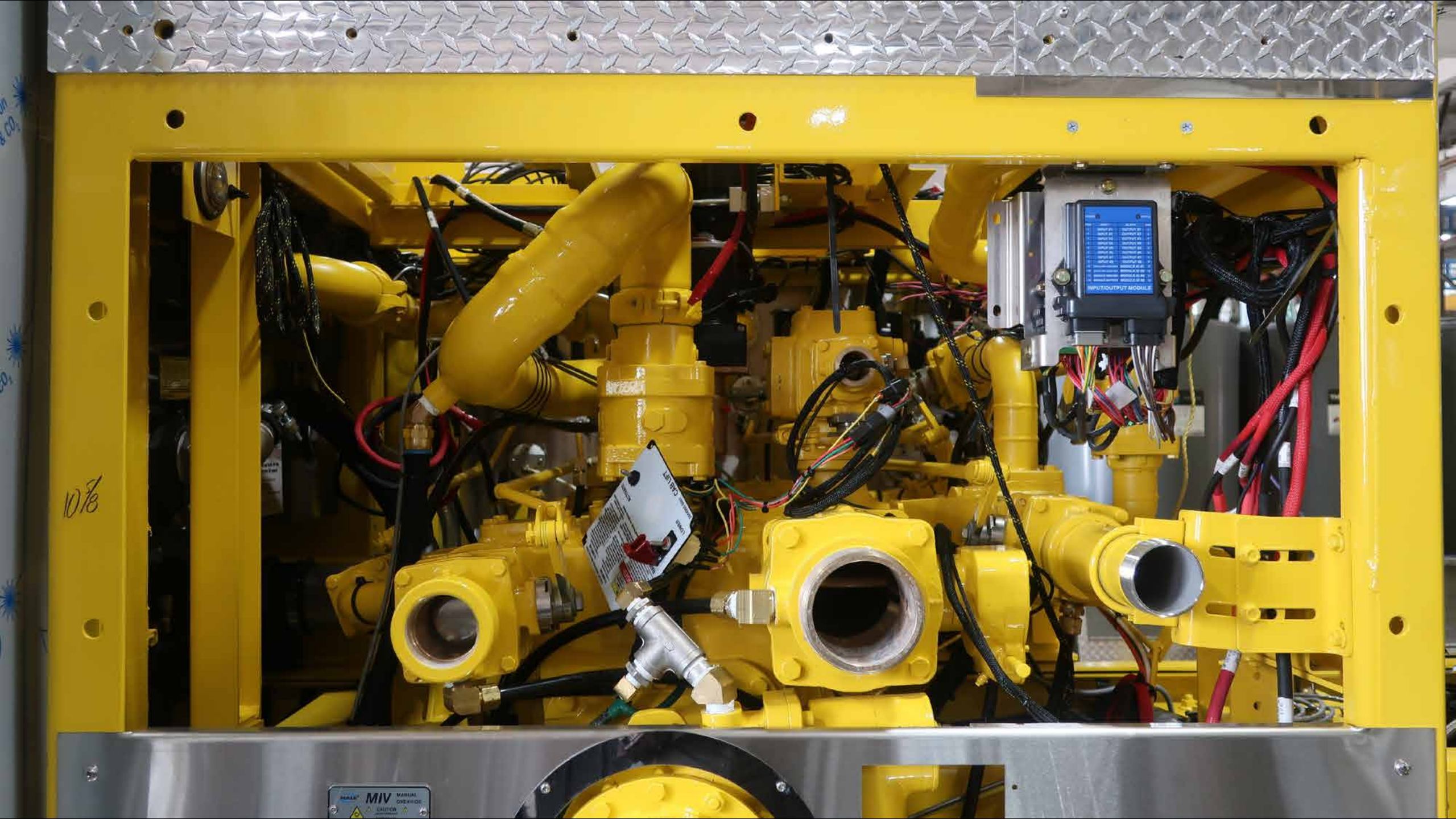
NOVACEL  
The Novacel Solution  
for LASER Fiber & Co.

CEL  
The Novacel Solution  
for LASER Fiber & Co.

The Novacel Solution  
for LASER Fiber & Co.

The Novacel Solution  
for LASER Fiber & Co.

Control panel display showing various status indicators and data.



10/8

LEFT  
RIGHT

INPUT/OUTPUT MODULE

MIV MARLIN  
CALIFORNIA





PASSENGER MAIN INLET  
AIR BLEEDER



PULL TO OPEN  
PASSENGER REAR  
DISCHARGE

PULL TO OPEN  
LARGE DIA. PASS.  
SIDE DISCHARGE

PULL TO OPEN  
NO. 2 CROSSLAY

PULL TO OPEN  
NO. 2 PASSENGER  
SIDE DISCHARGE

PULL TO OPEN  
NO. 4 PASSENGER  
SIDE DISCHARGE

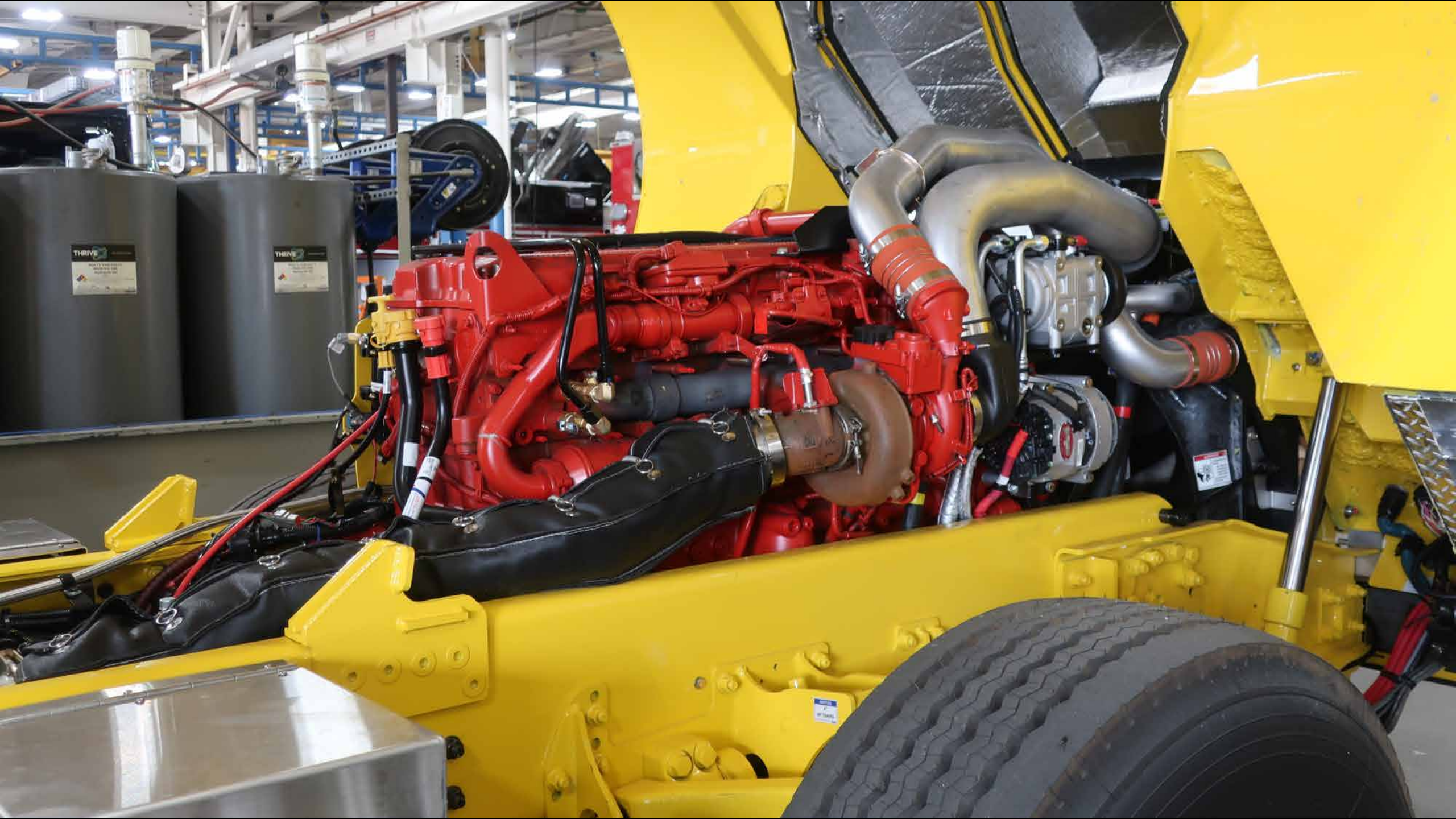
PULL TO OPEN  
PASSENGER SIDE  
AUX. INLET

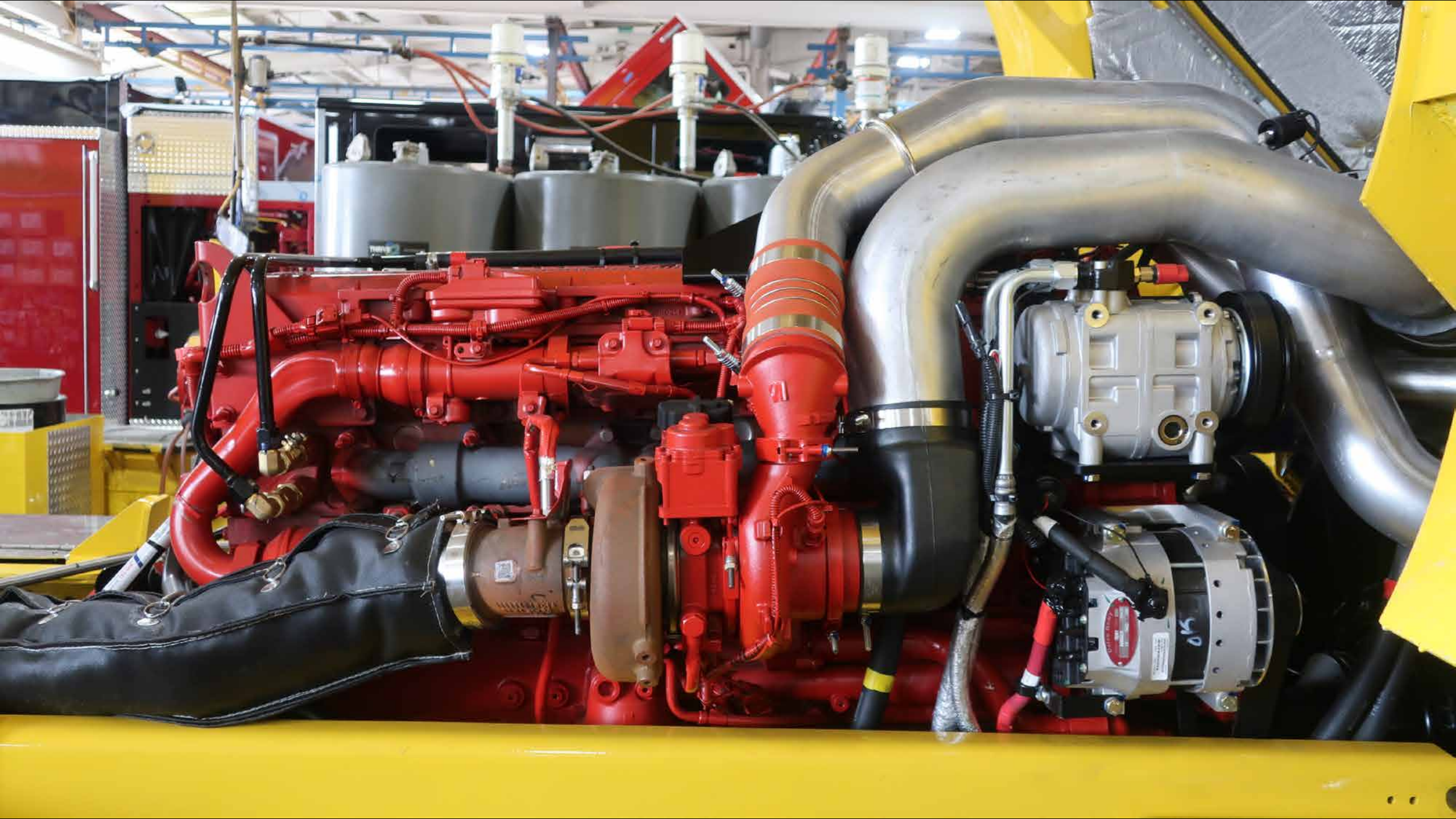
PASSENGER SIDE  
AUX. INLET

0.1000  
0.0000  
0.0000  
0.0000













**HUGHES FIRE EQUIPMENT**