

Photo Album for Pierce Job 38871-01 Sedona Fire District, AZ Custom Enforcer PUC Pumper

Wk 5 Production ending July 5, 2024

- The cab and pump have been mounted to the chassis and the pumper continues assembly at the Neenah plant.
- The body has completed weld operations and is staged to begin the paint process at the 41 plant.



B1110

STATION
OP CODE 36

CAUTION

STATION

E2

ULINE

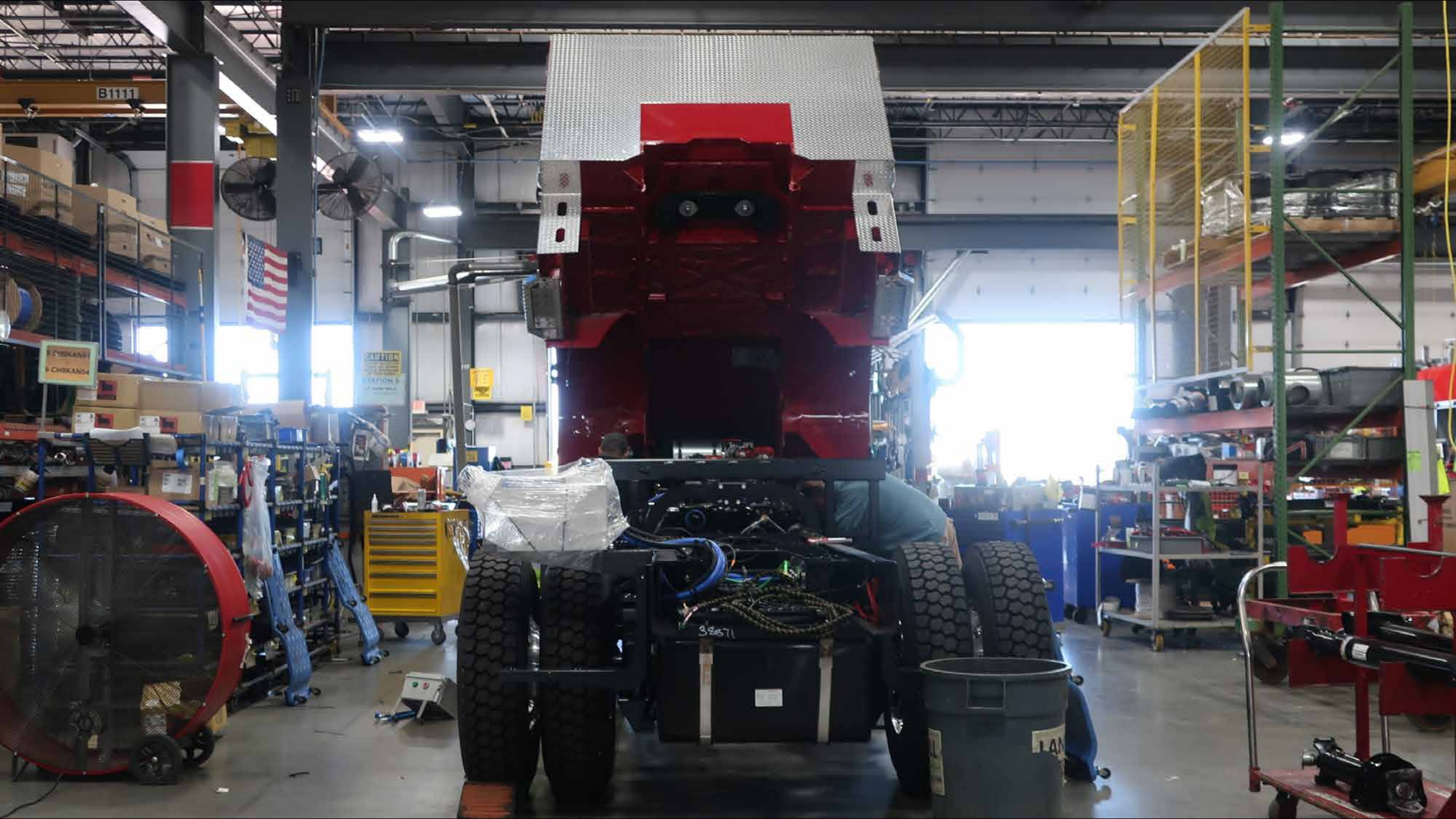
LANDFILL
LESS





THE GOOD FRAME
MOTOR OIL

DRILL



B1111

CHICAGO
CHICAGO

CAUTION
EXHAUSTION
OF FUMES

32671

LAN



STATION 2
SP CONE 3413

FISHER

38871

38871

LANDELL
S





BERVE

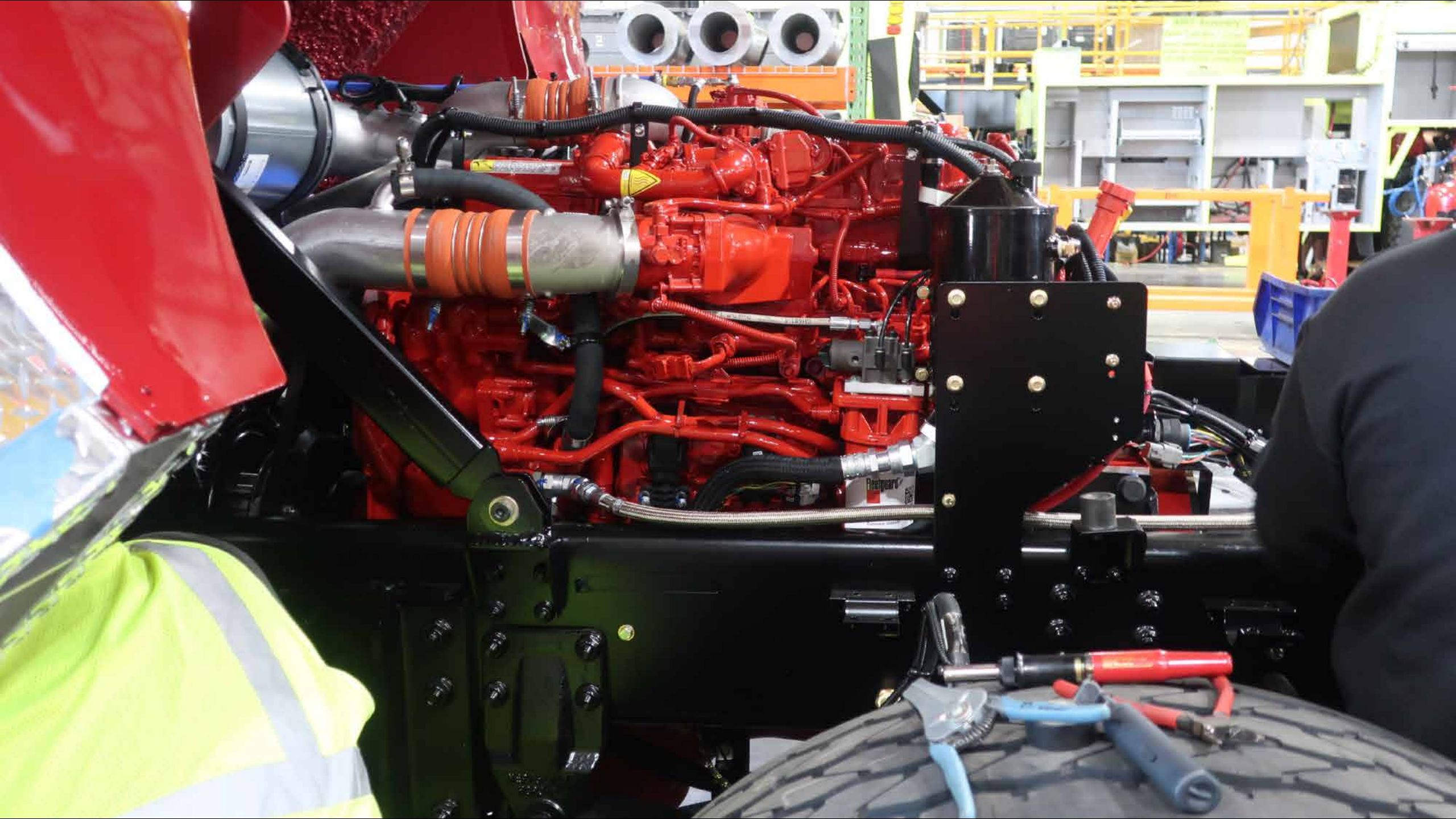
1-11-2020

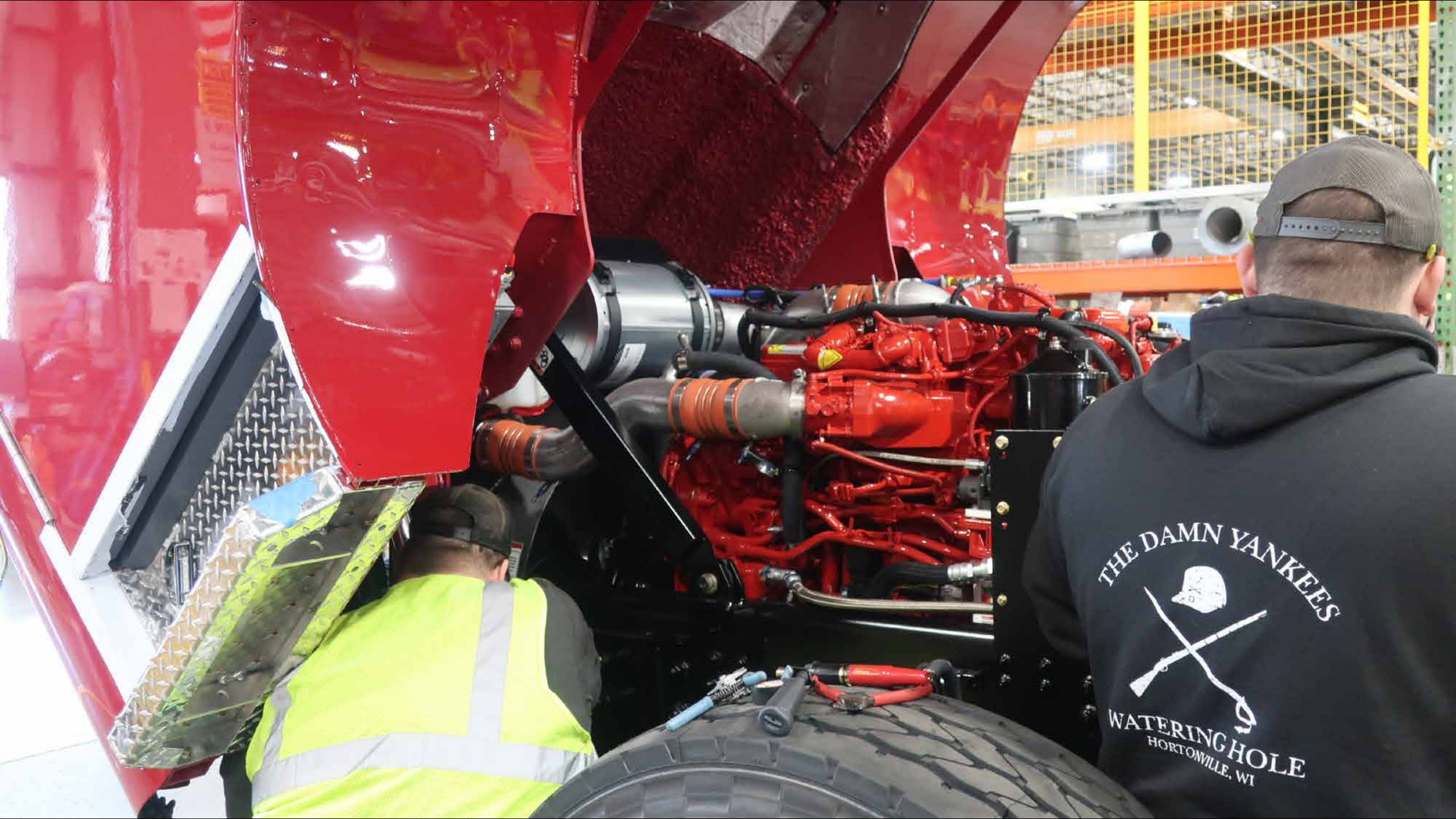
1-11-2020

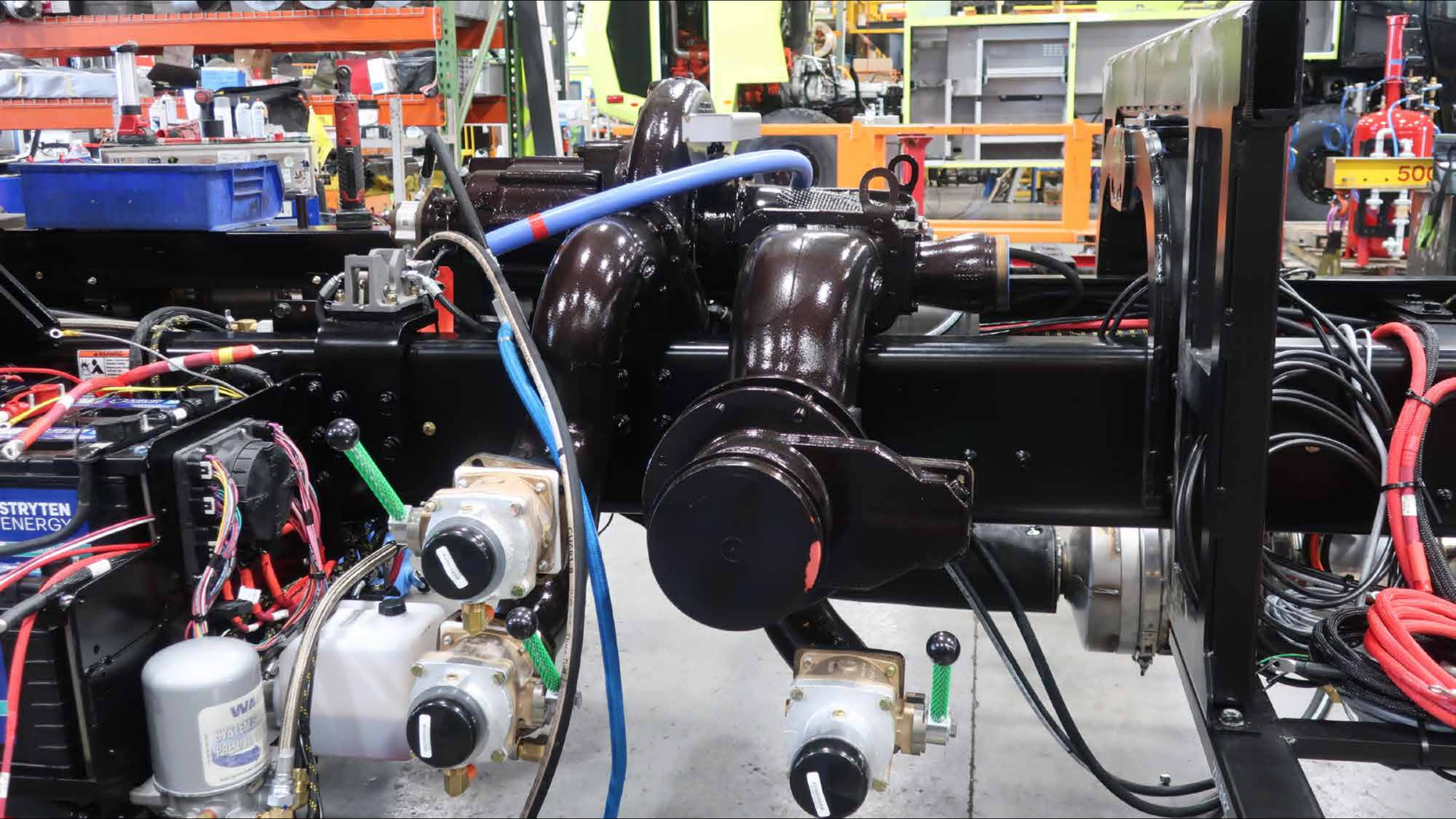
E2

VOLVO

1-11-2020





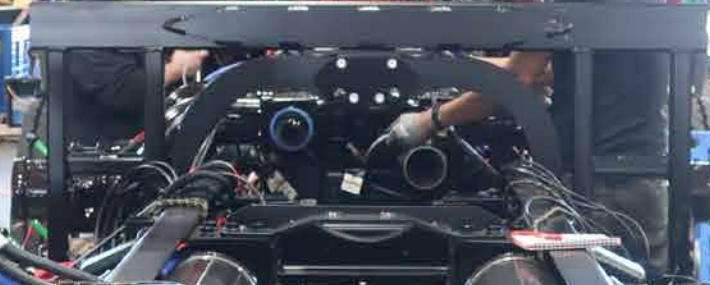


STRYTEN
ENERGY

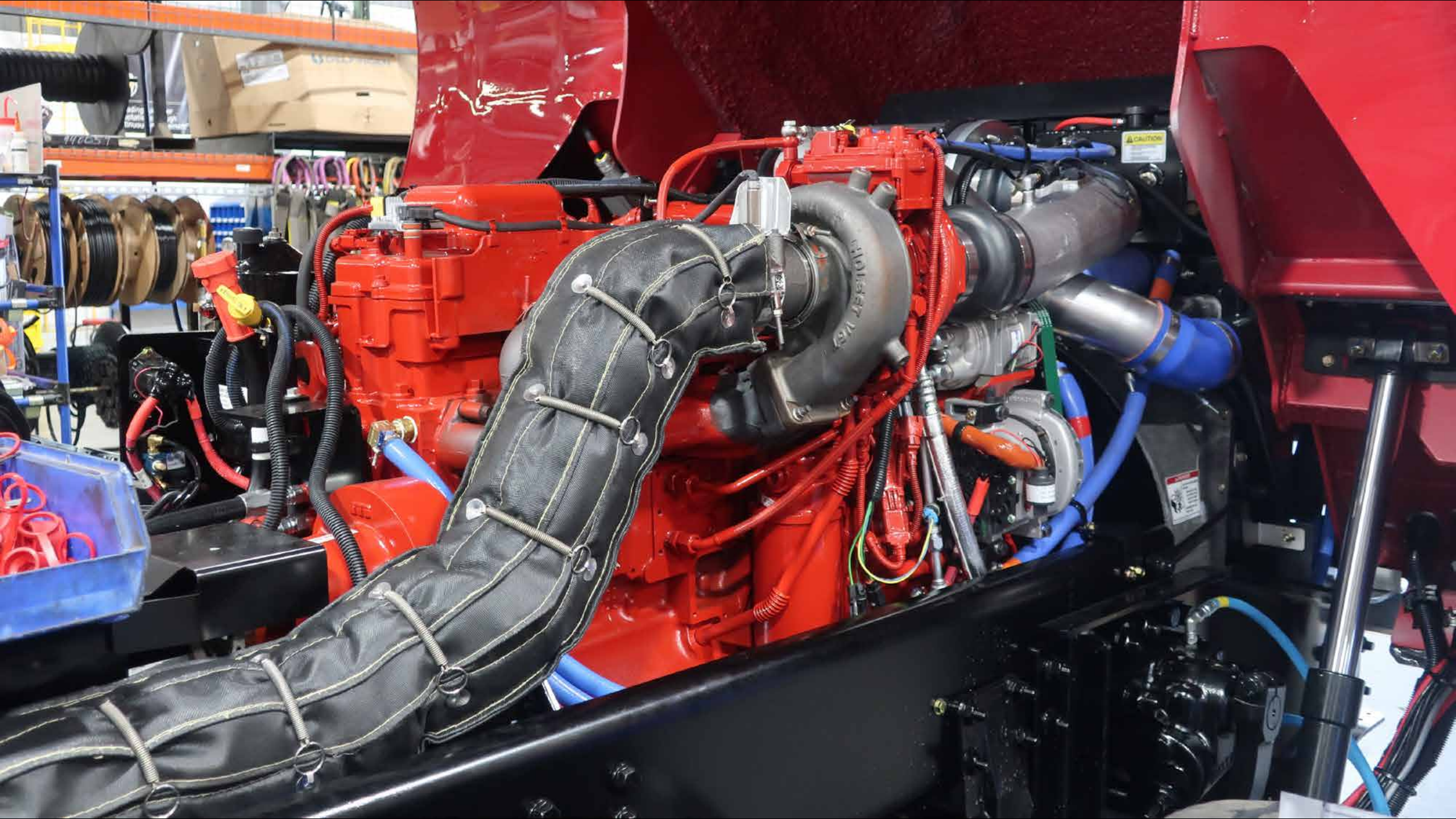
500

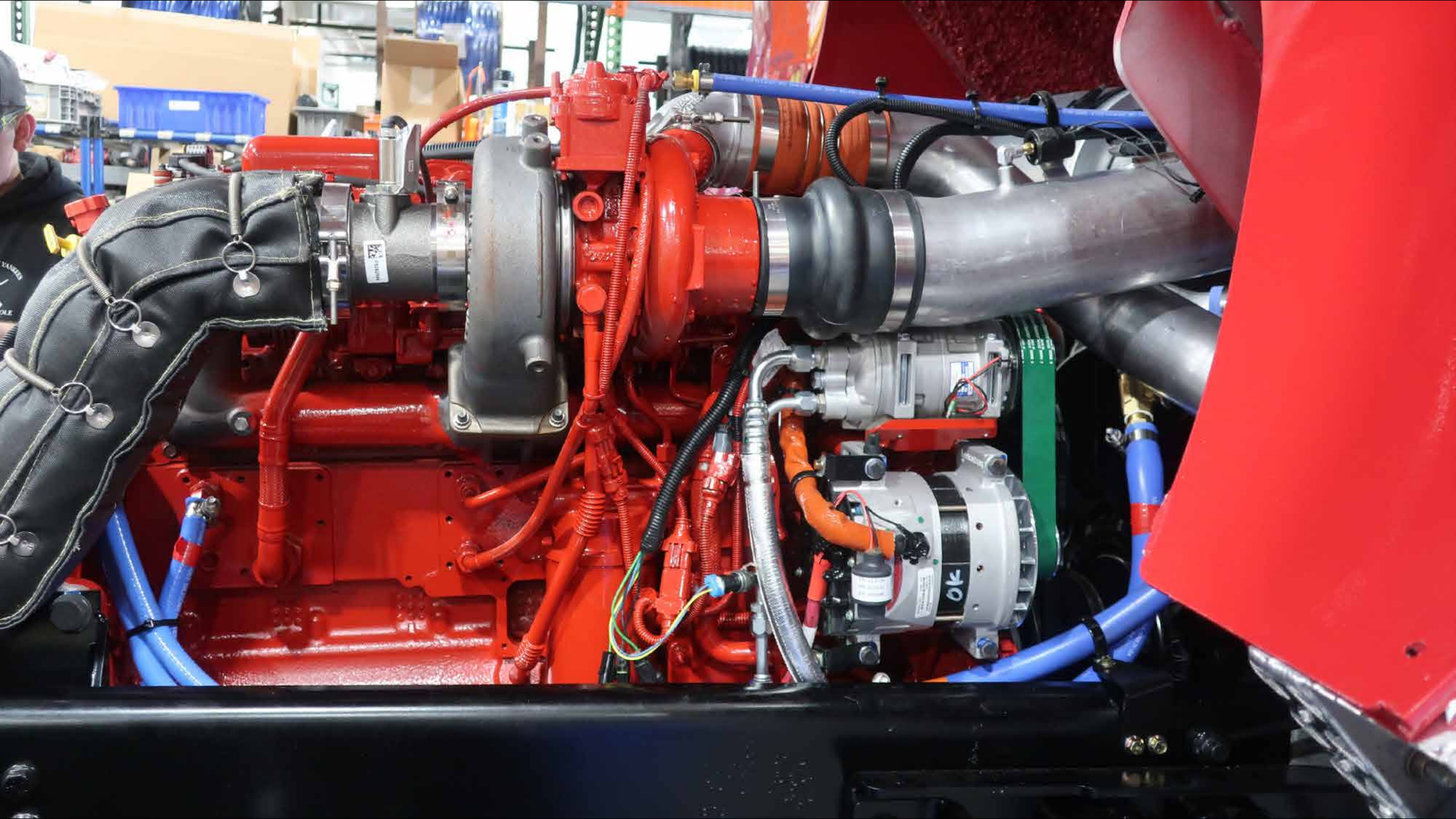
WA
SYSTEMS
PREMIUM

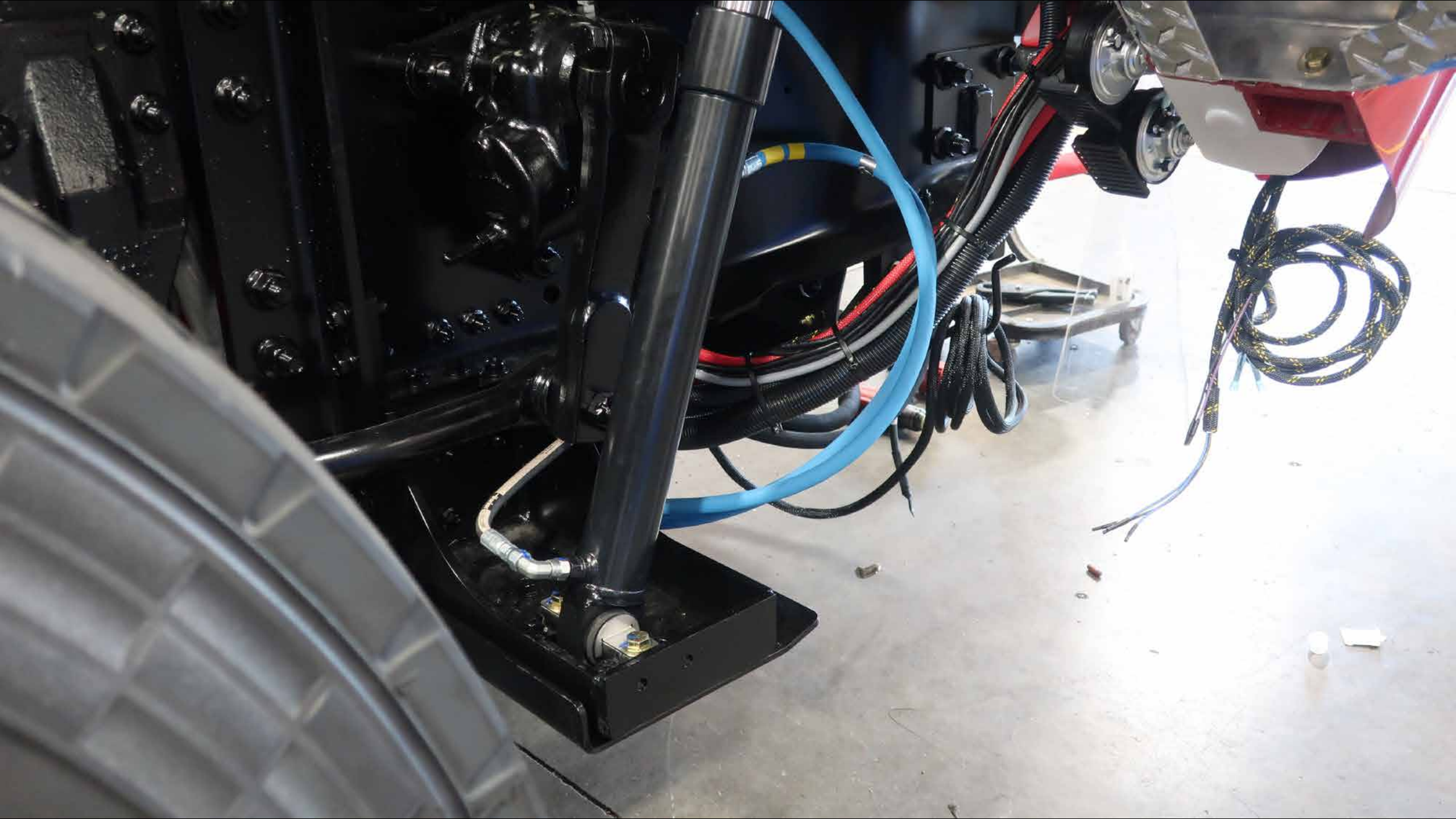


















Floor Pan (SS)





39036L



38871101

38871101



HUGHES FIRE EQUIPMENT