

Photo Album for Pierce Job 38871-01
Sedona Fire District, AZ
Custom Enforcer PUC Pumper

Wk 9 Production ending August 2, 2024

- The pumper is completing pump testing this week at the 41 plant.



Emergency light bar

Emergency light

Emergency light

Emergency light

Pierce

Emergency light

Emergency light

Emergency light

Emergency light

Speaker

Speaker

Control panel

Control panel

Speaker

Yellow dolly







WHELEN
EQUIPMENT COMPANY INC.





NOTICE
OF THE
FEDERAL IMPACT AND
SAFETY LABELING

WARNING
DANGER
DO NOT ENTER



SAFETY INSTRUCTIONS

	Always wear your seat belt.
	Do not drink alcohol while operating the vehicle.
	Do not use drugs while operating the vehicle.
	Do not use a cell phone while operating the vehicle.
	Do not text while operating the vehicle.
	Do not eat while operating the vehicle.
	Do not sleep while operating the vehicle.
	Do not smoke while operating the vehicle.
	Do not drink while operating the vehicle.
	Do not talk while operating the vehicle.
	Do not laugh while operating the vehicle.
	Do not play while operating the vehicle.
	Do not read while operating the vehicle.
	Do not write while operating the vehicle.
	Do not draw while operating the vehicle.
	Do not paint while operating the vehicle.
	Do not clean while operating the vehicle.
	Do not perform maintenance while operating the vehicle.
	Do not perform repairs while operating the vehicle.
	Do not drive while operating the vehicle.
	Do not park while operating the vehicle.
	Do not exit the vehicle while operating the vehicle.
	Do not re-enter the vehicle while operating the vehicle.
	Do not touch anything while operating the vehicle.
	Do not move anything while operating the vehicle.
	Do not change anything while operating the vehicle.
	Do not adjust anything while operating the vehicle.
	Do not turn anything while operating the vehicle.
	Do not twist anything while operating the vehicle.
	Do not bend anything while operating the vehicle.
	Do not stretch anything while operating the vehicle.
	Do not pull anything while operating the vehicle.
	Do not push anything while operating the vehicle.
	Do not lift anything while operating the vehicle.
	Do not carry anything while operating the vehicle.
	Do not hold anything while operating the vehicle.
	Do not support anything while operating the vehicle.
	Do not lean anything while operating the vehicle.
	Do not rest anything while operating the vehicle.
	Do not sit anything while operating the vehicle.
	Do not stand anything while operating the vehicle.
	Do not kneel anything while operating the vehicle.
	Do not crouch anything while operating the vehicle.
	Do not crawl anything while operating the vehicle.
	Do not climb anything while operating the vehicle.
	Do not jump anything while operating the vehicle.
	Do not fall anything while operating the vehicle.
	Do not trip anything while operating the vehicle.
	Do not slip anything while operating the vehicle.
	Do not fall anything while operating the vehicle.
	Do not trip anything while operating the vehicle.
	Do not slip anything while operating the vehicle.

SAFETY INSTRUCTIONS

SAFETY INSTRUCTIONS

AUTO CHARGE

38



PARK

RACK DOWN



92°F 9 HOURS

BATTERY ON

ULTRA LOW SULFUR DIESEL FUEL ONLY



★★★ MADE WITH PRIDE IN ★★★★★★
AMERICA
 ★★★★★★ BY PEOPLE WHO CARE ★★★

E-M

OFF

PANEL

HI IDLE

OK-HI IDLE



WHILEN®

OH OFF AUX

FLASH

SIREN HORN

AIRHORN/ELECT HORN

ELECT/MECH SIREN

SIREN BRAKE

CAB LOCKS DOWN NOT ENGAGED

P3 DOOR

DO NOT REMOVE

ENG BRK ON/OFF

ENG BRK HI/MED/LO

MIRROR HEAT

LOAD MANAGER

TIRE CHAINS ACTIVATED

CAUTION

MODE

R

N

D

↑

↓

Pierce

AUTO

68

CAUTION



ON ← → FLASH

OFF

AUX

1 2 3

WHELEN®

SIX large red rectangular switches arranged horizontally.

SIREN HORN AIRHORN/ELECT HORN ELECT/MECH SIREN SIREN BRAKE CAB LOCKS DOWNS NOT ENGAGED P3 DOOR

VOLTS

FUEL

FRONT AIR

REAR AIR

LOW SULFUR DIESEL FUEL ONLY





ENG BRK
ON/OFF



ENG BRK
HI/MED/LO



MIRROR
HEAT



LOAD
MANAGER



TIRE
CHAINS
ACTIVATED



CHAINS

DO NOT REMOVE
(REMOVE AT DEALER DESTINATION)
Pierce Part# NEW





Pierce

AUTO

60



PK RADIO



EMERGENCY MASTER ROOF LIGHT FRONT WARNING SIDE WARNING LOWER REAR WARNING UPPER REAR WARNING

Panel with three toggle switches and indicator lights.

Panel with five indicator lights and a row of five small buttons.

Panel with a digital display showing '20' and a vertical row of five red indicator lights.



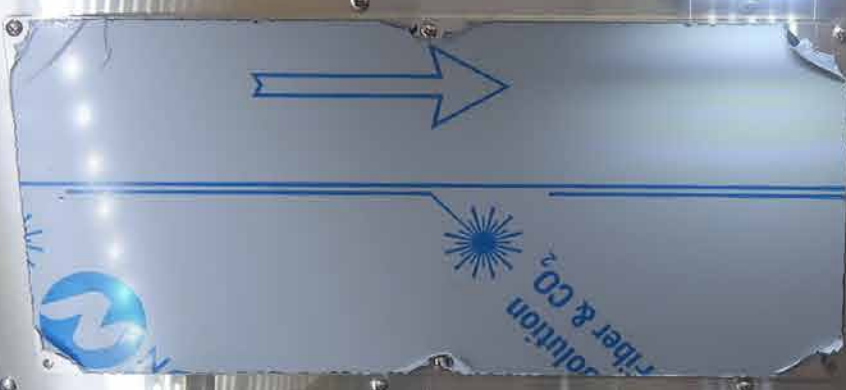












FRONT DISCHARGE
WATER → FOAM
LOCK
CLOSED OPEN

NO. 1 CROSSSLAY
WATER → FOAM
LOCK
CLOSED OPEN

NO. 2 CROSSSLAY
WATER → FOAM
LOCK
CLOSED OPEN

2 1/2" CROSSSLAY
WATER → FOAM
LOCK
CLOSED OPEN

DRIVER REAR DISCHARGE
WATER → FOAM
LOCK
CLOSED OPEN

PRIMER FIRE PUMP
PUSH TO PRIME
PRIMING INSTRUCTIONS

2070
248 SETTING
VE TO POWER
WATER TO PUMP
PRESSURE
LOCK
PRESS
STOP





Foam Tag →



Net

WARNING
READ MANUAL
BEFORE USE

PRIMER DRAIN



WARNING

Only trained personnel should operate this equipment. Personnel connecting supply or discharge hoses must be trained to recognize and respond to water hydraulics hazards and component limitations.

Do not operate or service until you have read, understood, and been trained and qualified on the procedures found in the latest editions of NFPA standards (including 1911, 1451, 1500, IFSTA Handbooks); and the operation and service manuals supplied with this equipment. Replacement manuals are available from the manufacturer of this apparatus.

Operating or servicing without knowledge or training may lead to injury or death for you or others.



PULL TO OPEN
NO. 1 CROSSBLAY

PULL TO OPEN
NO. 2 CROSSBLAY

PULL TO OPEN
2 1/2" CROSSBLAY

PULL TO OPEN
DRIVER HEAD DISCHARGE

PULL TO OPEN
MANIFOLD DRAIN

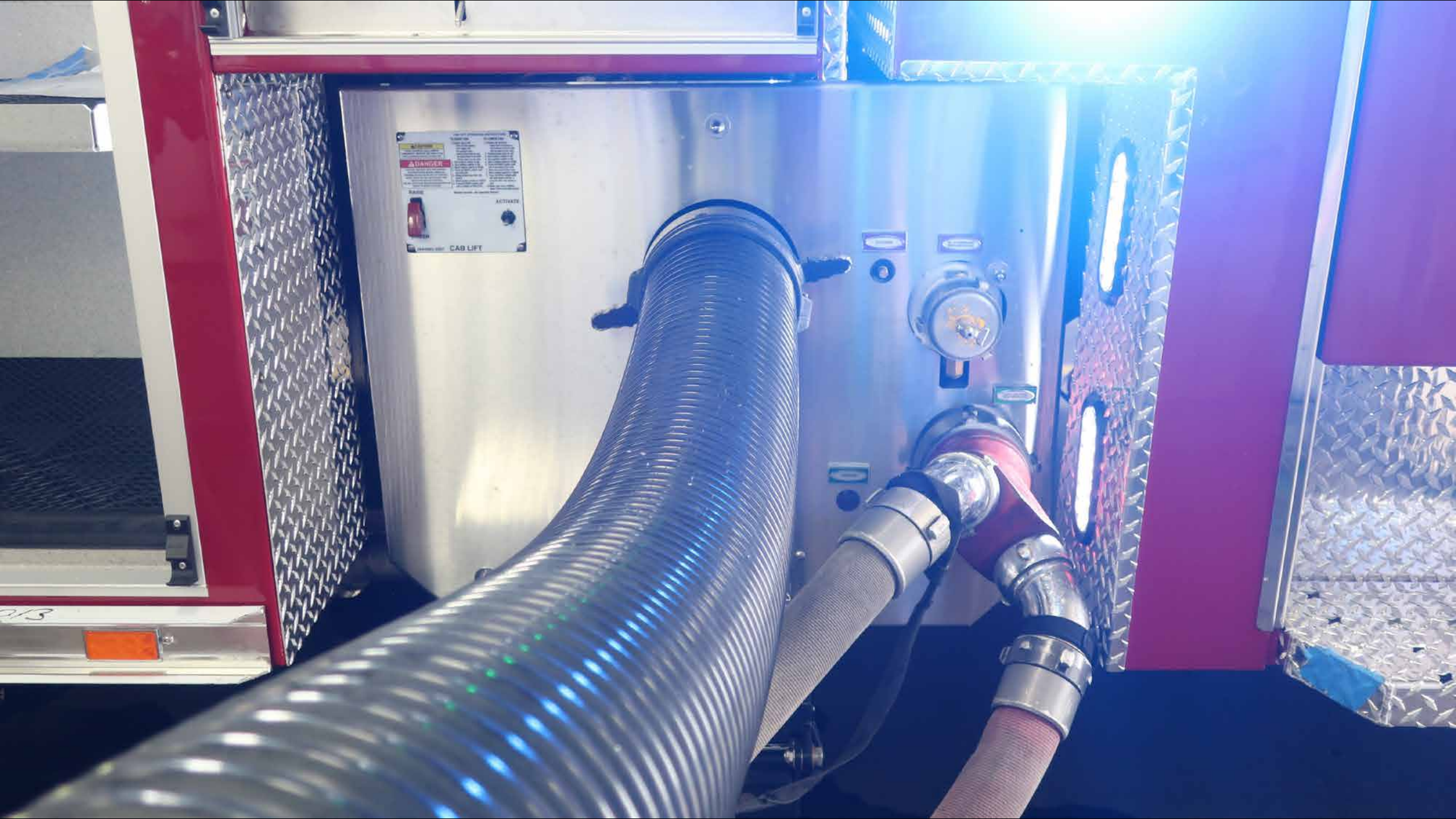












DANGER

CAUTION: Hydraulic system is under high pressure. Do not touch or adjust any components while the system is operating. Always use proper safety procedures.

EMERGENCY STOP

ACTIVATE

CAB LIFT

013



















38871





HUGHES FIRE EQUIPMENT