

Photo Album for Pierce Job 38871-02 Sedona Fire District, AZ Custom Enforcer PUC Pumper

Wk 4 Production ending July 5, 2024

- The cab has completed the paint process and has begun assembly at the Neenah plant.
- The chassis continues assembly at the Neenah plant.
- The body continues weld operations at the IPP plant.



38871-2

38871-2

313





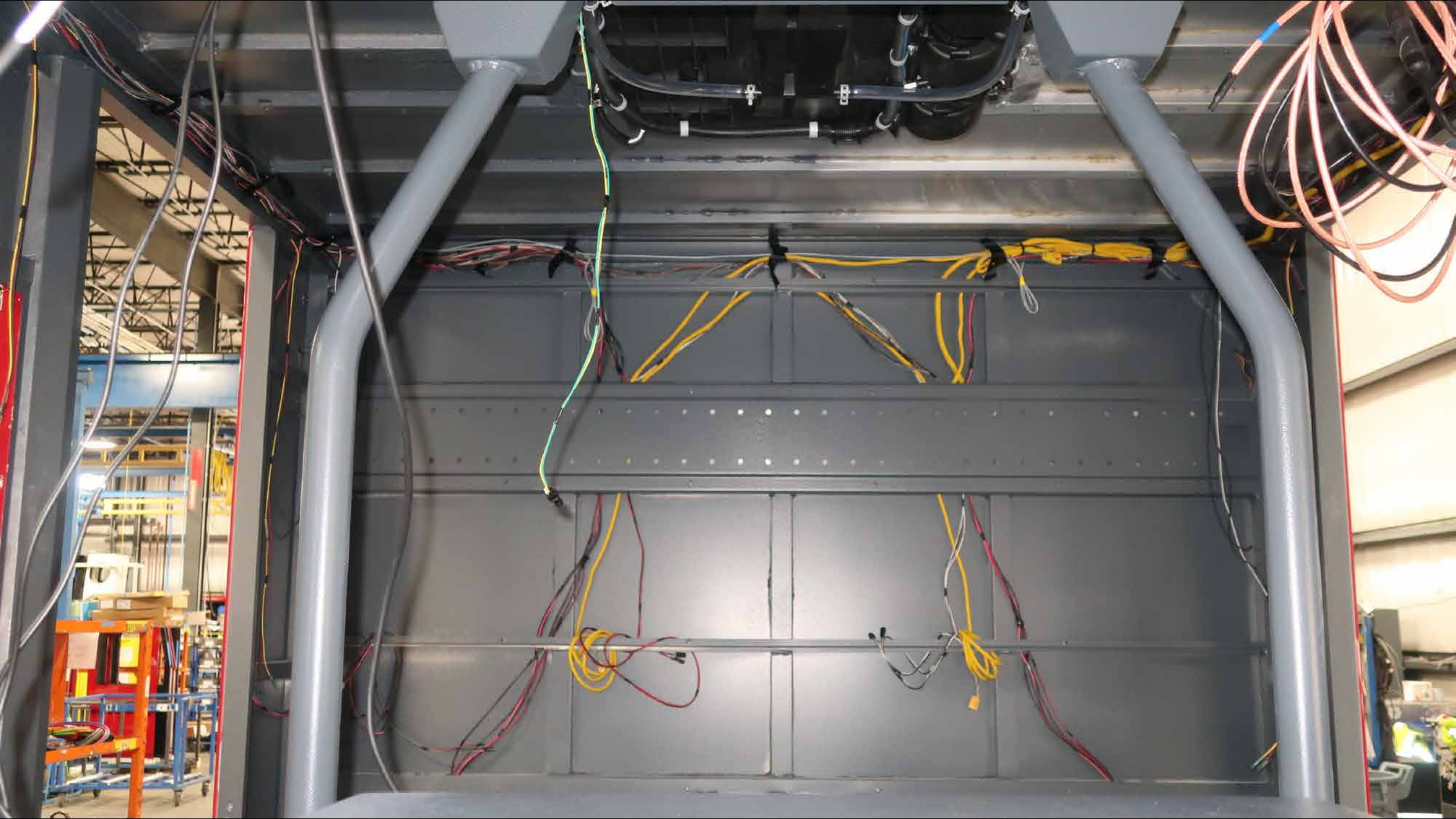
NOTICE

Quality First!
We're committed to training with a
DIGITAL VIDEO SECURITY SYSTEM

VISION
BY HIKVISION

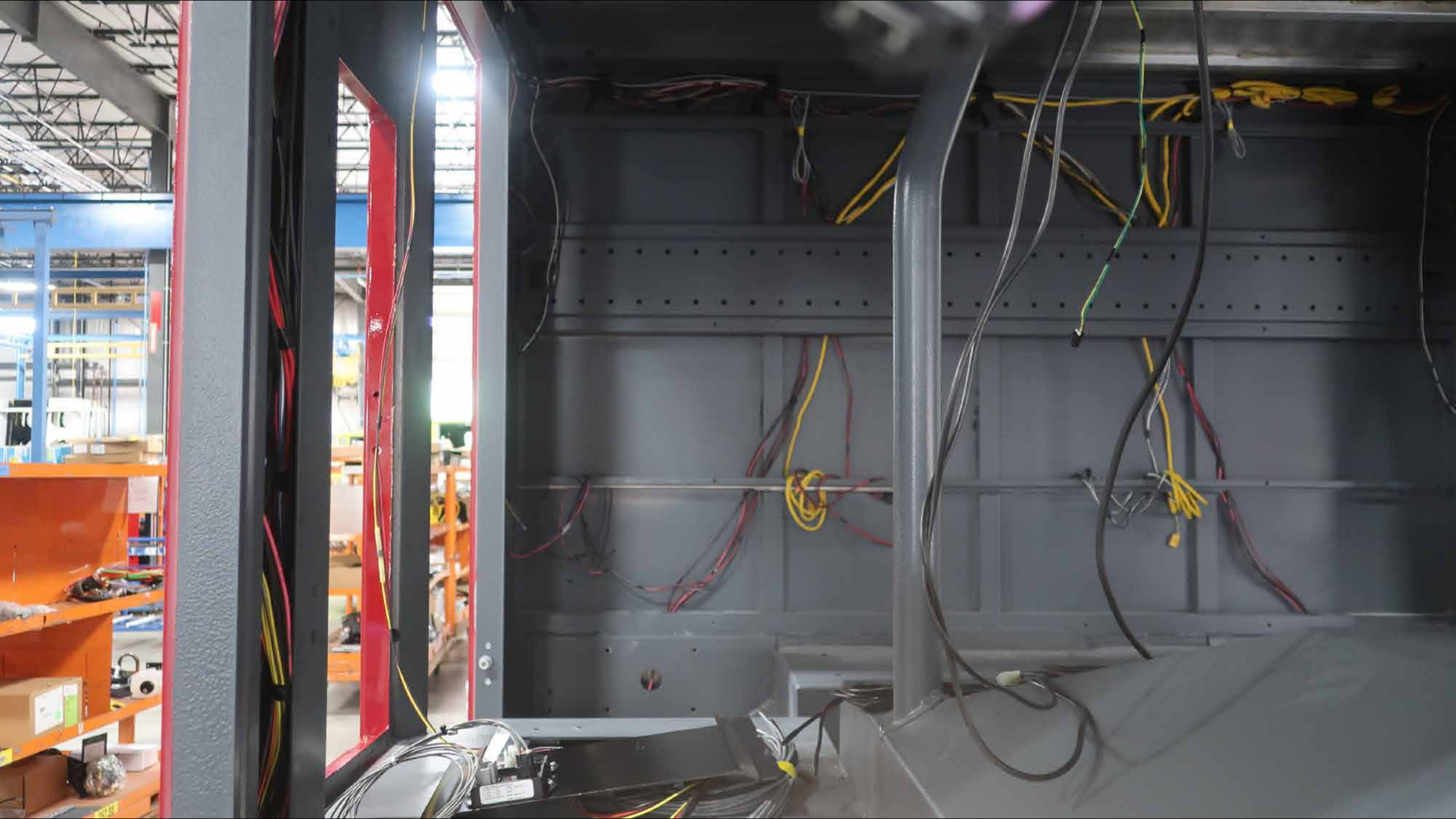


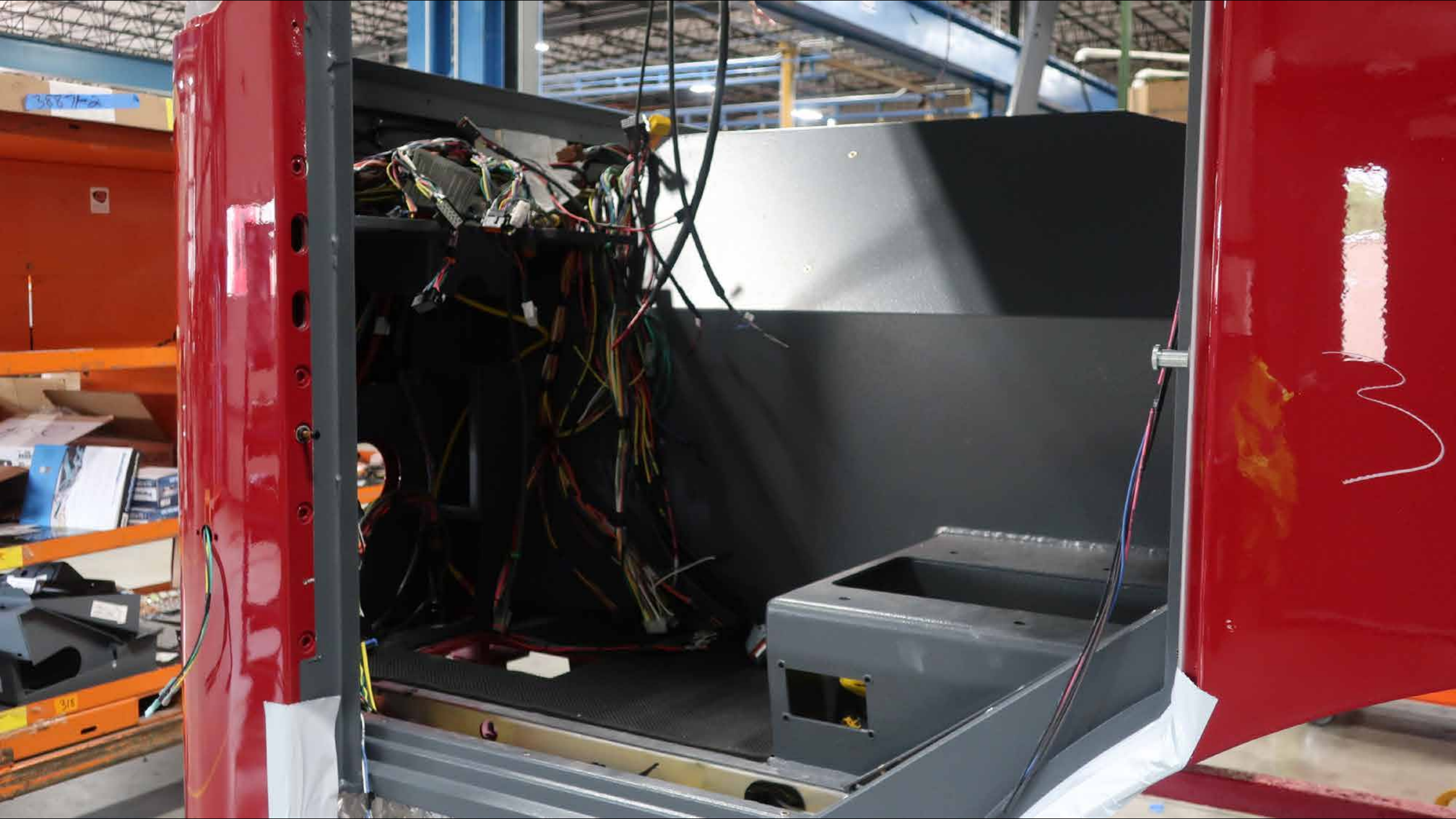
EXIT









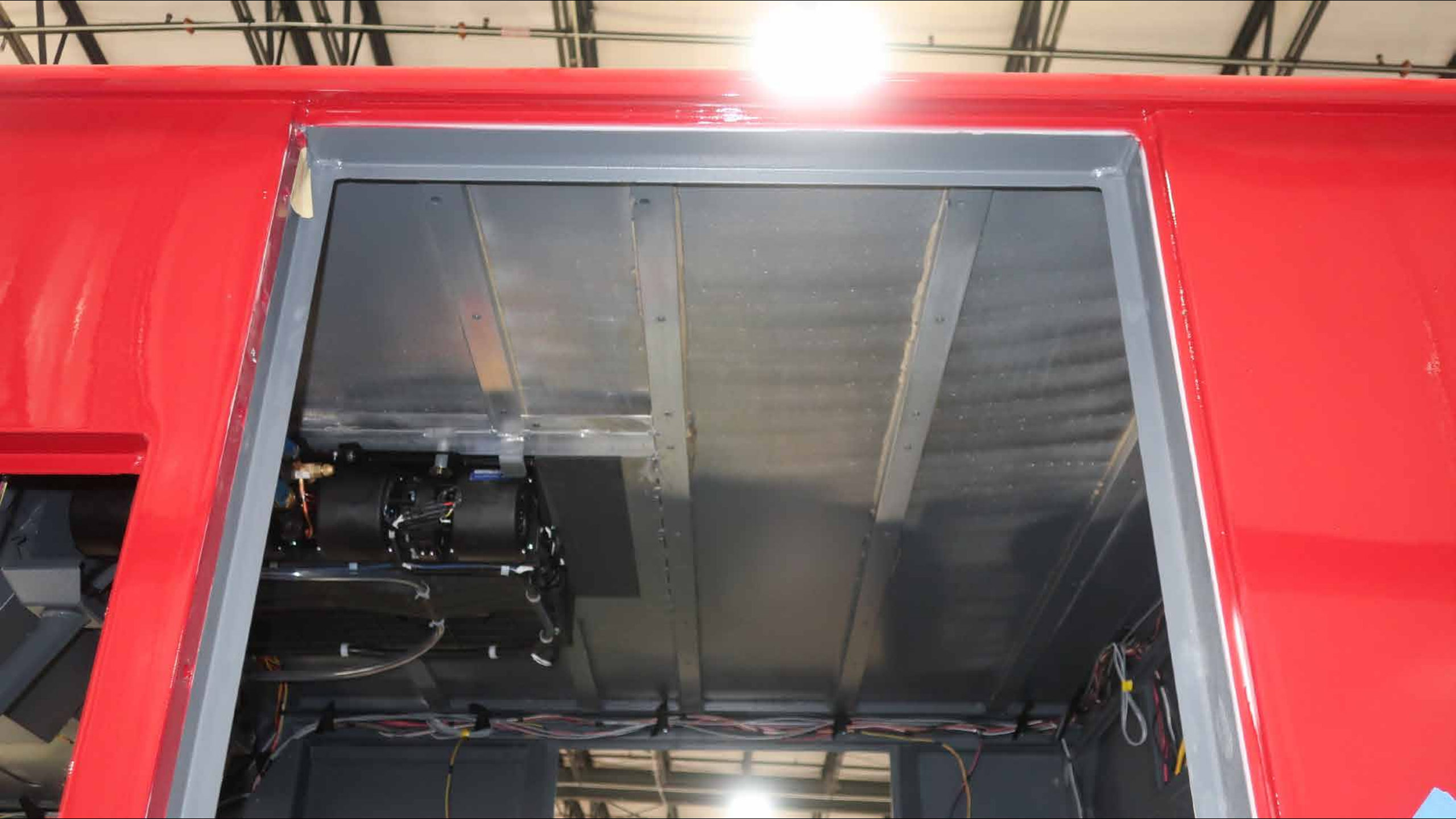






2007-2

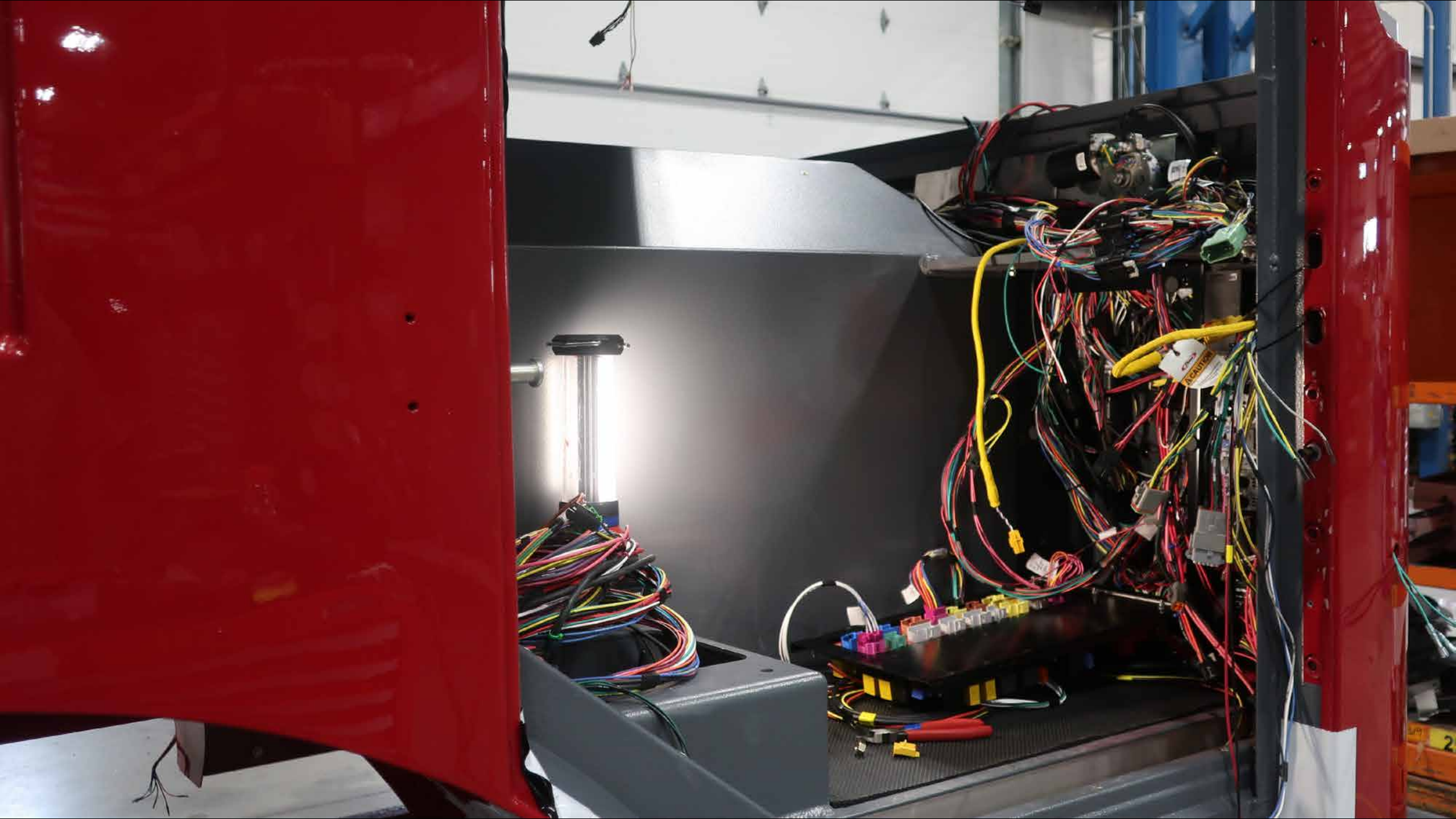
[Paper with blue tape]















NOTICE

QualTronics
THE PEOPLE & EQUIPMENT WITH A
DIGITAL VIDEO SECURITY SYSTEM

VISION
MODEL

EXIT



















① Filter - 100 mesh
Part - 4
② Feq board - 100 mesh part

Part - 20

Input - 40 mm field
+ 20 mm part
+ 10 mm
+ 10 mm

Part - 10

Part - 10









HUGHES FIRE EQUIPMENT